

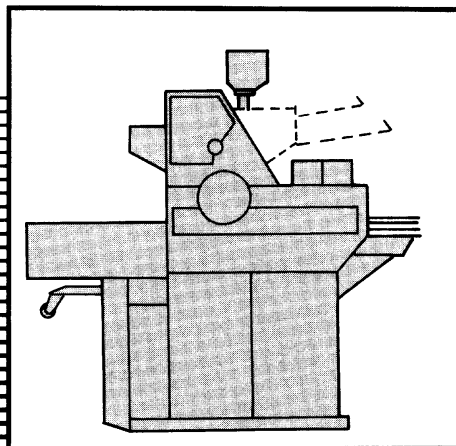
HAMADA

611 ECD

611 EXL

612 ECD

612 EXL



PARTS CATALOG

(注意)

このパーツカタログは、611/612・ECD/EXL専用部品を必要とする部分のフィギュアコード番号の頁のみを掲載してあります。従って、611/612・CD/XLのパーツカタログと合わせて御利用下さい。611/612・CD/XLのパーツカタログのフィギュアコード番号の内、つぎの番号は611/612・ECD/EXL専用部品を必要とするフィギュアコード番号です。

(NOTE)

This parts catalog includes exclusive parts for 611/612-ECD/EXL, shown by Code Numbers (Figure No. + Index No.), and is to be used with parts catalog for 611/612-CD/XL.

Among the parts catalog for 611/612-CD/XL, items shown on the pages of the following Figure Nos. should be substituted to those exclusive for 611/612-ECD/EXL.

N2002

N2023

N2035

N2047

N2003

N2031

N2036

N2055

N2004

N2034

N2044





はじめに

弊社にこれまで多量のご注文をいただき、また、その量も新しいハマダシリーズ発表と共に益々増加の一途をたどっていることに強い誇りを持つと共に皆様に厚く有難くお礼申上げる次第でございます。

この小冊子は、ハマダシリーズご使用の皆様方がご愛用機を常時最高の状態に維持して行くために何らかの調整並びに修理をする際の便宜をはかれればと思つて準備したものでございます。“ハマダシリーズ”はこれまでに販売されています小型オフセット印刷機の中で最も斬新にしてコンパクトなもので、機構的にも、性能的にもまた、その経済性においてもご使用の皆様方にきつとご満足戴くことができると思ひます。

多年に亘つて高い能率と経済性を維持して行く為には、ご愛用各位におかれましての適切な注意、点検と品質の高い部品との交換を計ることが不可欠なことでございます。

弊社には常時、厳選された部品が豊富にストックしてありますので、“ハマダシリーズ”ご修理の際は、純正部品を取り寄せてご使用下さるようお勧めいたします。

皆様に一段と秀れた改良機を紹介するため、我々は絶えず調査活動を行つておりますし、これまでも強力な活動を続けて参つております。

弊社“ハマダシリーズ”を尚一層ご利用下さいませよう伏してお願い申し上げます。

パーツカタログの 使用方法について

1. このパーツカタログは、必要な部品をイラスト図面と照合するだけで確認できるようになっております。

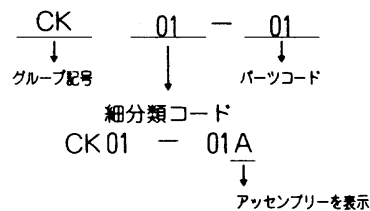
ご注文の際には、ご使用の機械名と機械番号、パーツカタログの左上にありますフィギュアコード番号および必要部品のインデックスNoと必要数量を連絡するだけで注文ができます。

但し部品の中には構造上、精度上の関係から工場出荷時より組付けた状態（アッセンパーツ）で出荷せざるを得ない部品がありますので予めご了承願ひます。

2. **611・612**シリーズの部品番号には、**611・612**シリーズ専用部品と附属部品の2種類に大別されております。

611・612シリーズ専用部品の番号構成は次の通りです。

例 CK 01 - 01



3. ハマダシリーズに使用されております附属部品（ボルト、ナット、ワッシャー等）は個々部品の寸法の違いにより数多い点数となります。

従ってこれらの部品は、ハマダシリーズ専用部品とは区別し、弊社の全製品（高速度凸版輪転機、オフセット輪転機等）に使用されている附属品と規格を整理統一、特別な番号を付けてあります。

番号の数字によってその部品の規格が判明するようになっており、かつまた、生産の合理化を目標としたものです。

例 101 - 366

101 366
↓ ↓
六角ボルトの標示 6mm径×16mm長
従って101-366の部品は六角ボルトで、径が6mm
長さが16mmであることが判明する訳です。

これらの附属部品の番号、仕様の一覧表は4Pを参照してご利用下さい。

4. このパーツカタログは“611・612シリーズ”を給紙側より排紙側までの機構を6グループに区別構成されております。

この6グループの内には、611・612シリーズ専用部品と他にハマダシリーズと互換の利く部品（H、M、I、R、B、A、X、KC、PC、MC、HC）から構成してあります。

CKグループ……給紙部・カバー部

CPグループ……インキ部・給湿部

CMグループ……印刷部

CHグループ……排紙部

Eグループ……電気部

4808グループ……給排版部(611XLA,612XLA専用)

5. このパーツカタログは、精密な立体組立図により構成されておりますから、御社での簡単な修理作業及び“**611・612**シリーズ”のメカニズムを理解する上に於て本書は十分にお役にたつことと存じます。

6. このパーツカタログは、予告なく変更する場合があります。

How to use Parts Catalog:

1. Find the parts you need in the illustrations and get their code numbers and descriptions in this parts catalog. Your order must show: ① index numbers, ② code numbers, and ③ quantities required.

For structural accuracy, we supply certain parts already assembled into larger unit components instead of supplying basic members individually.

2. Some of the parts are for use in 611/612 Series only and some are not. Parts of 611/612 Series are shown in the catalog as follows.

(Example)

CK01-01 CK = Group symbol
 01 = Sub-division
 01 = Parts code

CK01-01A

A = Assembly

3. The parts which are not exclusive to HAMADA Series but used in our all other presses (high speed rotary letterpresses, web offset presses, etc.) are shown as follows.

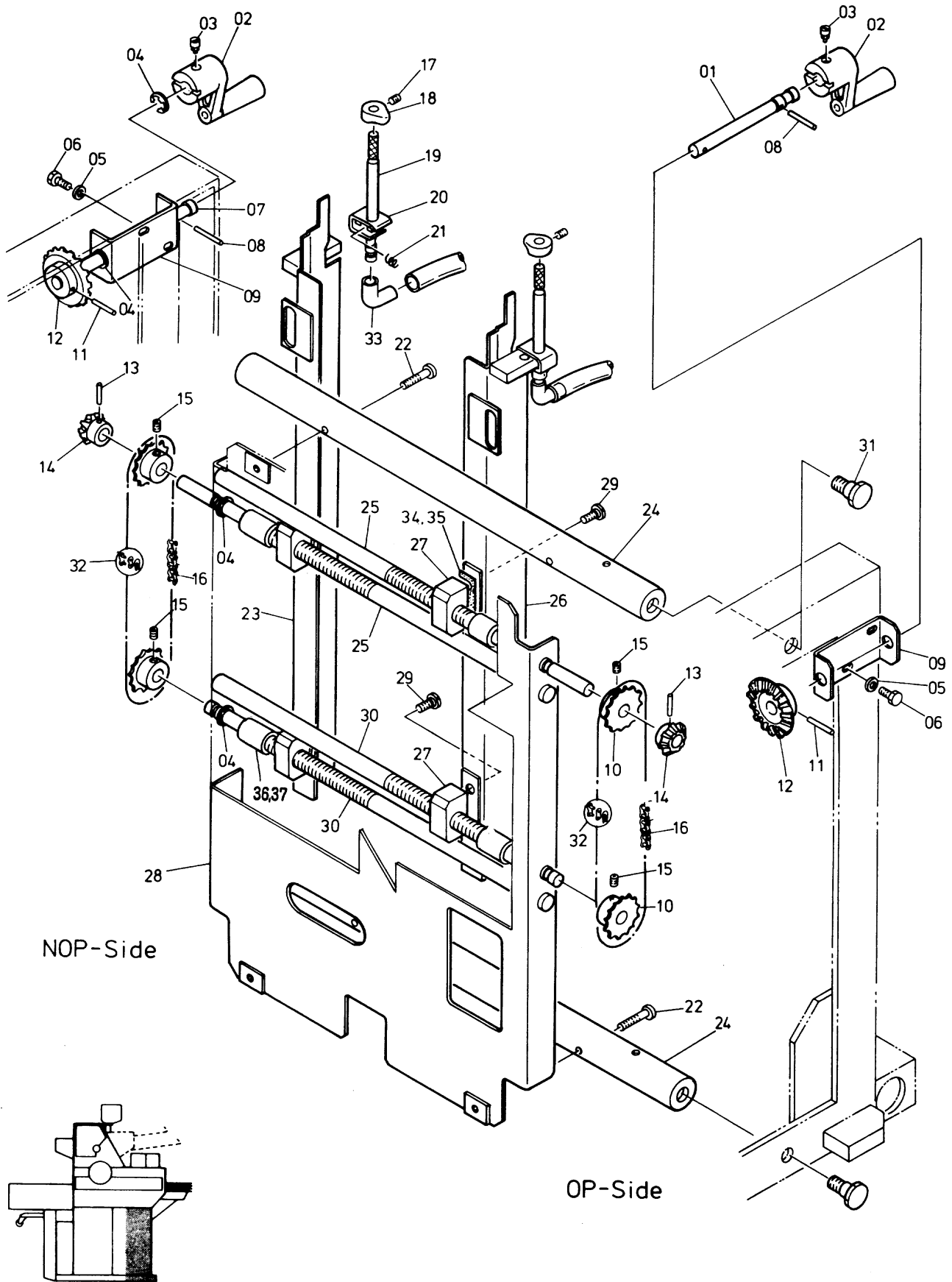
(Example)

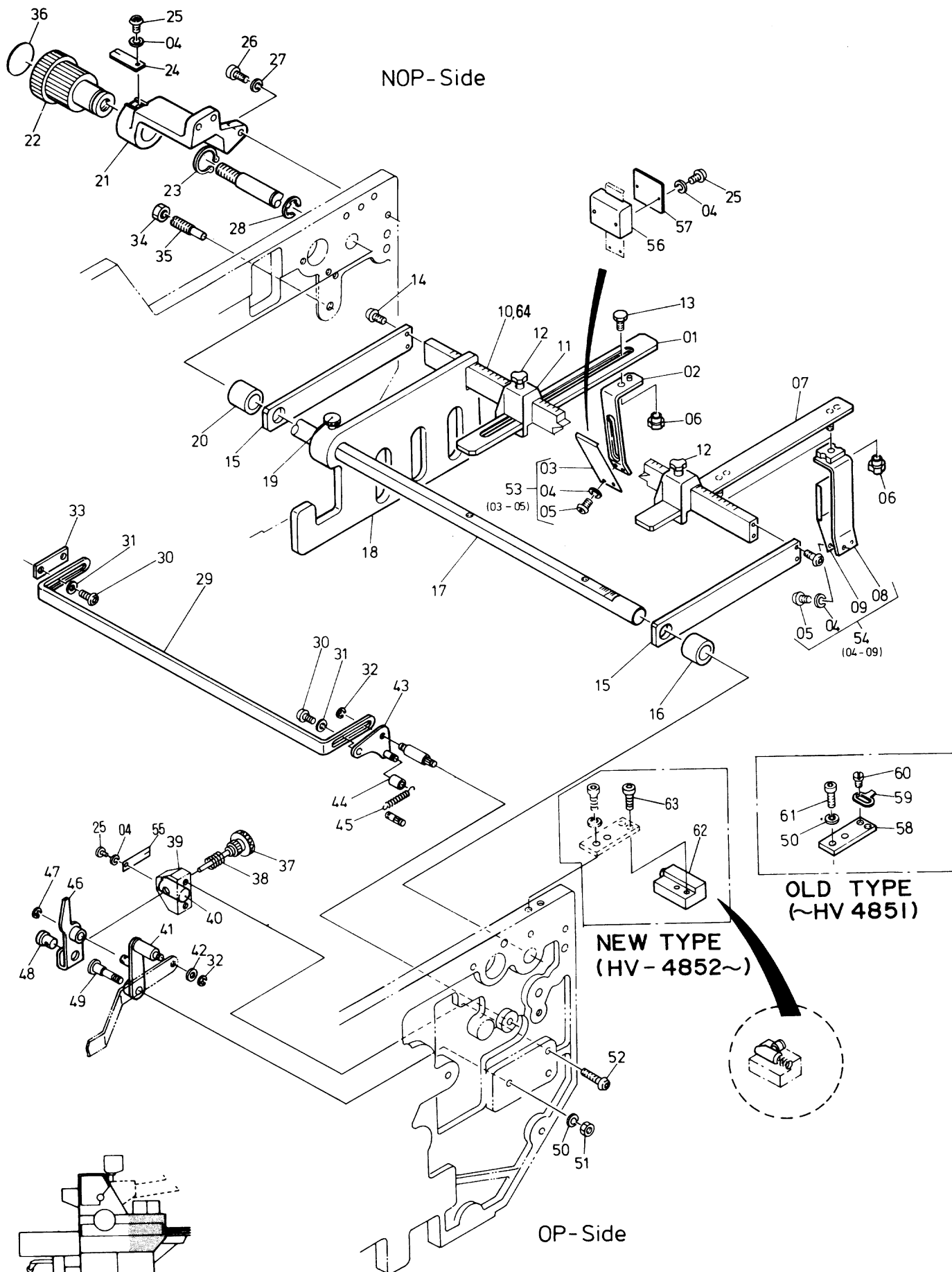
101-366 101 = Hexagon bolt
 366 = 6 mm dia. 16 mm long

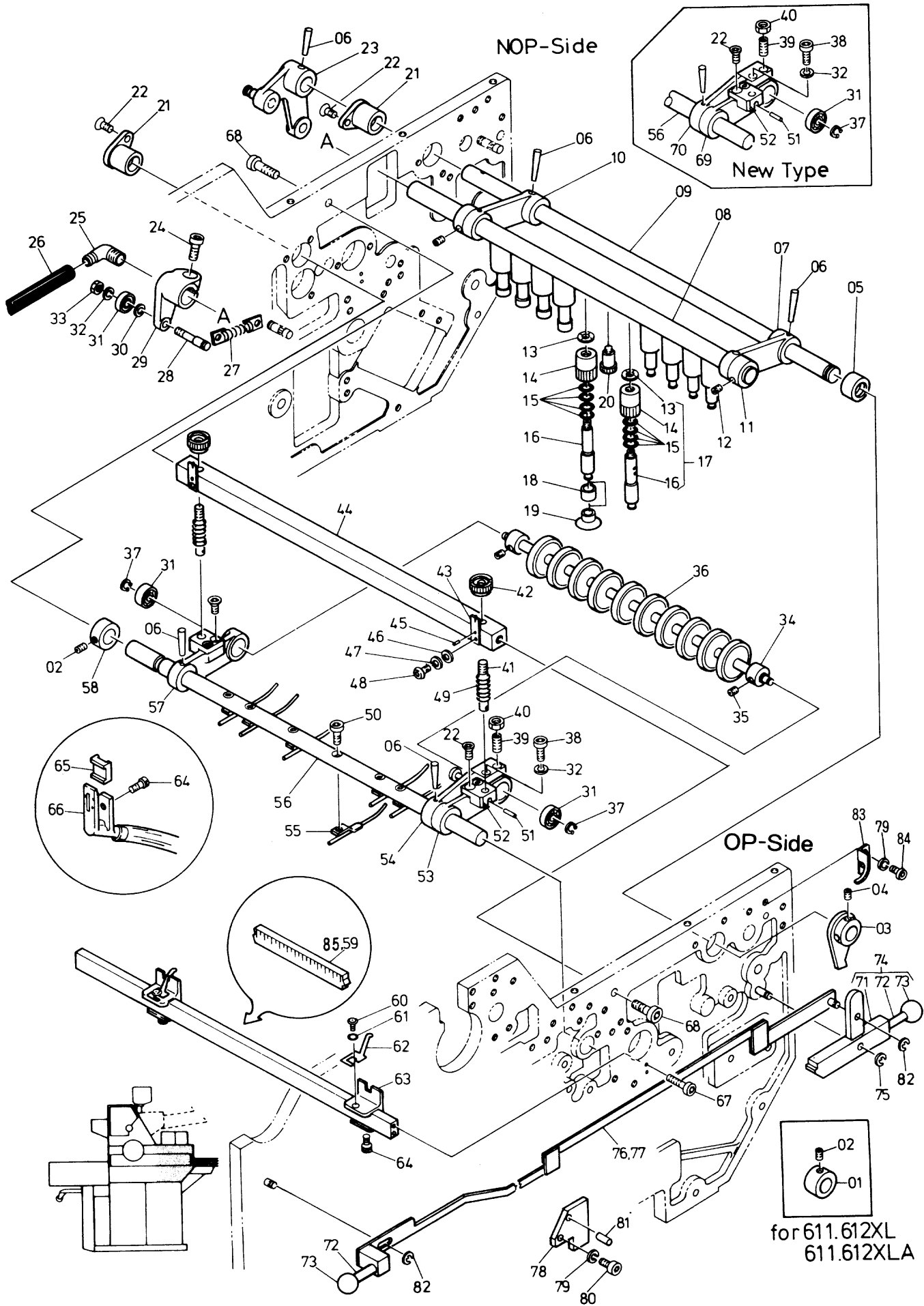
4. This parts catalog is designed for use of 611, 612 Series Presses, and has 6 groups. These 6 groups are composed of the parts exclusively used on 611/612 Series and the parts (H. M. I. R. B. A. X. KC. PC. MC. HC) interchangeably used on other Hamada Series Presses.

CK Group Feed Section, Covers
CP Group Ink Section, Dampening Section
CM Group Press Section
CH Group Delivery Section
E Group Electric Section
4808 Group Master Insert Eject Section
(for 611XLA. 612XLA)

5. The exploded views contained in the Catalog will help understanding of mechanisms and will be found useful in making simple repair.
6. Subject to change without prior notice.



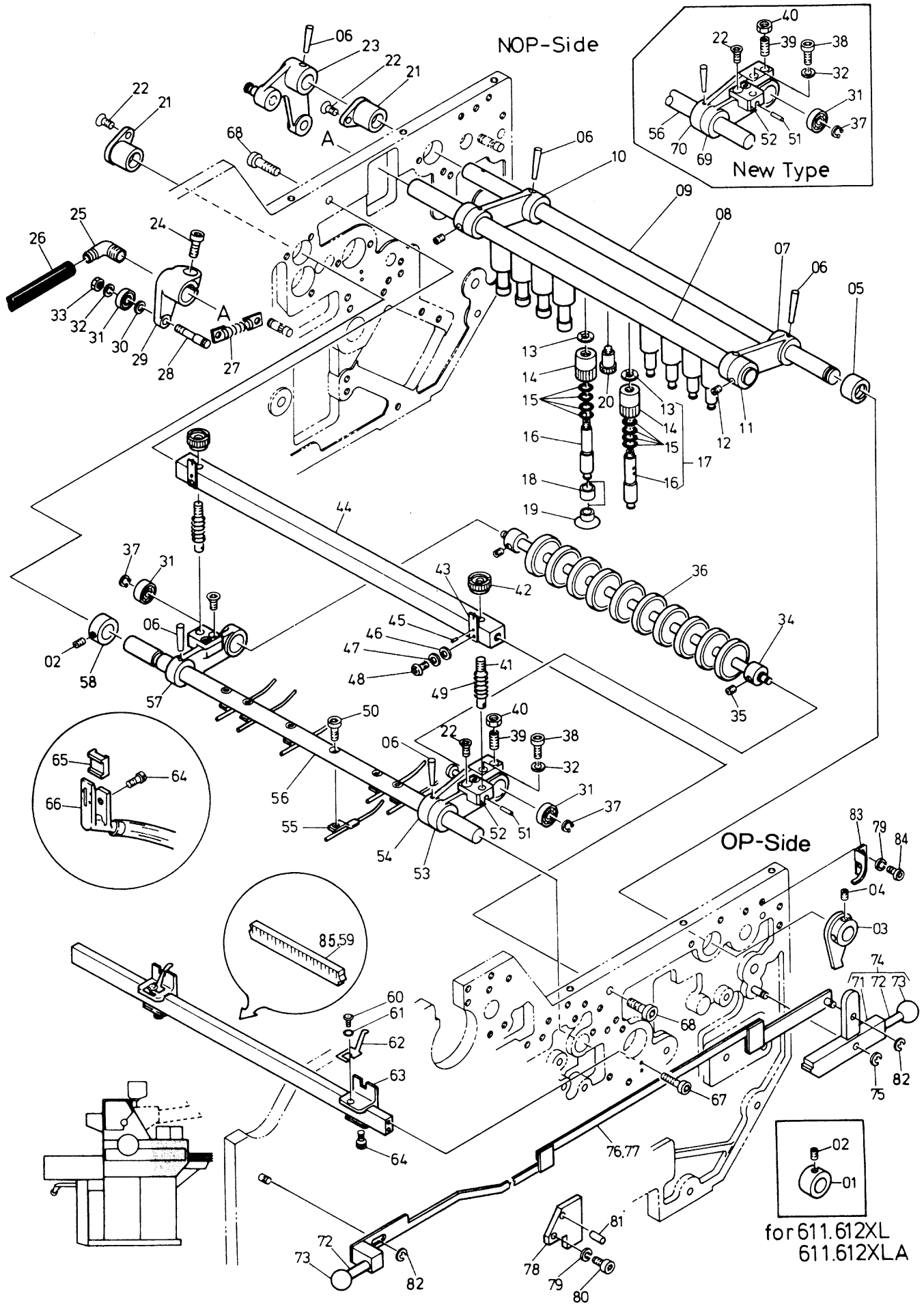


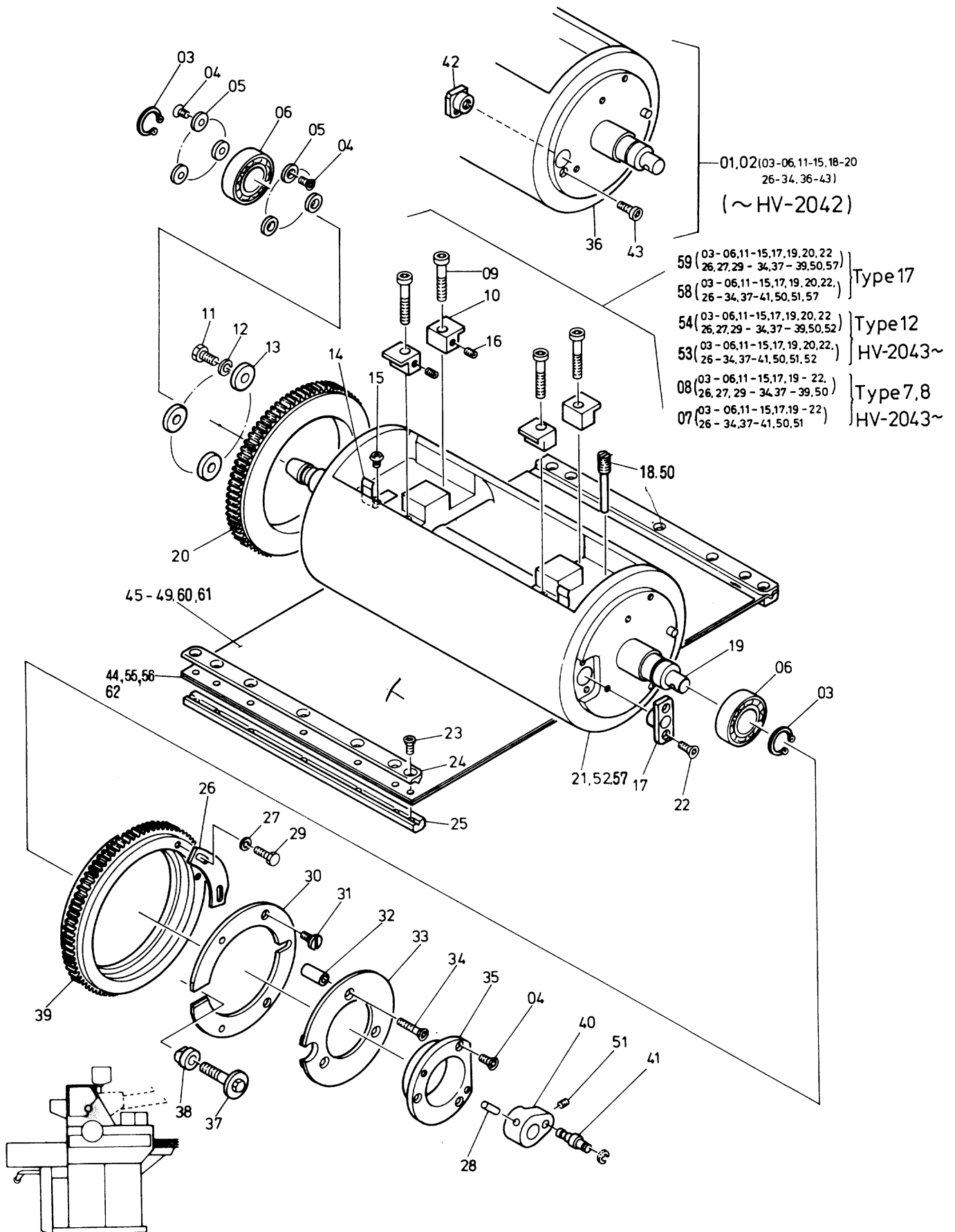


**Feed Section
Suction Foot and Pullout Roller**

N2004

INDEX No.	Parts No.	Description	Remarks	Units Per Assy				
				ECD	EXL	CD	XL	XLA
01	CK02-78	Collar		0	1	0	1	1
02	145-505	Set Screw		1	2	1	2	2
03	CK02-39A	Feed Control Lever		1	0	1	0	0
04	145-506	Set Screw		2	0	2	0	0
05	CK02-71	Bushing		1	1	1	1	1
06	182-169	Taper Pin		5	5	5	5	5
07	CK02-32	Pilot Shaft Bracket	OP-S	1	1	1	1	1
08	CK02-19A	Suction Pilot Shaft		1	1	1	1	1
09	CK02-29	Suction Pilot Shaft		1	1	1	1	1
10	CK02-67	Pilot Shaft Bracket	NOP-S	1	1	1	1	1
11	CK02-37	Collar		2	2	2	2	2
12	145-356	Set Screw		2	2	2	2	2
13	I27-42-3	Flat Washer		10	10	10	10	10
14	CK02-11	Suction ON-OFF Valve		10	10	10	10	10
15	CK02-46	O-Ring		40	40	40	40	40
16	CK02-12	Suction Foot		10	10	10	10	10
17	CK02-12A	Suction Foot Assy (12, 14, 15, 16)		10	10	10	10	10
18	CK02-61	Sucker for Thin Paper		10	10	10	10	10
19	CK02-77	Sucker for Heavy Stock		10	10	10	10	10
20	CK02-31	Plug		1	1	1	1	1
21	CK02-14	Bushing		2	2	2	2	2
22	122-110	Screw		6	6	6	6	6
23	CK08-18A	Suction Foot Drive Lever		1	1	1	1	1
24	117-468	Screw		1	1	1	1	1
25	CK02-24	Hose Joint		1	1	1	1	1
26	CK02-45	Hose		1	1	1	1	1
27	CM11-02	Spring		1	1	1	1	1
28	CK08-26	Pin		1	1	1	1	1
29	CK02-30	Suction Foot Operating Arm		1	1	1	1	1
30	I31-09-3	Spacer		1	1	1	1	1
31	250-126.6	Bearing		3	3	3	3	3
32	180-106	Lock Washer		2	2	2	2	2
33	170-106	Nut		1	1	1	1	1
34	CK02-79	Collar		2	2	2	2	2
35	145-508	Set Screw		2	2	2	2	2
36	CK02-20	Upper Pullout Roller		1	1	1	1	1
37	181-405	C-Ring		2	2	2	2	2
38	117-368	Screw		1	1	1	1	1
39	CK02-62	Set Screw		1	1	1	1	1
40	170-108	Nut		1	1	1	1	1
41	CK02-57	Pin		2	2	2	2	2
42	CK02-58	Knob		2	2	2	2	2
43	CK02-66	Flat Spring		2	2	2	2	2
44	CM01-07	Spreader		1	1	1	1	1
45	183-178	Roll Pin		2	2	2	2	2
46	184-104	Flat Washer		2	2	2	2	2
47	180-104	Lock Washer		2	2	2	2	2
48	125-656	Screw		2	2	2	2	2
49	CK02-64	Spring		2	2	2	2	2
50	117-515	Screw		6	6	6	6	6
51	183-182	Roll Pin		1	1	1	1	1
52	CK02-54	Bracket		2	2	2	2	2
53	CK02-72	Bracket for Pullout Roller	OP-S HV-2001 ~ HV-2519	0	0	1	1	0
54	CK02-73	Drive Lever	HV-2001 ~ HV-2519	0	0	1	1	0
55	CK02-59	Paper Guide		6	6	6	6	6
56	CK02-28	Upper Pullout Roller Pilot Shaft		1	1	1	1	1
57	CK02-55	Bracket for Pullout Roller	NOP-S	1	1	1	1	1
58	M05-37-3	Collar		1	1	1	1	1
59	CK05-02	Scaled Cross Bar		0	0	1	1	1
60	125-655	Screw		4	4	4	4	4
61	184-104	Flat Washer		4	4	4	4	4
62	H11-25-3	Sheet Separator		4	4	4	4	4
63	CK05-33	Sheet Separator Bracket		4	4	4	4	4
64	H11-34-3	Thumb Screw		4	4	4	4	4
65	H11-29-3	Bracket		2	2	2	2	2
66	H11-27-1A-3	Front Blower Nozzle		2	2	2	2	2
67	117-425	Screw		4	4	4	4	4
68	117-475	Screw		2	2	2	2	2
69	CK02-82	Bracket for Pullout Roller	OP-S HV-2520 ~	1	1	1	1	1
70	CK02-83	Drive Lever	HV-2525 ~	1	1	1	1	1



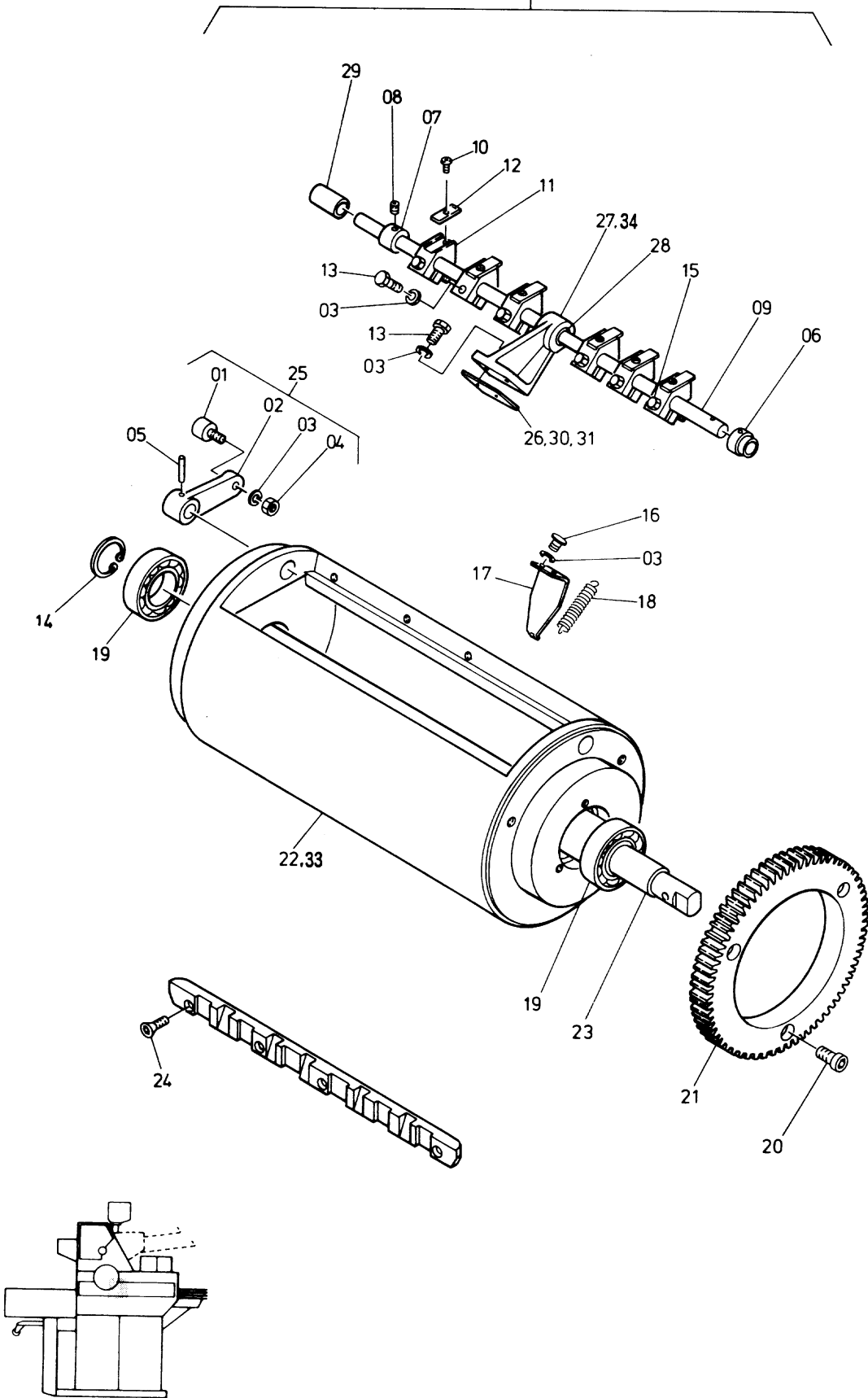


Blanket Cylinder

N2023

INDEX No.	Parts No.	Description	Remarks	Units Per Assy				
				ECD	EXL	CD	XL	XLA
01	CM03-01A	Blanket Cylinder Assy ~ HV-2042	Type-7, 8	0	0	0	1	0
02	CM03-01B	Blanket Cylinder Assy ~ HV-2042	Type-7, 8	0	0	1	0	0
03	181-025	C-Ring		2	2	2	2	2
04	122-112	Screw		9	9	9	9	9
05	MC03-05	Flat Washer		6	6	6	6	6
06	M22-02-3	Bearing		2	2	2	2	2
07	CM03-21A	Blanket Cylinder Assy HV-2043 ~	Type-7, 8	0	0	0	1	1
08	CM03-21B	Blanket Cylinder Assy HV-2043 ~	Type-7, 8	0	0	1	0	0
09	117-482	Screw		4	4	4	4	4
10	MC03-30	Tension Adjustment Block		4	4	4	4	4
11	101-466	Screw		3	3	3	3	3
12	180-108	Lock Washer		3	3	3	3	3
13	MC02-13	Flanged Washer		3	3	3	3	3
14	M15-10-3	Spring		2	2	2	2	2
15	125-760	Screw		2	2	2	2	2
16	145-356	Set Screw		4	4	4	4	4
17	CM03-22	Lock Nut		1	1	1	1	1
18	MC03-12	Pilot Screw		0	0	1	1	0
19	CM03-24	Blanket Cylinder Shaft		1	1	1	1	1
20	CM03-04	Blanket Cylinder Ring Gear	NOP-S	1	1	1	1	2
21	CM03-21	Blanket Cylinder	Type-7, 8	0	0	1	1	1
22	122-112	Screw		2	2	2	2	2
23	122-165	Screw		14	14	14	14	4
24	M03-18-6	Blanket Clamp Bar		2	2	2	2	2
25	MC03-31	Blanket Clamp Bar		2	2	2	2	2
26	CM03-18	Cam		1	1	1	1	1
27	184-106	Flat Washer		2	2	2	2	2
28	183-229	Roll Pin		0	1	0	1	1
29	101-366	Screw		2	2	2	2	2
30	CM03-06	Blanket Cylinder Ring Gear Disk		1	1	1	1	1
31	CM03-19	Bolt		2	2	2	2	2
32	CM03-17	Spacer		3	3	3	3	3
33	CM03-16	Plate		1	1	1	1	1
34	122-130	Screw		3	3	3	3	3
35	CM03-07	Blanket Cylinder Bearing Frange		1	1	1	1	1
36	CM03-01	Blanket Cylinder		1	1	1	1	0
37	CM03-10	Bolt		1	1	1	1	1
38	CM03-09	Stopper		1	1	1	1	1
39	CM03-03	Blanket Cylinder Ring Gear		1	1	1	1	1
40	CP02-29	Crank		0	1	0	1	1
41	CP02-27	Pin		0	1	0	1	1
42	CM03-13	Lock Nut		1	1	1	1	0
43	117-515	Screw		1	1	1	1	1
44	MC03-22	Blanket		0	0	1	1	1
45	MC03-53	Blanket Under Packing For 612CD/XL/XLA	Spec. 1 ~ 4	0	0	1	1	1
46	MC03-54	Blanket Under Packing For 611CD/XL/XLA	Spec. 1	0	0	1	1	1
47	MC03-55	Blanket Under Packing For 611CD/XL/XLA	Spec. 2	0	0	1	1	1
48	MC03-56	Blanket Under Packing For 611CD/XL/XLA	Spec. 3	0	0	1	1	1
49	MC03-57	Blanket Under Packing For 611CD/XL/XLA	Spec. 4	0	0	1	1	1
50	CM03-23	Pilot Screw		1	1	1	1	1
51	145-506	Set Screw		0	1	0	1	1
52	CM12-01	Blanket Cylinder	Type-12	0	0	1	1	1
53	CM12-01A	Blanket Cylinder Assy	Type-12	0	0	0	1	1
54	CM12-01B	Blanket Cylinder Assy	Type-12	0	0	1	0	0
55	4807-20001	Compressible Blanket (for 661/662CD, XL)	Type-7, 8, 12	0	0	1	1	0
56	MC03-51	Blanket	Option	0	0	1	1	1
57	CM23-01	Blanket Cylinder	Type-17	1	1	0	0	0
58	CM23-01A	Blanket Cylinder Assy	Type-17	0	1	0	0	0
59	CM23-01B	Blanket Cylinder Assy	Type-17	1	0	0	0	0
60	CM23-03	Blanket Under Packing For 611ECD/EXL	Spec. 6	1	1	0	0	0
61	CM23-04	Blanket Under Packing For 611ECD/EXL	Spec. 5	1	1	0	0	0
62	CM23-02	Blanket		1	1	0	0	0

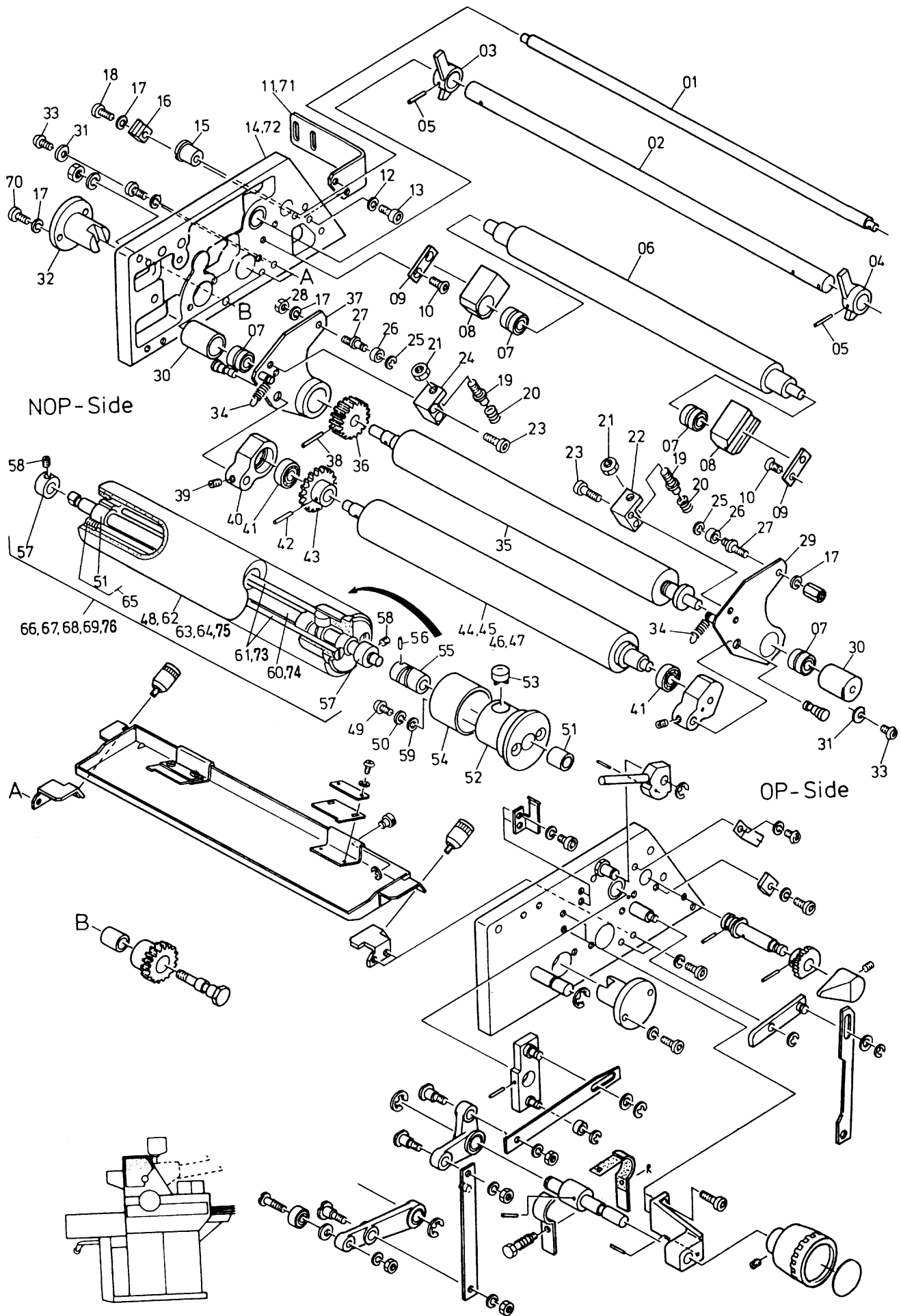
35 (03,06 - 21,23 - 31,34)
32 (03,06-31)

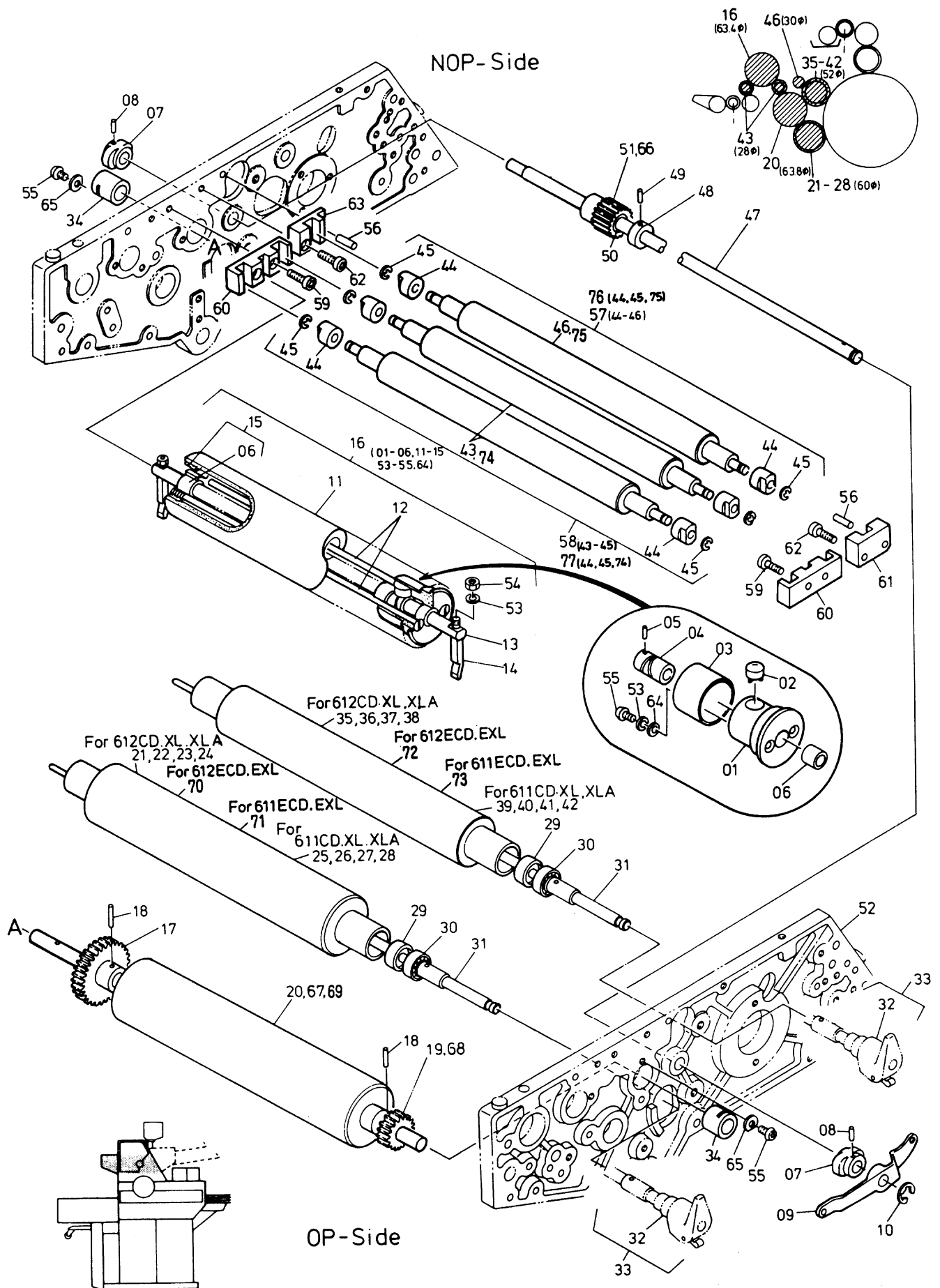


**Dampening Section
Side Frame and Roller (Intargrated System)**

N2031

INDEX No.	Parts No.	Description	Remarks	Units Per Assy				
				ECD	EXL	CD	XL	XLA
01	CP18-54	Eccentric Shaft		1	1	1	1	1
02	CP18-21	Metering Roller On-Off Shaft		1	1	1	1	1
03	CP18-33	Lever	NOP-S	1	1	1	1	1
04	CP18-32	Lever	OP-S	1	1	1	1	1
05	183-207	Roll Pin		2	2	2	2	2
06	CP18-23A	Squeeze Roller		1	1	1	1	1
07	CP18-81	Bearing		4	4	4	4	4
08	CP18-40	Squeeze Roller Bracket		2	2	2	2	2
09	CP18-41	Guide Plate		2	2	2	2	2
10	122-110	Screw		4	4	4	4	4
11	PC18-55	Bottle Bracket		1	1	1	1	0
12	180-105	Lock Washer	NOP-S	2	2	2	2	2
13	117-522	Screw		2	2	2	2	2
14	CP18-02A	Dampening Side Frame	NOP-S	1	1	1	1	0
15	CP18-43	Eccentric Bushing		1	1	1	1	1
16	CP18-52	Block		1	1	1	1	1
17	180-106	Lock Washer		4	4	4	4	4
18	117-365	Screw		2	2	2	2	2
19	CP18-13	Adjustment Screw		2	2	2	2	2
20	CP18-14	Spring		2	2	2	2	2
21	170-108	Nut		2	2	2	2	2
22	CP18-11	Block	OP-S	1	1	1	1	1
23	117-515	Screw		4	4	4	4	4
24	CP18-12	Block	NOP-S	1	1	1	1	1
25	181-404	E-Ring		2	2	2	2	2
26	R51-20-3	Guide Roller		2	2	2	2	2
27	CP18-31	Eccentric Pin		2	2	2	2	2
28	170-106	Nut		1	1	1	1	1
29	CP18-19A	Metering Roller Bracket	OP-S	1	1	1	1	1
30	CP18-06	Bushing		2	2	2	2	2
31	I23-18-3	Washer		2	2	2	2	2
32	CP18-57	Flange	NOP-S	1	1	1	1	1
33	125-708	Screw		2	2	2	2	2
34	CP18-15	Spring		2	2	2	2	2
35	CP18-03	Fountain Roller		1	1	1	1	1
36	CP18-10	Gear		1	1	1	1	1
37	CP18-20A	Metering Roller Bracket	NOP-S	1	1	1	1	1
38	183-188	Roll Pin		1	1	1	1	1
39	145-356	Set Screw		1	1	1	1	1
40	CP18-38	Ductor Roller Bracket	NOP-S	1	1	1	1	1
41	250-000.6	Bearing		2	2	2	2	2
42	183-186	Roll Pin		1	1	1	1	1
43	CP18-07	Gear		1	1	1	1	1
44	CP18-05	Metering Roller	Spec. 1	1	1	1	1	1
45	CP18-69	Metering Roller	Spec. 2	0	0	1	1	1
46	CP18-71	Metering Roller	Spec. 3	0	0	1	1	1
47	CP18-73	Metering Roller	Spec. 4	0	0	1	1	1
48	CP18-75	Oscillating Roller	Spec. 1	0	0	1	1	1
49	125-708	Screw		1	1	1	1	1
50	180-105	Lock Washer		1	1	1	1	1
51	H08-16-3	Bushing	Included in 52, 65	2	2	2	2	2
52	CP03-43A	Oscillator Mechanism Hub		1	1	1	1	1
53	G26-86-3	Oscillator Worm Cam Follower (Dog)		1	1	1	1	1
54	CP03-44	Retaining Hub		1	1	1	1	1
55	I03-57-3	Oscillator Worm Cam		1	1	1	1	1
56	I03-58-3	Roll Pin		1	1	1	1	1
57	X03-08-01-3	Collar		2	2	2	2	2
58	145-406.01	Screw		2	2	2	2	2
59	184-105	Flat Washer		1	1	1	1	1
60	CP18-76	Oscillating Roller Shaft		0	0	1	1	1
61	CP03-47	Oscillating Roller Tie Rod		0	0	2	2	2
62	CP18-77	Oscillating Roller	Spec. 2	0	0	1	1	1
63	CP18-78	Oscillating Roller	Spec. 3	0	0	1	1	1
64	CP18-79	Oscillating Roller	Spec. 4	0	0	1	1	1
65	I03-52-1A-3	Oscillator Roller Hub		1	1	1	1	1
66	CP18-75A	Oscillating Roller Assy (48 - 65)	Spec. 1	0	0	1	1	1
67	CP18-77A	Oscillating Roller Assy (48 - 65)	Spec. 2	0	0	1	1	1
68	CP18-78A	Oscillating Roller Assy (48 - 65)	Spec. 3	0	0	1	1	1
69	CP18-79A	Oscillating Roller Assy (48 - 65)	Spec. 4	0	0	1	1	1
70	117-368	Screw		2	2	2	2	2



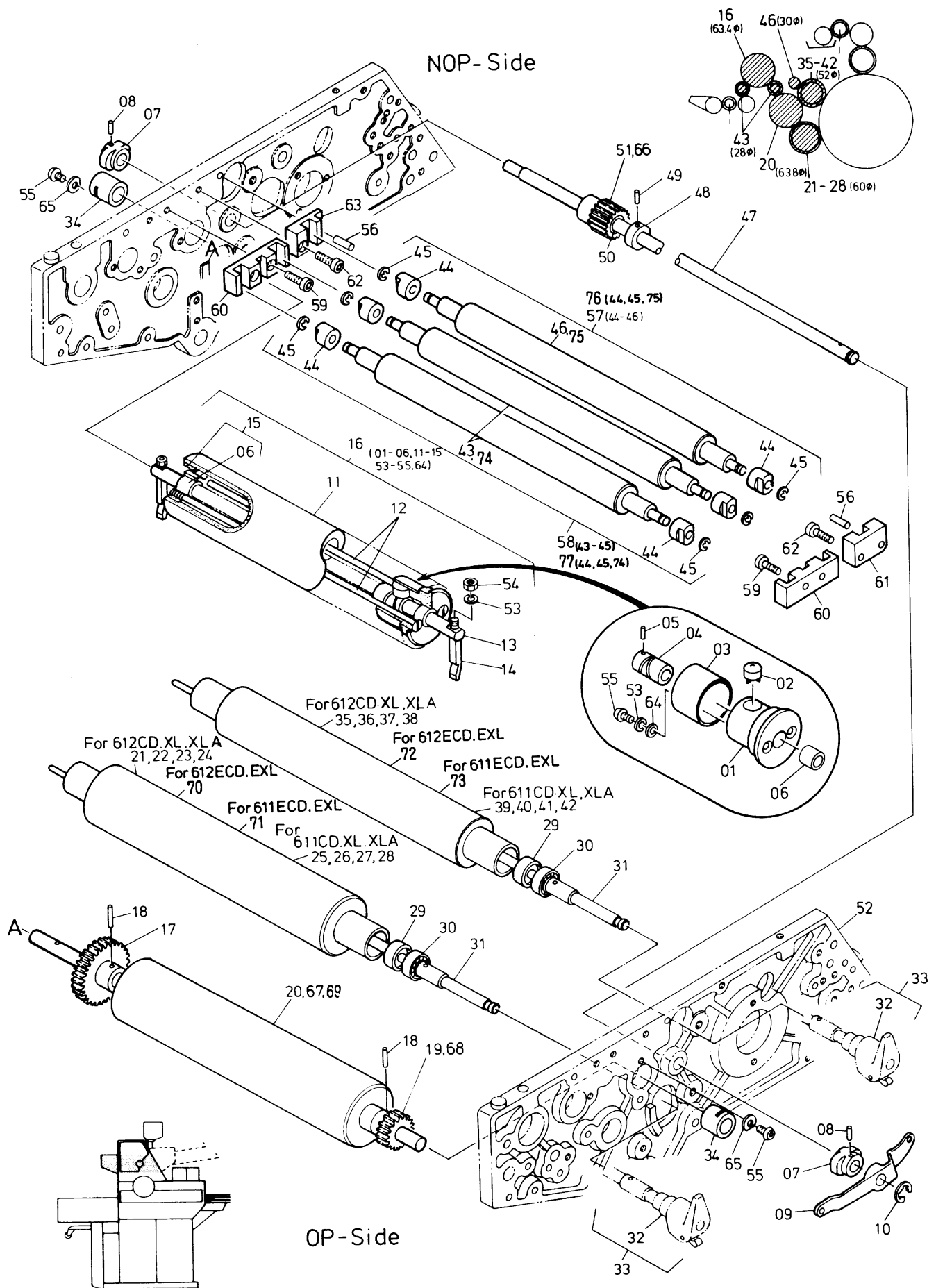


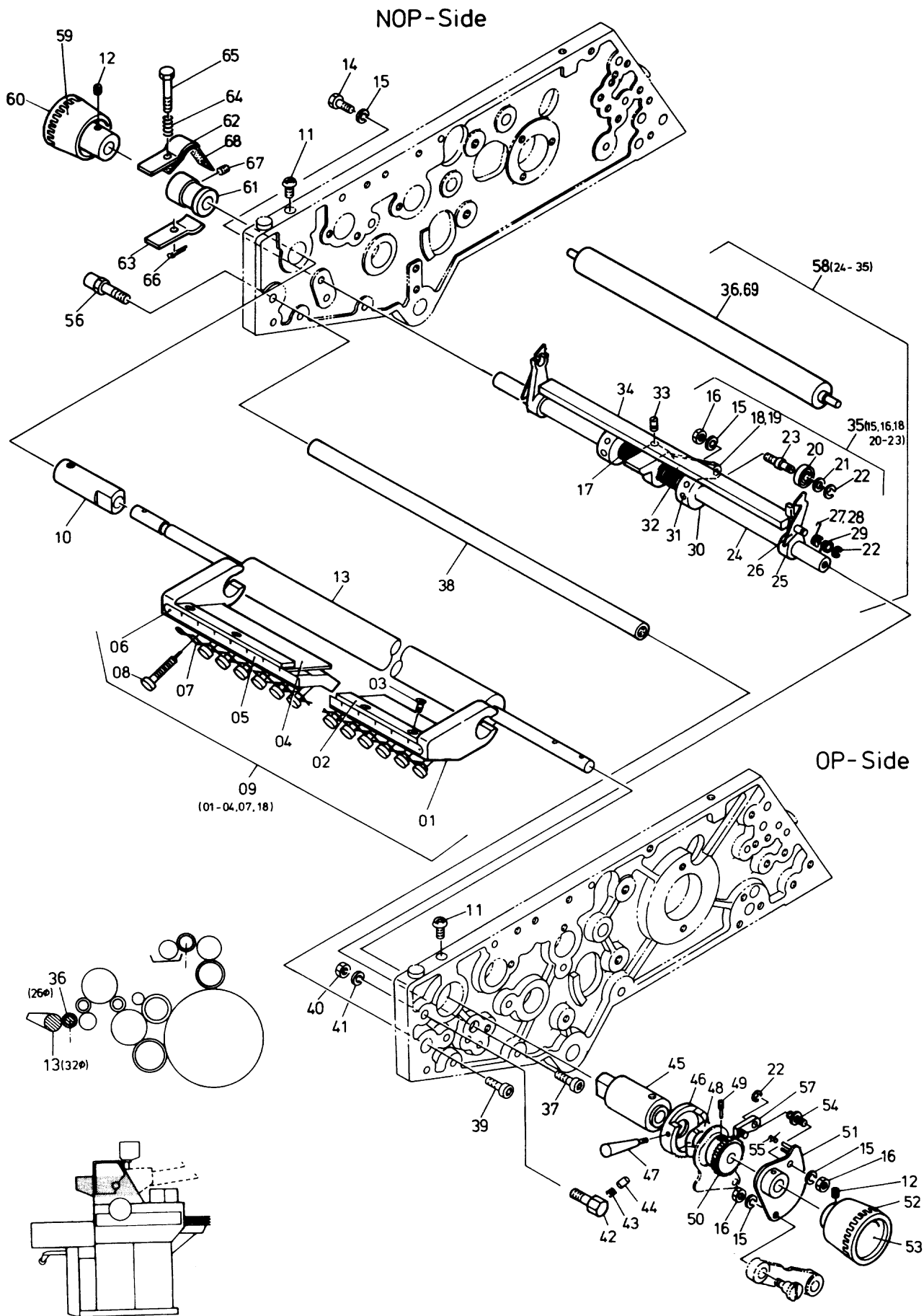
**Inking Section
Form Roller, Oscillation Roller and Idle Roller**

N2034

INDEX No.	Parts No.	Description	Remarks	Units Per Assy				
				ECD	EXL	CD	XL	XLA
01	CP03-43A	Oscillating Mechanism Hub		1	1	1	1	1
02	G26-86-3	Oscillator Worm Cam Follower (Dog)		1	1	1	1	1
03	CP03-44	Collar		1	1	1	1	1
04	I03-57-3	Oscillator Worm Cam		1	1	1	1	1
05	I03-58-3	Roller Pin		1	1	1	1	1
06	H08-16-3	Ink Oscillator Roller Bushing	Included in 01, 15	2	2	2	2	2
07	PC02-85	Night Latch Cam		2	2	2	2	2
08	182-146	Taper Pin		2	2	2	2	2
09	PC11-31	Ratchet Drive Lever	For 612CD, XL, XLA	1	1	1	1	1
10	184-410	E-Ring		1	1	1	1	1
11	CP03-42	Ink Oscillating Roller Shell		0	0	1	1	1
12	CP03-47	Ink Oscillating Roller Tie Rod		0	0	2	2	2
13	CP03-06	Ink Oscillating Roller Shaft		0	0	1	1	1
14	I03-60-3	Ink Oscillator Bracket		2	2	2	2	2
15	I03-52-1A-3	Ink Oscillating Roller Takeup Hub		1	1	1	1	1
16	CP03-42A	Ink Oscillating Roller Assy		1	1	1	1	1
17	PC03-32	Distributor Drive Gear		1	1	1	1	1
18	183-207	Roll Pin	Included in 20, 67	2	2	2	2	2
19	PC03-31	Timing Pinion Gear	Included in 20, 67 ~ HV-3669	1	1	1	1	0
20	CP03-04A	Oscillating Ink Distributor Roller	~ HV-3669	0	0	1	1	0
21	PC03-11A	Lower Form Roller	Spec. 1 For 612CD, XL, XLA	0	0	1	1	1
22	PC03-71A	Lower Form Roller	Spec. 2 For 612CD, XL, XLA	0	0	1	1	1
23	PC03-73A	Lower Form Roller	Spec. 3 For 612CD, XL, XLA	0	0	1	1	1
24	PC03-75A	Lower Form Roller	Spec. 4 For 612CD, XL, XLA	0	0	1	1	1
25	PC03-69A	Lower Form Roller	Spec. 1 For 611CD, XL, XLA	0	0	1	1	1
26	PC03-63A	Lower Form Roller	Spec. 2 For 611CD, XL, XLA	0	0	1	1	1
27	PC03-65A	Lower Form Roller	Spec. 3 For 611CD, XL, XLA	0	0	1	1	1
28	PC03-67A	Lower Form Roller	Spec. 4 For 611CD, XL, XLA	0	0	1	1	1
29	I03-49-3	Form Roller Hub	Included in 21 ~ 28, 35 ~ 42	4	4	4	4	4
30	I03-48-3	Bearing	Included in 21 ~ 28, 35 ~ 42	4	4	4	4	4
31	CP03-20A	Ink Form Roller Shaft		2	2	2	2	2
32	I18-46-1A-3	Form Roller Handle		2	2	2	2	2
33	CP03-20B	Form Roller Shaft with Handle		2	2	2	2	2
34	CP03-14	Bushing	Included in 52	2	2	2	2	2
35	PC03-10A	Upper Form Roller	Spec. 1 For 612CD, XL, XLA	0	0	1	1	1
36	PC03-70A	Upper Form Roller	Spec. 2 For 612CD, XL, XLA	0	0	1	1	1
37	PC03-72A	Upper Form Roller	Spec. 3 For 612CD, XL, XLA	0	0	1	1	1
38	PC03-74A	Upper Form Roller	Spec. 4 For 612CD, XL, XLA	0	0	1	1	1
39	PC03-68A	Upper Form Roller	Spec. 1 For 611CD, XL, XLA	0	0	1	1	1
40	PC03-62A	Upper Form Roller	Spec. 2 For 611CD, XL, XLA	0	0	1	1	1
41	PC03-64A	Upper Form Roller	Spec. 3 For 611CD, XL, XLA	0	0	1	1	1
42	PC03-66A	Upper Form Roller	Spec. 4 For 611CD, XL, XLA	0	0	1	1	1
43	CP03-02	Ink Idle Roller	Rubber	0	0	2	2	2
44	CP03-11	Bushing		6	6	6	6	6
45	181-405	E-Ring		6	6	6	6	6
46	CP03-01	Ink Idle Roller	Rilsan	0	0	1	1	1
47	CP03-12	Night Latch Shaft		1	1	1	1	1
48	I03-10-3	Collar		1	1	1	1	1
49	183-186	Roll Pin		1	1	1	1	1
50	H08-16-3	Bushing	Included in 51, 66	2	2	2	2	2
51	CP03-10A	Idle Gear with Bushing	~ HV-3669	1	1	1	1	0
52	CP01-01A	Inking System Frame	OP-S	1	1	1	1	1
53	180-105	Lock Washer		3	3	3	3	3
54	170-105	Nut		2	2	2	2	2
55	125-708	Screw		3	3	3	3	3
56	183-225	Roll Pin		2	2	2	2	2
57	CP03-01A	Ink Idle Roller Assy	Rilsan	0	0	1	1	1
58	CP03-02A	Ink Idle Roller Assy	Rubber	0	0	2	2	2
59	117-370	Screw		4	4	4	4	4
60	CP03-41	Bracket		2	2	2	2	2
61	CP03-39	Bracket	OP-S	1	1	1	1	1
62	117-520	Screw		2	2	2	2	2
63	CP03-40	Bracket	NOP-S	1	1	1	1	1
64	184-105	Washer		1	1	1	1	1
65	I23-18-3	Retaining Washer		2	2	2	2	2
66	CP03-60A	Idle Gear with Bushing	HV-3670 ~	1	1	1	1	1
67	CP03-58A	Oscillating Ink Distributor Roller	HV-3670 ~	0	0	1	1	1
68	CP03-61	Timing Pinion Gear	HV-3670 ~	1	1	1	1	1
69	5103-03007	Oscillating Ink Distributor Roller		1	1	0	0	0
70	5103-03001	Lower Form Roller	For 612ECD, EXL	1	1	0	0	0

NOP-Side

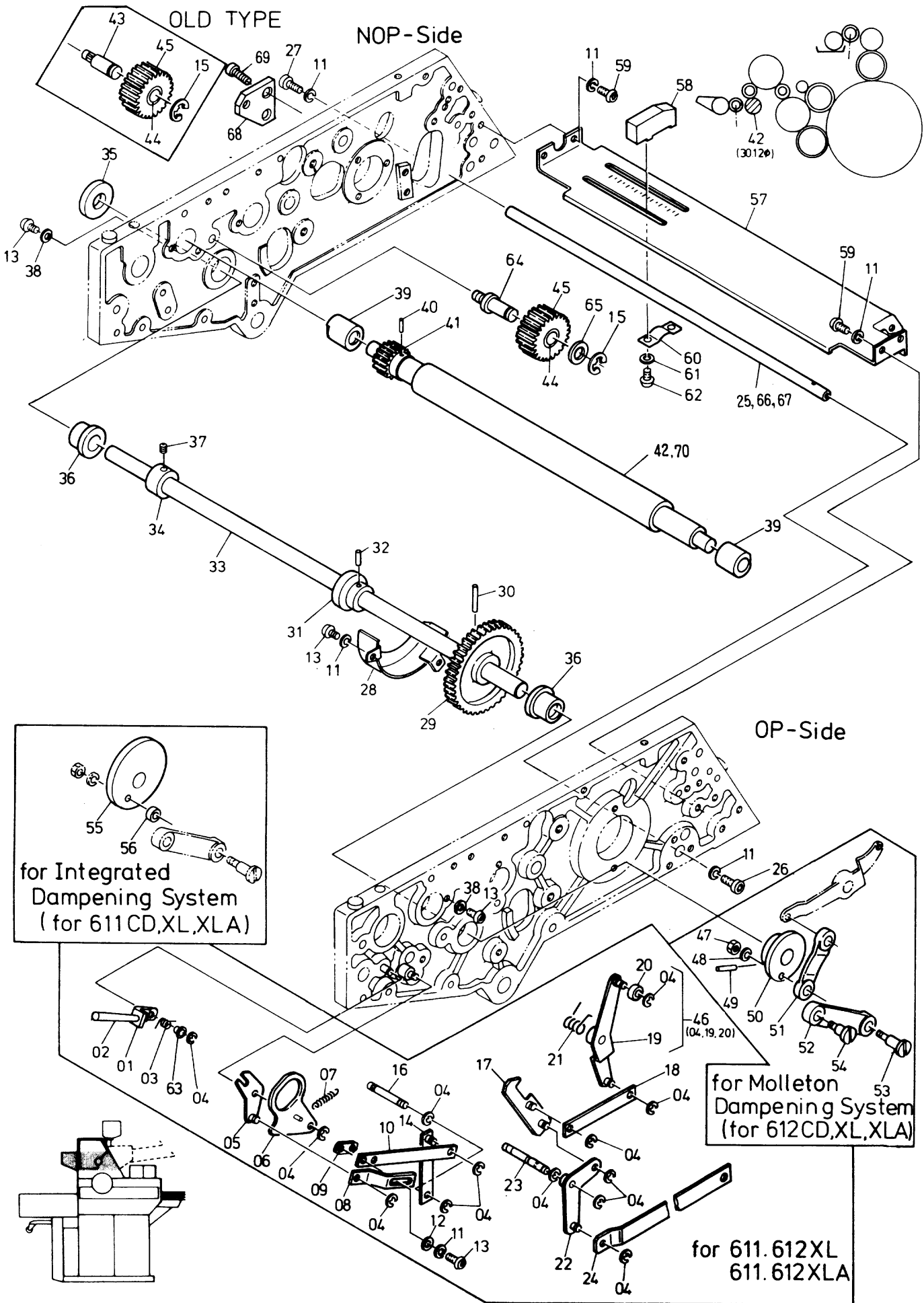




**Inking Section
Ink Ductor Roller and Ink Fountain**

N2035

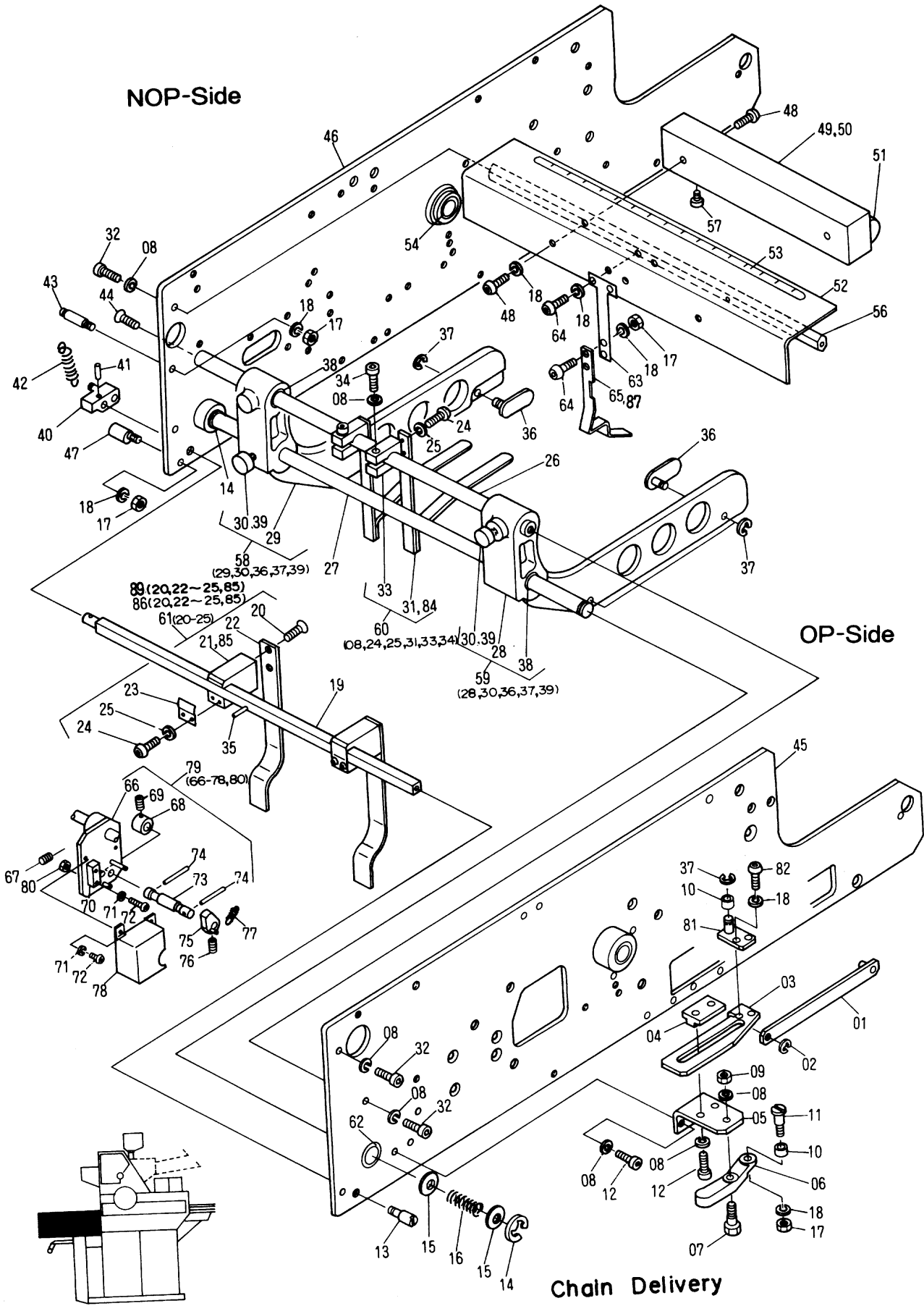
INDEX No.	Parts No.	Description	Remarks	Units Per Assy				
				ECD	EXL	CD	XL	XLA
01	PC02-01A	Ink Fountain		1	1	1	1	1
02	PC02-06	Ink Fountain Blade Clamp		1	1	1	1	1
03	122-112	Screw		6	6	6	6	6
04	PC02-09	Ink Fountain Blade		1	1	1	1	1
05	PC02-05	Ink Fountain Scale	Included in 01	1	1	1	1	1
06	H11-50-3	Rivet	Included in 01	3	3	3	3	3
07	PC02-58	Wire		1	1	1	1	1
08	I02-05-3	Ink Fountain Adjustment Thumb Screw		16	16	16	16	16
09	PC02-01B	Ink Fountain Assy	NOP-S	1	1	1	1	1
10	CP02-03	Ink Fountain Roller Bushing	NOP-S	1	1	1	1	1
11	125-712	Screw		2	2	2	2	2
12	140-360	Screw		2	2	2	2	2
13	CP02-01	Ink Fountain Roller	NOP-S	1	1	1	1	1
14	101-380	Screw	NOP-S	1	1	1	1	1
15	180-106	Lock Washer		4	4	4	4	4
16	170-106	Nut		3	3	3	3	3
17	I01-13-01-3	Spring	NOP-S	1	1	1	1	1
18	CP02-23A	Ductor Operating Arm		1	1	1	1	1
19	I01-41-3	Bushing	Included in 18	1	1	1	1	1
20	250-126.6	Cam Follower		1	1	1	1	1
21	184-106	Flat Washer		1	1	1	1	1
22	181-404	E-Ring		3	3	3	3	3
23	I01-21-3	Cam Follower Pin		1	1	1	1	1
24	CP03-05	Ductor Frame Shaft		1	1	1	1	1
25	I01-30-3	Ductor Roller Bracket		2	2	2	2	2
26	I01-31-3	Ductor Roller Latch		2	2	2	2	2
27	I01-32-3	Spring	NOP-S	1	1	1	1	1
28	I01-33-3	Spring	OP-S	1	1	1	1	1
29	I01-43-3	Spring Hub		2	2	2	2	2
30	I01-12-3	Adjustment Collar		2	2	2	2	2
31	145-510	Set Screw		6	6	6	6	6
32	I01-13-02-3	Spring	OP-S	1	1	1	1	1
33	I01-19-3	Screw		1	1	1	1	1
34	PC02-10	Ductor Bracket Spreader		1	1	1	1	1
35	CP02-23B	Eccentric Cam Follower		1	1	1	1	1
36	PC03-03	Ink Ductor Roller		0	0	1	1	1
37	117-366	Screw	OP-S	1	1	1	1	1
38	CP02-28	Spreader		1	1	1	1	1
39	117-470	Screw		1	1	1	1	1
40	170-108	Nut		1	1	1	1	1
41	180-108	Lock Washer		1	1	1	1	1
42	CP02-30	Stud		1	1	1	1	1
43	I02-30-3	Spring		1	1	1	1	1
44	I02-29-3	Snubber		1	1	1	1	1
45	CP02-02	Ink Fountain Roller Bushing	OP-S	1	1	1	1	1
46	PC02-07A	Ratchet Control Hub with Handle		1	1	1	1	1
47	I24-41-01-3	Ink Ratchet Handle	Included in 46	1	1	1	1	1
48	I02-56-3	Lock Washer		1	1	1	1	1
49	M04-37-3	Pilot Screw		1	1	1	1	1
50	I02-14-3	Ink Fountain Ratchet Wheel		1	1	1	1	1
51	I02-16-1A-3	Drive Pawl Plate		1	1	1	1	1
52	4810-22052B	Ink Fountain Roller Knob with Name Plate	OP-S	1	1	1	1	1
53	PC03-37	Name Plate	Included in 52	1	1	1	1	1
54	I02-19-3	Drive Pawl Stud		1	1	1	1	1
55	I02-25-3	Drive Pawl Spring		1	1	1	1	1
56	CP02-35	Stud Screw		1	1	1	1	1
57	I02-23-1A-3	Drive Pawl		1	1	1	1	1
58	CP03-05A	Ductor Roller Frame Assy		1	1	1	1	1
59	4810-22052C	Ink Fountain Roller Knob with Name Plate	NOP-S	1	1	1	1	1
60	PC03-38	Name Plate	Included in 59	1	1	1	1	1
61	B56-37-3	Brake Drum		1	1	1	1	1
62	KR-80	Brake Shoe (A)		1	1	1	1	1
63	KR-81	Brake Shoe (B)		1	1	1	1	1
64	KR-82	Spring		1	1	1	1	1
65	KR-88	Screw		1	1	1	1	1
66	183-725	Cotter Pin		1	1	1	1	1
67	145-356	Screw		1	1	1	1	1
68	CP18-68	Brake Band		1	1	1	1	1
69	5103-03006	Ink Ductor Roller		1	1	0	0	0



**Inking Section
Cam Shaft and Related Part's for OP-Side Frame**

N2036

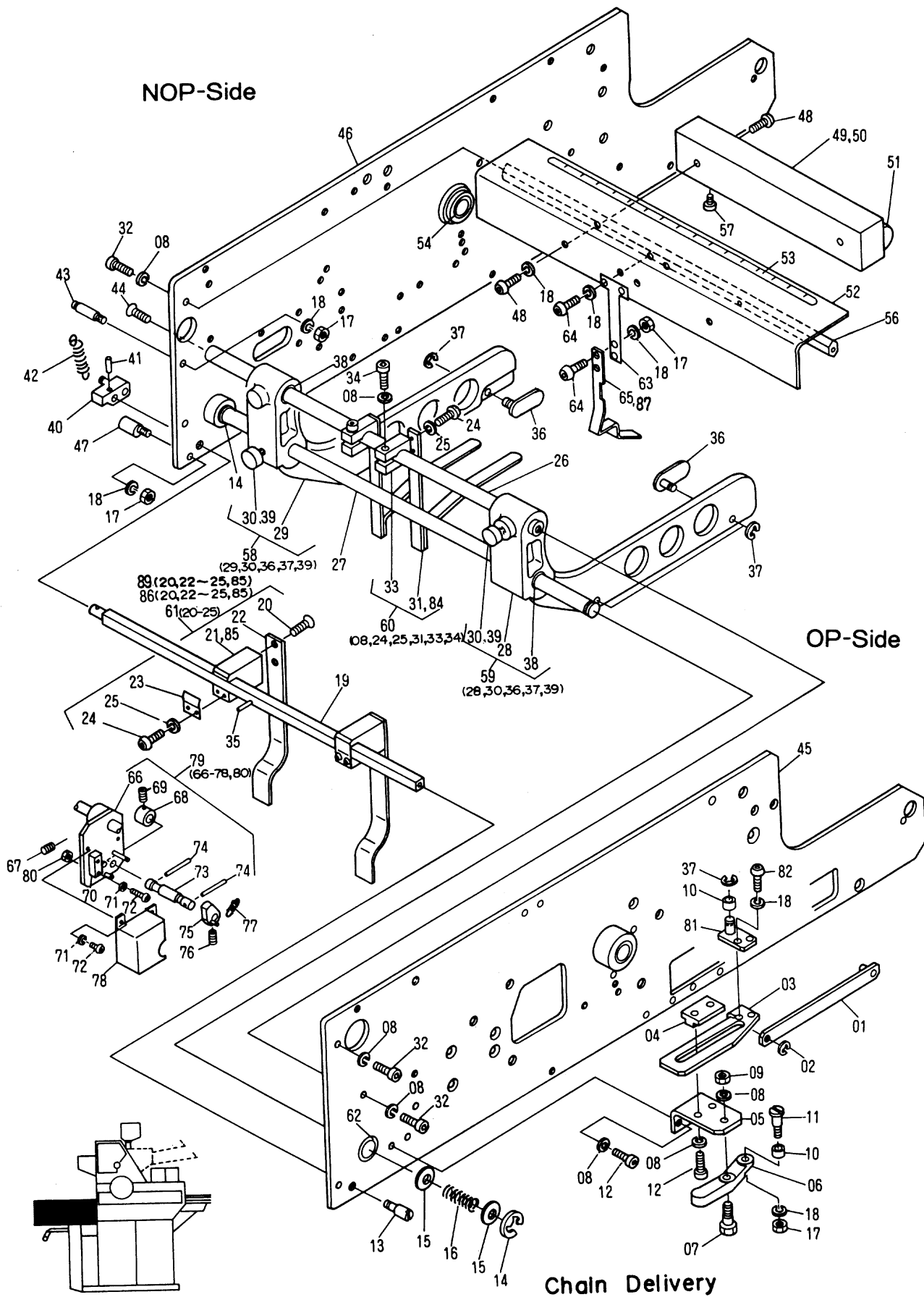
INDEX No.	Parts No.	Description	Remarks	Units Per Assy				
				ECD	EXL	CD	XL	XLA
01	PC02-15A	Ink Feed Cam		0	1	0	1	1
02	I24-41-01-3	Ink Ratchet Stop Lever Handle	Included in 01	0	1	0	1	1
03	I02-78-01-3	Spring		0	1	0	1	1
04	181-404	E-Ring		0	13	0	13	13
05	CP02-06A	Lever		0	1	0	1	1
06	PC02-12A	Ratchet Release Plate		0	1	0	1	1
07	KV-82	Spring		0	1	0	1	1
08	CP02-07	Link		0	1	0	1	1
09	I02-68-3	Block		0	1	0	1	1
10	CP02-05	Link		0	1	0	1	1
11	180-105	Lock Washer		8	9	8	10	10
12	184-105	Flat Washer		0	2	0	2	2
13	125-708	Screw		4	6	4	6	6
14	CP02-04A	Lever		0	1	0	1	1
15	181-410	E-Ring		1	1	1	1	1
16	CP02--24	Stud Pin		0	1	0	1	1
17	CP02-08A	Hook		0	1	0	1	1
18	CP02-09	Link		0	1	0	1	1
19	CP02-10A	Lever		0	1	0	1	1
20	A03-51-3	Bearing		0	1	0	1	1
21	PC02-30	Spring		0	1	0	1	1
22	CP02-12A	Lever		0	1	0	1	1
23	CP02-25	Stud Pin		0	1	0	1	1
24	CP02-26	Link		0	1	0	1	1
25	CP02-32	Spreader	~ HV-3731	0	0	1	1	0
26	117-515	Screw		1	1	1	1	1
27	117-525	Screw		1	1	1	1	1
28	CP03-31	Gear Cover		1	1	1	1	1
29	PC03-34	Cam Shaft Gear		1	1	1	1	1
30	183-208	Roll Pin		1	1	1	1	1
31	I02-35-3	Cam		1	1	1	1	1
32	183-207	Roll Pin		1	1	1	1	1
33	CP03-09	Cam Shaft		1	1	1	1	1
34	M05-37-3	Collar		1	1	1	1	1
35	CP03-22	Spacer		1	1	1	1	1
36	CP03-30	Bushing		2	2	2	2	2
37	145-356	Screw		1	1	1	1	1
38	I23-18-3	Retaining Washer		2	2	2	2	2
39	CP03-15	Bushing		2	2	2	2	2
40	183-207	Roll Pin		1	1	1	1	1
41	CP03-16	Intermediate Distributor Roller Gear	Included in 42	1	1	1	1	1
42	CP03-03A	Gear Driven Distributor Roller		0	0	1	1	1
43	CP03-07	Stud Pin	~ HV-3669	1	1	1	1	0
44	CP03-49	Bushing	Included in 45	2	2	2	2	2
45	CP03-08A	Idle Gear		1	1	1	1	1
46	CP02-10B	Link		0	1	0	1	1
47	170-106	Nut		1	1	1	1	1
48	180-106	Lock Washer		1	1	1	1	1
49	183-209	Roll Pin		1	1	1	1	1
50	I02-39-01-3	Timing Cam	Molleton System	1	1	1	1	1
51	R02-32-01-3	Ratchet Drive Link	Molleton System	1	1	1	1	1
52	CP03-13	Ratchet Drive Link		1	1	1	1	1
53	I02-45-01-3	Shoulder Screw		1	1	1	1	1
54	I02-42-3	Shoulder Screw		1	1	1	1	1
55	CP18-56	Timing Cam	Integrated System	1	1	1	1	1
56	PC18-56	Spacer	Integrated System	1	1	1	1	1
57	CM04-07	Guide Plate		1	1	1	1	1
58	MC14-47	Collar		1	1	1	1	1
59	125-710	Screw		4	4	4	4	4
60	MC14-46	Spring		1	1	1	1	1
61	180-104	Lock Washer		2	2	2	2	2
62	125-658	Screw		2	2	2	2	2
63	I01-43-3	Spacer		0	1	0	1	1
64	CP03-59	Stud Pin	HV-3670 ~	1	1	1	1	1
65	I23-54-3	Spacer	HV-3670 ~	1	1	1	1	1
66	4808-06022	Spreader	~ HV-3731	0	0	0	0	1
67	4808-06056	Spreader	HV-3732 ~	1	1	1	1	1
68	CP01-05	Block	Included in N2037-66	1	1	1	1	0
69	117-362	Screw	HV-3732 ~	2	2	2	2	0
70	5103-03005A	Gear Driven Distributor Roller		1	1	0	0	0



**Chain Delivery Section
Front Guide and Delivery Pile Guide**

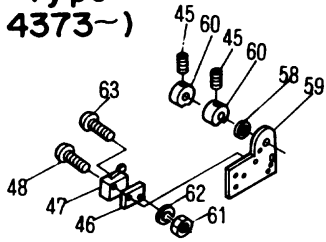
N2044

INDEX No.	Parts No.	Description	Remarks	Units Per Assy				
				ECD	EXL	CD	XL	XLA
01	CH03-10A	Drive Lever		1	1	1	1	1
02	181-405	E-Ring		1	1	1	1	1
03	CH03-35A	Cam		1	1	1	1	1
04	CH03-37	Guide Block		1	1	1	1	1
05	CH03-36	Bracket		1	1	1	1	1
06	CH03-03	Delivery Guide Operating Lever		1	1	1	1	1
07	X02-41-3	Shoulder Screw		1	1	1	1	1
08	180-106	Lock Washer		10	10	10	10	10
09	170-106	Nut		1	1	1	1	1
10	PO-25	Guide Roller		2	2	2	2	2
11	I53-06-3	Shoulder Screw		1	1	1	1	1
12	117-362	Screw		4	4	4	4	4
13	A14-02-3	Stud		1	1	1	1	1
14	181-410	E-Ring		2	2	2	2	2
15	A04-51-3	Washer		2	2	2	2	2
16	A18-52-3	Spring		1	1	1	1	1
17	170-105	Nut		5	5	5	5	5
18	180-105	Lock Washer		13	13	13	13	13
19	CH03-18A	Front Guide Cross Bar		1	1	1	1	1
20	122-108	Screw		4	4	4	4	4
21	CH03-20	Front Guide Bracket		0	0	2	2	2
22	CH03-48	Front Guide		2	2	2	2	2
23	CH03-30	Front Guide Bracket Mounting Plate		2	2	2	2	2
24	125-658	Screw		8	8	8	8	8
25	180-104	Lock Washer		8	8	8	8	8
26	CH01-04	Delivery Frame Outer Spreader		1	1	1	1	1
27	CH01-08	Delivery Jogger Shaft		1	1	1	1	1
28	CH03-50A	Delivery Pile Guide	OP-S	1	1	1	1	1
29	CH03-49A	Delivery Pile Guide	NOP-S	1	1	1	1	1
30	A04-63-3	Thumb Screw		2	2	2	2	2
31	CH02-19	Paper Stopper		0	0	2	2	2
32	117-365	Screw		3	3	3	3	3
33	HC02-60	Stripper Bracket		0	0	2	2	2
34	117-370	Screw		2	2	2	2	2
35	183-209	Roll Pin	Included in 19	1	1	1	1	1
36	DJ-60-1A	Guide Piece		4	4	4	4	4
37	181-406	E-Ring		5	5	5	5	5
38	243-624	Bushing	Included in 28, 29	4	4	4	4	4
39	A04-80-3	Pad		2	2	2	2	2
40	CH03-19A	Front Guide Shaft Lever		1	1	1	1	1
41	183-182	Roll Pin		1	1	1	1	1
42	A14-09-3	Spring		1	1	1	1	1
43	H30-15-3	Pin		1	1	1	1	1
44	122-165	Screw		1	1	1	1	1
45	CH01-01A	Delivery Frame	OP-S	1	1	1	1	1
46	CH01-15A	Delivery Frame	NOP-S	1	1	1	1	1
47	H07-30-3	Eccentric Pin		1	1	1	1	1
48	125-706	Screw		4	4	4	4	4
49	E24-09-3	Fluorescent Work Light Hodler	For 60Hz	1	1	1	1	1
50	E24-10-3	Fluorescent Work Light Holder	For 50Hz	1	1	1	1	1
51	E24-02-01-3	Fluorescent Work Light		1	1	1	1	1
52	CK18-01A	Fluorescent Work Light Cover		1	1	1	1	1
53	HC01-24	Scale		1	1	1	1	1
54	A01-09-3	Bushing	Included in 46	1	1	1	1	1
55	HC02-42	Bushing	Included in 45	1	1	1	1	1
56	CH01-10	Delivery Frame Spreader		1	1	1	1	1
57	E24-14-3	Glow Lamp		1	1	1	1	1
58	CH03-49B	Delivery Pile Guide Assy	(29, 30, 36 ~ 38)	1	1	1	1	1
59	CH03-50B	Delivery Pile Guide Assy	(28, 30, 36 ~ 38)	1	1	1	1	1
60	CH02-19A	Paper Stopper Assy	(08, 24, 25, 31, 33, 34)	0	0	2	2	2
61	CH03-20A	Front Guide Assy	(20 ~ 25)	2	2	2	2	2
62	A01-11-3	Bushing	Included in 45, 46	2	2	2	2	2
63	CH03-58	Holding Finger Bracket		1	1	1	1	1
64	125-708	Screw		4	4	4	4	4
65	CH03-57	Holding Finger		0	0	1	1	1
66	EA21-06A	Bracket	Optional for 611, 612CD	(1)	1	(1)	1	1
67	145-356	Set Screw	Optional for 611, 612CD	(1)	1	(1)	1	1
68	185-0816.01	Collar	Optional for 611, 612CD	(1)	1	(1)	1	1
69	145-506	Screw	Optional for 611, 612CD	(1)	1	(1)	1	1
70	E10-38-3	Microswitch	Optional for 611, 612CD	(1)	1	(1)	1	1

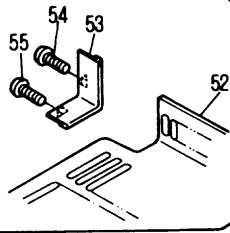


Chain Delivery

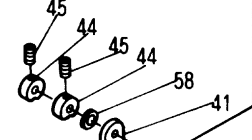
**New Type
(HV-4373~)**



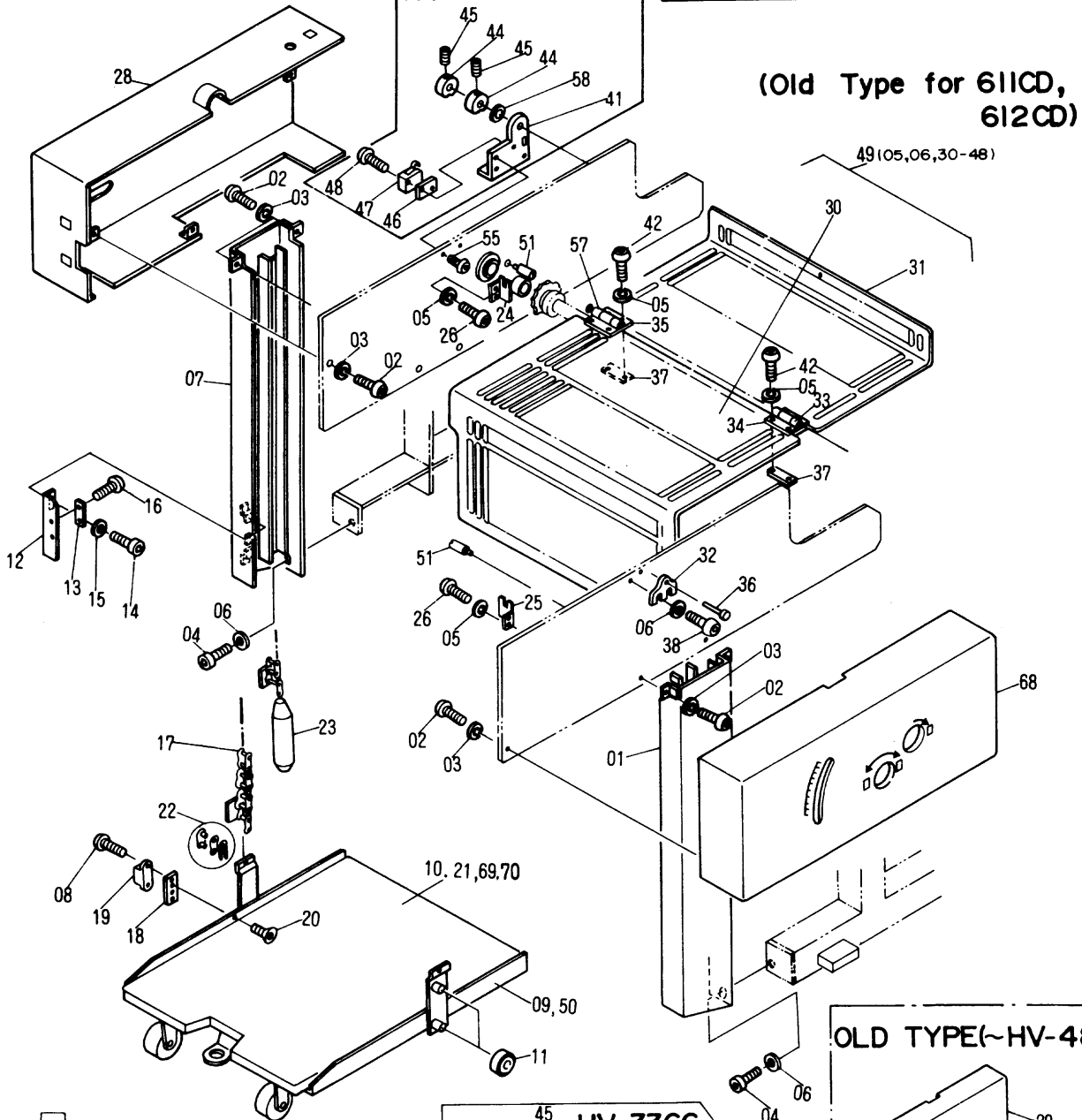
**New Type for 6I1XL, 6I2XL
6I1CD, 6I2CD
HV-2440~**



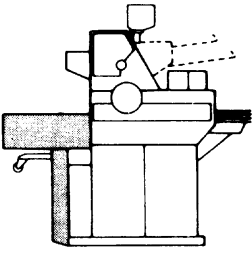
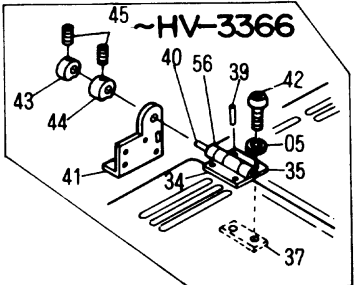
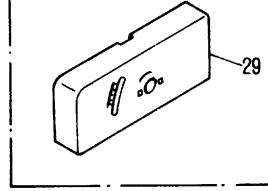
HV-3367~



**(Old Type for 6I1CD,
6I2CD)**



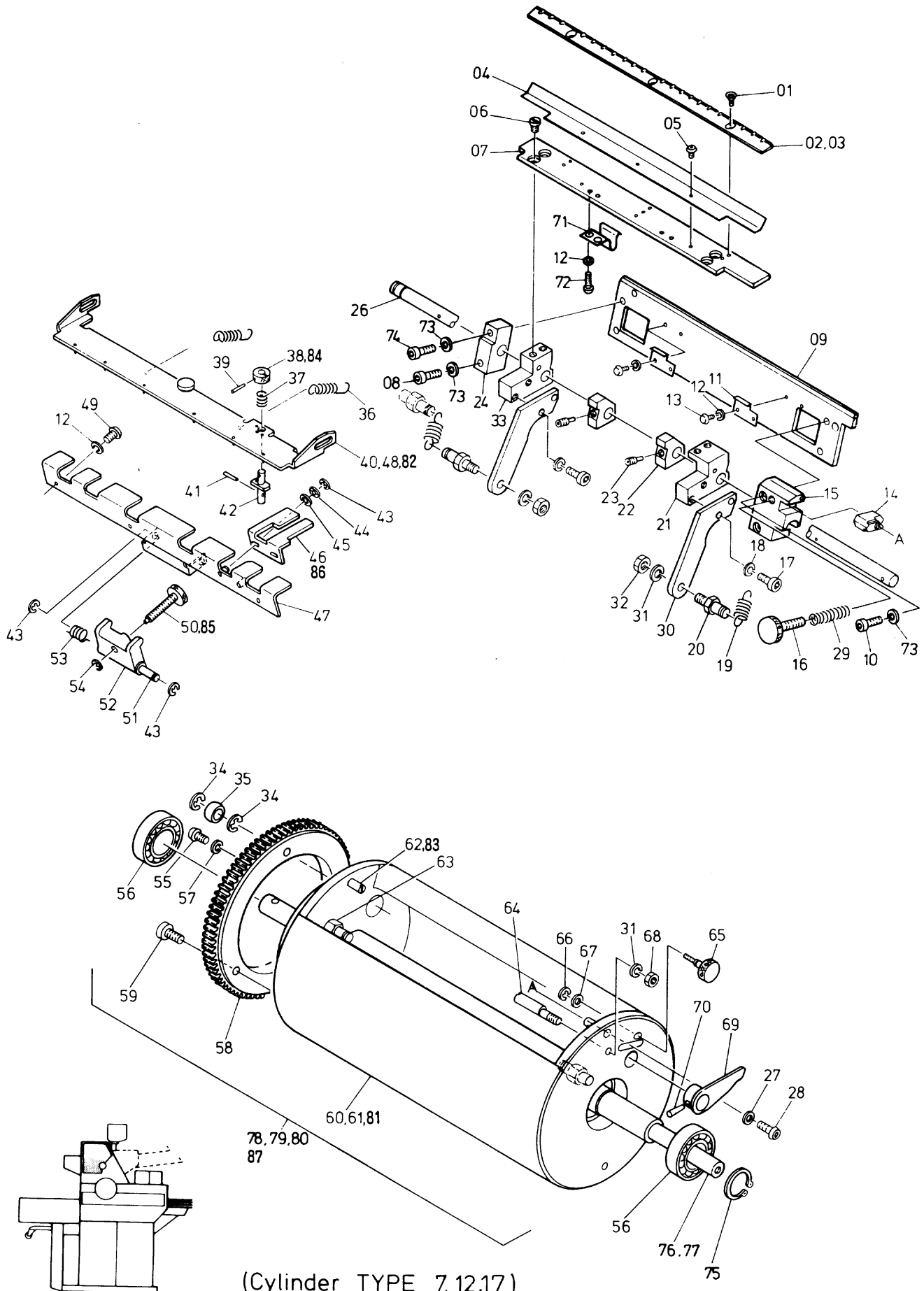
OLD TYPE (~HV-4847)



**Chain Delivery Section
Delivery Cover and Delivery Tray**

N2047

INDEX No.	Parts No.	Description	Remarks	Units Per Assy				
				ECD	EXL	CD	XL	XLA
01	CH05-01	Chain Delivery Cover Panel	OP-S	1	1	1	1	1
02	125-760	Screw		10	10	10	10	10
03	180-106	Lock Washer		6	6	6	6	6
04	117-510	Screw		6	6	6	6	6
05	180-105	Lock Washer		18	18	18	18	18
06	184-105	Flat Washer		6	4	6	4	6
07	CH05-02A	Chain Delivery Cover Panel	NOP-S	1	1	1	1	1
08	125-608	Screw		2	2	2	2	2
09	CH05-13A	Delivery Table	~ HV-2120	0	0	1	1	0
10	CH05-10A	Delivery Tray	~ HV-2120	0	0	1	1	0
11	H12-13-3	Delivery Table Guide Roller		4	4	4	4	4
12	HC05-14	Senser Bracket		1	1	1	1	1
13	E10-12-3	Senser		1	1	1	1	1
14	117-408	Screw		2	2	2	2	2
15	184-104	Flat Washer		8	8	8	8	8
16	125-612	Screw		2	2	2	2	2
17	CH05-05A	Chain		2	2	2	2	2
18	CH05-12	Magnet Bracket		1	1	1	1	1
19	E10-14-3	Magnet		1	1	1	1	1
20	122-306	Screw		2	2	2	2	2
21	CH05-14A	Delivery Tray	HV-2121 ~	0	0	1	1	1
22	280-005.2	Chain Connecting Link	Included in 17	2	2	2	2	2
23	H09-29-1A-3	Chain Weight		2	2	2	2	2
24	HC05-12	Chain Guard	NOP-S	1	1	1	1	1
25	HC05-13	Chain Guard	OP-S	1	1	1	1	1
26	125-706	Screw		4	4	4	4	4
27								
28	CH10-02	Chain Delivery Cover	NOP-S	1	1	1	1	1
29	CH10-01	Chain Delivery Cover	~ HV-4847	1	1	1	1	1
30	CH10-04	Delivery Shield, Hinged Panel		1	1	1	1	1
31	CH10-03	Delivery Shield, Hinged Panel		1	1	1	1	0
32	CK13-21	Hinge Bracket	OP-S	2	1	2	1	1
33	G09-08-3	Hinge		1	1	1	1	1
34	C09-07-3	Hinge		2	2	2	2	1
35	CK13-10	Hinge		1	1	1	1	0
36	G09-09-3	Hinge Pin		1	1	1	1	1
37	CK13-06	Nut		4	4	4	4	4
38	125-712	Screw		4	2	4	2	2
39	183-148	Roll Pin	Included in 35	1	1	1	1	0
40	CK13-07	Hinge Pin		1	1	1	1	0
41	CK13-13	Hinge Bracket	NOP-S	1	1	1	1	1
42	125-708	Screw		8	8	8	8	8
43	CK13-12	Microswitch Operating Cam		1	1	1	1	0
44	CK13-11	Microswitch Operating Cam		1	1	1	1	2
45	145-408	Set Screw		2	2	2	2	2
46	CK13-15	Safety Switch Base		1	1	1	1	1
47	E10-29-3	Microswitch		1	1	1	1	1
48	125-620	Screw		2	2	2	2	2
49	CH10-03A	Delivery Shield, Hinged Cover Assy (05, 06, 30 ~ 48)		1	1	1	1	0
50	CH05-15A	Delivery Table	HV-2121 ~	1	1	1	1	1
51	H09-25-3	Chain Stop		2	2	2	2	2
52	CH10-05	Delivery Shield Hinged Panel		1	1	1	1	1
53	CH10-06	Cover		1	1	1	1	1
54	125-720	Screw		1	1	1	1	1
55	125-710	Screw		3	3	3	3	3
56	CK13-08	Hinge Pin		1	1	1	1	0
57	CK13-25B	Hinge Assy	HV-3367 ~	1	1	1	1	1
58	184-106	Flat Washer		1	1	1	1	1
59	CK13-27	Hinge Bracket		1	1	1	1	1
60	CK13-26	Micro Switch Operating Cam		1	1	1	1	1
61	170-103	Nut	- HV-4373 ~	1	1	1	1	1
62	180-103	Lock Washer		1	1	1	1	1
63	125-618	Screw		1	1	1	1	1
64								
65								
66								
67								
68	CH10-08	Chain Delivery Cover	HV-4848 ~	1	1	1	1	1
69	CH20-01A	Delivery Tray	HV-4776 ~	0	0	1	1	1
70	5104-05016	Delivery Tray		1	1	0	0	0

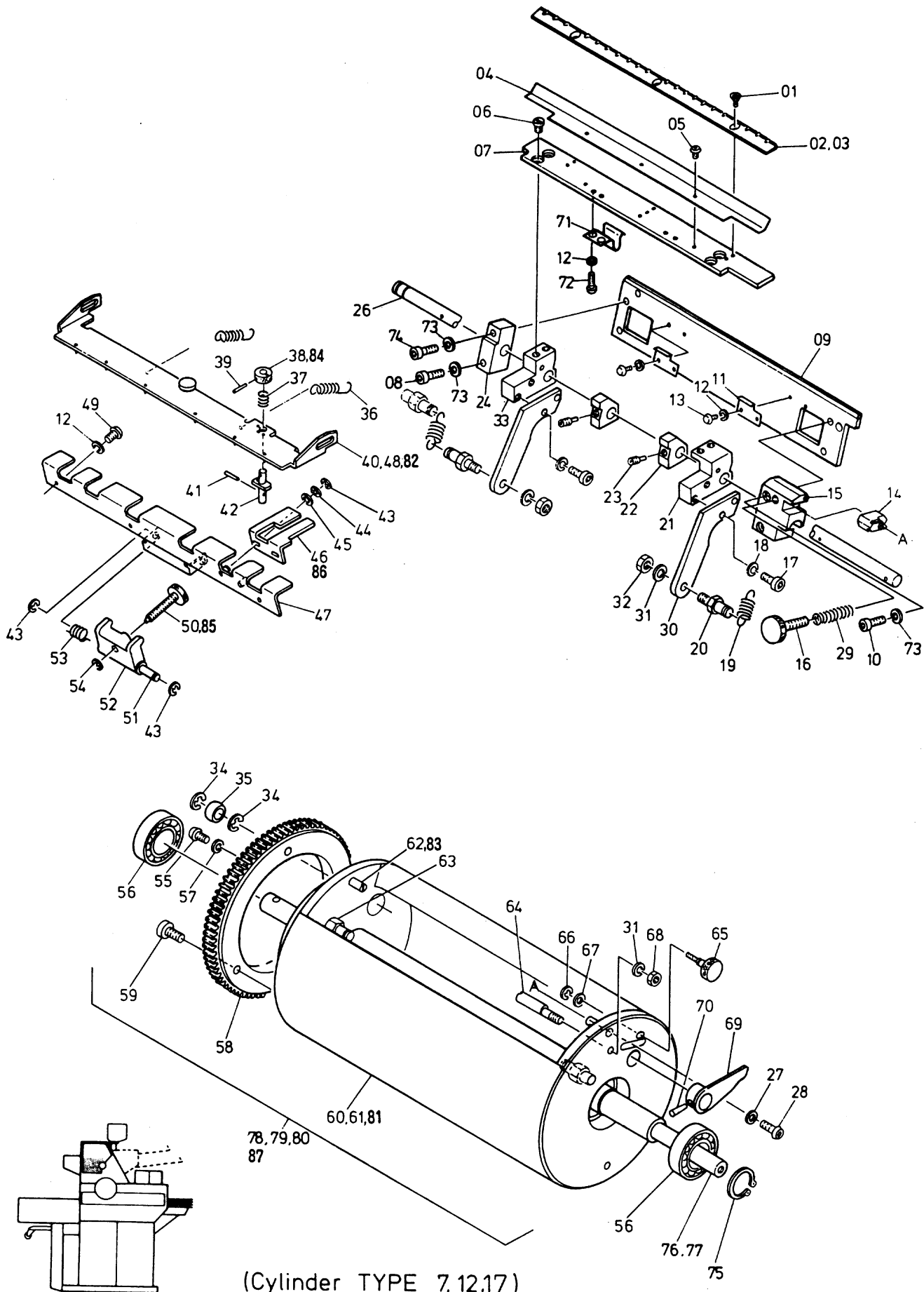


(Cylinder TYPE 7,12,17)
NEW TYPE (HV-3136~)

Plate Cylinder

N2055

INDEX No.	Parts No.	Description	Remarks	Units Per Assy					
				ECD	EXL	CD	XL	XLA	
01	122-055	Screw		3	3	3	3	0	
02	CM14-35	Plate Clamp	Off Center	Pitch 12.7mm	0	0	1	1	0
03	CM14-36	Plate Clamp	On Center	Pitch 12.7mm	1	1	1	1	0
04	CM14-31	Guide Plate			0	0	1	1	0
05	125-656	Screw			3	3	3	3	0
06	CM14-19	Screw			4	4	4	4	0
07	CM14-49	Plate			1	1	1	1	0
08	117-525	Screw			1	1	1	1	0
09	CM14-48A	Plate			1	1	1	1	0
10	117-518	Screw			2	2	2	2	0
11	CM14-14	Stopper			2	2	2	2	0
12	180-104	Lock Washer			12	12	12	12	0
13	125-655	Screw			4	4	4	4	0
14	CM14-23	Guide Key			1	1	1	1	0
15	CM14-51	Block			1	1	1	1	0
16	CM14-25	Screw Knob			1	1	1	1	0
17	117-365	Screw			4	4	4	4	0
18	180-106	Lock Washer			6	6	6	6	0
19	CM14-30	Spring			2	2	2	2	0
20	CM14-09	Stud Bolt			2	2	2	2	0
21	CM14-04A	Block			1	1	1	1	0
22	CM14-32	Block			2	2	2	2	0
23	147-098	Screw			2	2	2	2	0
24	CM14-52	Block			1	1	1	1	0
25	170-106	Nut			2	2	2	2	0
26	CM14-22	Shaft			1	1	1	1	0
27	184-105	Flat Washer			1	1	1	1	0
28	125-715	Screw			1	1	1	1	0
29	CM14-26	Spring			1	1	1	1	0
30	CM14-27	Arm			2	2	2	2	0
31	180-108	Lock Washer			3	3	3	3	0
32	170-108	Nut			2	2	2	2	0
33	CM14-05A	Block			1	1	1	1	0
34	181-410	E-Ring			2	2	2	2	0
35	CM14-13	Bush			1	1	1	1	0
36	CM14-21	Spring			2	2	2	2	0
37	CM14-40	Spring			1	1	1	1	0
38	CM14-18	Knob			0	0	1	1	0
39	183-153.01	Roll Pin			1	1	1	1	0
40	CM14-41A	Guide Plate	Off Center	Pitch 12.7mm	0	0	1	1	0
41	183-151.01	Roll Pin			1	1	1	1	0
42	CM14-17	Rock Pin			1	1	1	1	0
43	181-405	E-Ring			4	4	4	4	0
44	180-176	Flat Spring			2	2	2	2	0
45	I31-09-3	Flat Washer			2	2	2	2	0
46	CM14-20	Lock Plate			0	0	1	1	0
47	CM14-34A	Support Plate			1	1	1	1	0
48	CM14-42A	Guide Plate	On Center	Pitch 12.7mm	0	0	1	1	0
49	125-658	Screw			4	4	4	4	0
50	CM14-12	Adjusting Screw			0	0	1	1	0
51	MC14-15	Pin			1	1	1	1	0
52	CM14-47	Support Plate Bracket			1	1	1	1	0
53	H31-13-3	Spring			1	1	1	1	0
54	181-403	E-Ring			1	1	1	1	0
55	125-762	Screw			3	3	3	3	0
56	M22-02-3	Bearing			2	2	2	2	0
57	184-106.2	Flat Washer			3	3	3	3	0
58	CM04-02	Plate Cylinder Gear			1	1	1	1	0
59	117-472	Screw			3	3	3	3	0
60	CM14-01	Plate Cylinder		for Type 7	0	0	1	1	0
61	CM20-01	Plate Cylinder		for Type 12	0	0	1	1	0
62	CM14-15	Pin			0	0	2	2	0
63	CM14-29	Spring Pin			2	2	2	2	0
64	CM14-16	Eccentric Pin			1	1	1	1	0
65	CM14-24	Adjusting Screw			1	1	1	1	0
66	181-404	E-Ring			1	1	1	1	0
67	184-106	Flat Washer			1	1	1	1	0
68	170-108	Nut			1	1	1	1	0
69	CM14-08A	Lever			1	1	1	1	0
70	182-146	Taper Pin			1	1	1	1	0



(Cylinder TYPE 7,12,17)
NEW TYPE (HV-3136~)

