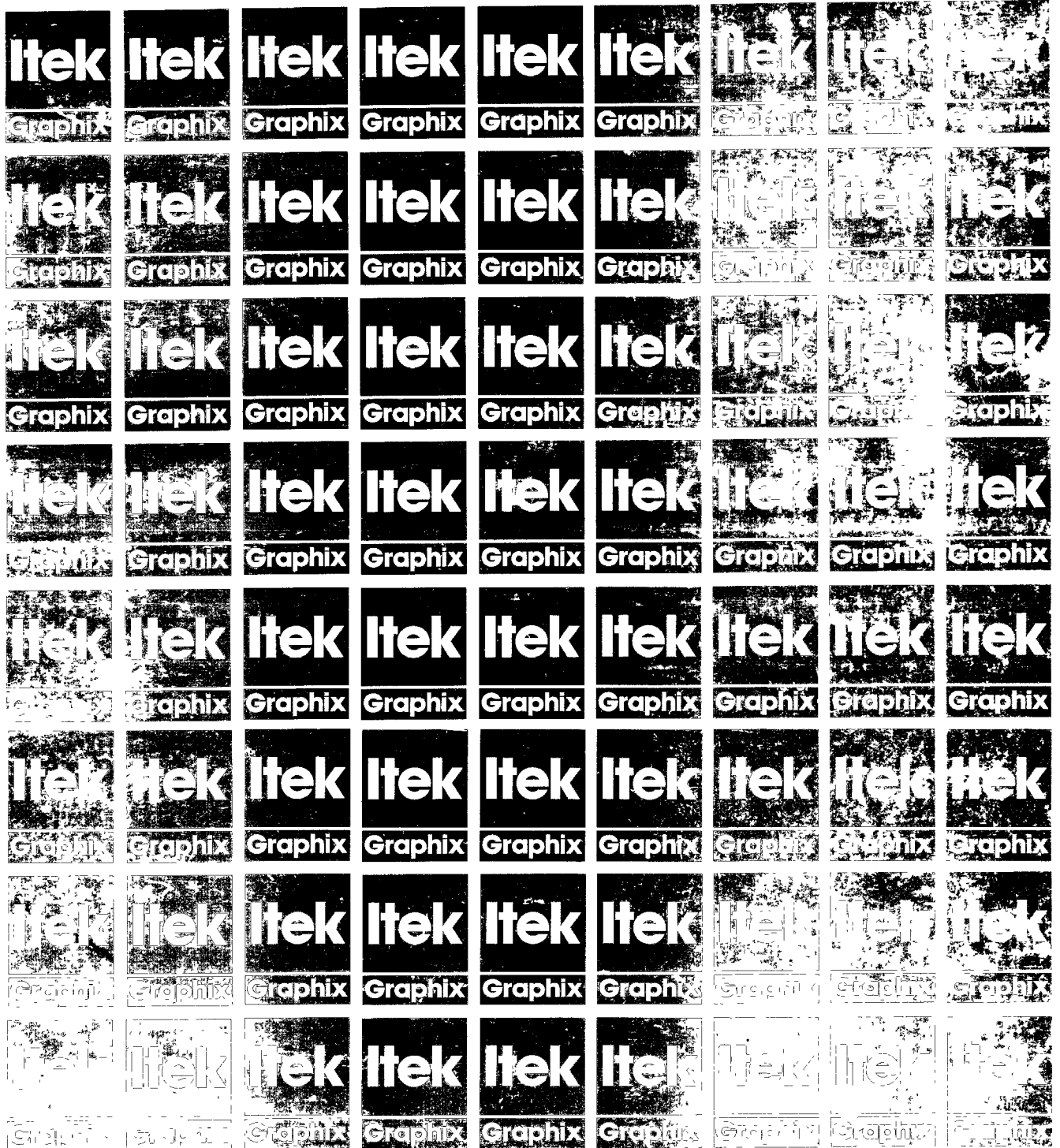


Itek  
613E  
Platemaker

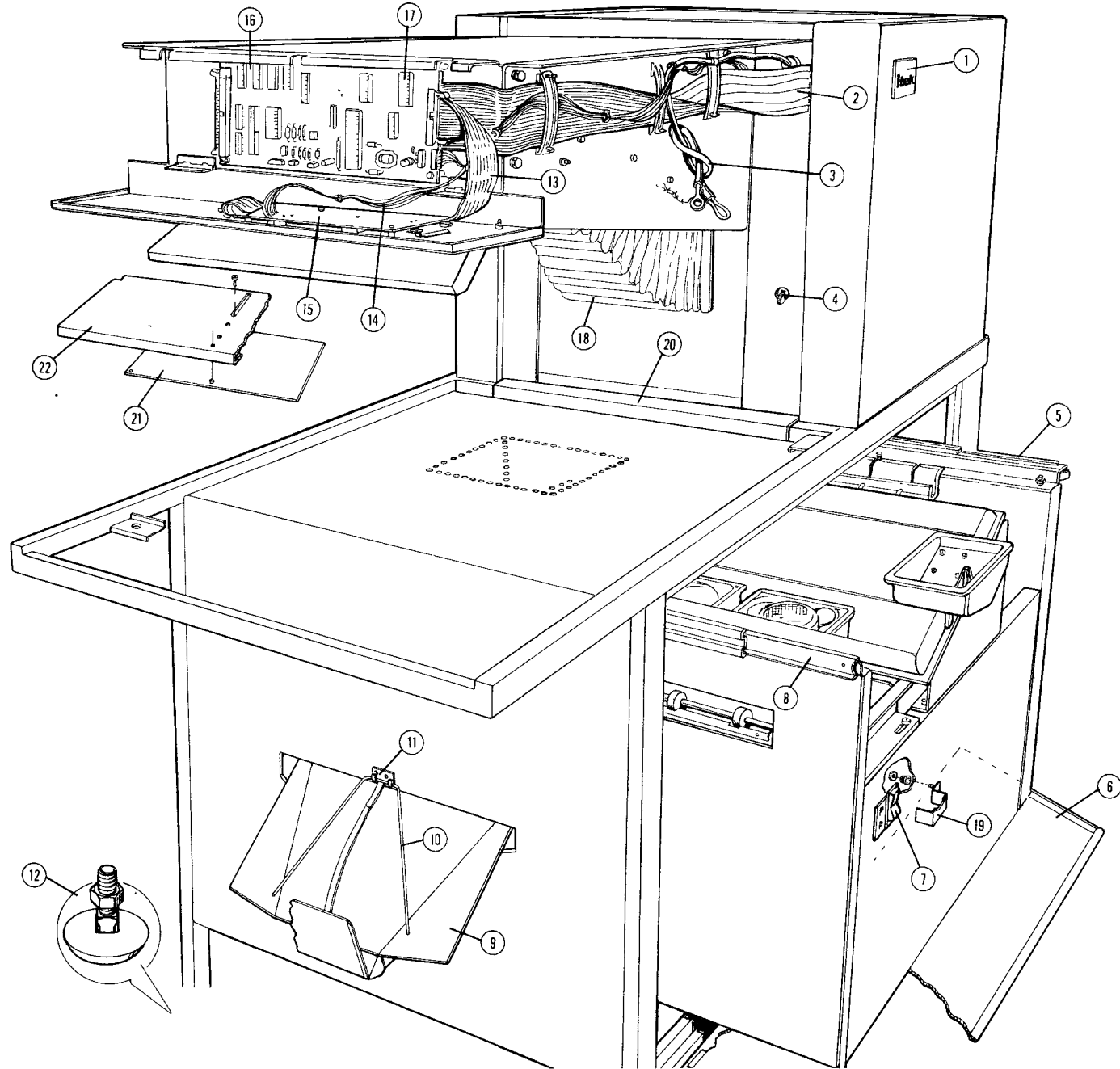
Technical & Parts  
Manual



0855

# **PARTS MANUAL**

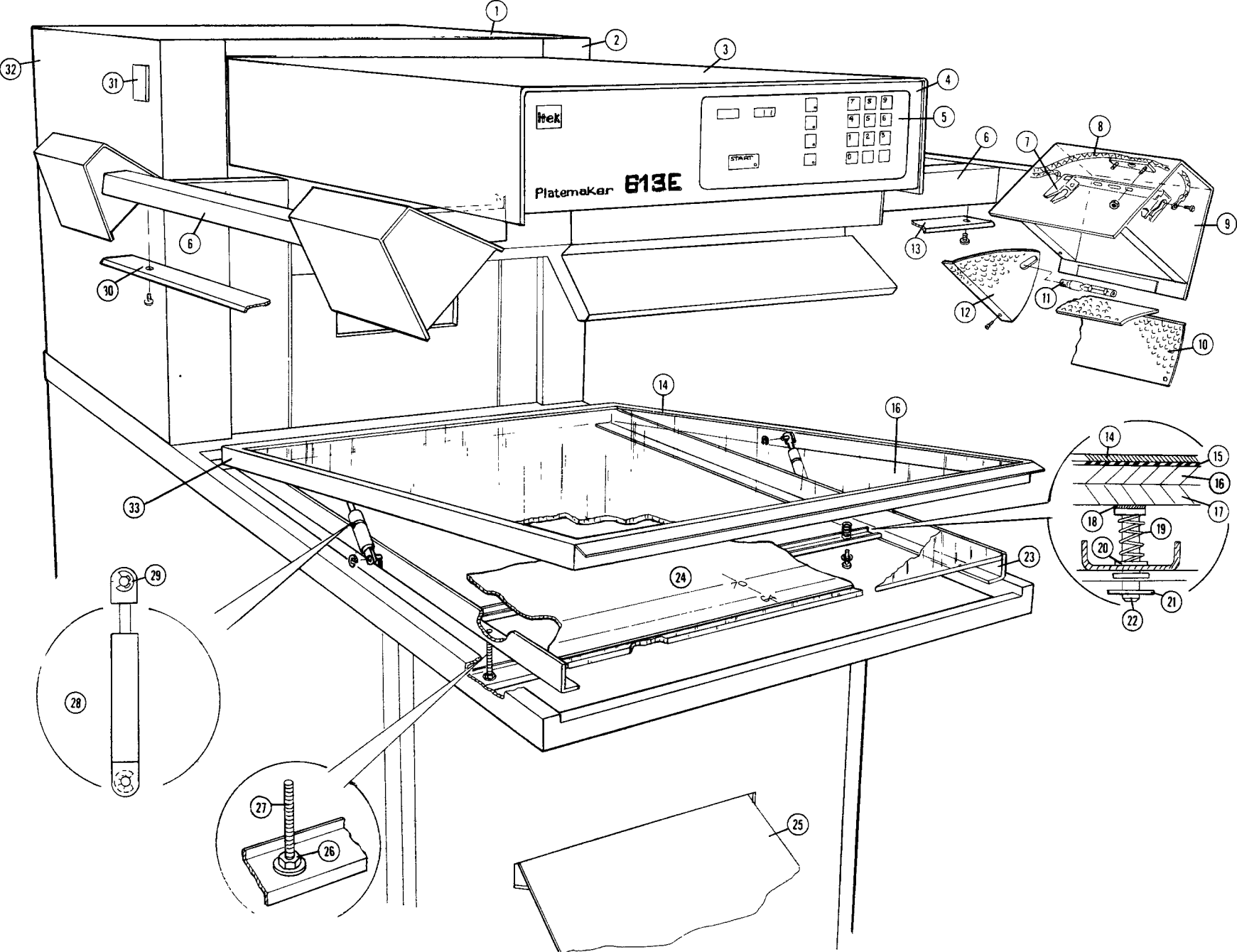
# OVERVIEW



# OVERHANG

REF.	DESCRIPTION	PART NO.	QTY.	AFTER S/N	USE P/N
1	Logo	19641701			
2	CPU board cable assy.	19972501			
3	Lamp cable - latch side	19973902			
NS	Lamp cable - hinge side	19973901			
4	Circuit breaker	09346500			
5	Slide - processor side	20084401			
6	Door assy	20043701			
	Hinge hook	20042701	2		
	Door drip pan	20188301			
7	Switch	09067801			
8	Slide - dryer side	20084501			
9	Stacker assy.	20075601			
10	Stacker guide assy.	20135901			
11	Hinge	19112501			
12	Foot	19604101	4		
13	Display board cable assy	19972401			
14	D.C power cable assy.	19972601			
15	Display P.C.B. assy.	20086701			
	Numerical Display	40124508			
16	Controller P.C.B. assy.	20161501			
17	Prom (U7)	20143801			
18	Bellows assy.	20069202			
19	Switch guard assy	20167901			
20	Angle assy.	20178601			
21	Mounting plate	20180101			
22	Light shield	20178401			
	Drip pan, front	20185701		7/86	20185702
	Drip pan, rear	20185801		7/86	20185802

LAMPARMS AND COPYBOARD ASSYS.

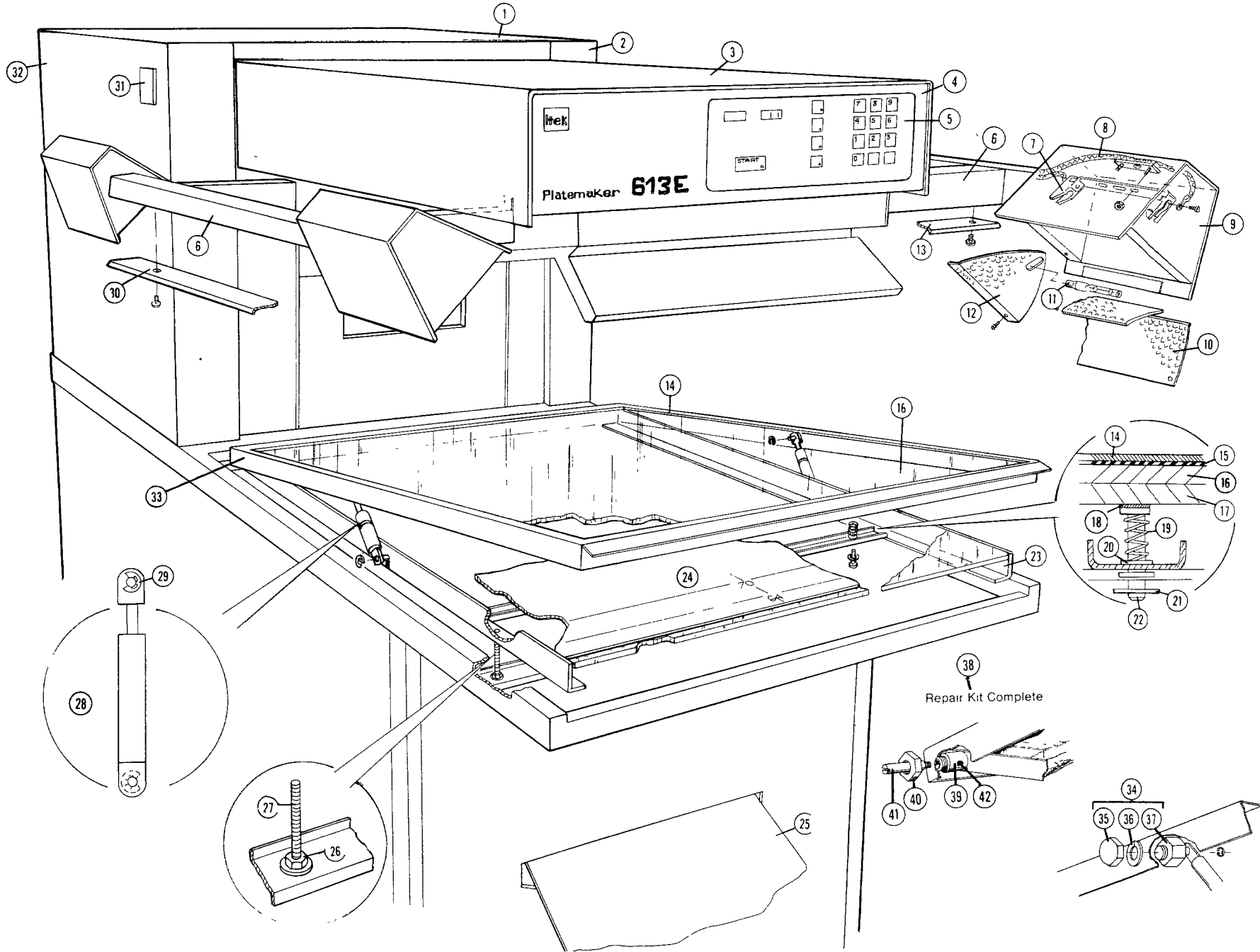


## LAMPARMS AND COPYBOARD ASSYS.

20111001 20154501

REF.	DESCRIPTION	PART NO.	QTY.	AFTER S/N	USE P/N
1	Top Cover	20047601			
2	Side cover (latch side)	20048001			
3	Overhang cover assy	20047701			
4	Control panel assy.	20082001			
5	Push button switch	20085001			
6	Lamp frame weld assy.	20107201	2		
7	Socket bracket assy	20131201			
8	Lamp socket wire	20131001			
9	Lamp shell assy. (P/O #6)	20107101			
10	Reflector	09190100			
	Machine screw 4-40 x 1/8"	H0030000			
11	Quartz lamp 500W	19068201			
12	Reflector end	09188700			
13	Cover	20105100	4		
	Machine screw 10-32 x 3/8"	H0465400			
	Lock washer	H0155200			
	Flat washer	H0156200			
14	Cover weldment assy.	20152401			
15	Tape	40151356			
16	Cover glass	20097701			
17	Platen glass	20097801			
18	Adhesive	40143535	A/R		
	Adhesive Activator	40143536	A/R		
19	Compression spring	20125901	4		
20	Nyliner	06754700	4		
21	Retaining ring	H0933100	8		

# LAMPARMS AND COPYBOARD ASSYS.



## LAMPARMS AND COPYBOARD ASSYS.

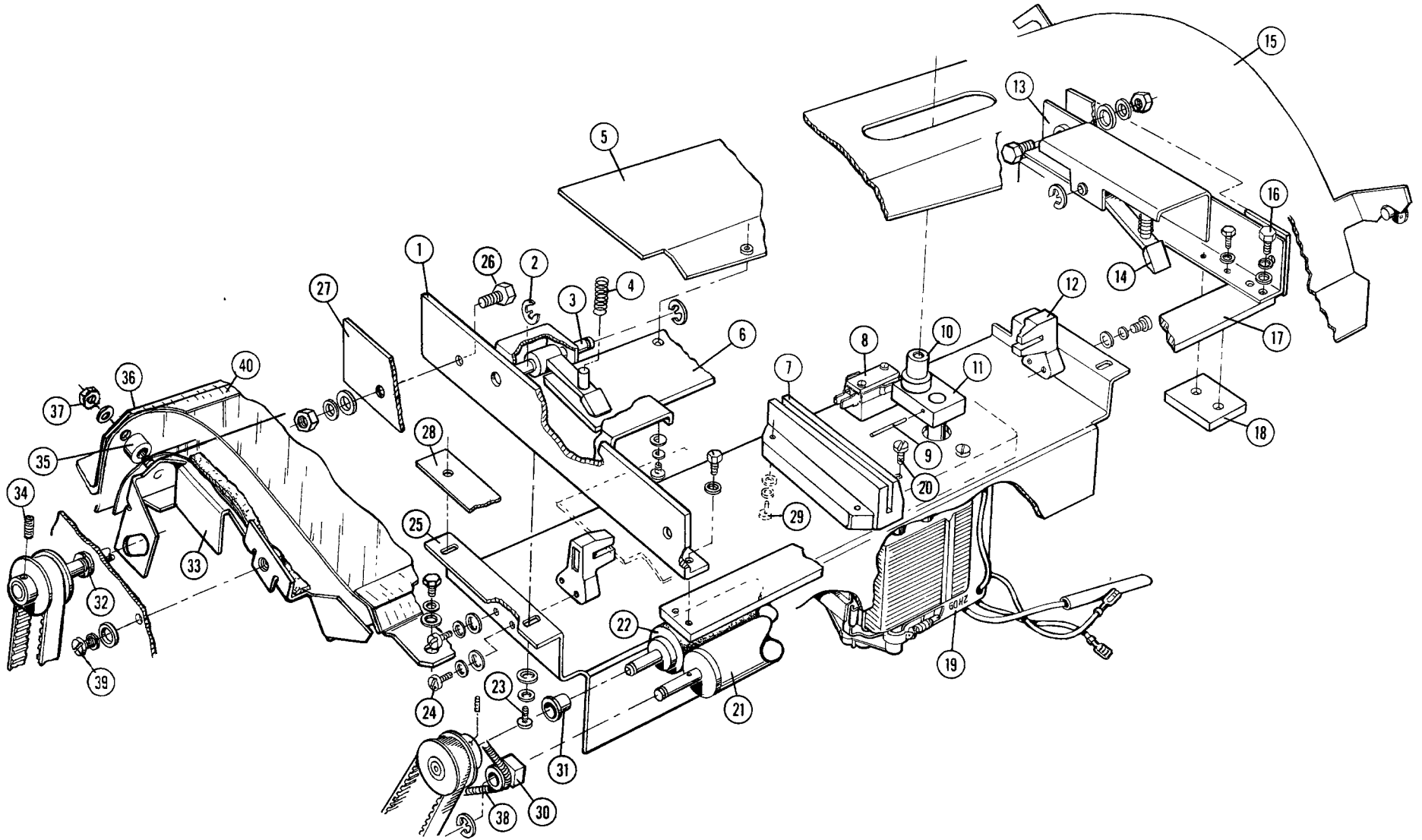
20111001

20154501

REF.	DESCRIPTION	PART NO.	QTY.	AFTER S/N	USE P/N
22	Platen stud	20422101	4		
23	Frame weldment assy.	20098901			
24	Chart (English/Metric)	20096501			
	Tape to affix chart	40151322			
25	Stacker assy.	20075601			
26	Nut	H0124200	8		
27	Stud	20097301	4		
28	Counter balance	20143401	2		
29	Retaining ring	H0933100	8		
30	Cover	20105600	2		
	Machine screw 10-32 x 3/8"	H0465400			
	Lock washer	H0155200			
	Flat washer	H0156200			
31	Logo	19641701			
32	Side cover (hinge side)	20070701			
	Door weldment assy. (rear)	20128601			
	Magnet, Latch	08974200	2		
33	Hinge pin	20153401	2		
	Set screw (hinge)	H0113400			
	Nyliner (hinge)	06754703	2		
	Pointed Baffle	20314001	4		
	(Service part only)				
34	Stud Repair Kit Complete	20431501	A/R		
35	Nut, 10-32 Cap	H0141000	A/R		
36	Lock Washer, #10	H0155200	A/R		
37	Pivot Stud	20431601	A/R		
38	Hinge repair kit complete	20447001	A/R		
39	Bearing	20446801	A/R		
40	Nut	H0127200	A/R		
41	Hinge pin	20446901	A/R		
42	Set screw	H0076400	A/R		



# KNIFE ASSEMBLY



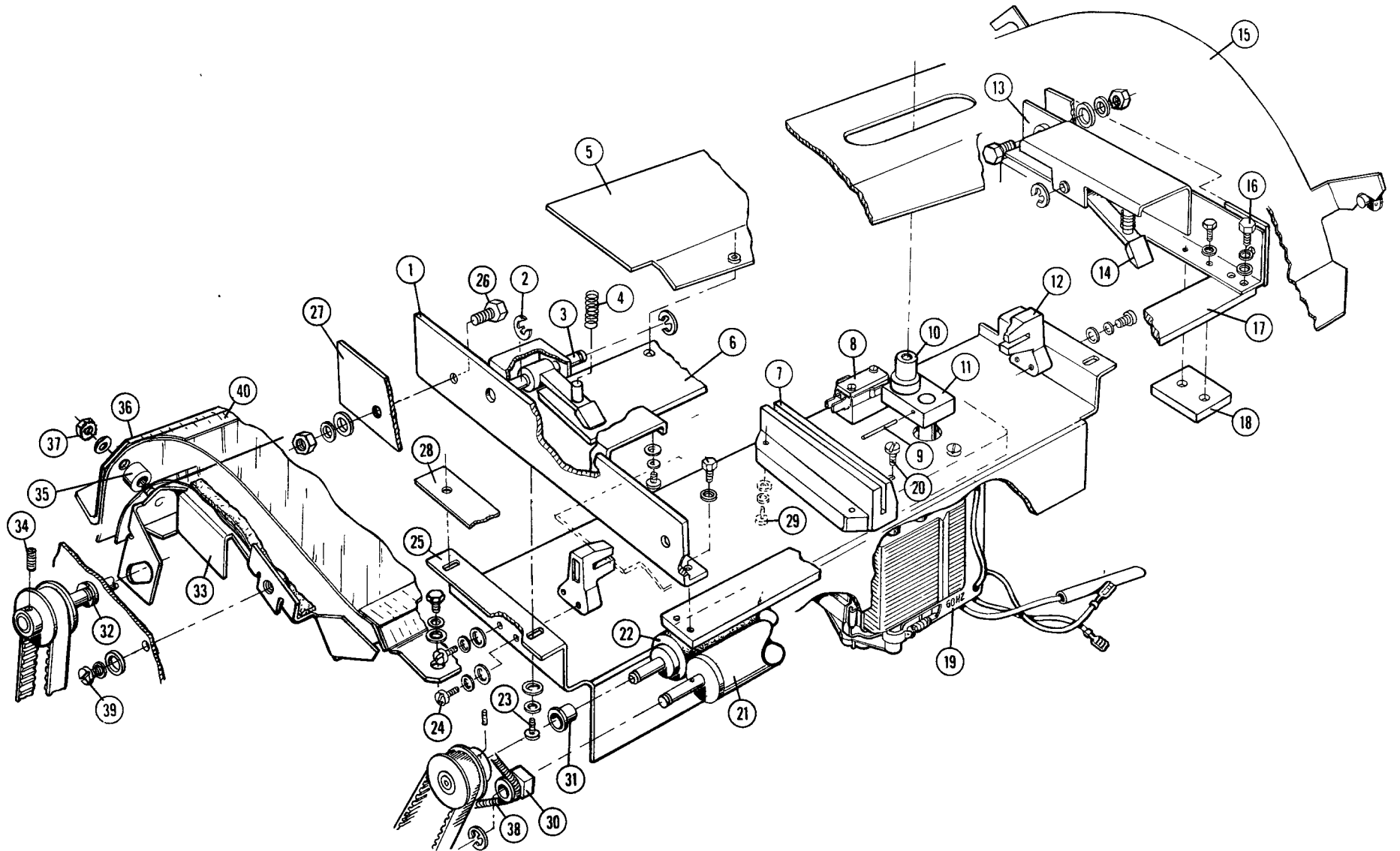
KNIFE ASSEMBLY

20202601

DOES NOT INCLUDE ITEMS #15, 21 or 22

REF.	DESCRIPTION	PART NO.	QTY.	AFTER S/N	USE P/N
1	Left support assy.	20160401			
2	Retaining ring	H0933100	4		
3	Pin	19578201	2		
4	Spring	09318900	2		
5	Plate assy.	20203101			
6	Moveable knife	20202801			
7	Guide block	20241001			
NS	Nut Plate	20241101			
8	Switch	01035702			
	Machine screw 4-40 x 3/4"	H0584100	2		
9	Spirol pin	H0509200			
10	Roller	20191401			
11	Pivot plate assy.	20074601			
12	Guide block	19594401	2		
13	Right support assy.	20202501			
14	Spring block	19594601	2		
15	Upper paper guide assy.	20207701			
NS	Lower paper guide assy.	20210601			
NS	Upper cage liner	20156301			
16	Machine screw 10-32 x 3/8"	H0480000	6		
	Flat washer	H0156200	6		
	Lock washer	H0155200	6		
17	Stationary knife	19881301			
18	Pad	20202901			
19	Knife motor	19322801			
20	Machine screw 8-32 x 3/8"	H0472100	10		
	Flat washer	H0156300			
	Lock washer	H0155100			

# KNIFE ASSEMBLY



# KNIFE ASSEMBLY

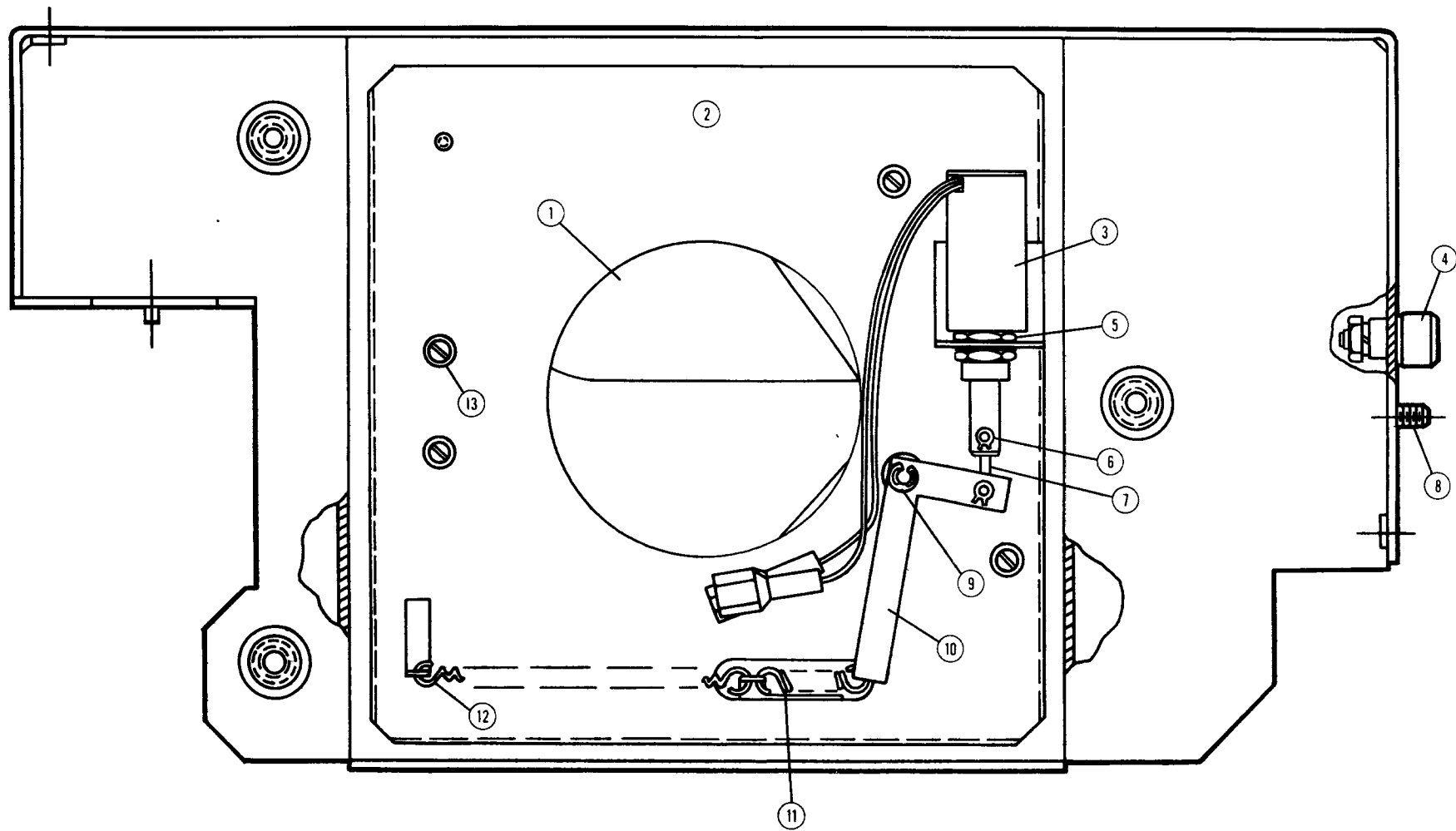
20202601

DOES NOT INCLUDE ITEMS #15, 21 or 22

REF.	DESCRIPTION	PART NO.	QTY.	AFTER S/N	USE P/N
21	Back up roller assy	20377201			
22	Paper drive roller	20083701			
23	Machine screw	H0296000	4		
	Flat washer	H0155100	4		
	Shoulder washer (fiber)	20161401	4		
	Lock washer	H0155100	4		
24	Machine screw 8-32 x 7/16"	H0029600	10		
	Flat washer	H0156300	10		
	Lock washer	H0155100	10		
25	Motor bracket	20074501			
26	Machine screw 8-32 x 7/16"	H0029600			
	Flat washer	H0156300			
	Lock washer	H0155100			
NS	Knife guard assy	20426601			
27	Knife insulator	20160601	2		
28	Knife insulator	20160701			
NS	Knife insulator	20160801			
NS	Step washer insulator	20161301	8		
29	Screw	H0472300			
30	Bearing	01371601	2		
31	Bearing	09258201	2		
32	Bearing	20177901	2		
33	Lower paper guide				20303001
34	Set screw	H0113400	4		
35	Spacer		2		40150178
36	Top guide assembly				20302201
37	Nut		2		H0144200
	Washer, lock		2		H0155100
	Washer, flat		2		H0156300
38	Spring	20177701	2		
39	Bolt 1/4-20	H0065800	2		
	Washer, lock	H0155300	2		
	Washer, flat	H0156200	2		

Items #33 & #36 assembled - 20250901

12  
LENS CARRIER ASSEMBLY

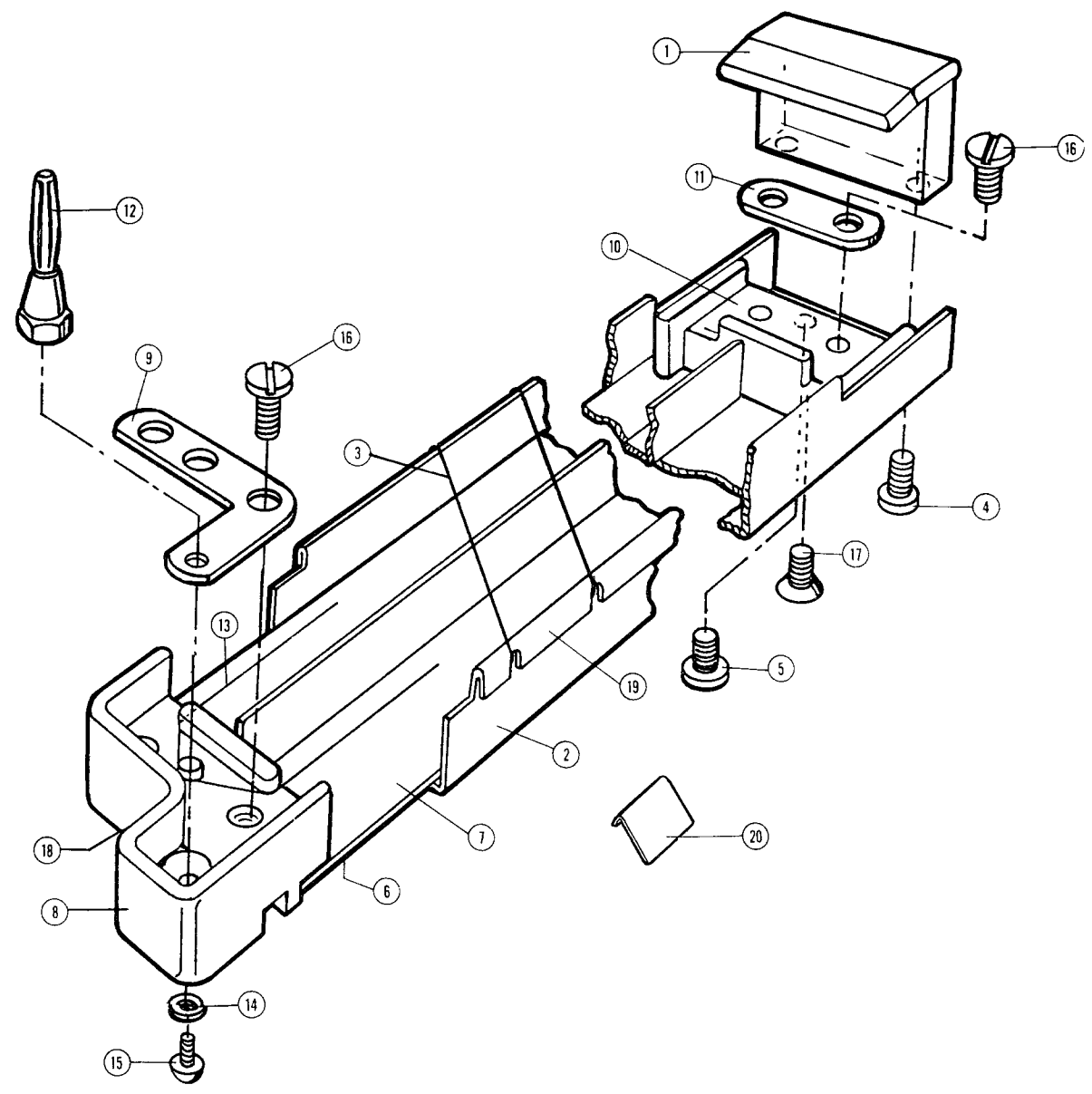


**LENS CARRIER ASSEMBLY**

20114101

REF.	DESCRIPTION	PART NO.	QTY.	AFTER S/N	USE P/N
1	Shutter assy.	19633301			
2	Shutter plate weld. assy.	20100101			
3	Solenoid assy.	20135101			
4	Cam follower	09352900			
	Spacer	03658700			
	Lock washer	H0155200			
	Hex nut	H0144400			
5	Hex nut	H0136100			
6	Retaining ring	H0930700	2		
7	Link	19862801			
8	Cap screw	H0273200			
9	Retaining ring	H0932900			
10	Shutter link	19255801			
11	Spring extension	19255401			
12	Spring extension	19255501			
13	Machine screw 4-40 x 1/4"	H0586100	4		
	Lock washer	H0155700	4		

# NEGATIVE CORONA , ) EMBLY COMPLETE



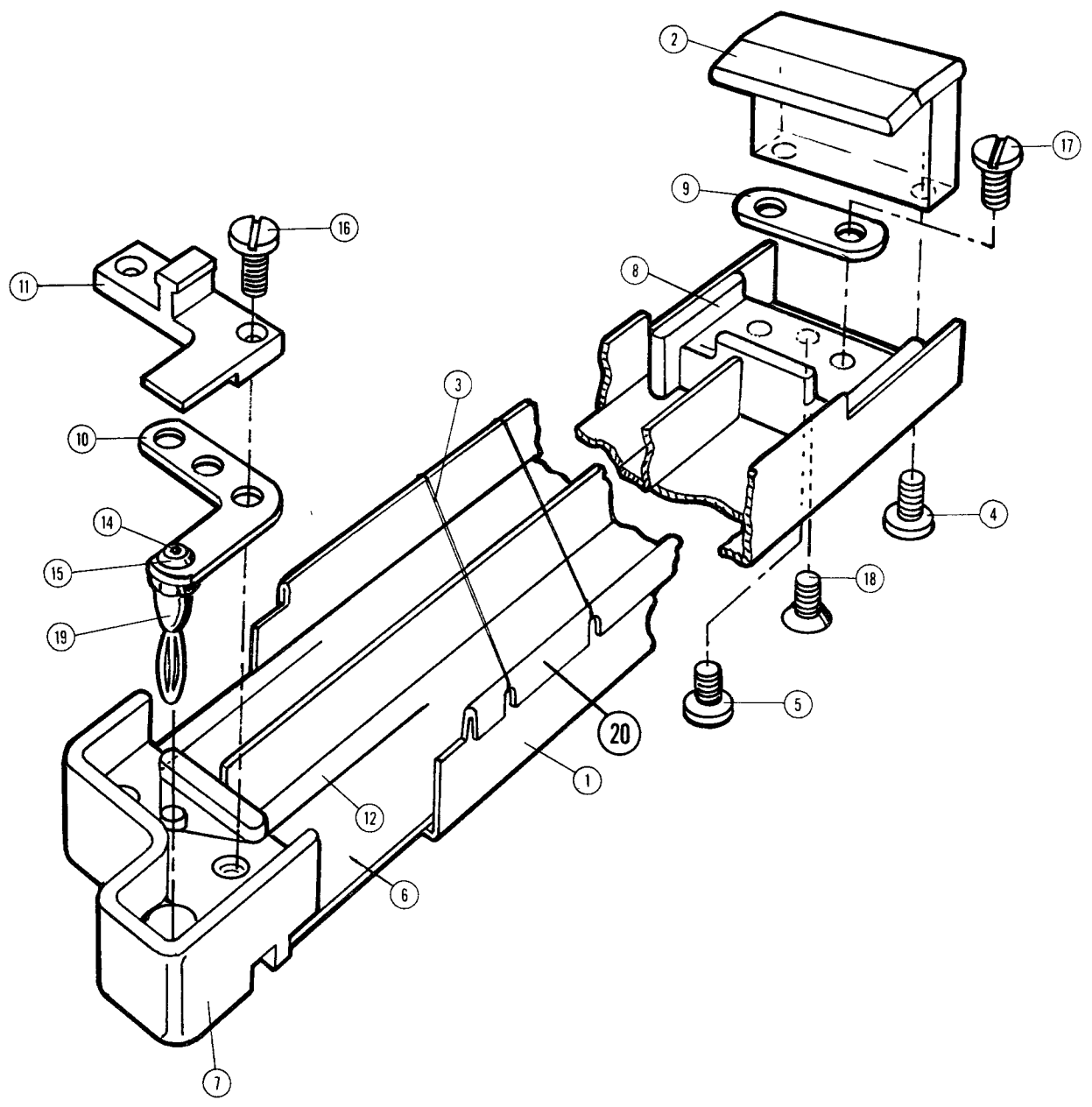
## NEGATIVE CORONA ASSEMBLY COMPLETE

20205901

<u>REF.</u>	<u>DESCRIPTION</u>	<u>PART NO.</u>	<u>QTY.</u>	<u>AFTER S/N</u>	<u>USE P/N</u>
1	Locating block	19089101			
2	Channel	20206101			
3	Monofilament 4# test	01384801			
4	Screw	H0682200	2		
5	Screw	H0682300	2		
6	Label	01387501			
7	Shield	20206301			
8	Terminal block	19089301			
9	Terminal plate	19088901			
10	Insulation block	19089401			
11	Washer	19089001			
12	Plug	01365501			
13	Corona wire	19089701			
14	Washer	H0155000			
15	Screw	H0319900			
16	Screw	H0682300	2		
17	Screw	H0682400	5		
18	Shoulder screw	19088701			
19	Grommet	06772901	3		
	Grommet	06772906	3		
20	Tab	20145901	2		
	Tab Support	20271101	1		
	Adhesive	H0885500	A/R		



POSITIVE CORONA ASSEM. COMPLETE

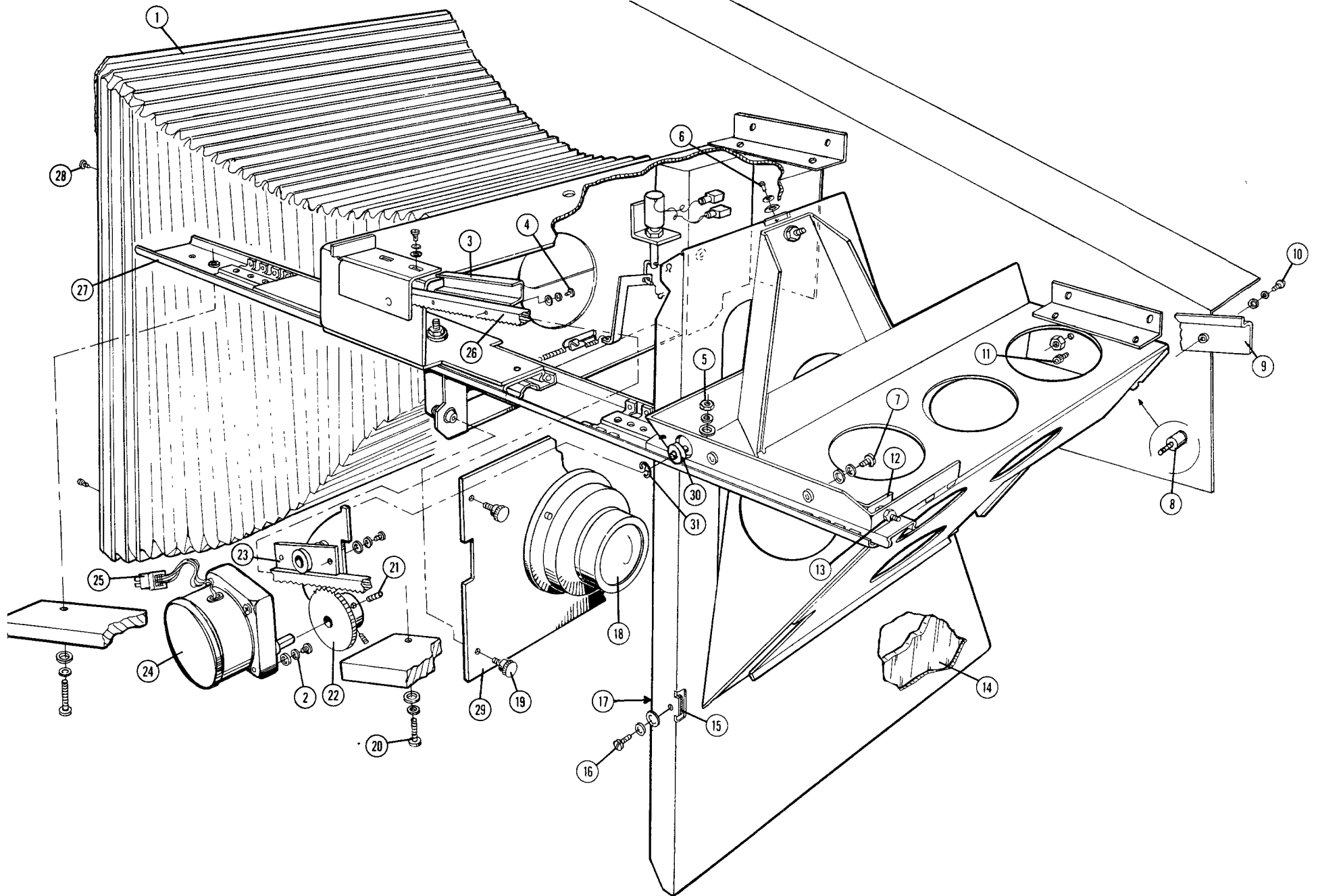


POSITIVE CORONA ASSEMBLY COMPLETE

20290501

REF.	DESCRIPTION	PART NO.	QTY.	AFTER S/N	USE P/N
1	Channel	20277301			
2	Locating block	19089101			
3	Monofilament - 4# test	01384801			
4	Screw	H0682200			
5	Screw	H0682300			
6	Shield	20076601			
7	Terminal block	19089301			
8	Insulation block	19089401			
9	Washer	19089001			
10	Terminal plate	19088901			
11	Finger grip	19088601			
12	Corona wire	19089701			
NS	Shoulder screw	19088701			
14	Screw	H0319900			
15	Washer	H0155000			
16	Screw	H0682100			
17	Screw	H0682300			
18	Screw	H0682400			
19	Plug	01365501	3		
20	Grommet	06772901	2		
	Grommet	06772906	2		

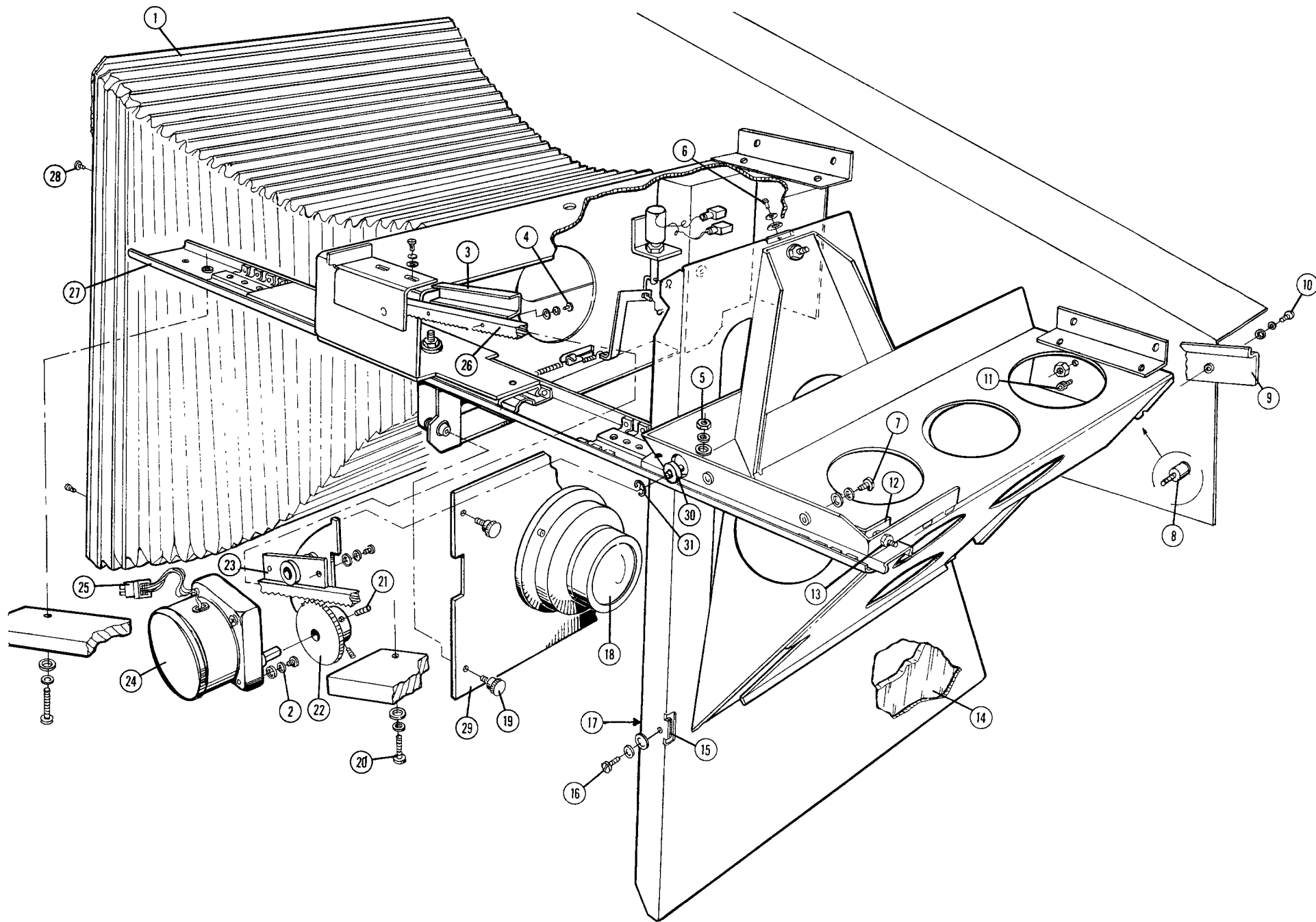
# OPTICS ASSEMBLY



# OPTICS ASSEMBLY

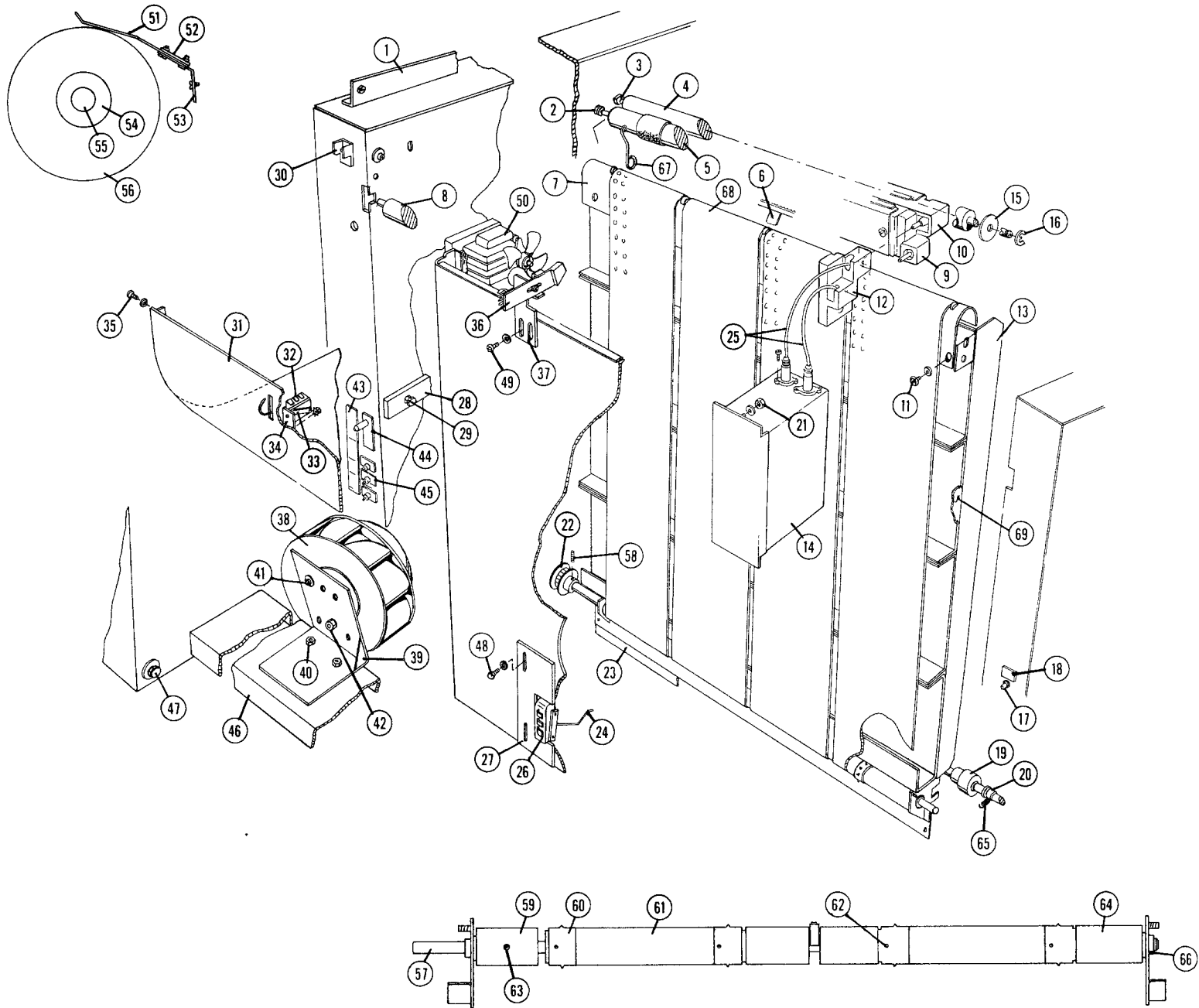
REF.	DESCRIPTION	PART NO.	QTY.	AFTER S/N	USE P/N
1	Bellows assy.	20069202			
2	Machine screw 8-32 x 3/8"	H0472100			
	Flat washer	H0156300			
	Lock washer	H0155100			
3	Switch actuator, 100%	20110001			
4	Machine screw 8-32 x 1/4"	H0471900			
	Lock washer	H0155200			
	Flat washer	H0156300			
5	Hex nut 10-32	H0144400			
	Flat washer	H0156200			
	Lock washer	H0155200			
6	Machine screw 8-32 x 1/4"	H0471900			
	Lock washer	H0155100			
	Flat washer	H0156300			
7	Machine screw 10-32 x 3/8"	H0465400			
	Lock washer	H0155200			
	Flat washer	H0190200			
8	Cam follower	09352900			
	Spacer	03658700			
	Lock washer	H0155200			
	Hex nut 10-32	H0144400			
9	Guide rail assy.	20112102			
10	Machine screw 10-32 x 3/8"	H0465400			
	Lock washer	H0155200			
	Flat washer	H0156200			
11	Cap screw 10-32 x 3/8"	H0273200			
12	Cam follower bracket assy.	20192101			
13	Hex nut 10-32	H0144400			

20  
OPTICS ASSEMBLY



## OPTICS ASSEMBLY

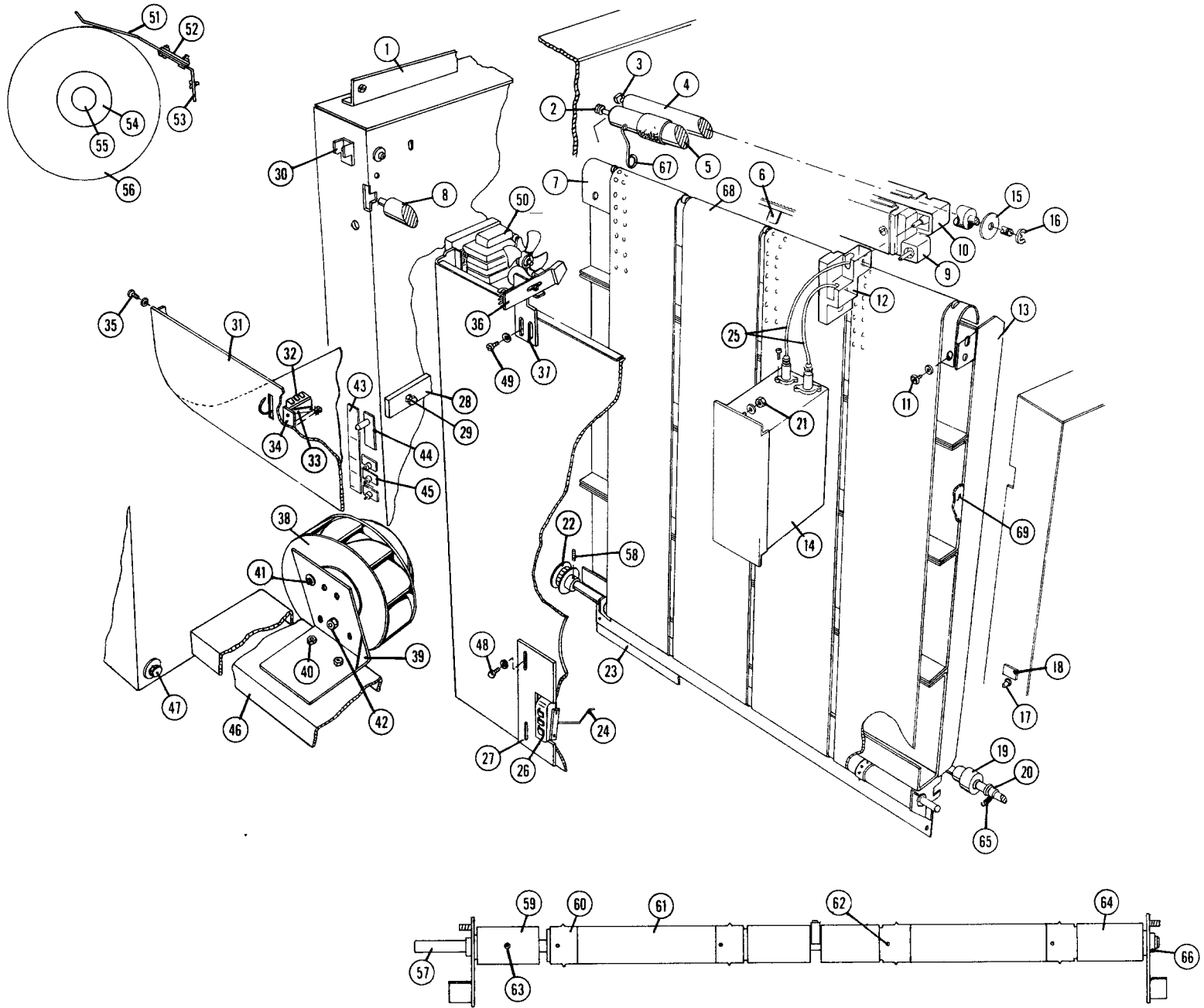
REF.	DESCRIPTION	PART NO.	QTY.	AFTER S/N	USE P/N
14	Mirror	20084101			
15	Tape (cork pad)	PL841900			
16	Machine screw 8-32 x 1/4"	H0471900			
	Lock washer	H0155100			
	Flat washer	H0156300			
17	Mirror clip assy	20118301			
18	Lens	20123301			
19	Allen screw	H0273200			
20	Machine screw 10-32 x 1"	H0065700			
	Lock washer	H0155200			
	Flat washer	H0156200			
21	Set screw 10-32 x 3/8"	H0116400			
22	Mirror cam assy.	20110301			
23	Hold down assy.	20109701			
24	Stepper motor assy	20093301			
25	Connector - plug	40132905			
26	Gear rack	20083101			
27	Ball slide assy.	20110101			
28	Machine screw 6-32 x 1/4"	H0470100			
NS	Transmissive sensor	20065201			
29	Lens plate	20384901			
30	Bushing	09258004			
31	E-Ring	H0927200			



# FOCAL PLANE

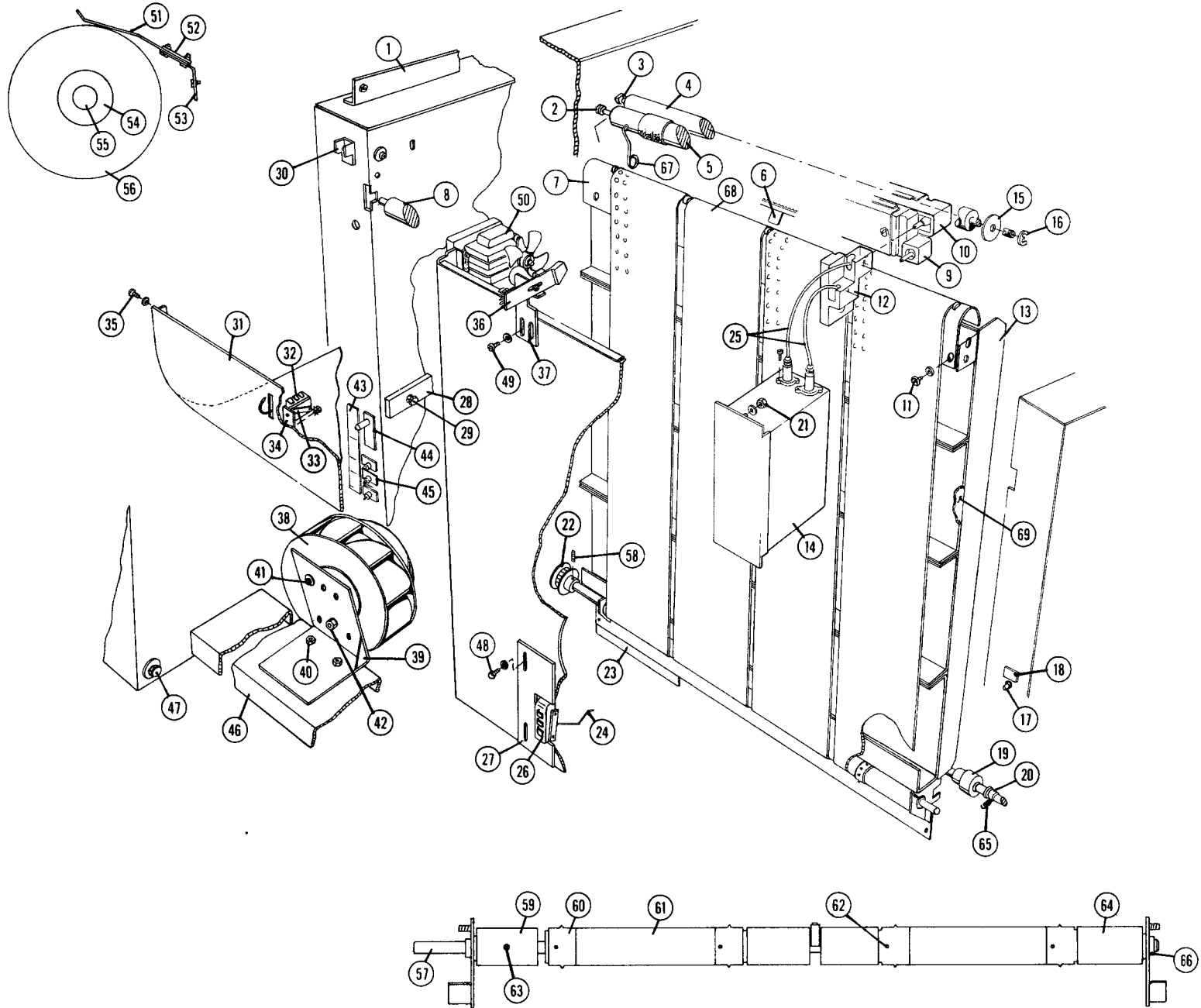
REF.	DESCRIPTION	PART NO.	QTY.	REF.	DESCRIPTION	PART NO.	QTY.
1	Angle Bracket	20047101	1	19	Roller & Shaft Assy Comp	20270201	1
2	Bearing	20177901	2		Roller Only	20157901	2
3	Bearing	01371601	2		E-Ring	H0933100	2
4	Input Roller	20311601	1	20	Retaining Ring	H0929000	2
5	Input Roller	20082901	1	21	Bearing	01371601	2
6	Tab	20145901	2		Screw, 1/4-20 x 1/2	H0477800	2
7	Upper Belt Guide	20276801	1		Flat Washer, 1/4	H0156200	2
8	Backup Roller	20376901	1	22	Lock Washer, 1/4	H0155300	2
9	Corona, Positive	20290501	1	23	Nut, 1/4-20	H0144300	2
10	Corona, Negative	20205901	1		Pulley	20096101	1
11	Screw, 10-32 x 3/8	H0465400	2		Input Guide	20269901	1
	Lock Washer, #10	H0155200	2		Washer, Special	19341401	2
	Flat Washer, #10	H0156000	2	24	Washer, Special	20146301	2
12	Terminal Block	19089201	1		Nut, 6-32	H0904000	2
	Screw, 1/4-20 x 1/2	H0468300	2	25	Actuator	20150001	1
	Lock Washer, 1/4	H0155300	2		Sleeving	E0189000	A/R
	Screw, 6-32 x 3/8	H0065400	2	26	High Voltage Connector	01358902	1
	Lock Washer, #6	H0158300	2	27	Terminal	01365401	2
13	Platen Assembly Complete	20276701	1		Switch	19285001	1
	Screw, 10-32 x 3/8	H0465400	4		Switch Bracket	20273501	1
	Flat Washer, #10	H0156000	4		Screw, 4-40 x 3/4	H0584100	2
	Lock Washer, #10	H0155200	4		Flat Washer, #4	H0156500	2
14	Power Supply, 50/60 Hz	20345701	1	28	Lock Washer, #4	H0155700	2
15	Washer, Plastic	40152478	2	29	Paper Roll Bearing	20292301	4
16	"E" Ring	H0933100	2		Screw, 8-32 x 5/8	H0472300	2
17	Switch	20355301	1	30	Flat Washer, #8	H0156300	2
18	Label	20142601	1		Lock Washer, #8	H0155100	2
					Switch, Interlock	20286901	1
					Cheater Switch	20323301	A/R





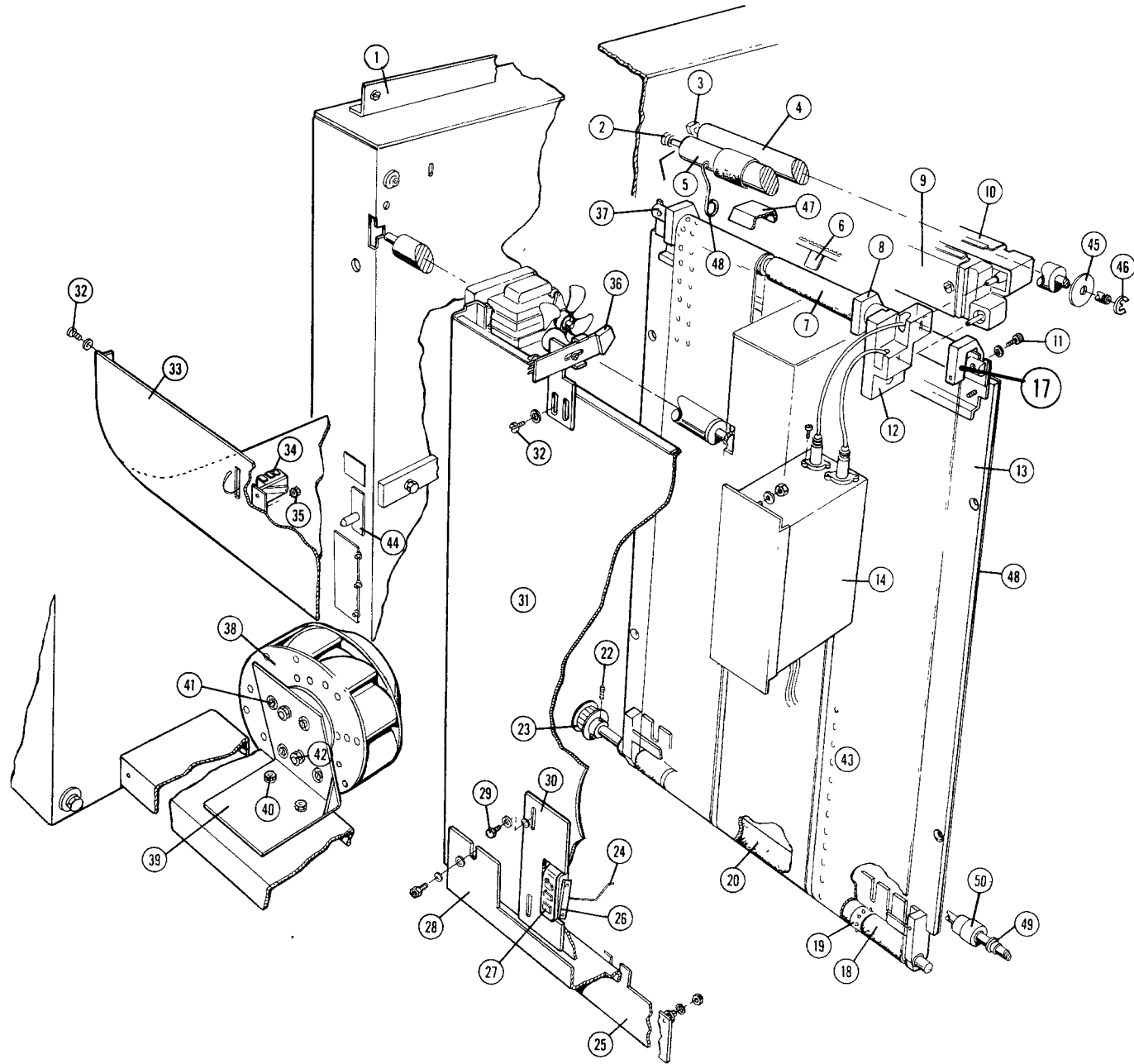
# FOCAL PLANE

REF.	DESCRIPTION	PART NO.	QTY.	REF.	DESCRIPTION	PART NO.	QTY.
31	Upper Guide & Switch Only	20109301	1	43	Label	20202301	1
32	Switch	19285001	1	44	Switch	20128501	1
33	Actuator	40140302	1	45	Circuit Breaker	40121703	3
	Nut Plate	19066001	1				
34	Screw, 4-40 x 3/4	H0584100	2	46	Rear Tie Bar	20095301	1
	Flat Washer, #4	H0156500	2				
	Lock Washer, #4	H0155700	2				
	Switch Bracket	20106901	1				
35	Nut, 6-32	H0144100	2	47	Screw, 1/4-20 x 1/2	H0477800	4
	Lock Washer, #6	H0155000	2				
	Flat Washer, #6	H0156400	2				
	Lock Washer, #8	H0155100	4				
36	Screw, 8-32 x 3/8	H0472100	4	48	Screw, 8-32 x 3/8	H0472100	2
	Lock Washer, #8	H0155100	4				
37	Reflective Sensor Assy.	20378501	1	49	Screw, 10-32 x 3/8	H0465400	2
	Screw, 4-40 x 5/16	H0685200	1				
	Nut, 4-40	H0144500	1				
	Lock Washer, #4	H0155700	1				
	Flat Washer, #4	H0156500	1				
38	Sensor Bracket	20127201	1	50	Motor	09096201	2
	Screw, 10-32 x 3/8	H0465400	2				
	Flat Washer, #10	H0156000	2				
	Lock Washer, #10	H0155200	2				
39	Centrifugal Blower	20093401	1	51	Spring	19069701	2
	Blower Plate	20130401	2				
40	Blower Mount	20130301	1	52	Plate Assembly	19069801	2
41	Screw, 1/4-20 x 1/2	H0477800	2				
	Flat Washer, 1/4	H0156200	2				
	Lock Washer, 1/4	H0155300	2				
42	Screw, M4 x 10 Metric	H0725000	4	53	Paper Tension Bracket	20095201	1
	Flat Washer, #8	H0156300	4				
43	Lock Washer, #8	H0155100	4	54	Screw, 8-32 x 3/8	H0472100	2
	Nut, 1/4-20	H0144300	2				
44	Flat Washer, 1/4	H0156200	2	55	Lock Washer, #8	H0155100	2
	Lock Washer, 1/4	H0155300	2				
	Spool Shaft	20217601	1				
45	Screw, Shaft End	H0682200	1	56	Nut, 8-32	H0144200	1
	Nut, 8-32	H0144200	1				
46	Spool End	19162201	2	57	Shaft, Platen Roller	20273601	1
	Shaft, Platen Roller	20273601	1				
47	Pin, 3/32 x 5/8	H0507700	1	58	Roller Segment, Adjust.	20273401	1
	Roller Segment, Adjust.	20273401	1				



## FOCAL PLANE

REF.	DESCRIPTION	PART NO.	QTY.
60	Sprocket	20180901	3
61	Roller Segment	20203201	2
62	Pin, 3/32 x 7/8	H0513700	3
63	Set Screw, 10-32 x 1/4	H0692800	3
64	Roller Segment	20270001	1
65	Spring	09572400	2
66	Bearing	09258014	2
67	Spring	01371502	2
	Screw, 8-32 x 7/16	H0029600	2
	Nut, 8-32	H0144200	2
	Lock Washer, #8	H0155100	2
68	Belt	20168101	3
69	Platen Overlay	20270301	1

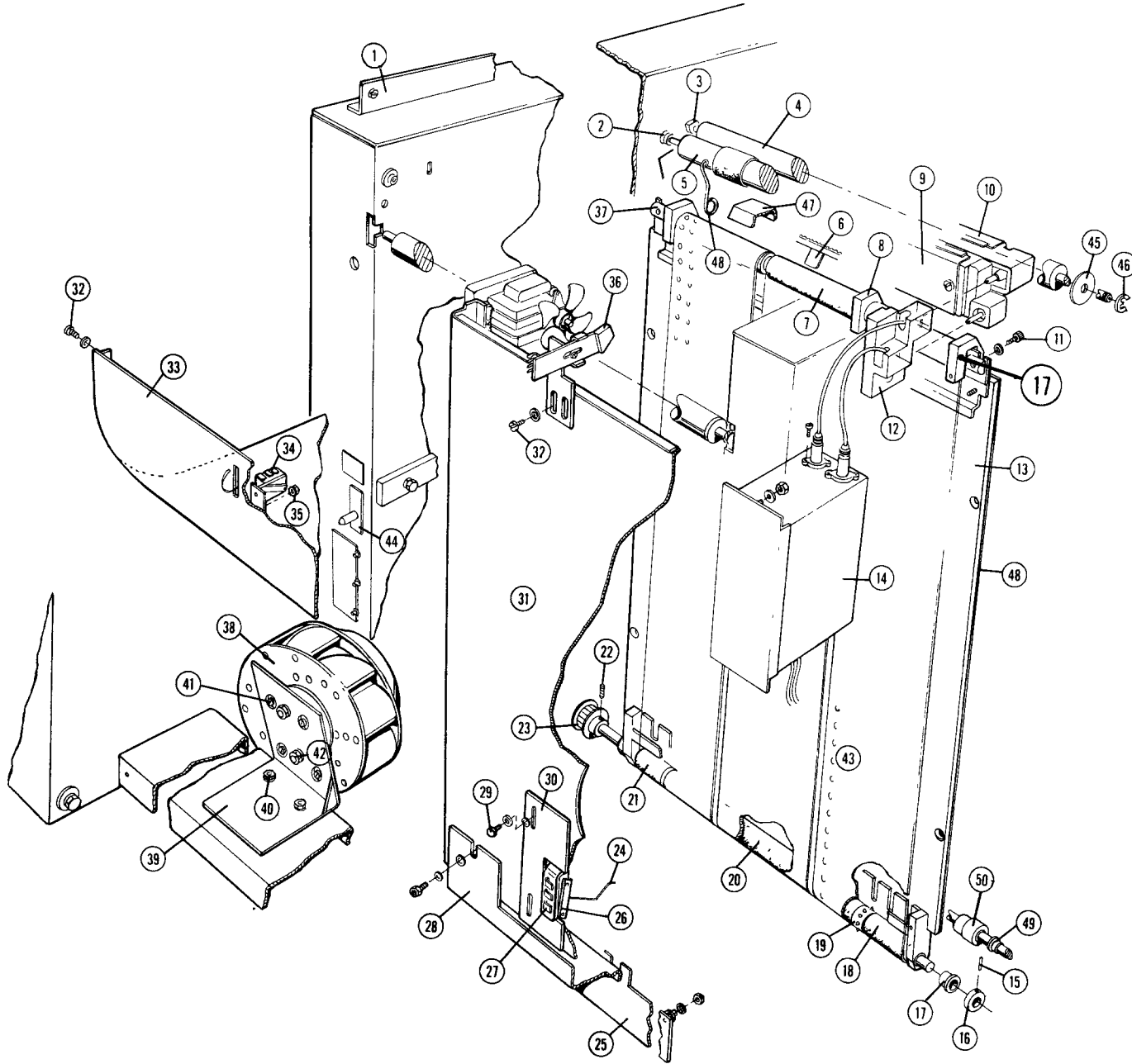


# FOCAL PLANE

REF.	DESCRIPTION	PART NO.	QTY.	AFTER S/N	USE P/N
1	Machine screw 8-32 x 3/8"	H0472100	6		
2	Bearing	20177901	2		
3	Bearing	40152478	2		
4	Corona input roller	20083401			
5	Corona input roller	20082901			
6	Tab	20145901	2		
7	Idler assy.	20161901	3		
8	Spacer	20136001	1		
	Spirol pin	H0513700			
	Spacer	19392001			
	Machine screw 4-40 x 1"	H0683100	3		
9	Corona-positive	20206001			
10	Corona-negative	20205901			
11	Cap screw 10-32 x 1/2"	H0271900	2		
	Flat washer	H0156900	2		
12	Terminal block	19089201			
13	Platen assy.	20200401			
14	Corona power supply 50/60 Hz	20345701			
17	Top roller bracket	20127401			
18	Roller	20199801	2		
19	Sprocket	20180901	3		
20	Roller	20203201	2		
	Set screw	H0513700	4		
22	Set screw 8-32 x 1/4"	H0113400			
23	Pulley	20096101			
NS	E-Ring	H0933000	2		

# FOCAL PLANE

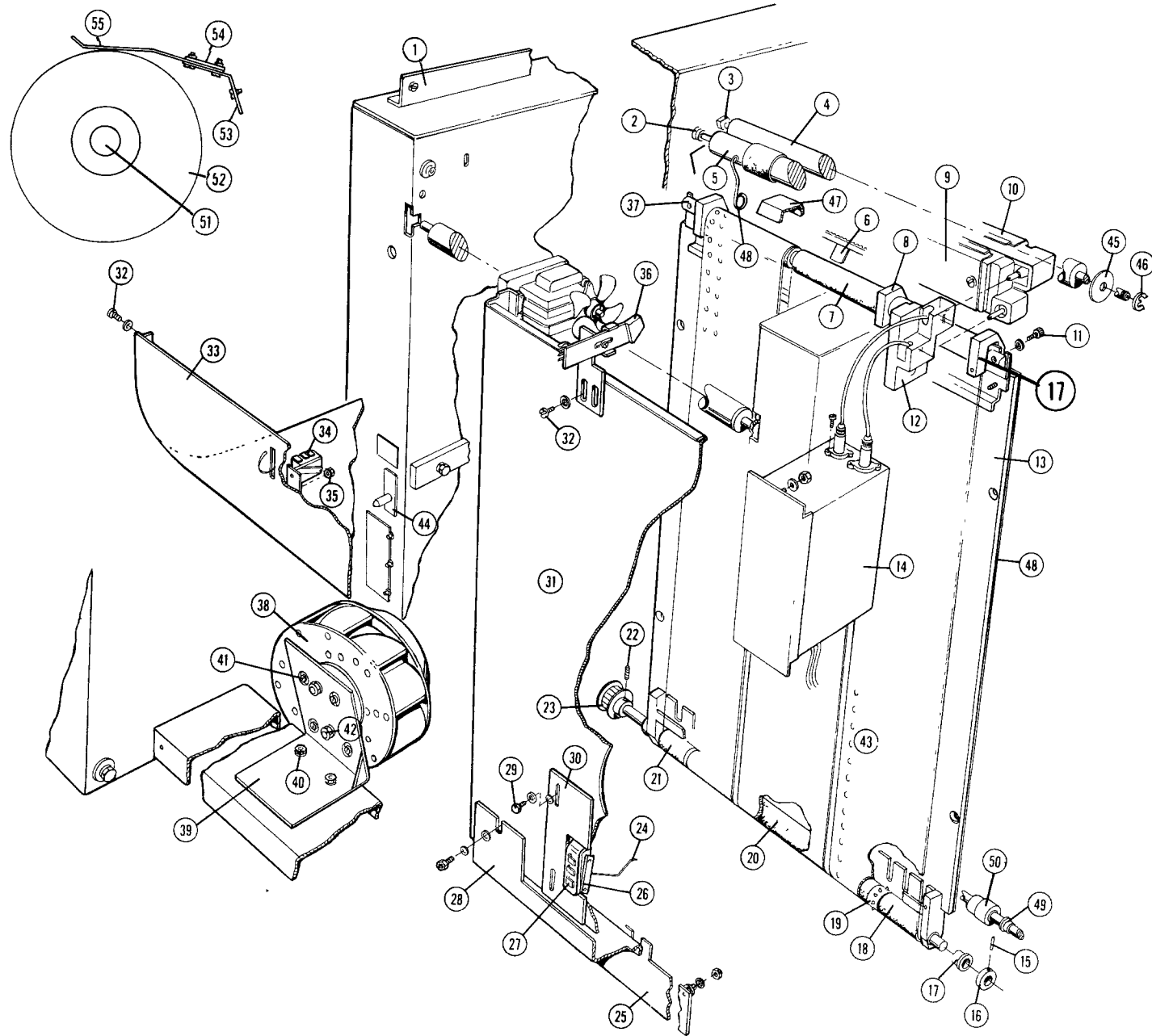
Serial # 866 and below



# FOCAL PLANE

REF.	DESCRIPTION	PART NO.	QTY.	AFTER S/N	USE P/N
24	Actuator	20150001			
	Sleeving	E0189000			
25	Input guide	20207801			
26	Nut plate	08949300			
27	Switch	19285001			
28	Paper guide bracket assy.	20217701			
29	Machine screw 10-32 x 3/8"	H0480000	2		
	Flat washer	H0156000	2		
	Lock washer	H0155200	2		
30	End sense switch assy.	20101301			
31	Vacuum back weld. assy.	20109201			
32	Machine screw 10-32 x 3/8"	H0465400	4		
	Flat washer	H0156000	4		
	Lock washer	H0155200	4		
33	Paper guide assy.	20095101			
34	Switch	19726501			
35	Hex nut 6-32	H0144100	2		
	Lock washer	H0155000	2		
	Flat washer	H0156400	2		
36	Reflective sensor PCB assy.	20378501			
37	Belt shaft	20109401			
38	Centrifugal blower assy.	20093401			
39	Blower mount	20130301			
40	Cap screw 1/4-20 x 3/8"	H0068500			
	Flat washer	H0156200			
	Lock washer	H0155300			
41	Machine screw 4-40 x 1/4"	H0586000			
	Flat washer	H0156300			
	Lock washer	H0155100			
42	Lock washer	H0155300			
	Flat washer	H0156200			
	Nex nut 1/4 - 10	H0144300			
43	Transport belt (set)	19368801			
44	Knife interlock sw	20128501			
NS	Suppressor assy.	20156901			

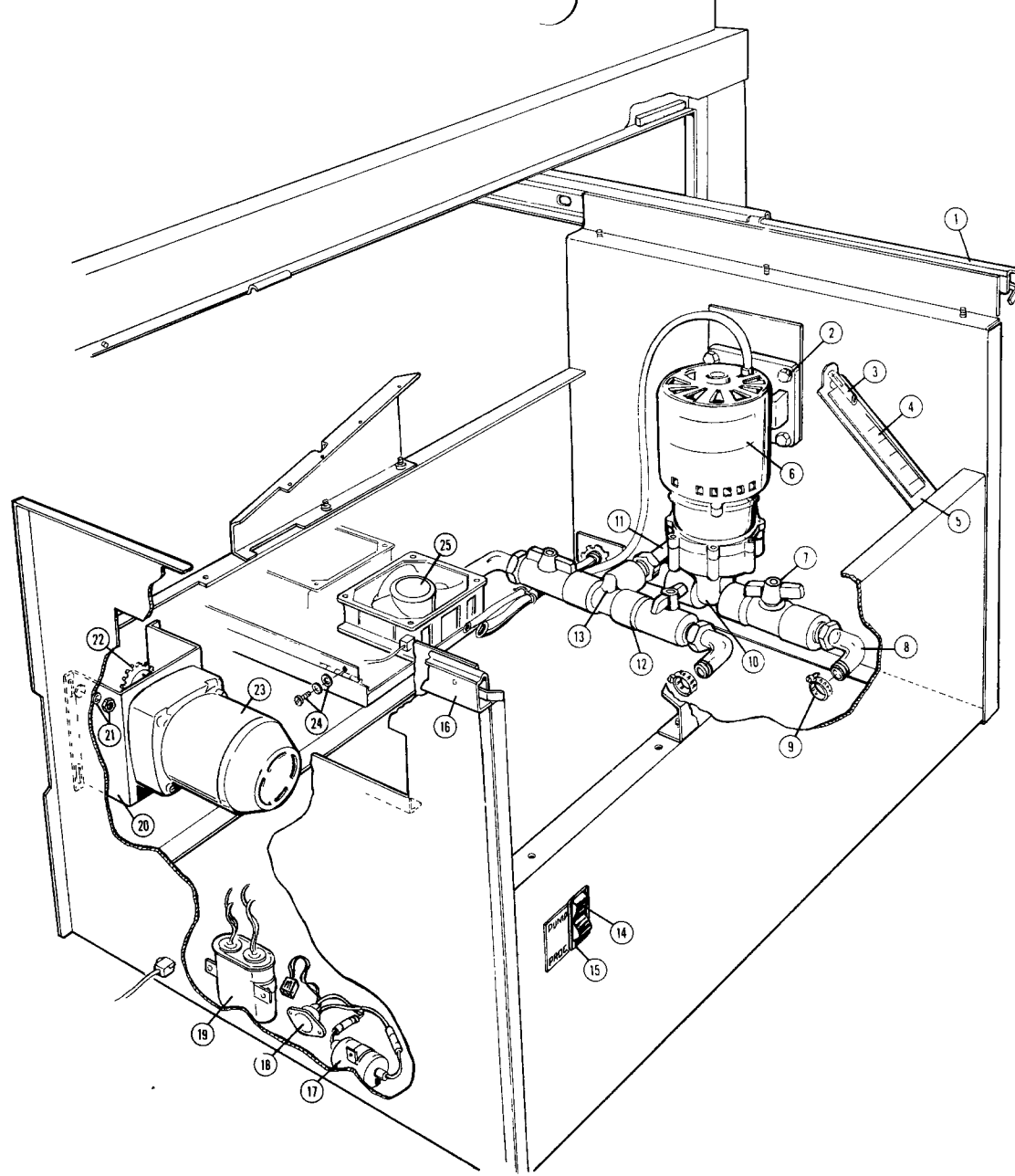




# FOCAL PLANE

REF.	DESCRIPTION	PART NO.	QTY.	AFTER S/N	USE P/N
45	Washer, plastic	40152478	2		
46	"E" ring	H0933100	2		
47	Corona output guide	20162901			
48	Platen overlay	20200501			
49	Bearing	01371600	2		
50	Platen roller assy.	20163401			
	a. Spring	09572400	2		
	b. Bracket r.h.	20162401			
	c. Bracket l.h.	20162501			
	d. "E" ring	H0933100	2		
	e. Grip ring	H0929000	2		
	f. Roller	20157901	2		
	g. Pin	H0507700	2		
51	Spool shaft	20217601			
52	Spool end	19162201	2		
	Spool nut	19162901			
53	Bracket	20095201	1		
	Screw, 10-32 x 3/8	H0480000	2		
	Lock washer, #10	H0155200	2		
54	Nut plate	19069801	2		
	Screw, 8-32 x 5/16	H0586000	4		
	Lock washer, #8	H0155100	4		
55	Brake pad	19069701	2		

# PROCESSOR/DISPENSER ASSEMBLY

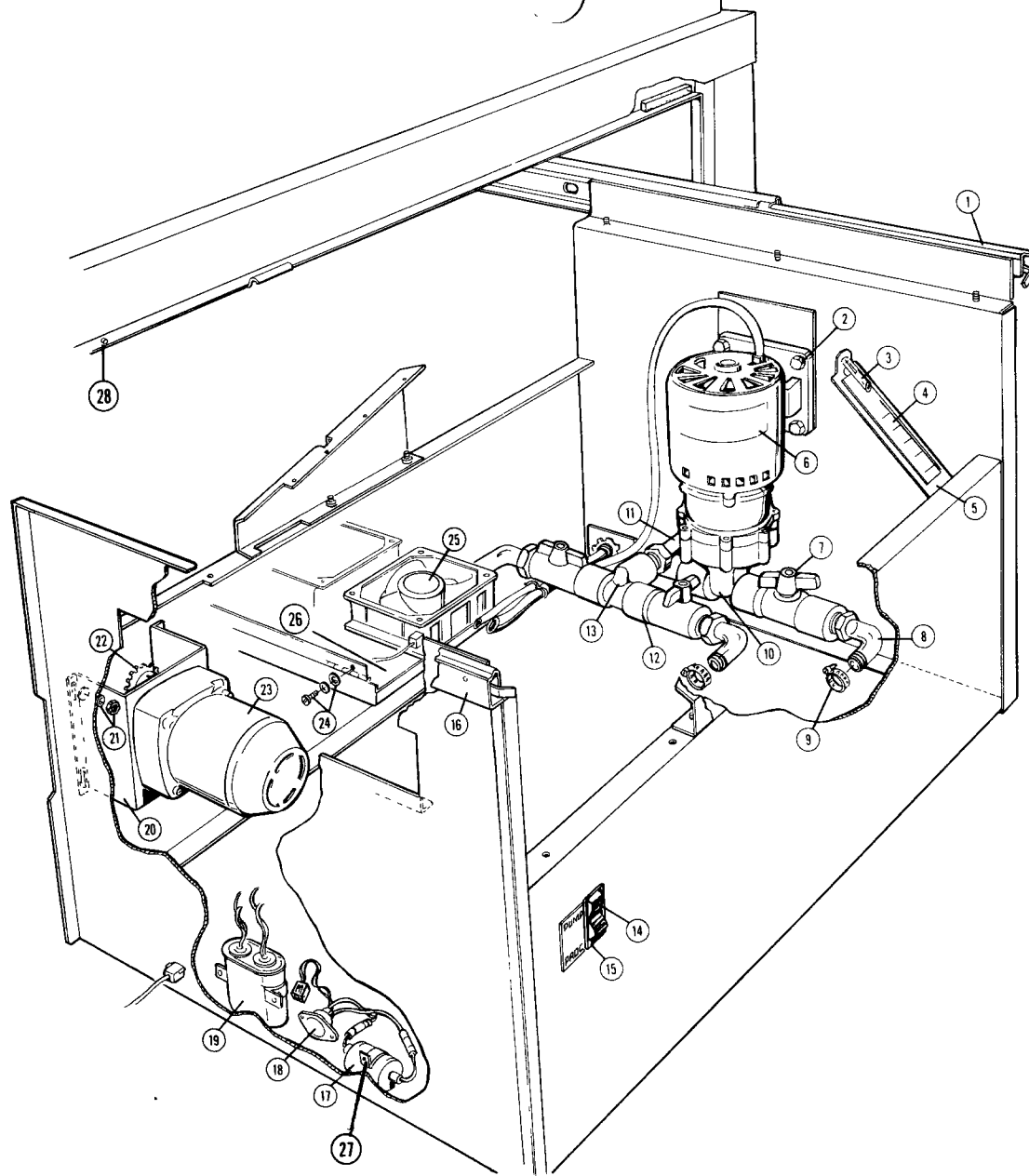


## PROCESSOR/DRYER ASSEMBLY

20203501

REF.	DESCRIPTION	PART NO.	QTY.	AFTER S/N	USE P/N
1	Slide (processor side)	20084401			
2	Hex bolt 1/4-20 x 1/2"	H0477800			
3	Sight glass tube	19276201			
4	Gauge plate	20137001			
5	Sight tube bracket	19385801			
	Flat washer	H0156300			
	Lock washer	H0155100			
	Hex nut 8-32	H0144200			
6	Pump assembly	20075301			
	Pump assy. (motor & impetter)	19115802			
7	Ball valve	19006401	3		
8	Elbow	08327305	3		
9	Clamp	40143912	6		
	Clamp	40143904	2		
10	Threaded tee	01321901			
11	Bushing reducer	01389101			
12	Nipple	P0019000	2		
13	Reducing tee	20082100			
14	Switch	09067801			
15	Suppressor assy.	19940301			
16	Slide - dryer side	20084501			
17	Filter choke assy.	20099702			
18	Triac assy.	20123901			
19	Capacitor	09684600			
	Capacitor bracket	09684700			
20	Motor bracket	20089201			

# PROCESSOR/DISPENSER ASSEMBLY

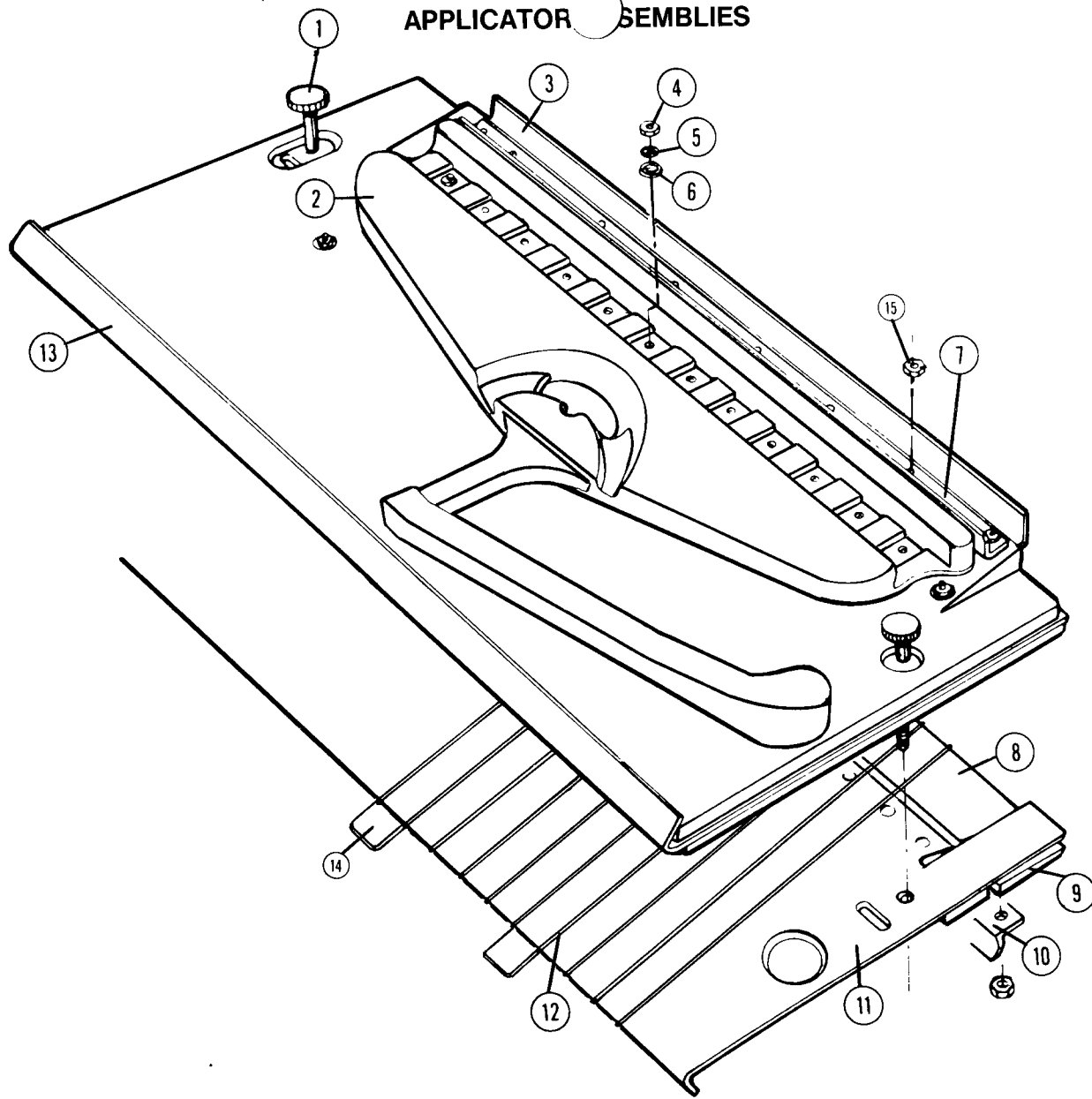


## PROCESSOR/DRYER ASSEMBLY

20203501

REF.	DESCRIPTION	PART NO.	QTY.	AFTER S/N	USE P/N
21	Hex nut 10-32	H0144400	4		
	Flat washer	H0156000	4		
	Lock washer	H0155200	4		
22	Sprocket	09744514			
	Screw	H0323900			
23	Processor/dryer motor	20130001			
24	Machine screw 10-32 x 5/16"	H0144400	3		
	Lock washer	H0155200	3		
	Flat washer	H0156000	3		
25	Fan	E0216500	2		
	Hex nut	H0904000			
26	Fan mtg. plate	20203401			
27	Mounting strap, choke	40143815	1		
28	Switch, interlock	20355401	1	New style	
	Switch bracket	20357001	1	New style	

# APPLICATOR ASSEMBLIES



APPLICATOR ASSEMBLIES

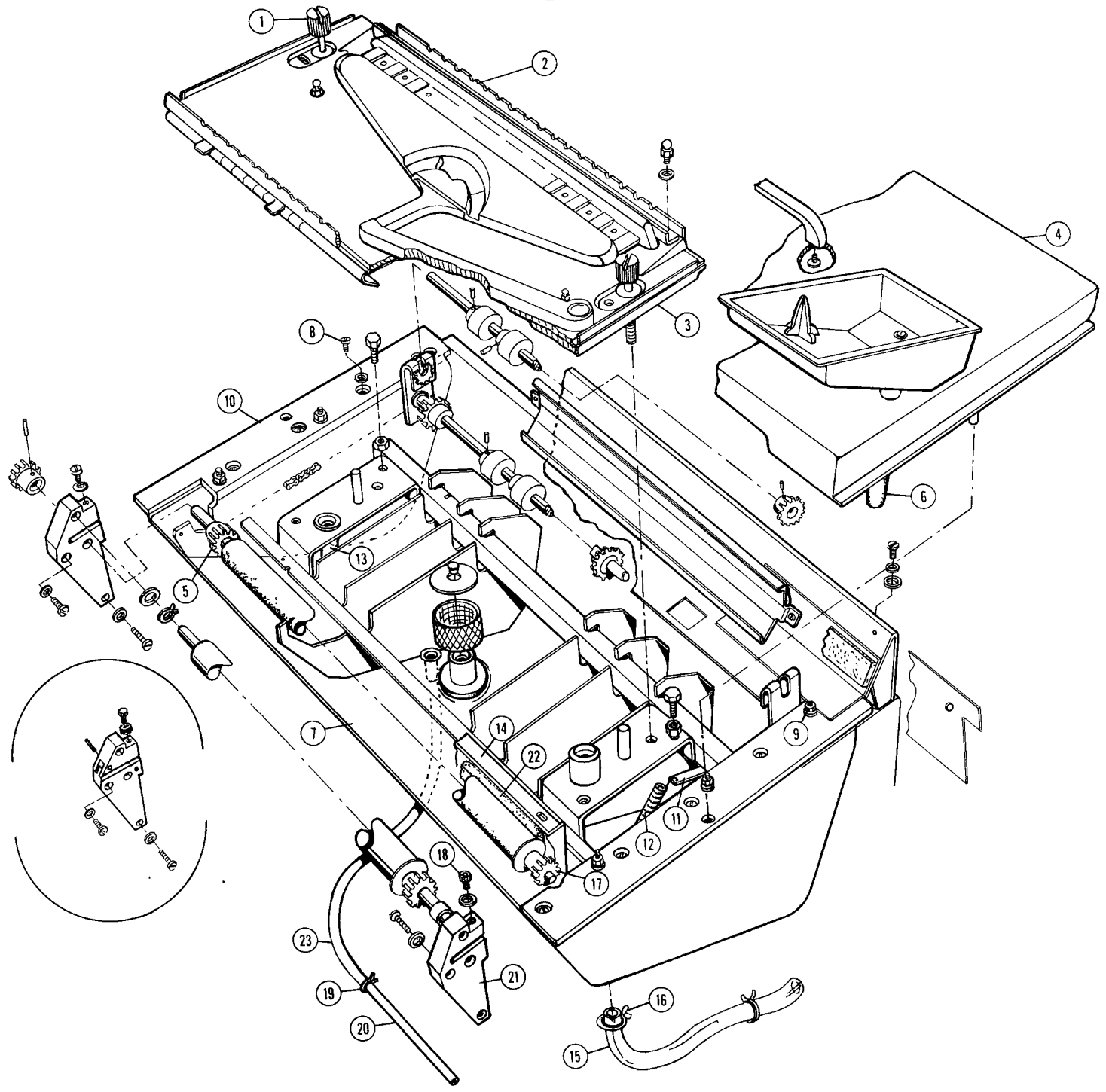
UPPER 20072801

LOWER 20203901

REF.	DESCRIPTION	PART NO.	QTY.	AFTER S/N	USE P/N
1	Thumb screw	19309901			
2	Manifold assy. (upper)	20143301			
3	Toner deflector (upper)	20144101			
4	Nut	H0144100	21		
5	Lock washer	H0156400	21		
6	Flat washer	H0155000	21		
7	Clamp (upper)	19326301			
8	Toner deflector (lower)	19326701			
9	Manifold assy. (lower)	20143201			
10	Manifold clamp (lower)	20072501			
11	Lower applicator frame assy.	20072901			
12	Monofilament (50 yds)	20138702			
13	Upper applicator frame assy.	20052101			
14	Tab (lower applicator)		4		
15	Nut	H0144500	22		
	Washer	H0155700	22		
NS	Washer	H0156500	6		



PROCESS ASSEMBLY

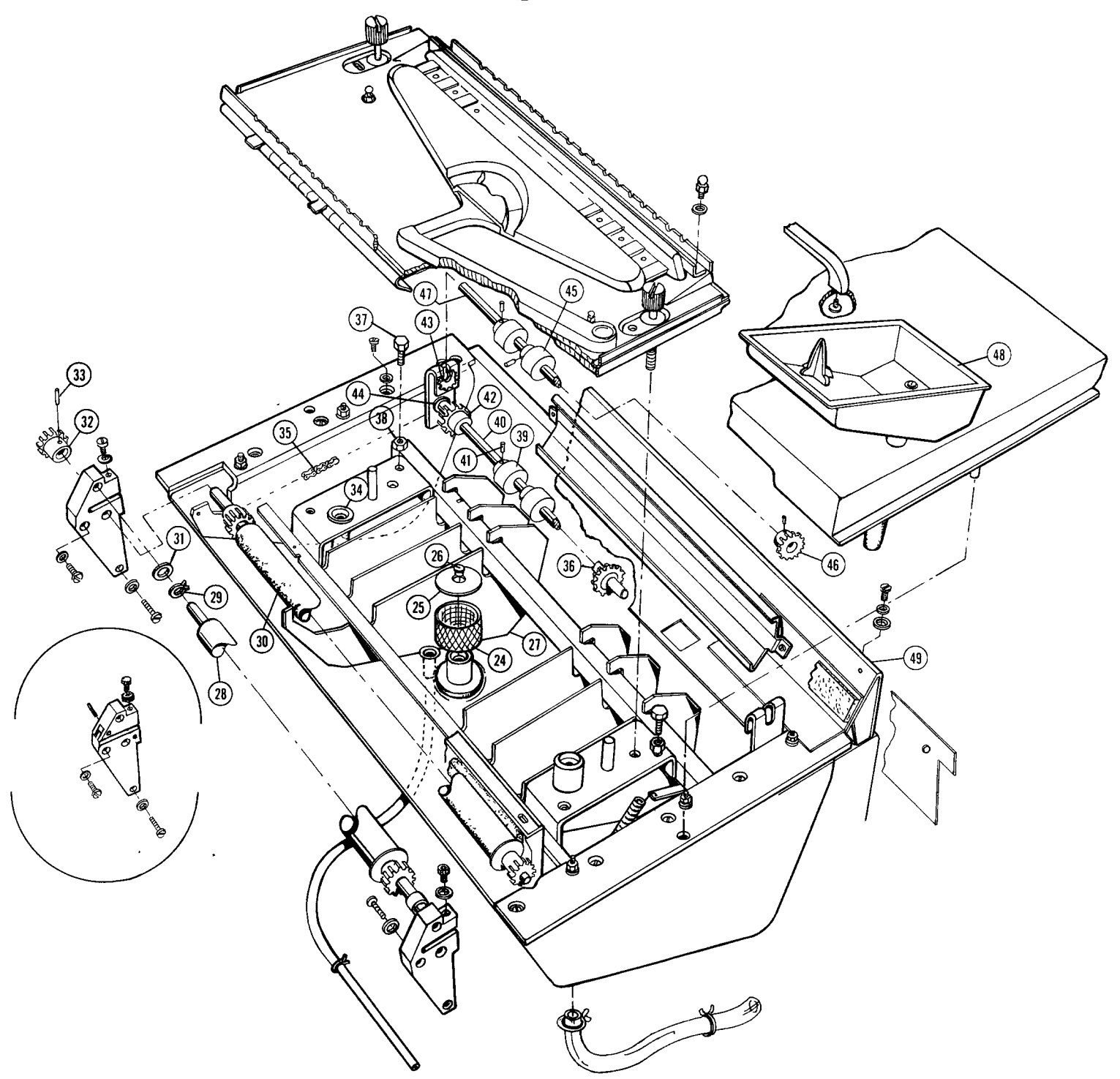


PROCESSOR ASSEMBLY

20204101

REF.	DESCRIPTION	PART NO.	QTY.	AFTER S/N	USE P/N
1	Thumb screw	19309901	2		
2	Upper applicator assy.	20072801			
3	Lower applicator assy.	20203901			
4	Processor cover assy.	20234001			
5	Gear	01328201			
6	Hose	40161477			
7	Processor tank assy.	20204901			
8	Lock washer	H0472200	9		
	Machine screw 8-32	H0155100	9		
9	Hex nut 10-32	H0144400	6		
	Lock washer	H0155200	6		
	Flat washer	H0156000	6		
10	Processor frame weld. assy.	20204601			
11	Clip	19174301			
12	Spring	06763600	2		
13	Tubing	20225902	2		
14	Bracket, scrubber assy.	20204701		842	20340901
	Wiper pan	40151330			
15	Hose (tank to pump intake)	40161469	2		
	Hose (tank to intake valve)	20259201	2		
16	Clamp	40143912	6		
	Clamp	40143904	2		
17	Gear	20359001			
18	Machine screw 10-32 x 1 3/8"	H0321200			
	Flat washer	H0156000			
	Self lock nut 10-32	H0134400			
19	Clamp	40143904	2		
20	Sight glass tube	19276201			
21	Bearing assy.	09073501	2	842	20336101
22	Wiper pad	40151330			
	Machine screw 10-32 x 9/16"	H0472700	4	842	H0066000
	Lock washer	H0155100	4		
	Flat washer	H0156000	4	842	H0156300
23	Tubing	40161470			
NS	Hose, drain	19386901			
NS	Fitting	1941	1		
NS	Insert	1941	1		

36  
PROCESS ASSEMBLY

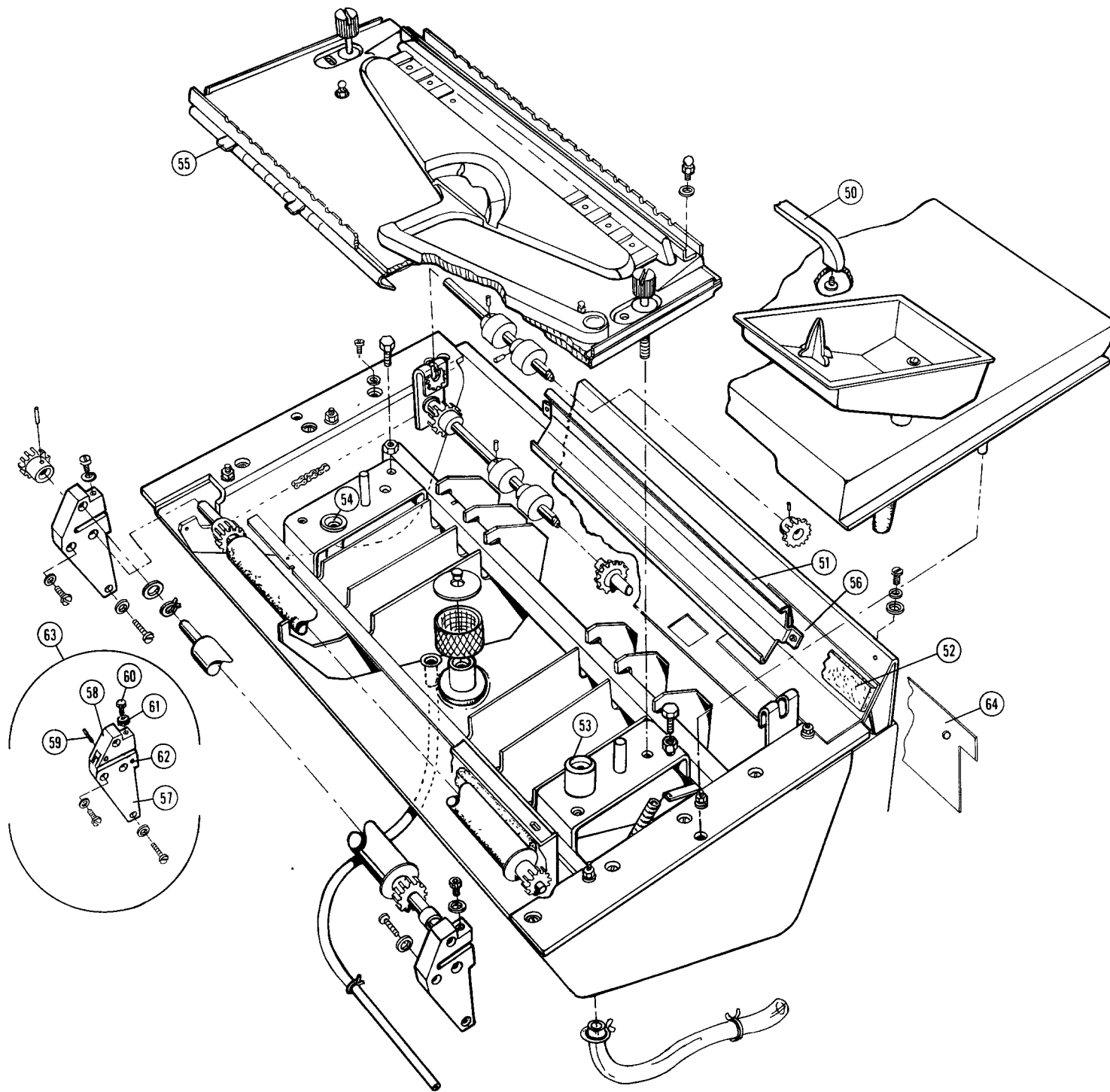


## PROCESSOR ASSEMBLY

20204101

REF.	DESCRIPTION	PART NO.	QTY.	AFTER S/N	USE P/N
24	Screen	19329401		842	20288101
25	Cap	19329501		842	Not used
26	Plug	09050001		842	Not used
27	Baffle	20166001	3		
28	Top squeegee roller	20083501			
29	Retaining ring	H0929000	3		
30	Lower squeegee roller	20083901			
31	Washer	06729900	4		
32	Sprocket	01328501			
33	Spirol pin	H0507700			
34	Seal	19150301			
35	Chain	09702013			
36	Nyliner	06754704			
37	Set screw 1/4 - 20 x 1	H0059000			
38	Hex nut 1/4 - 20	H0144300	4		
39	Roller (only)	20163901			
40	Lower roller assy.	20227501			
	Tolerance Ring	40149216	5		
41	Spirol pin	H0513400			
42	Sprocket	01328001			
43	Nyliner	06754804	2		
44	Grommet	01335301	2		
45	Roller only	20119701	5		
	Tolerance ring	40149216	5		
46	Gear	09238800	2		
47	Processor input roller assy.	20233901			
48	Funnel	20163201			
49	Input guide	20234901			

# PROCESSOR ASSEMBLY

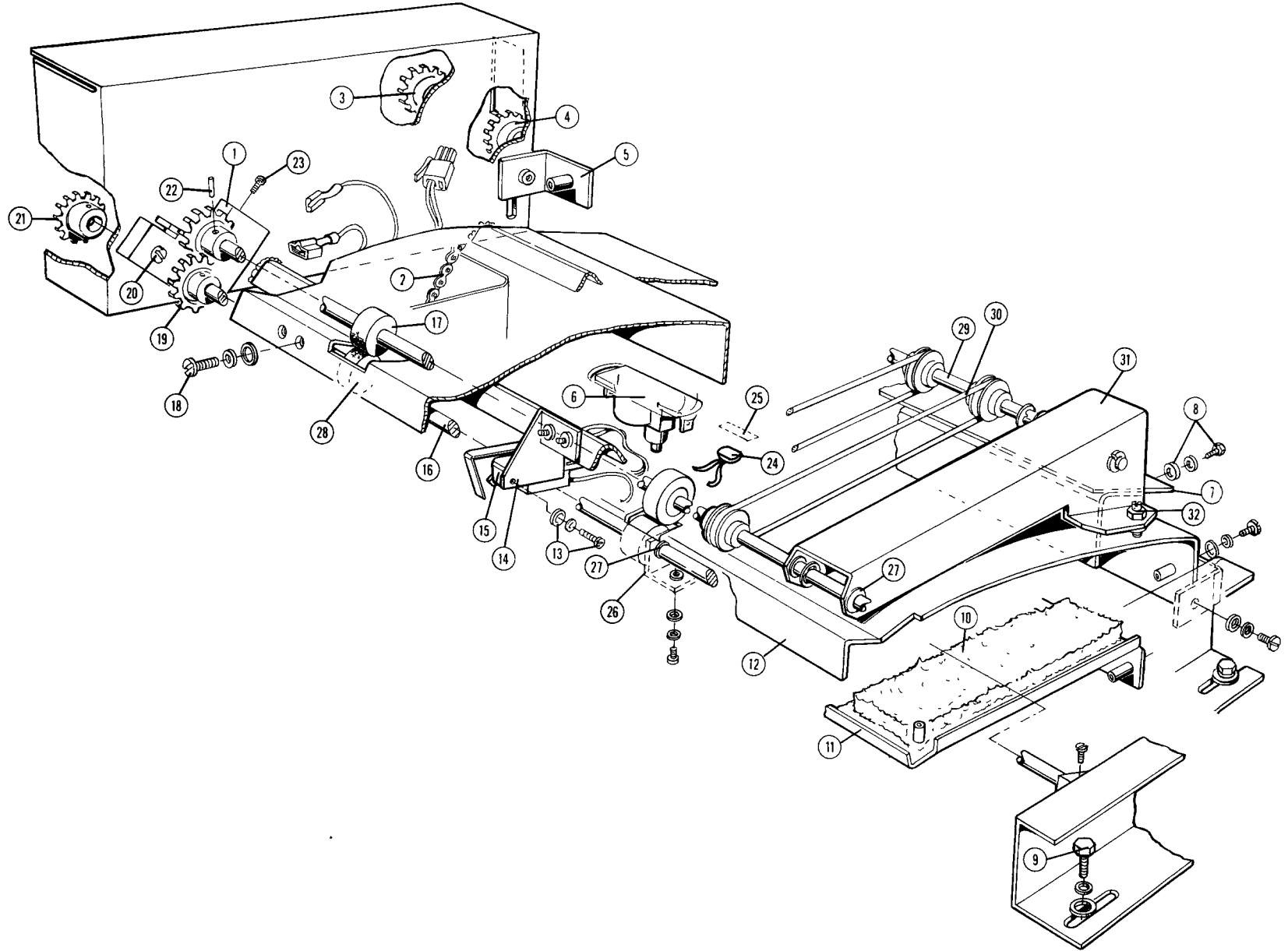


PROCESSOR ASSEMBLY

20204101

REF.	DESCRIPTION	PART NO.	QTY.	AFTER S/N	USE P/N
50	Handle	19531401			
51	Input guide (upper)	20197301	1	842	20346801
52	Foam tape		22"	842	40151334
53	Connector assy.	20143001			
54	Connector assy.	20142901			
55	Tab	20147001	2		
56	Backing plate		1	842	20347101
57	Bearing block lower	20324001	2		
58	Bearing block upper	20324201	2		
59	Pin	H0004500	2		
60	Latch screw cap	20050203	2		
	Latch screw	H0322000	2		
61	Nut	H0125300	4		
NS	O Ring (retainer)	H0900200	2		
NS	Flat washer	H0156900	2		
62	Pin	H0514900	2		
NS	Insert	20324301	2		
63	Squeegee pivot assy.	20335501	2		
	Bearing block mounting screw	H0066600	4		
	Lock washer	H0155100	4		
	Flat washer	H0156300	4	842	20323001
64	Mylar			842	40151338
	Double sided tape				

# DRYER ASSEMBLY



DRYER ASSEMBLY

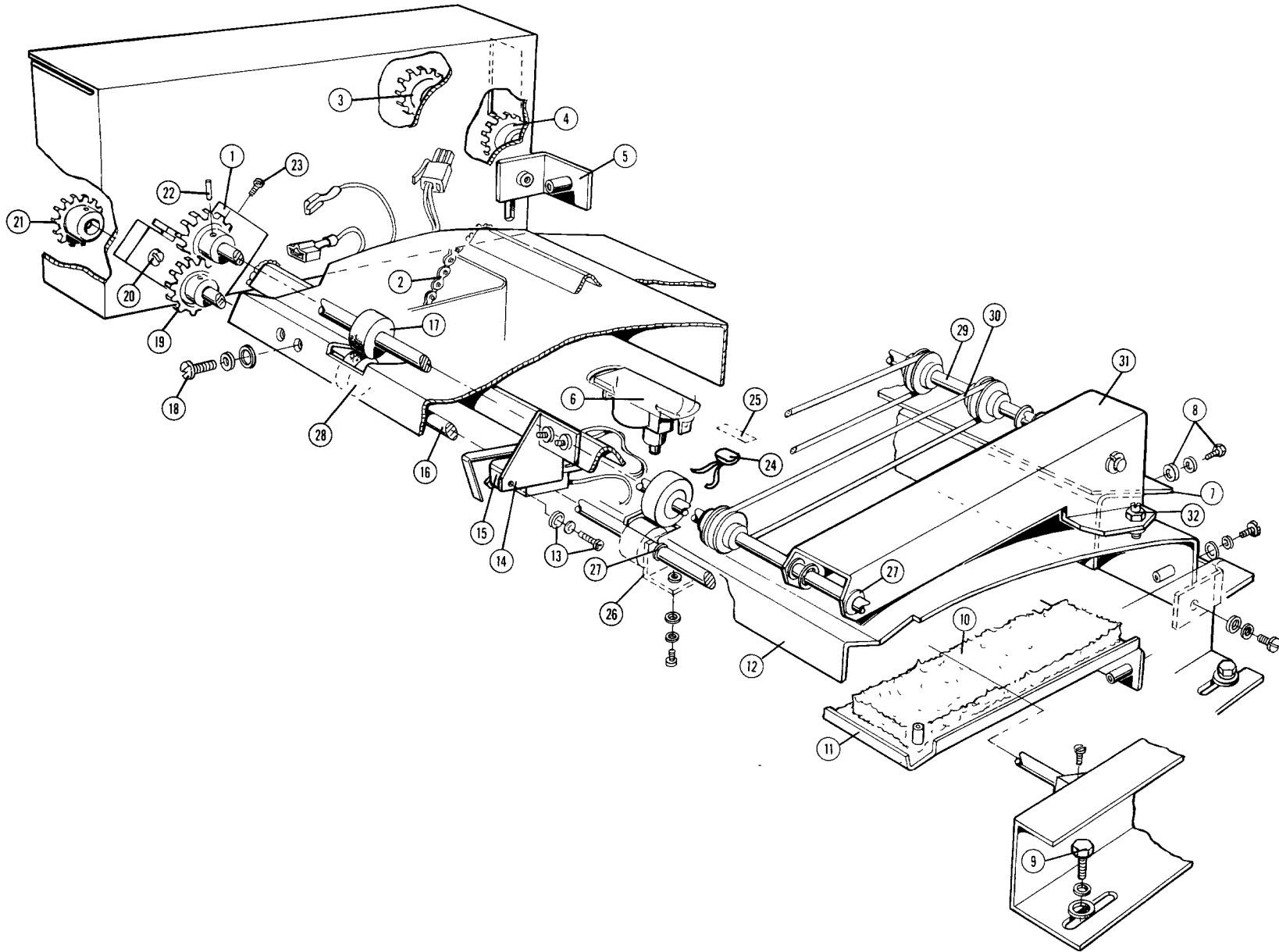
20203301

(DOES NOT INCLUDE ITEM #2)

REF.	DESCRIPTION	PART NO.	QTY.	AFTER S/N	USE P/N
1	Roller bearing	19303801			
2	Chain	40144689			
3	Sprocket assy.	01331001	2		
4	Sprocket assy.	01331001			
	Nylon washer	H0188700	2		
	Retaining ring	H0932800	2		
	Idler, repair kit	20263101	A/R		
5	Bracket assy. (rear)	20092301			
NS	Bracket assy. (front)	20091501			
	Machine screw 8-32 x 3/8"	H0472100			
	Flat washer	H0156300			
	Lock washer	H0155100			
6	Temp. limit	20123501			
7	Guide assy.	20130501			
8	Machine screw 8-32 x 1/2"	H0480700	2		
	Flat washer	H0156000	8		
	Lock washer	H0155100	9		
9	Machine screw 10-32 x 3/8"	H0480000	8		
	Flat washer	H0156200	8		
	Lock washer	H0155200	8		
10	Insulation	20125601			
11	Insulation box	20130801			



# DRYER ASSEMBLY



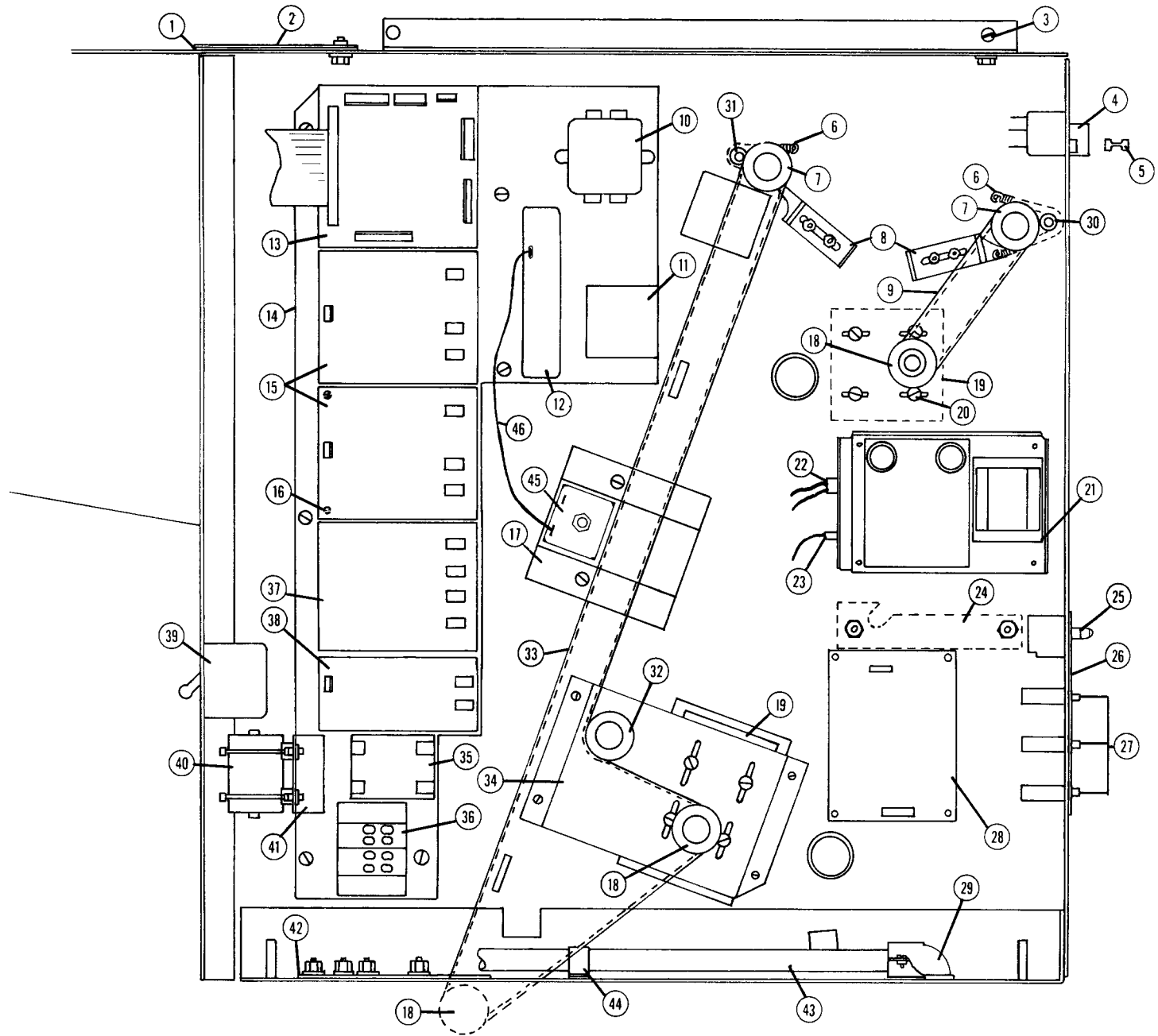
DRYER ASSEMBLY

20203301

REF.	DESCRIPTION	PART NO.	QTY.	AFTER S/N	USE P/N
12	Dryer plate assy.	20091901			
13	Machine screw 4-40 x 5/8"	H0585500	2		
	Flat washer	H0156500	2		
	Lock washer	H0155700	2		
14	Switch bracket assy.	20091402			
15	Switch	20119001			
NS	Nut plate	08949300			
16	Lower roller assy.	20207301			
17	Roller assy. (upper)	20207101			
18	Machine screw 10-32 x 1/2"	H0465200			
	Lock washer	H0155200			
	Flat washer	H0156000			
19	Gear	09238800	2		
20	Machine screw 8-32 x 5/8"	H0472300			
	Flat washer	H0156300			
	Lock washer	H0155100			
21	Sprocket	01328001			
	Pin	H0509300			
22	Pin	H0507700			
23	Machine screw 6-32 x 7/8"	H0470900	2		
24	Termal sensor assy.	20187901			
25	Sensor holder	20187701			
26	Front bearing bracket assy.	20090301			
NS	Rear bearing bracket assy.	20089601			
27	Nyliner	06754706	2		
28	Roller	20158101	2		
	Spirol pin	H0507700	2		
29	Dryer idler roller	20206901			
	a. Shaft	20207001			
	b. Pulley	20164101	4		
	c. Tolerance ring	40149216	4		
30	"O" ring	19511301	6		
31	L.S. dryer roller bracket	20165002			
NS	H.S. dryer roller bracket	20164902			
32	Adjusting screw	H0111200	2		
	Lock nut	H0144	2		

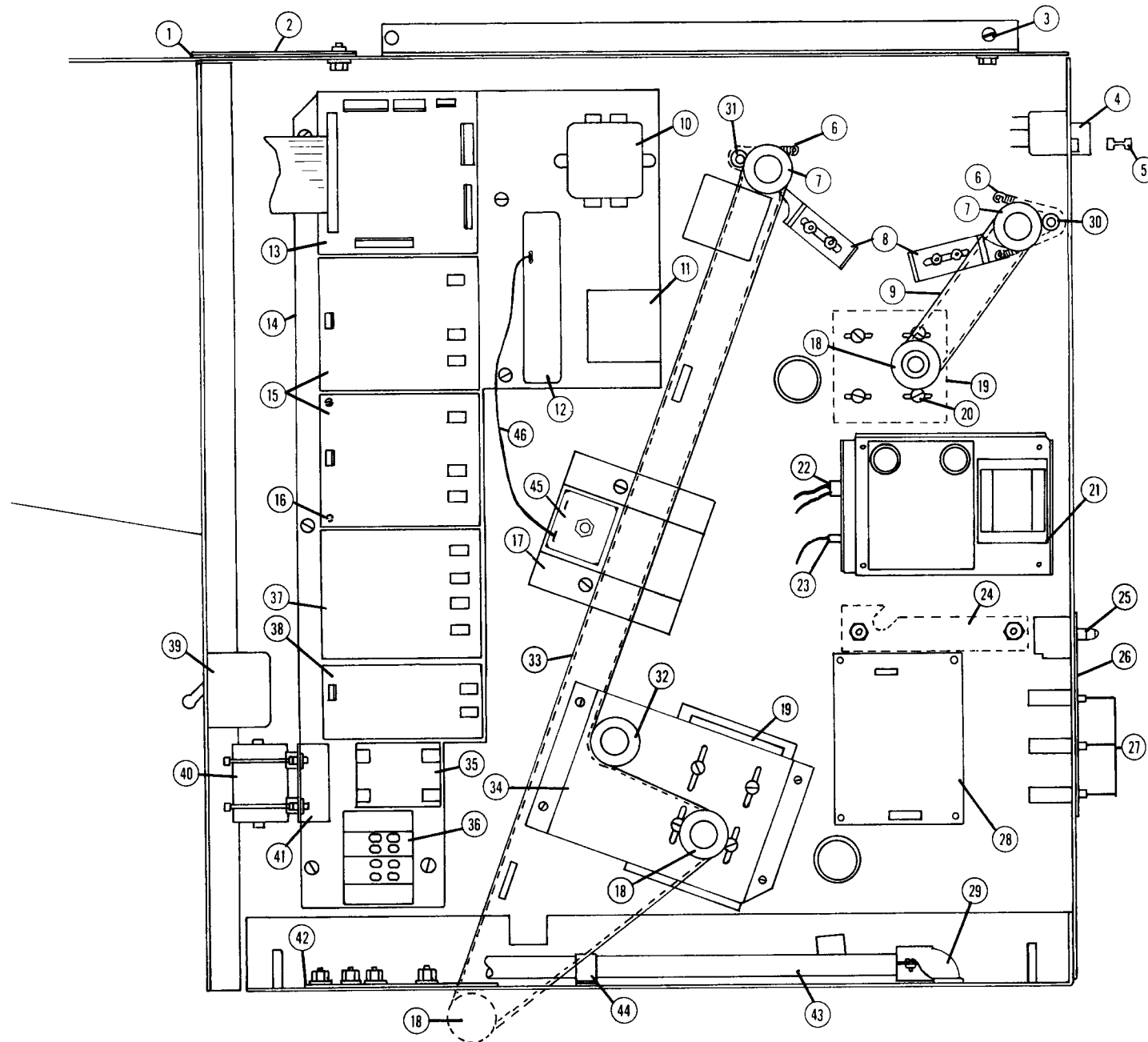
Electrical Panel

Serial # 867 and above



**SIDE PLATE ASSEMBLY** 20353001

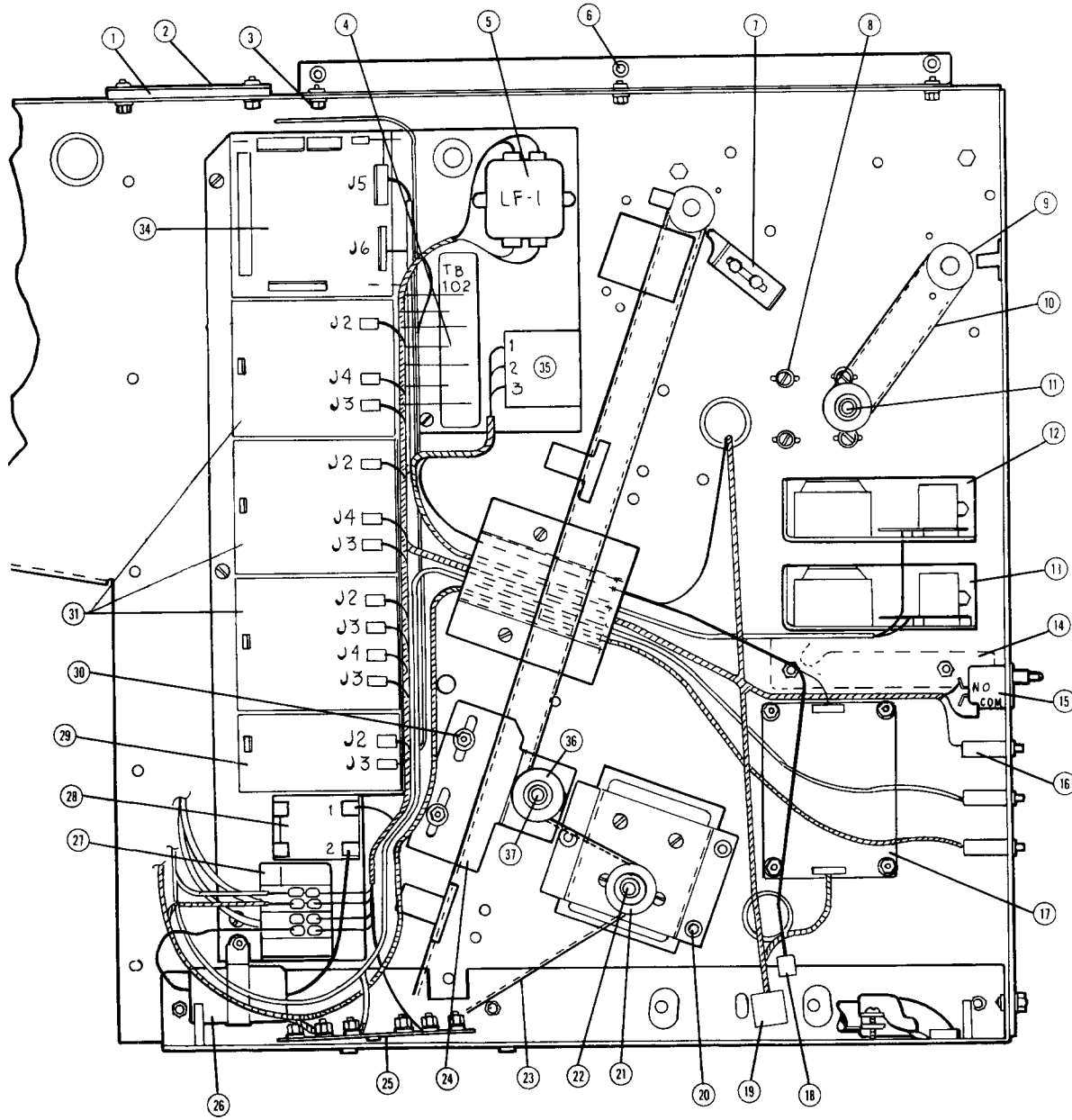
REF.	DESCRIPTION	PART NO.	QTY.	REF.	DESCRIPTION	PART NO.	QTY.
1	Spacer	20046901	1	14	Electrical panel	20109801	1
2	Retaining plate	20046801	1		Screw, 8-32 x 3/16	H0582600	6
	Lock washer, #10	H0155100	2		Lock washer, #8	H0155100	6
	Flat washer, #10	H0156000	2	15	Triac PCB	19960702	2
	Screw, 10-32 x 5/8	H0483100	2	16	Standoff	20293401	20
3	Screw, 8-32 x 1/2	H0472200	4	17	Guard	20448601	1
	Flat washer, #8	H0156300	4		Screw, 8-32 x 1/4	H0471900	2
	Lock washer, #8	H0155100	4		Lock washer, #8	H0155100	2
4	Switch, interlock	20286901	1	18	Pulley	20096101	3
5	Switch, cheater	20323301	A/R		Pin, 3/32	H0507700	1
6	Spring	20177701	4	19	Motor	09096201	2
7	Pulley	19349801	2	20	Screw, 8-32 x 5/16	H0586000	4
	Set screw, 8-32 x 1/4	H0113400	2		Flat washer, #8	H0156300	4
8	Bracket	19875601	4	21	Lock washer, #8	H0155100	4
	Screw, 8-32 x 1/4	H0471900	8		Power supply	20315901	1
	Lock washer, #8	H0155100	8		Screw, 6-32 x 1/2	H0014000	4
	Flat washer, #8	H0156300	8	22	DC harness	20320401	1
9	Belt	20095901	1	23	AC harness	20320601	1
10	RFI filter	40123950	1	24	Paper spool bearing	20292301	4
	Nut, 8-32	H0123200	2		Screw, 8-32 x 5/8	H0472300	4
	Flat washer, #8	H0156300	2		Flat washer, #8	H0156300	4
	Lock washer, #8	H0158400	2		Lock washer, #8	H0155100	4
11	Timer, corona	19164805	1	25	Switch	20128501	1
	Nut, 8-32	H0144200	1		Arc suppressor	20156902	1
	Suppressor Assy. (.5/200V)	20156901	1	26	Label	20202301	1
	Suppressor Assy. (50/60Hz Power Supply only)	20443501	1	27	Circuit breaker	40121703	3
12	Terminal block	03692100	1		Retaining Clip	20426301	3
	Nut, 8-32	H0144200	2	28	Dryer control PCB	20187501	1
	Flat washer, #8	H0156300	2	29	Elbow	08703602	1
	Lock washer, #8	H0158400	2	30	Bearing	01371601	2
13	Interconnect PCB	20238201	1	31	Bearing	01371601	2
					E-Ring	H0933100	2
					Washer, special	4015247R	2



**SIDE PLATE ASSEMBLY** 20353001

REF.	DESCRIPTION	PART NO.	QTY.
32	Pulley	20096301	1
	Screw ¼ - 20 x 1	H0164200	1
	Washer, nylon	H0188700	2
	Flat washer, ¼	H0156200	1
	Lock washer, ¼	H0155300	1
	Nut, ¼-20	H0144300	1
33	Belt	20096001	1
34	Transport motor bracket	20298501	1
	Screw, 8-32 x ¾	H0482500	4
	Flat washer, #8	H0156300	4
	Lock washer, #8	H0155100	4
	Nut, 8-32	H0144200	4
35	Lamp relay	19704101	1
	Flat washer, #8	H0156300	2
	Nut, 8-32	H0904100	2
36	Terminal block	19792402	1
	Flat washer, #8	H0156300	2
	Nut, 8-32	H0904100	2
37	Triac PCB	19660704	1

REF.	DESCRIPTION	PART NO.	QTY.
38	Shutter PCB	20113101	1
39	Circuit breaker	09346501	1
	Nut, 8-32	H0144200	2
	Flat washer, #8	H0156300	2
	Lock washer, #8	H0155100	2
40	Choke assembly	20099701	1
	Wire tie	E0230800	2
	Tie base	20213201	2
41	Choke bracket	20220802	1
	Screw, 8-32 x 5/16	H0586000	2
	Nut, 8-32	H0144200	2
	Lock washer, #8	H0154600	2
42	Ground strap assembly	20140101	1
	Flat washer, #10	H0156000	6
	Lock washer, #10	H0155200	6
	Nut, 10-32	H0144400	6
43	Power cord	05852113	1
44	Cable clamp	40143809	1
	Screw, 8-32 x ¾	H0472100	1
45	Time Delay Module	19252402	1
	Nut, 10-32	H0904200	1
46	Wire Assembly	20448501	1



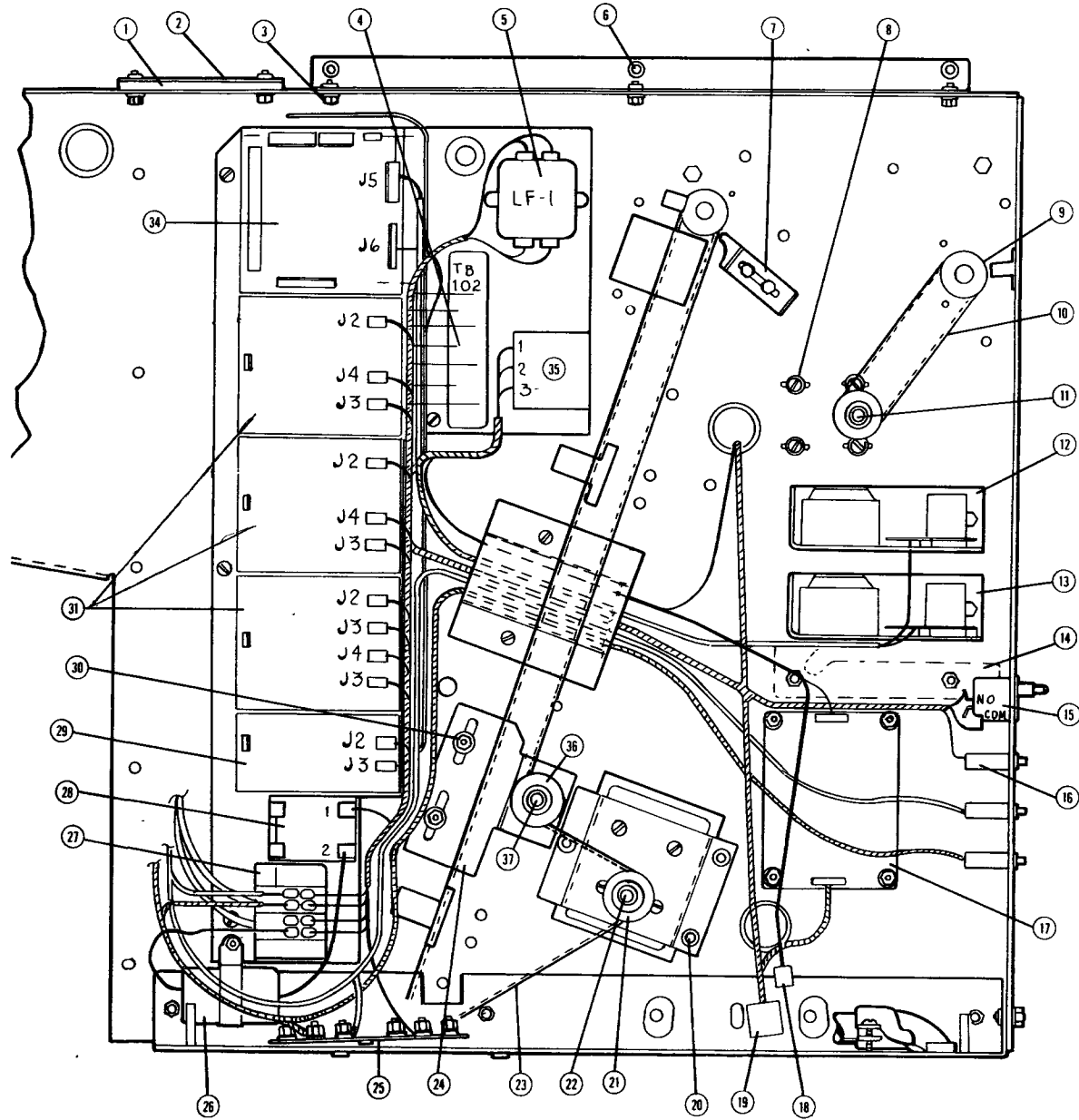
# ELECTRICAL PANEL

REF.	DESCRIPTION	PART NO.	QTY.	AFTER S/N	USE P/N
1	Spacer	20046901	2		
2	Retaining plate	20046802	2		
	Cap screw 10-32 x 5/8"	H0483100	4		
	Flat washer	H0156000	4		
	Lock washer	H0155100	4		
5	Machine screw 8-32 x 3/8"	H0482500	4		
	Flat washer	H0156300	4		
	Lock washer	H0155100	4		
4	Terminal block	03692109			
5	RFI filter	40123950			
6	Machine screw 8-32 x 3/8"	H0472100	4		
7	Bracket	19875601	2		
	Machine screw 8-32 x 3/8"	H0482500	4		
	Flat washer	H0156300	4		
	Lock washer	H0155100	4		
8	Machine screw 8-32 x 3/8"	H0472100	8		
	Flat washer	H0156300	8		
	Lock washer	H0155100	8		
9	Pulley	20096101	3		
10	Belt	20095901			
11	Motor	09096201	2		
12	Power supply assy. 12V	19902301	1		
13	Power supply assy. 5V	19974301	1		
14	Paper roll bearing	20095401	2		
	Machine screw 6-32 x 5/8"	H0065500	4		
	Lock washer	H0155300	4		
	Hex nut 1/4 - 20	H0144300	4		
15	Push button switch	20128501			
16	Circuit breaker	40121703	3		
17	Dryer temp. cont. PCB assy.	20187501			
18	D. C. switch harness assy.	20187801			



46  
EL. RICAL PANEL

Serial # 866 and below



# ELECTRICAL PANEL

REF.	DESCRIPTION	PART NO.	QTY.	AFTER S/N	USE P/N
19	A.C. panel box harness assy.	19973701			
20	Machine screw 8-32 x 3/8"	H0482500	3		
	Lock washer	H0155100	3		
21	Pulley	20096101			
22	Motor	09096201			
23	Belt	20096001			
24	Idler bracket	20112501			
25	Grounding strap assy.	20140101			
	Flat washer	H0156000	6		
	Lock washer	H0155200	6		
	Hex nut 10-32	H0144400	6		
26	Filter choke assy.	20099701			
27	Terminal block	19792401			
28	Solid state relay	19704101			
29	Shutter P.C.B. assy.	20113101			
30	Flat washer	H0156200	2		
	Lock washer	H0155300	2		
	Hex nut 1/4 - 20	H0144300	2		
31	Triac board assy. (3 CKT)	19960704	3		
34	Interconnect P.C.B. assy.	20238201			
	Machine screw 6-32 x 1/4"	H0470400	4		
	Flat washer	H0156400	4		
	Lock washer ext tooth	H0158300	4		
35	Timer (corona cut out)	19164805			
	Resistor	20156901			
36	Pulley	20096101			
37	Shoulder screw 1/4-20 x 1"	H0164200			
	Nylon washer	H0188700	2		