

**Itek Graphix
613S
Platemaster**

**Parts
Manual**



Copyright © 1987 Itek Graphix Corp. All rights reserved. This manual may not be duplicated, reproduced or transmitted (in whole or in part) in any form or by any means, electronic or mechanical, (including without limitation photocopy, facsimile, recording or any information storage and retrieval system) without the prior written consent of Itek Graphix Corp.

Disclaimer of Warranties (Express or Implied). While due care has been taken in the preparation of this manual, Itek Graphix Corp. makes no representation or warranties with respect of the adequacy or accuracy hereof and specifically disclaims any implied warranties of merchantability or fitness for any particular purpose. Further, Itek Graphix Corp. reserves the right to revise this publication and to make changes (both substantial and insubstantial in nature) in the contents hereof from time to time hereafter without obligation of Itek Graphix Corp. to notify any person or organization of such revisions or changes.

Safety Warning. Safety devices have been installed as original equipment for your protection and safety. The removal, disconnection or alteration of any safety guard, protective cover, safety interlock or other safety or protective device comprising part of the equipment described herein poses an undue safety hazard and the same is strictly prohibited.

Disclaimer of Liability. Itek Graphix Corp. disclaims any responsibility or liability for personal injury, death or property damage caused by or arising out of (i) the removal, disconnection or alteration of any safety guard, protective cover, safety interlock or other safety or protective device comprising part of the equipment described herein, or (ii) the failure of the person or persons operating the equipment described herein or servicing or repairing the same to observe all operating and safety procedures and warnings contained herein.

Recommended Technical Training. The instructions herein are designed only to supplement a formalized training program for skilled service technicians who already possess full knowledge of general electrical and mechanical safety procedures. This document is not intended to be a guide for "Do it yourself" repair of the subject equipment by anyone who has not successfully completed a formal technical training course on the subject equipment.

GSD 4-15-87

This equipment complies with the requirements in Part 15 of FCC Rules for a Class A computing device. Operation of this equipment in a residential area may cause unacceptable interference to radio and TV reception requiring the operator to take whatever steps are necessary to correct the interference.

SERVICE PROCEDURES

Safety First

Safety can never be over emphasized in the performance of your day-to-day duties as a Technical Representative, the potential of serious injury is every present. To reduce the possibility of accidental injury, a few safety procedures must be observed when working on any type of equipment.

1. PREPARE YOURSELF

Personal safety is a correct mental and physical attitude. Think before you act. Tuck in your tie, roll up your shirt sleeves, and remove watches and/or rings.

2. REMOVE POWER

If at all possible, troubleshooting should be accomplished with the machine de-energized. If this is not possible, observations should be made from a distance that insures 100% personal safety. By all means, no adjustments or repairs should be attempted while the machine is running.

3. STATIC SAFETY

Static can damage components. Never handle new or defective control boards outside anti-static shipping bag unless a grounded wrist strap is worn.

Never store or ship new or defective control boards outside of anti-static bag.

Never store or ship new or defective control boards near strong electrostatic, electromagnetic, magnetic or radio-active fields.

Wrist strap can be ordered by TK077300 number.

4. TAKING ELECTRICAL READINGS

Due to the amount of electrical components in this machine, electrical troubleshooting, by means of taking voltage readings, may be necessary from time to time. Meter leads should be connected (by means of alligator clips if necessary) after the power plug has been removed from the socket. Return power to the machine in order to take your readings.

5. PROTECT YOUR EYES

The driving of large shear pins can cause flying chips of metal from the hammer or the pin punch. The use of an electrical drill can be equally as dangerous. Wear safety glasses while performing tasks of this nature.

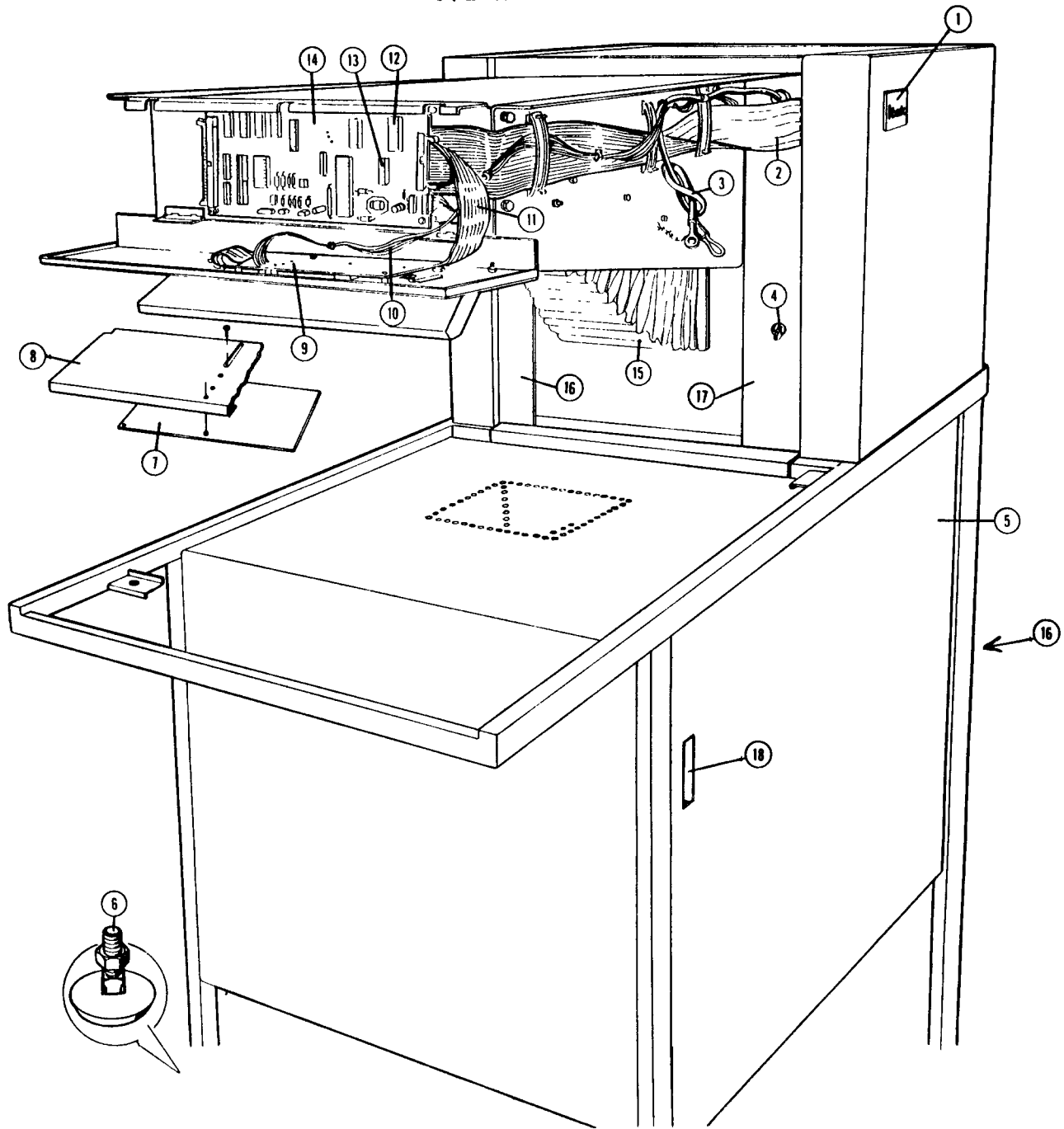
6. NEVER PLACE TOOLS OR PARTS IN A MACHINE
If you violate this rule long enough, you can be assured of
damaging a customer's machine.
7. REPLACE ALL COVERS ON THE MACHINE
They are provided to protect the operator from injury.
8. PLAY IT SAFE!!!

-WARNING-

PRIOR TO PERFORMING SERVICE ON THIS UNIT
REMOVE POWER PLUG FROM WALL

PARTS

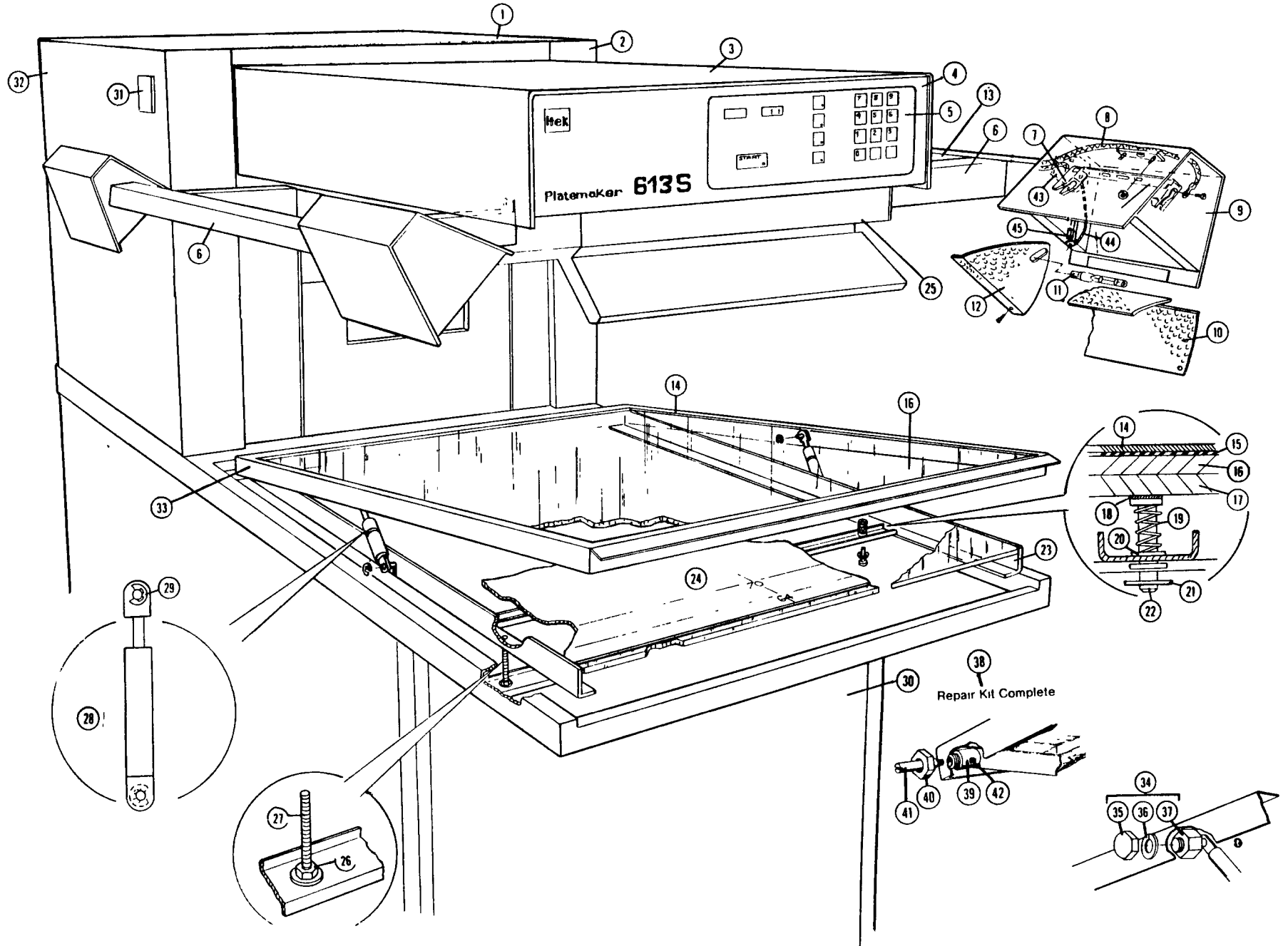
OVERHANG



OVERHANG

Ref.	Description	Part No.	Qty.
1	Logo	20374701	1
2	CPU Board Cable Assy.	19972501	1
3	Lamp Cable latch side	207873	1
	Lamp Cable hinge side	20602401	1
4	Circuit Breaker	09346500	1
5	Processor Door Assy.	208004	1
6	Foot	19604101	4
7	Nut, 3/8-16	H0124700	4
8	Light Shield	20178801	1
9	Display PCB Assy.	20086701	1
	Lamp, Red, "JAM"	19898001	1
	Lamp, Red, "LTS" & "DEV"	20286801	1
10	D.C. Power Cable Assy.	19972601	1
11	Display Board Cable Assy.	19972401	1
12	Prom	20811000	1
13	Memory IC	40124570	1
14	CPU PCB Assy.	20161501	1
15	Bellows Assy.	20069202	1
16	Cover, hinge side	20607501	1
17	Cover, latch side	20607401	1
18	Light Seal	19504403	2
	Double Sided Tape	40151377	A/R
NS	Drain Bucket	20252401	1
NS	Cabinet Fan	E0216500	1
NS	Cabinet Drip Pan	19265401	1

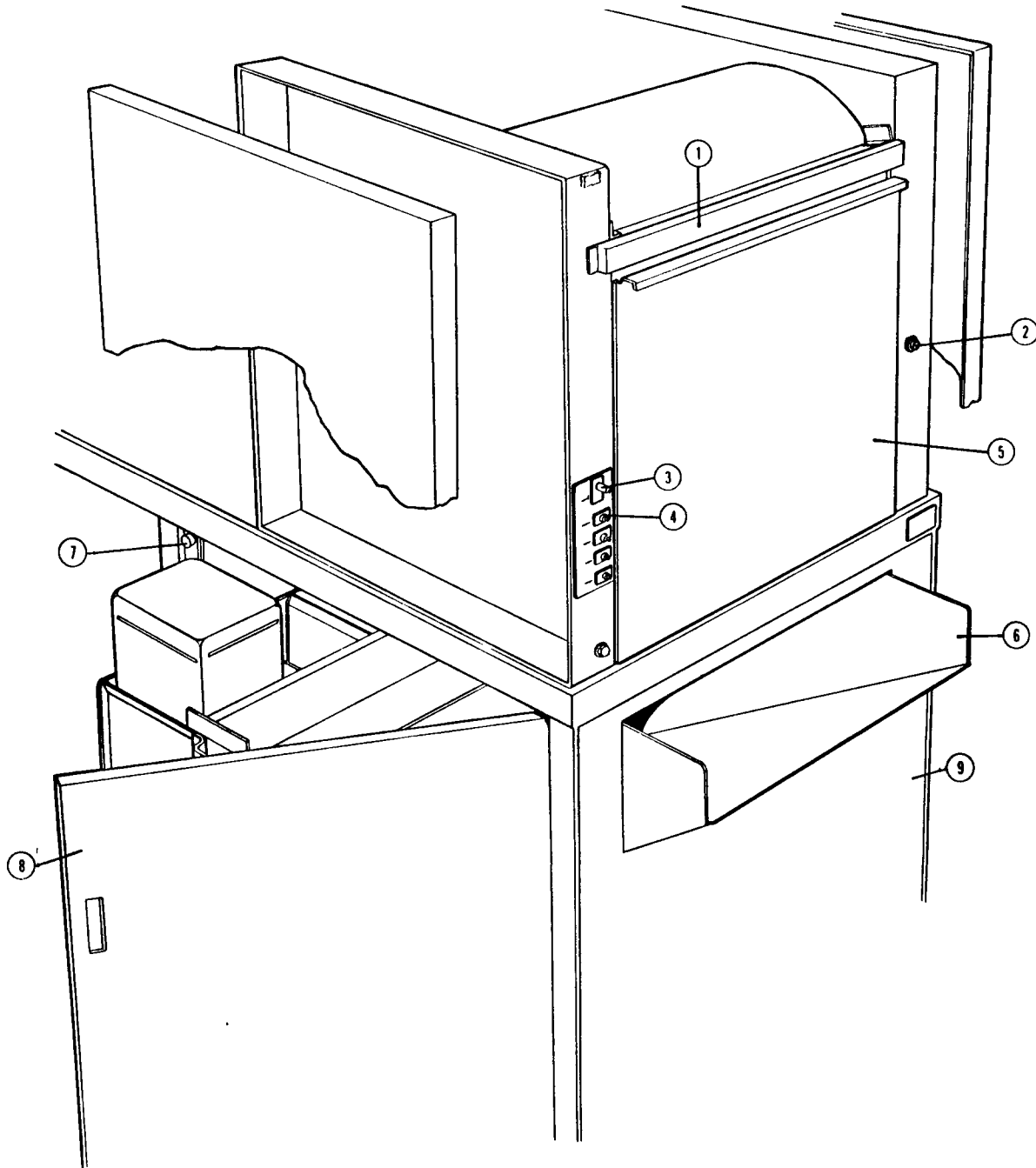
4
LAMP ARMS ASSY. — COPYBOARD ASSEMBLY



COPYBOARD ASSEMBLY 20154501
 LAMP ARMS ASSY. H.S. 20398901
 L.S. 20399001

Ref.	Description	Part No.	Qty.	Ref.	Description	Part No.	Qty.
1	Top Cover	20047604	1	24	Chart (English/Metric)	20096501	1
2	Side Cover (latch side)	20048001	1		Tape to affix chart	40151322	A/R
3	Overhang Cover Assy.	20047701	1	25	Plate	20047201	1
4	Control Panel Assy. Complete	2008205	1	26	Nut	H0124200	8
	Panel Only	20117003	1	27	Stud	H0484700	4
5	Push Button Switch	20085001	1	28	Counter Balance	20143401	2
6	Lamp Frame Weld. Assy.(H.S.)	20395901	1	29	Retaining Ring	H0933100	8
	Lamp Frame Weld. Assy.(L.S.)	20398601	1	30	Base	207991	1
7	Socket Bracket Assy.	206782	1	31	Logo	20374701	1
	Lamp Socket Only	09188201	8	32	Side Cover (hinge side)	20070701	1
8	Lamp Socket Wire	20131001	4		Door Weld. Assy. (rear)	20128601	1
	Lamp Socket Wire, front	206694	2		Magnet, latch	08974200	2
	Lamp Socket Wire, rear	206695	2	33	Hinge Pin	20153401	2
9	Lamp Shell Assy.	20213301	4		Set Screw (hinge)	H0113400	
10	Reflector	206782	4		Nyliner (hinge)	06754703	2
11	Quartz Lamp 500W	19068201	4	34	Stud Repair Kit Complete	20431501	A/R
12	Reflector End	206782	8	35	Nut, 10-32 cap	H0141000	A/R
13	Cover, Lamp Arm	20396001	2	36	Lock Washer, #10	H0155200	A/R
	Machine Screw 10-32 x 3/8"	H0465400	4	37	Pivot Stud	20431601	A/R
	Lock Washer	H0155200	4	38	Hinge Repair Kit Complete	20447001	A/R
	Flat Washer	H0156200	4	39	Bearing	20446801	A/R
14	Cover/Welment Assy.	20152401	1	40	Nut	H0127200	A/R
15	Tape	40151356	A/R	41	Hinge Pin	20446901	A/R
16	Cover Glass	20097701	1	42	Set Screw	H076400	A/R
17	Platen Glass	20097801	1	43	Clamp Plate	20358301	4
18	Adhesive	40143535	A/R	44	Wire Assy. (ground)	20251801	4
	Adhesive Activator	40143536	A/R	45	Fastener	206935	16
19	Compression Spring	20125901	4	NS	Pointed Baffle	20314001	4
20	Nyliner	06754700	4		(Service Part Only)		
21	Retaining Ring	H0933100	8				
22	Platen Stud	20422101	4				
23	Frame Weldment Assy.	20098901	1				

REAR VIEW



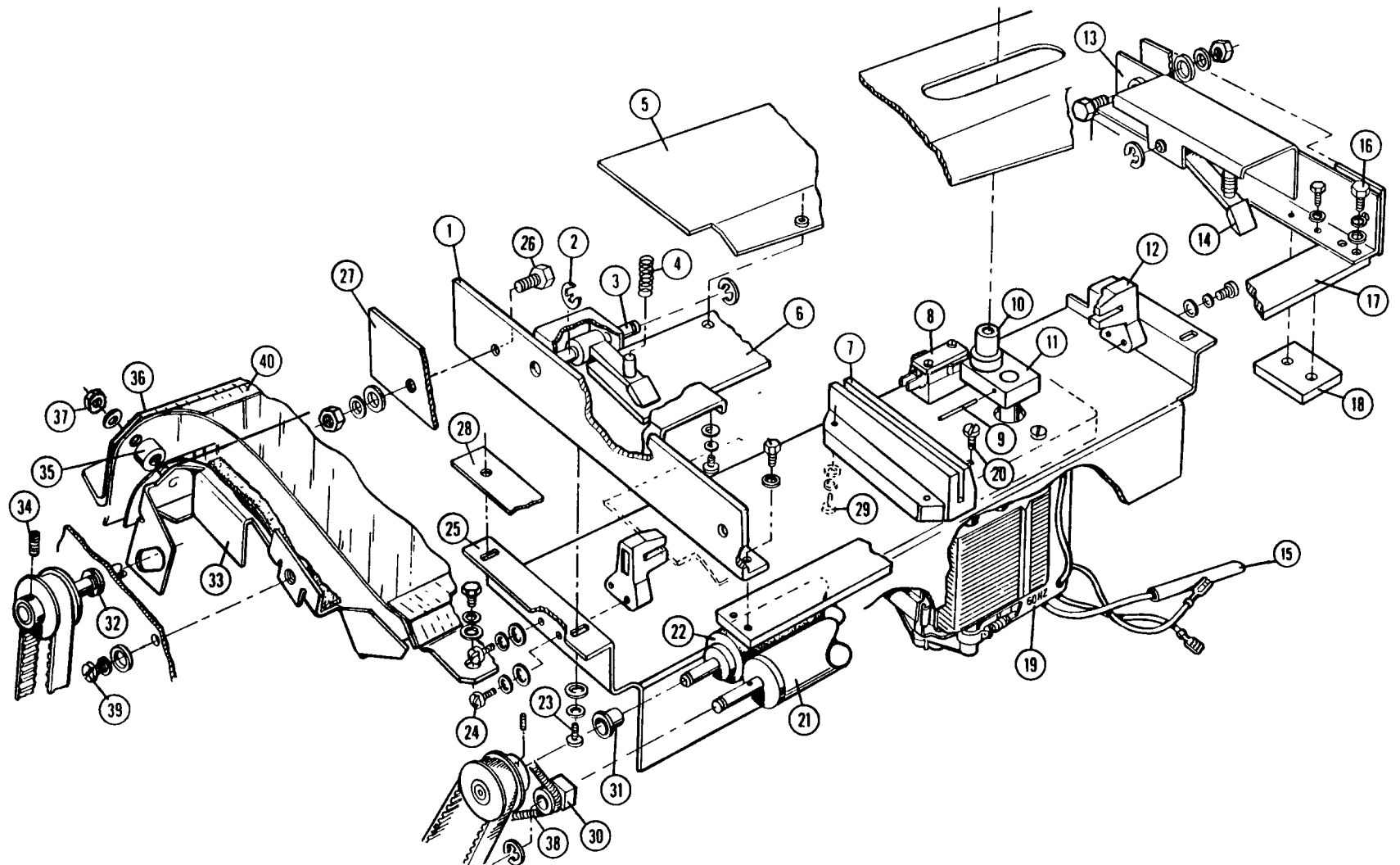
REAR VIEW

Ref.	Description	Part No.	Qty.
---	-----	-----	----
1	Knife Guard	20499801	1
2	Pre-feed Switch	20355301	1
3	Cut Switch	20128501	1
4	Circuit Breaker	40121703	4
5	Door Only	207988	1
	3/8" Foam Tape	40151376	A/R
	3/4" Foam Tape	40151336	A/R
6	Delivery Chute	20804100	1
7	Door Interlock SW	20355401	1
	Switch Bracket	206890	1
8	Door, Processor	208004	1
9	Rear Panel	208022	1
NS	Tape on Light Seal	40151373	A/R

For Complete Door Assy. Order:

Door Only	207988
Foam	40151336
Tape on Seal	CL845100
Latch Hook L.S.	20391901
Latch Hook H.S.	20391801
Nut	HO144200
Washer	HO155100

KNIFE ASSEMBLY

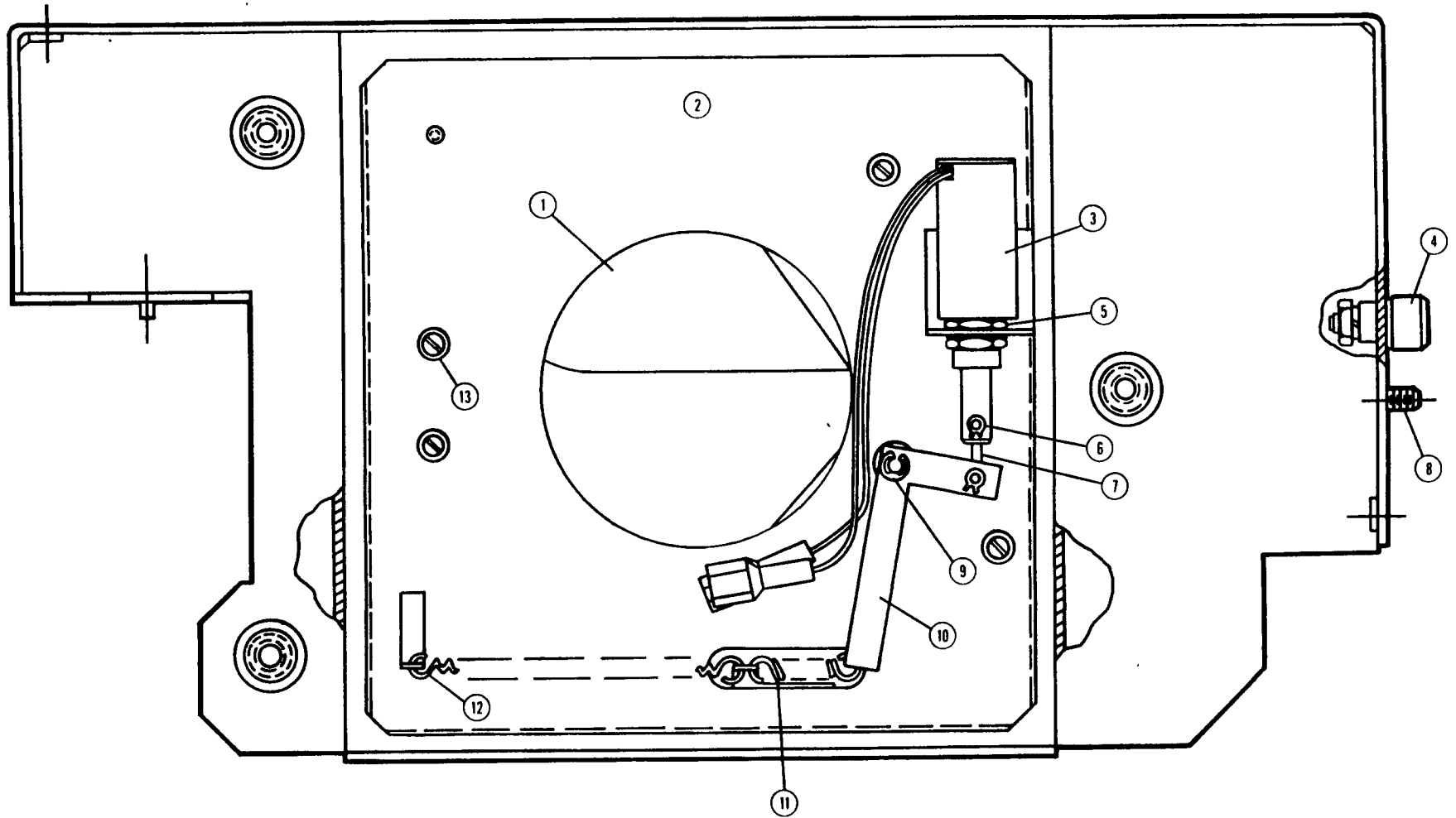


KNIFE ASSEMBLY 20202601

Ref.	Description	Part No.	Qty.	Ref.	Description	Part No.	Qty.
1	Left Support Assy.	20160401	1	26	Machine Screw 8-32 x 7/16"	H0029600	4
2	Retaining Ring	H0933100	4		Flat Washer	H0156300	4
3	Pin	19578201	2		Lock Washer	H0155100	4
4	Spring	09318900	2	NS	Knife Guard Assy.	20499801	1
5	Plate Assy.	20203101	1	27	Knife Insulator	20160601	2
6	Moveable Knife	20202801	1	28	Knife Insulator	20160701	1
7	Guide Block	20241001	1	NS	Knife Insulator	20160801	1
NS	Nut Plate	20241101	1	NS	Step Washer Insulator	20161301	8
8	Switch	01035702	1	29	Screw	H0472300	2
	Machine Screw 4-40 x 3/4"	H0584100	2	30	Bearing	01371601	2
9	Spiral Pin	H0509200	1	31	Bearing	09258021	2
10	Roller	20191401	1	32	Bearing	20177901	2
11	Pivot Plate Assy.	20074601	1	33*	Lower Paper Guide	20303001	1
12	Guide Block	19594401	2	34	Set Screw	H0113400	4
13	Right Support Assy.	20202501	1	35	Spacer	40150178	2
14	Spring Lock	19594601	2	36*	Top Guide Assembly	20302201	1
15	Line Connector	19159501	3	37	Nut	H0144200	2
16	Machine Screw 10-32 x 3/8"	H0480000	6		Washer, Lock	H0155100	2
	Flat Washer	H0156200	6		Washer, Flat	H0156300	2
	Lock Washer	H0155200	6	38	Spring	20177701	2
17	Stationary Knife	19881301	1	39	Bolt 1/4-20	H0065800	2
18	Pad	20202901	1		Washer, Lock	H0155300	2
19	Knife Motor	19322801	1		Washer, Flat	H0156200	2
20	Machine Screw, 8-32 x 3/8"	H0472100	10				
	Flat Washer	H0156300	10				
	Lock Washer	H0155100	10				
21	Back Up Roller Assy.	20377201	1				
22	Paper Drive Roller	20083701	1				
23	Machine Screw	H0296000	4				
	Flat Washer	H0155100	4				
	Shoulder Washer (fiber) .093"	20472101	4				
	Lock Washer	H0155100	4				
24	Machine Screw 8-32 x 7/16"	H0029600	10				
	Flat Washer	H0156300	10				
	Lock Washer	H0155100	10				
25	Motor Bracket	20259001	1				

* Items #33 & 36 assembled - 20250901

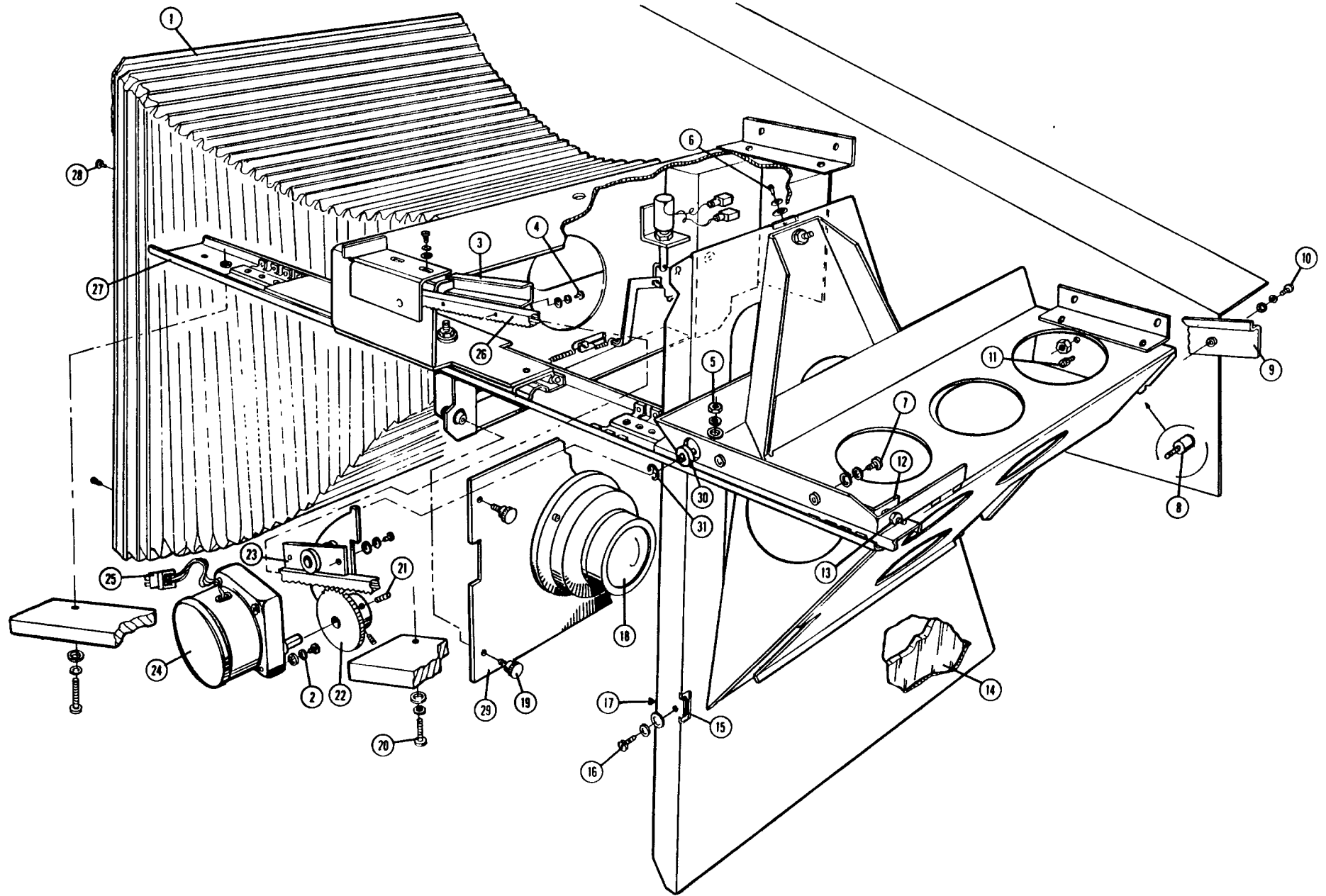
LENS CARRIER ASSEMBLY



LENS CARRIER ASSEMBLY 20114101

Ref.	Description	Part No.	Qty.
1	Shutter Only	19625801	1
2	Shutter Plate Weld. Assembly	20100101	1
3	solenoid Assembly	20135101	1
4	Cam Follower	09352900	1
	Spacer	03658700	1
	Lock Washer	H0155200	1
	Hex Nut	H0144400	1
5	Hex Nut	H0136100	1
6	Retaining Ring	H0930700	2
7	Link	19862801	1
8	Cap Screw	H0273200	1
9	Retaining Ring	H0932900	1
10	Shutter Link	19848301	1
11	Spring Extension, short	19255401	1
12	Spring Extension, long	19255501	1
13	Machine Screw 4-40 x 1/4"	H0586100	4
	Lock Washer	H0155700	4

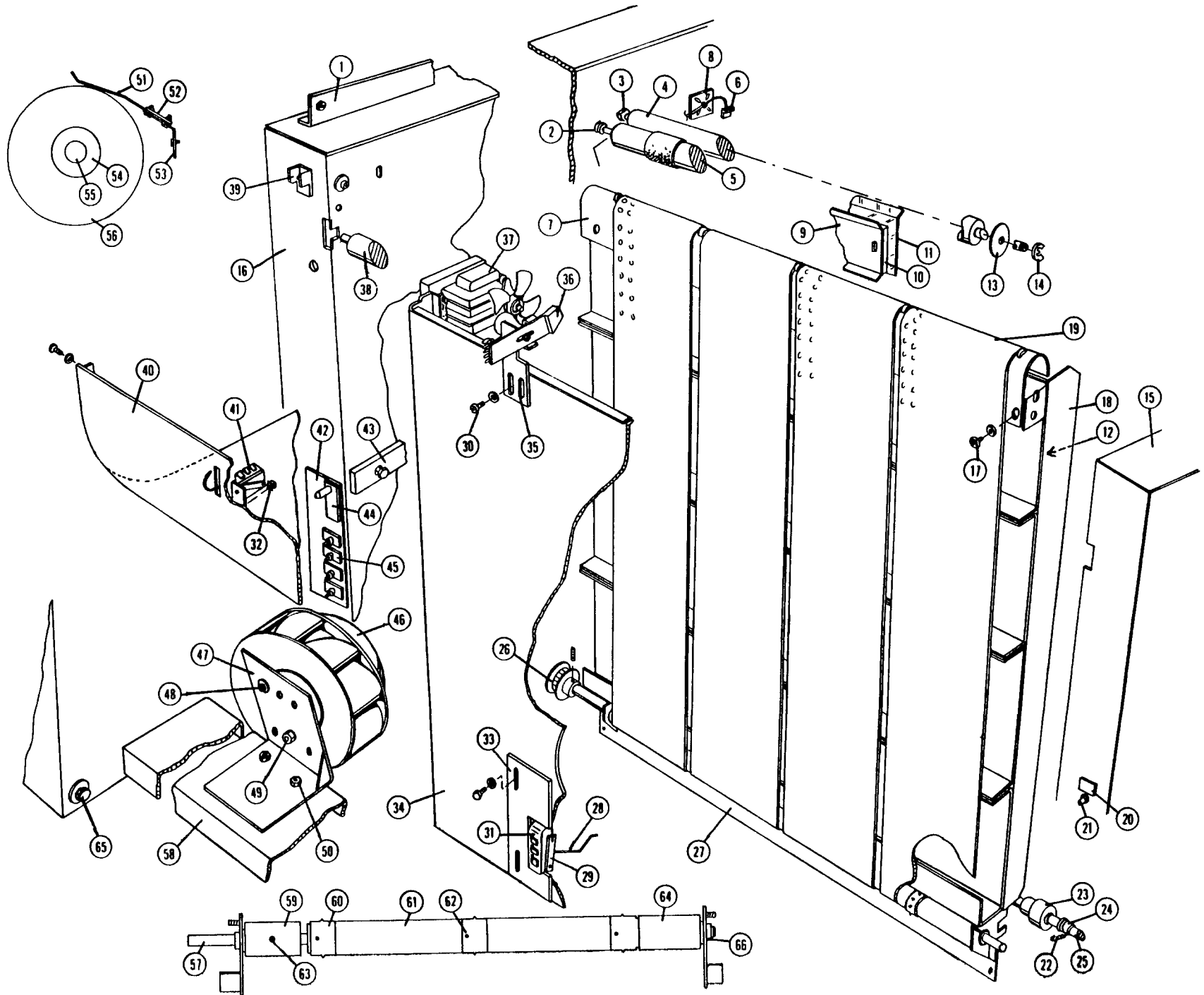
OPTICS ASSEMBLY



OPTICS ASSEMBLY

Ref.	Description	Part No.	Qty.	Ref.	Description	Part No.	Qty.
1	Bellows Assembly	20069202	1	14	Mirror	20084101	1
2	Machine Screw 8-32 x 3/8"	H0472100	4	15	Tape (cork pad)	PL841900	A/R
	Flat Washer	H0156300	4	16	Machine Screw 8-32 x 1/4"	H0471900	3
	Lock Washer	H0155100	4		Lock Washer	H0155100	3
3	Switch Actuator, 100%	20110001	1		Flat Washer	H0156300	3
4	Machine Screw 8-32 x 1/4"	H0471900	2	17	Mirror Clip Assy.	20118301	3
	Lock Washer	H0155200	2	18	Lens	20517302	1
	Flat Washer	H0156300	2	19	Allen Screw	H0273200	3
5	Hex Nut 10-32	H0144400	2	20	Machine Screw 10-32 x 1"	H0065700	3
	Flat Washer	H0156200	2		Lock Washer	H0155200	3
	Lock Washer	H0155200	2		Flat Washer	H0156200	3
6	Machine Screw 8-32 x 1/4"	H0471900	3	21	Set Screw 10-32 x 3/8"	H0116400	2
	Lock Washer	H0155100	3	22	Mirror Cam Assy.	20110301	1
	Flat Washer	H0156300	3	23	Hold Down Assy.	20109701	1
7	Machine Screw 10-32 x 3/8"	H0465400	2	24	Stepper Motor Assy.	20093301	1
	Lock Washer	H0155200	2	25	Connector - plug	40132905	1
	Flat Washer	H0190200	2	26	Gear Rack	20083101	1
8	Cam Followr	09352900	1	27	Ball Slide Assy.	20110101	1
	Spacer	03658700	1	28	Machine Screw 6-32 x 1/4"	H0470100	3
	Lock Washer	H0155200	1	NS	Transmissive Sensor	20065201	1
	Hex Nut 10-21	H0144400	1	29	Lens Plate	20384901	1
9	Guide Rail Assy.	20112102	1	30	Bushing	09258004	1
10	Machine Screw 10-32 x 3/8"	H0465400	4	31	E-Ring	H0927200	1
	Lock Washer	H1552000	4				
	Flat Washer	H0156200	4				
11	Cap Screw 10-32 x 3/8"	H0273200	1				
12	Cam Follower Bracket Assy.	20192101	1				
13	Hex Nut 10-32	H0144400	2				

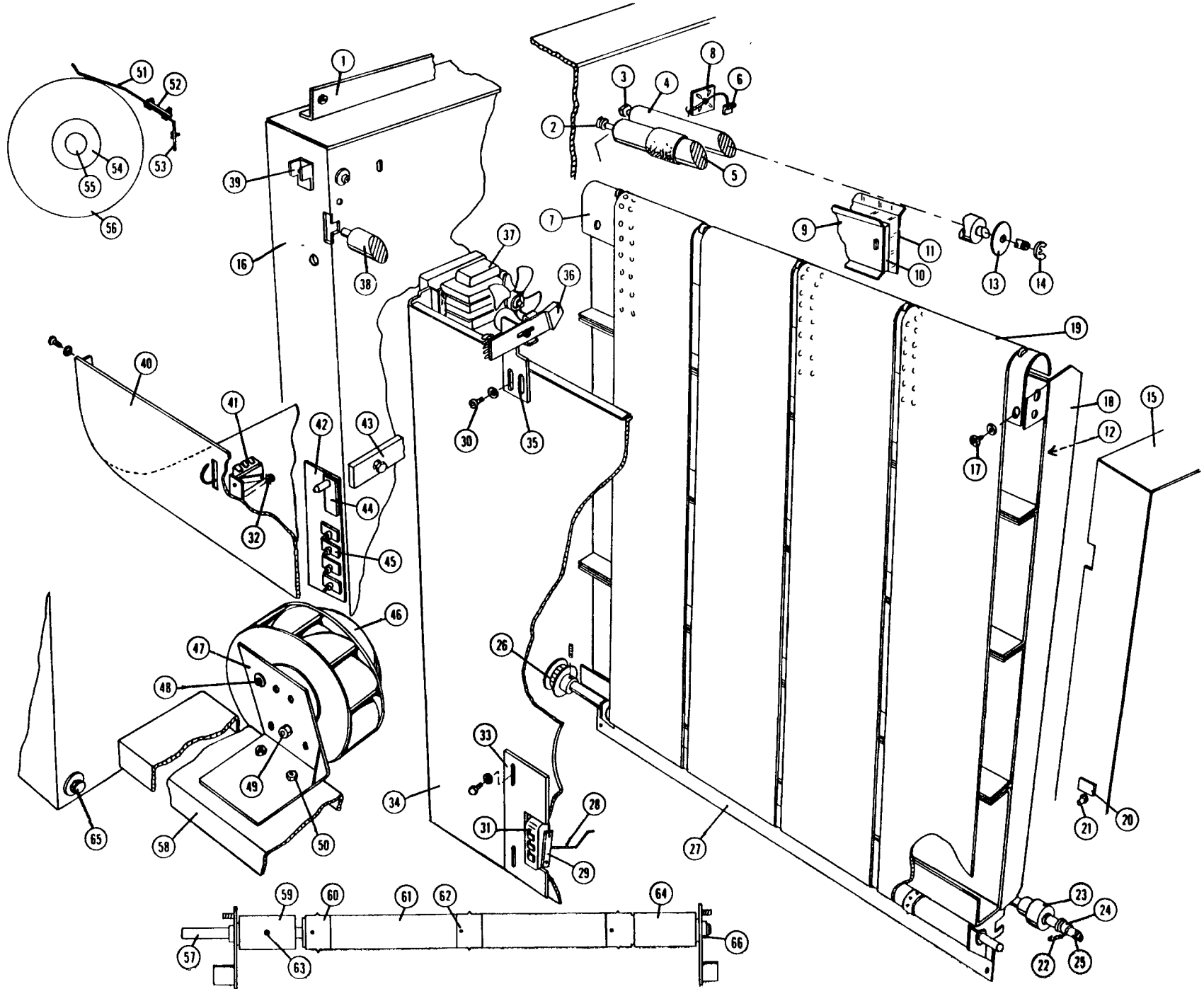
FOCAL PLANE ASSEMBLY



FOCAL PLANE

Ref.	Description	Part No.	Qty.	Ref.	Description	Part No.	Qty.
1	Angle Bracket	20047101	1	28	Actuator	20150001	1
2	Bearing	20177901	2		Sleeving	E0189000	1
3	Bearing	01371601	2	29	Nut Plate	08949300	1
4	Input Roller	20311601	1	30	Screw, 10-32 x 3/8	H0472100	2
5	Input Roller	20082901	1		Flat Washer, #10	H0156000	2
6	Fogger harness	206746	1		Lock Washer, #10	H0155200	2
7	Platen, Guide	20276801	1	31	Switch	19285001	1
8	Cable Base	19480101	A/R		Screw, 4-40 x 3/4	H0584100	2
	Cable Tie	E0230701	A/R		Lock Washer, #4	H0155700	2
9	Guide	207982	2		Flat Washer, #4	H0156500	2
10	Spacer	208048	2	32	Screw, 4-40 x 3/4	H0584100	2
11	Guide, Clear	207983	2		Lock Washer, #4	H0155700	2
12	Platen Overlay	20270301	1		Nut, 6-32	H0144100	2
	Double Sided Tape	40151322	A/R	33	End Sense Switch Assy. Comp.	20293101	1
13	Washer, Plastic	40152478	2	34	Vacuum Back Weldment	20274401	1
14	E-Ring	H0933100	2	35	Transmissive Sensor Bracket	20127201	1
15	Side Plate, H.S.	20360301	1		Screw, 10-32 x 3/8	H0472100	2
16	Side Plate, L.S.	20352502	1		Lock Washer, #10	H0155200	2
17	Screw, 10-32 x 3/8	H0465400	2		Flat Washer, #10	H0156000	2
	Lock Washer, #10	H0155200	2	36	Sensor PCB Assy. 4 Wire Plug	20378501	1
	Flat Washer, #10	H0156000	2		Screw, 4-40 x 5/16	H0585200	1
18	Platen Assembly Complete	20276701	1		Nut, 4-40	H0144500	1
19	Belt	20503101	1	37	Motor, Wind	09096201	1
20	Label	20142601	1	38	Roller, Metal	20377201	1
21	Switch	20355301	1		Roller, Rubber Drive	20083701	1
22	Spring	09572400	2	39	Switch, Interlock	20286901	1
23	Roller	20157901	2		Cheater, Switch	20323301	A/R
24	Bearing	01371601	2	40	Upper Paper Guide Assy. Comp.	20109301	1
25	Plate Roller Assy. Complete	20270201	1		Screw, 10-32 x 3/8	H0472100	4
	Shaft Only	20270101	1		Lock Washer, #10	H0155200	4
	E-Ring	H0933100	2	41	Switch	19285001	1
	Pin, 3/25 x 3/8	H0507700	2		Switch Bracket	20106901	1
26	Pulley	20096101	1		Actuator	40140302	1
	Pin, 3/32 x 5/8	H0507700	1	42	Label	20202401	1
27	Input Guide	208023	1	43	Paper Roll Bearing	20292301	4
	Nut, 6-32	H0144100	2		Screw, 8-32 x 5/8	H0472300	4
	Lock Washer, #8	H0155000	2		Flat Washer, #8	H0156300	4
	Flat Washer, #8	H0156400	2		Lock Washer, #8	H0155100	4

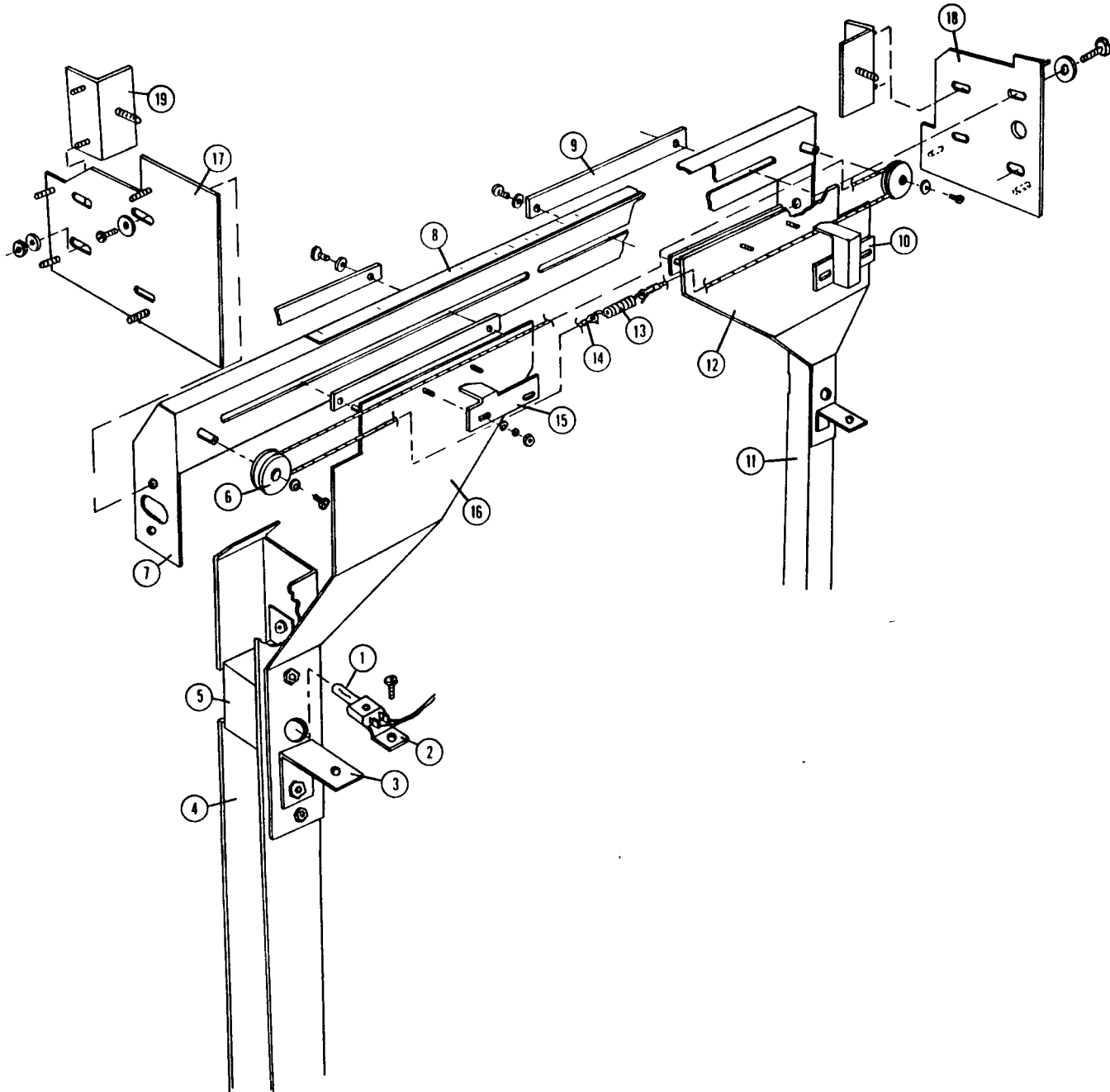
FOCAL PLANE ASSEMBLY



FOCAL PLANE

Ref.	Description	Part No.	Qty.
---	-----	-----	---
44	Switch, Push Button	20128501	1
45	Circuit Breaker	40121703	4
46	Vacuum Blower Assy.	20093401	2
47	Blower Mount	20610401	1
	Blower Plate	20130401	1
48	Screw, "Metric"	H0725000	8
	Flat Washer, #8	H0156300	8
	Lock Washer, #8	H0155100	8
49	Nut, 1/4-20	H0144300	4
	Lock Washer, 1/4	H0155300	4
	Flat Washer, 1/4	H0156200	4
50	Cap Screw 1/4-20 x 3/8	H0059500	2
	Washer	09888600	2
	Pad, Vibration	19803201	2
	Pad, Vibration	20610301	1
51	Drag Spring	19069701	2
52	Plate Assembly	19069801	2
	Screw, 8-32 x 5/16	H0586000	4
	Lock Washer, #8	H0155100	4
53	Paper Tension Bracket	20095201	1
	Screw, 10-32 x 5/8	H0472100	2
	Lock Washer, #10	H0155200	2
54	Nut	19162901	2
55	Spool Shaft	20217601	1
56	Spool End	20178301	1
57	Roller Shaft	20273601	1
58	Tie Bar	20095301	1
59	Roller Segment, Adjustable	20273401	1
60	Sprocket	20180901	3
61	Roller Segment	20203201	2
62	Pin, 3/32 x 7/8	H0513700	3
63	Set Screw, 10-32 x 1/4	H0691500	1
64	Roller Segment	20270001	1
65	Flat Washer, 1/4	H0156200	4
	Spacer	40150176	2
	Lock Washer, 1/4	H0155300	2
	Cap Screw, 1/4-20 x 5/8	H0478300	2
66	Bearing	09258014	2

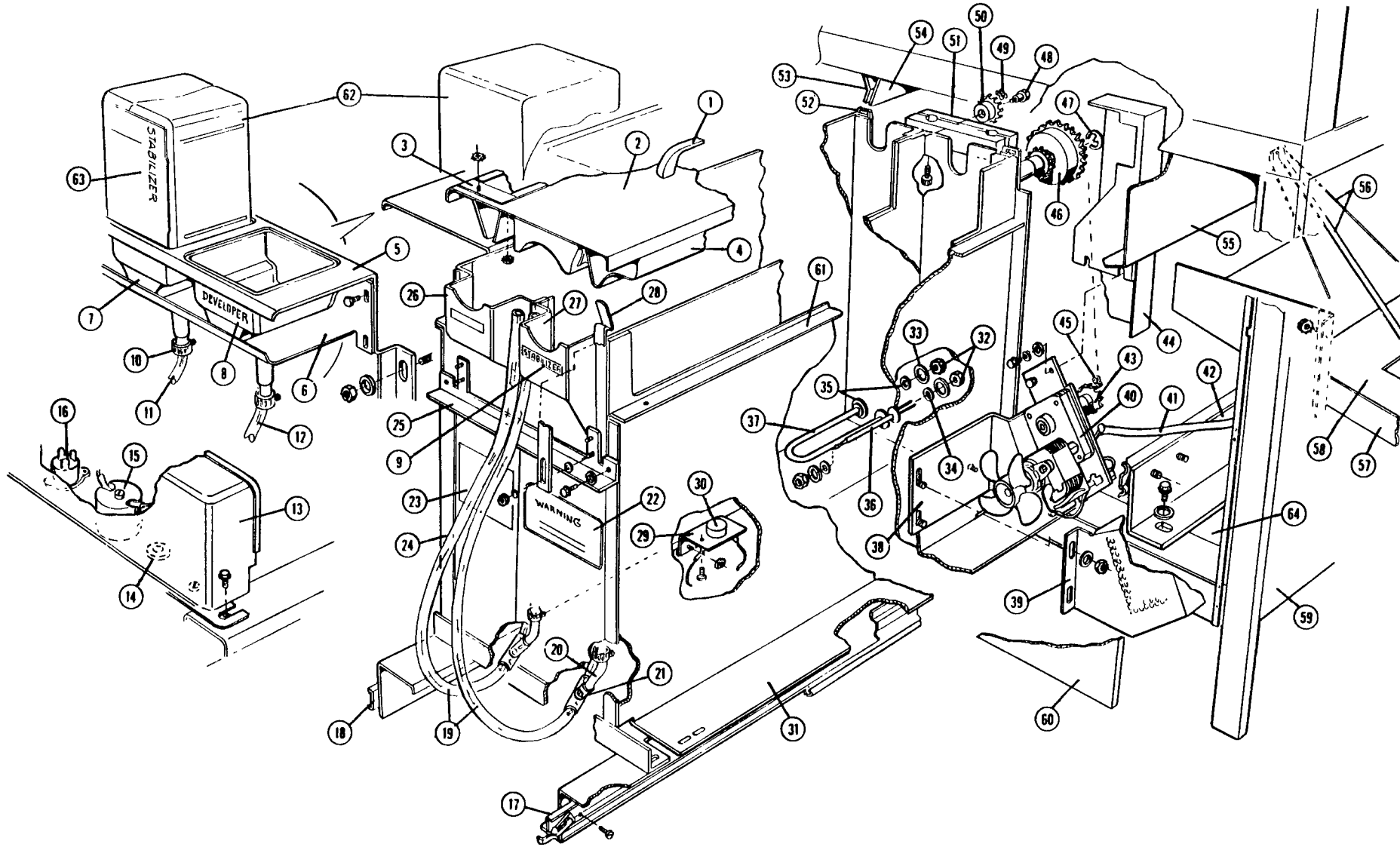
SIDE GUIDE ASSEMBLY



SIDE GUIDE ASSEMBLY 207980

Ref.	Description	Part No.	Qty.	Ref.	Description	Part No.	Qty.
1	Lamp	19214301	2	11	Channel Assembly R.H.	20805200	1
2	Harness Assy.(includes sockets)	206746	1	12	Arm, R.H.	20805000	1
	Screw, 4-40 x 5/16	H0585200	2	13	Spring	19954401	1
	Lock Washer, #4	H0155700	2	14	Cable	207981	1
3	Lamp Mount Angle	20368801	2	15	Pointer	20361101	1
	Nut, 6-32	H0904000	2		Nut, 6-32	H0904000	4
	Lock Washer, #6	H0155000	2		Lock Washer, #6	H0155000	2
	Flat Washer, #6	H0156400	2		Flat Washer, #6	H0156400	2
4	Channel Assembly L.H.	20805300	1	16	Arm, L.H.	20805100	1
	Nut, 6-32	H0904000	4	17	Side Guide Bracket H.S.	20367801	1
	Lock Washer, #6	H0155000	4		Nut, 4-40	H0144500	4
	Flat Washer, #6	H0156400	2		Flat Washer, #4	H0156500	4
5	Lamp Cover	20804900	2		Lock Washer, #4	H0155700	4
	Nut, 6-32	H0904000	4		Screw, 8-32 x 1/4	H0471900	2
	Lock Washer, #6	H0155000	4		Flat Washer, #8	H0156300	2
	Flat Washer, #6	H0156400	2		Lock Washer, #8	H0155100	2
	Light Gate Plate	20805700	2	18	Side Guide Bracket L.H.	20367902	1
6	Cable Roller	20297701	2		Nut, 4-40	H0144500	3
	Screw, 6-32 x 1/4	H0683600	4		Flat Washer, #4	H0156500	3
	Lock Washer, #6	H0155000	4		Lock Washer, #4	H0155700	3
	Flat Washer, #6	H0156400	4		Screw, 8-32 x 1/4	H0471900	2
7	Pulley Bracket Assembly	207985	1		Flat Washer, #8	H0156300	2
8	Scale	20376301	1		Lock Washer, #8	H0155100	2
9	Spacer	20376301	4	19	Guide Bracket	20171001	2
	Screw, 6-32 x 3/8	H0683700	4		Nut, 6-32	H0904000	4
	Lock Washer, #6	H0155000	4		Lock Washer, #6	H0155000	4
	Flat Washer, #6	H0156400	4		Flat Washer, #6	H0156400	4
10	Pointer Handle	20361201	1		Nut, 8-32	H0904100	2
	Nut, 6-32	H0904000	2		Flat Washer, #8	H0156300	2
	Lock Washer, #6	H0155000	2		Lock Washer, #8	H0155100	2
	Flat Washer, #6	H0156400	2				

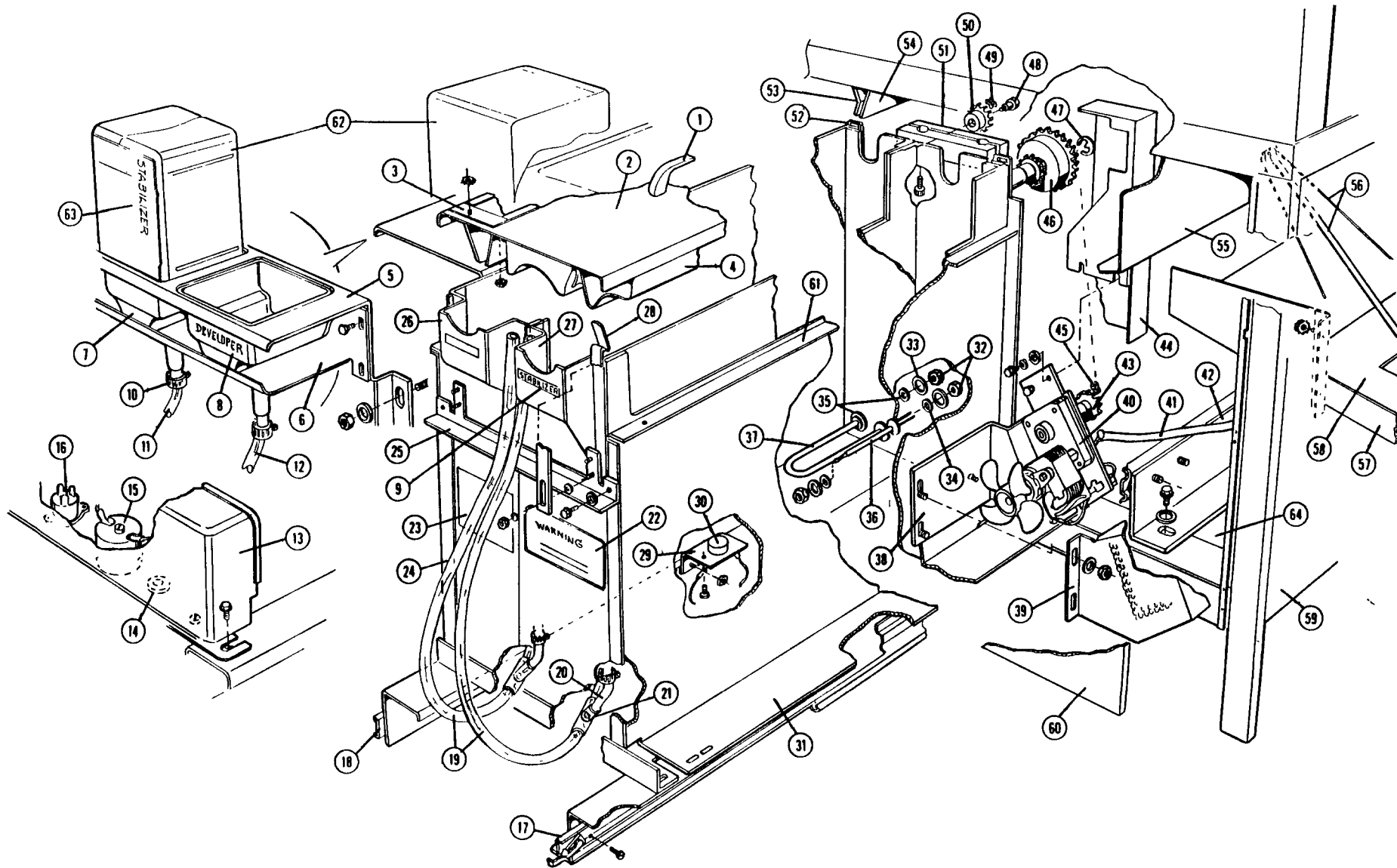
PROCESSOR ASSEMBLY



COMPLETE PROCESSOR ASSEMBLY 208025
 (Includes Items #1-52 and - Developer Roller Frame 19252609
 - Stabilizer Roller Frame 19252610)

Ref.	Description	Part No.	Qty.	Ref.	Description	Part No.	Qty.
1	Handle	19531401	1	26	Tank, Developer	19244701	1
	Screw, 10-24 x 3/8	H0685800	2	27	Tank, Stabilizer	19244601	1
2	Cover	208020	1	28	Spring	19524601	1
3	Inlet Assembly	19433201	1		Nut, 6-32	H0904000	4
	Nut, 10-32	H0904200	2		Flat Washer, #6	H0156400	4
4	Turnaround Guide Assembly	19632401	1	29	Bracket	19511801	1
	Nut, 4-40	H0144500	3		Flat Washer, #8	H0156300	2
	Flat Washer, #4	H0156500	3		Nut, 8-32	H0904100	2
	Lock Washer, #4	H0155700	3	30	Limit Control	19406901	1
5	Funnel Cover	208013	1		Scw, 8-32 x 1/4	H0684800	2
	Flat Washer, #10	H0156000	4	31	Processor Frame Assy.	208006	1
	Nut, 10-32	H0904200	4	32	Nut, 3/8 - 24	H0123100	4
6	Funnel Support	207511	1	33	Washer, Special	08910700	2
	Screw, 10-32 x 1/4	H0685000	4	34	Gasket	01351002	2
7	Funnel	20526401	2	35	Gasket	01351004	4
	Tape	40151360	19"		Cement	H0885100	A/R
8	Label, Developer	20389401	1	36	Temperature Probe	20805800	1
9	Label, Stabilizer	20389301	1	37	Heater	19503001	1
10	Hose Clamp	08327606	8	38	Bracket, Motor	208016	1
11	Hose Assy., Stabilizer	20805900	1	39	Cover, Motor	20804500	1
12	Hose Assy., Developer	208035	1		Flat Washer, #10	H0156000	3
13	Terminal Cover	20284602	1		Nut, 10-32	H0904200	3
	Screw, 8-32 x 1/2	H0684200	2	40	Motor	207885	1
14	Bushing	40142014	1		Screw, 8-32 x 1/4	H0684800	4
15	Choke	20508801	1		Flat Washer, #8	H0156300	4
	Bearing	02447900	1	41	AC Harness	207876	1
	Screw, 8-32 x 1 3/4"	H0472600	1	42	Angle	208017	2
	Nut, 8-32	H0904100	1		Screw, 8-32 x 5/16"	H0586000	12
16	Triac & Harness Assembly	20134601	1	43	Sprocket	09744562	1
	Triac Only	20118201	1		Pin, 3/32 x 1/2	H0509200	1
	Harness Only	20123901	1	44	Cover, Chain	20804400	1
	Thermal Compound	H0833700	A/R		Screw, 8-32 x 1/4	H0684800	2
17	Drawer Slide, lock side	208036	1		Flat Washer, #8	H0156300	2
18	Drawer Slide, non-lock side	208037	1	45	Chain	40144650	1
	Screw, 8-32 x 5/16"	H0586000	10	46	Sprocket, Double	19416101	1
19	Hose	40161704	17" each	47	Retainer	H0933100	1
20	Hose	40161704	1" each		Nyliner	06752400	1
21	Tee	09772100	2		Shaft	19242201	1
22	Label	20484002	1	48	Screw, Shoulder	19438101	1
23	Label	19542201	1	49	Chain	09702006	1
24	Front Plate	208014	1	50	Sprocket	09744540	1
	Screw, 8-32 x 3/8	H0684300	3	51	Guide, Chain	19616301	1
	Flat Washer, #8	H0156300	3		Bracket, Guide (not shown)	208024	1
25	Strap	208015	1		Screw, 8-32 x 7/16"	H0684300	2
	Washer, Special	09268100	2		Washer, Special	09268100	2
	Screw, 8-32 x 3/8"	H0684300	2		Screw, 8-32 x 7/16"	H0029600	2
					Nut, 8-32	H0904100	2
				52	Latch, Cover	19568301	2
					Nut, 8-32	H0904100	4
				53	Input Guide	20804700	1

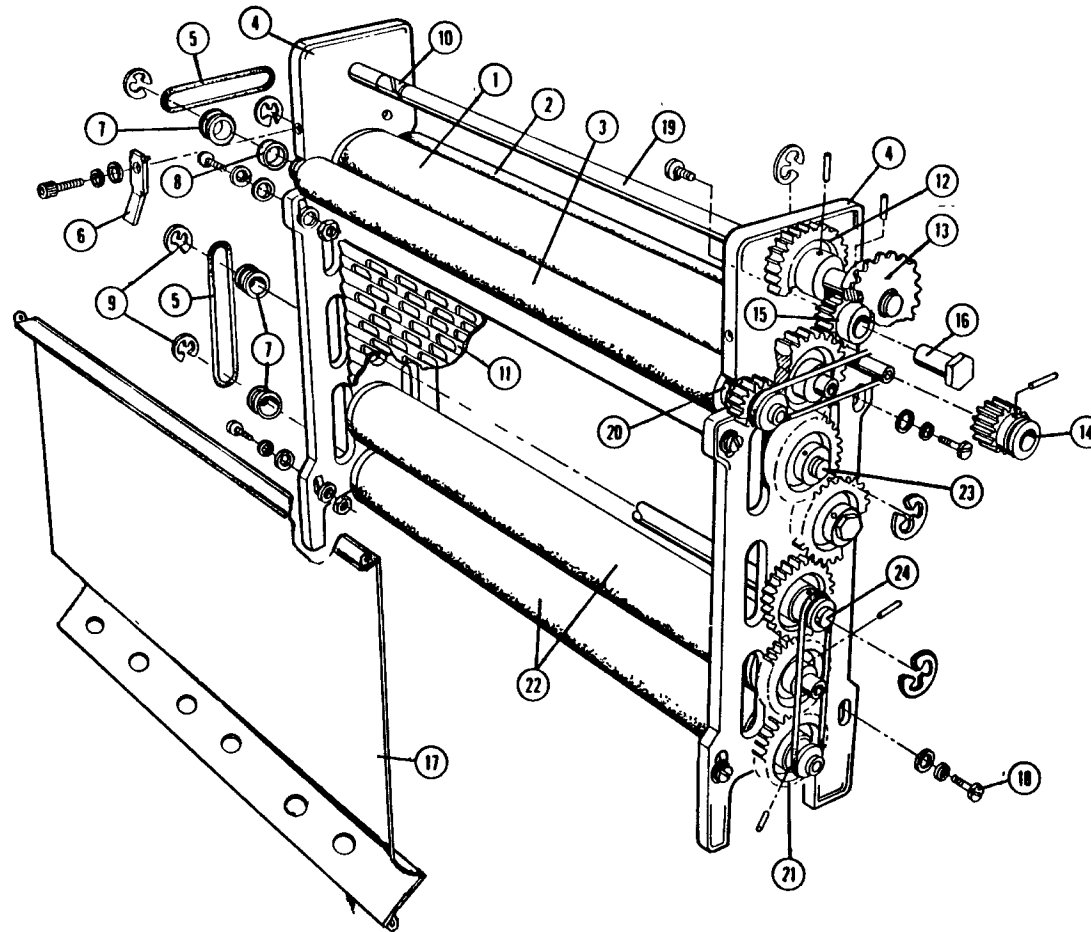
PROCESSOR ASSEMBLY



COMPLETE PROCESSOR ASSEMBLY 208025
 (Includes Items #1-52 and - Developer Roller Frame 19252609
 - Stabilizer Roler Frame 19252610)

Ref.	Description	Part No.	Qty.
---	-----	-----	---
54	Input Guide	208023	1
55	Light Shield	20804600	1
	Nut, 10-32	H0904200	2
56	Guide Assembly Complete	20805400	1
	Hinge	19112501	1
	Center Guide	20805500	1
	Wire Guide	20805600	1
	Nut, 6-32	H0904000	2
57	Print Catcher Assy. Complete	20804300	1
	Print Catcher Tray	20804100	1
	Angle	20804200	2
	Nut, 10-32	H0904200	4
58	Plate Tray Liner	20806100	1
59	Rear Panel	208022	1
60	Door, Processor	208004	1
61	Angle	20806000	1
	Screw	H0683700	2
62	Bottle	06749400	2
63	Label, Stabilizer	20499601	1
	Label, Developer	20499501	1
	Feeder Valve	19826201	2
64	Drip Tray	19265401	1

24
ROLLER FRAMES

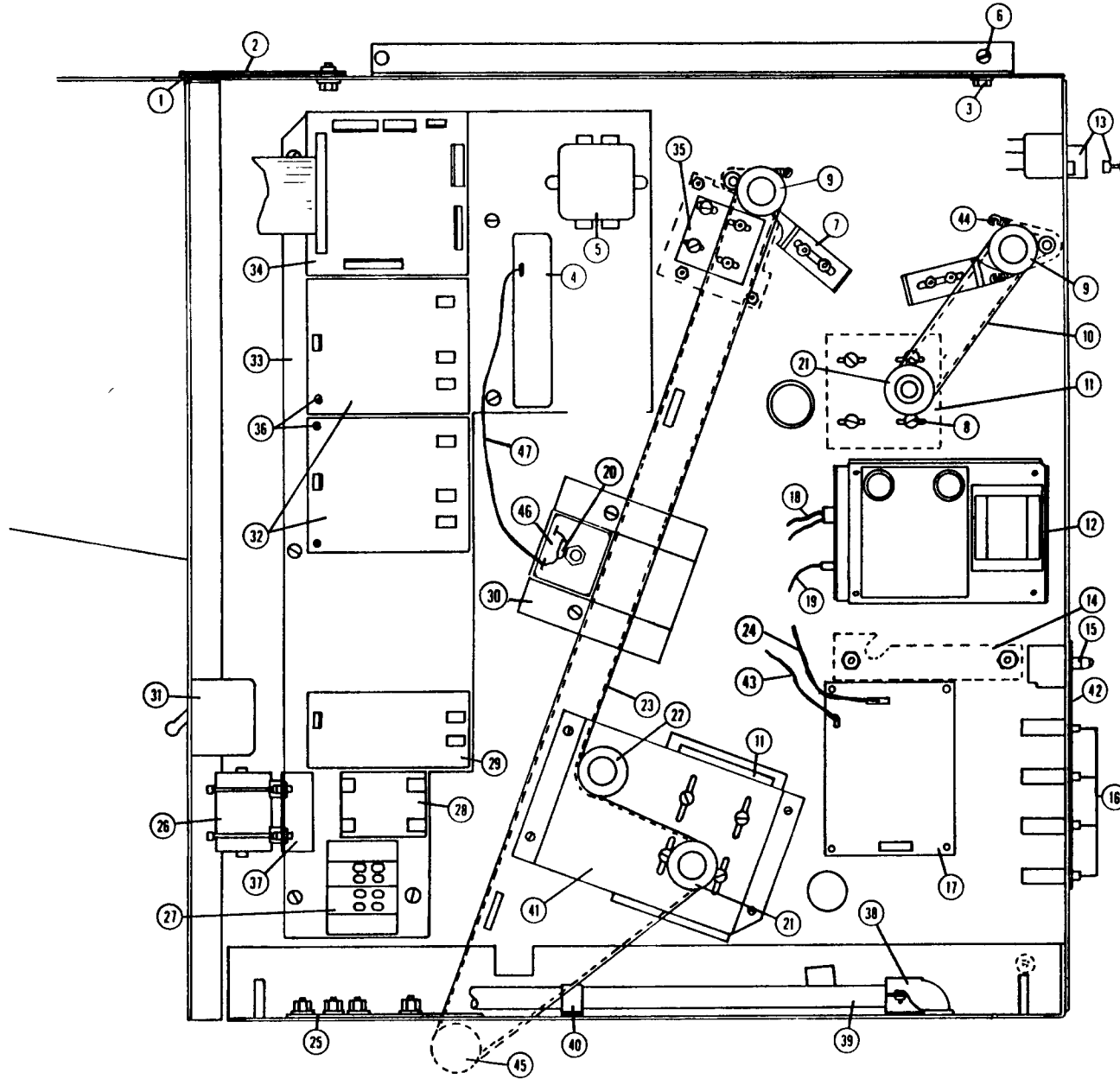


ROLLER FRAMES

Developer 19252609
Stabilizer 19252610

Ref.	Description	Part No.	Qty.	Ref.	Description	Part No.	Qty.
	DEVELOPER ROLLER FRAME	19252609	1	17	Side Guide - Input/Exit	20806300	2
1	Large Rubber Roller	20307301	1	18	Screw, 6-32 x 3/4	H0683900	4
2	Small Rubber Roller	19259501	1		Flat Washer, #6	H0156400	4
3	Small Rubber Roller	19259501	1		Lock Washer, #6	H0155000	4
	STABILIZER ROLLER FRAME	19252610	1	19	Nut, 6-32	H0144100	4
1	Large Rubber Roller	20307301	1		Top Shaft	19547701	2
2	Small Rubber Roller	19259501	1	20	Bearing, Developer R/F	19265102	2
3	Small Plastic Roller	19247901	1		Bearing Stabilizer R/F	19265102	1
4	Bearing Plate	19293601	2	21	Gear, 30T	19246801	2
5	Drive Belt	09729507	4		Spiral Pin, 3/32 x 5/8"	H0507500	2
6	Clip, Developer R/F	19718901	4	22	Rollers, Plastic	19300202	2
	Clip, Stabilizer	19718901	4	23	Shaft, Top Inner	19245601	1
	Lock Washer, #8	H0155100	2	24	Shaft, Bottom Inner	19246001	1
	Flat Washer, #8	H0156300	2				
7	Pulley, Developer R/F	19242801	4				
	Pulley, Stabilizer Wash R/F	19242801	3				
8	Bearing, Developer R/F	19265101	2				
	Bearing, Stabilizer, R/F	19265101	1				
9	Retaining Ring	H0933000	8				
10	Bearing	40141118	2				
11	Inner Guide	20529001	2				
12	Gear, 30T	19246901	5				
	Spiral Pin, 3/32 x 3/4"	H0509300	5				
13	Sprocket	09744583	1				
	Spiral Pin, 3/32 x 3/4"	H0509300	1				
14	Gear, 16T	19246701	2				
	Spiral Pin, 3/32 x 5/8"	H0507500	2				
15	Gear, 16T	19243601	1				
16	Idler Stud	19242701	2				
	Screw, 10-32 x 7/16"	H0465300	2				
	Lock Washer, #10	H0154500	2				
	Loctite Primer	H0882300					
	Loctite Adhesive	H0880900					

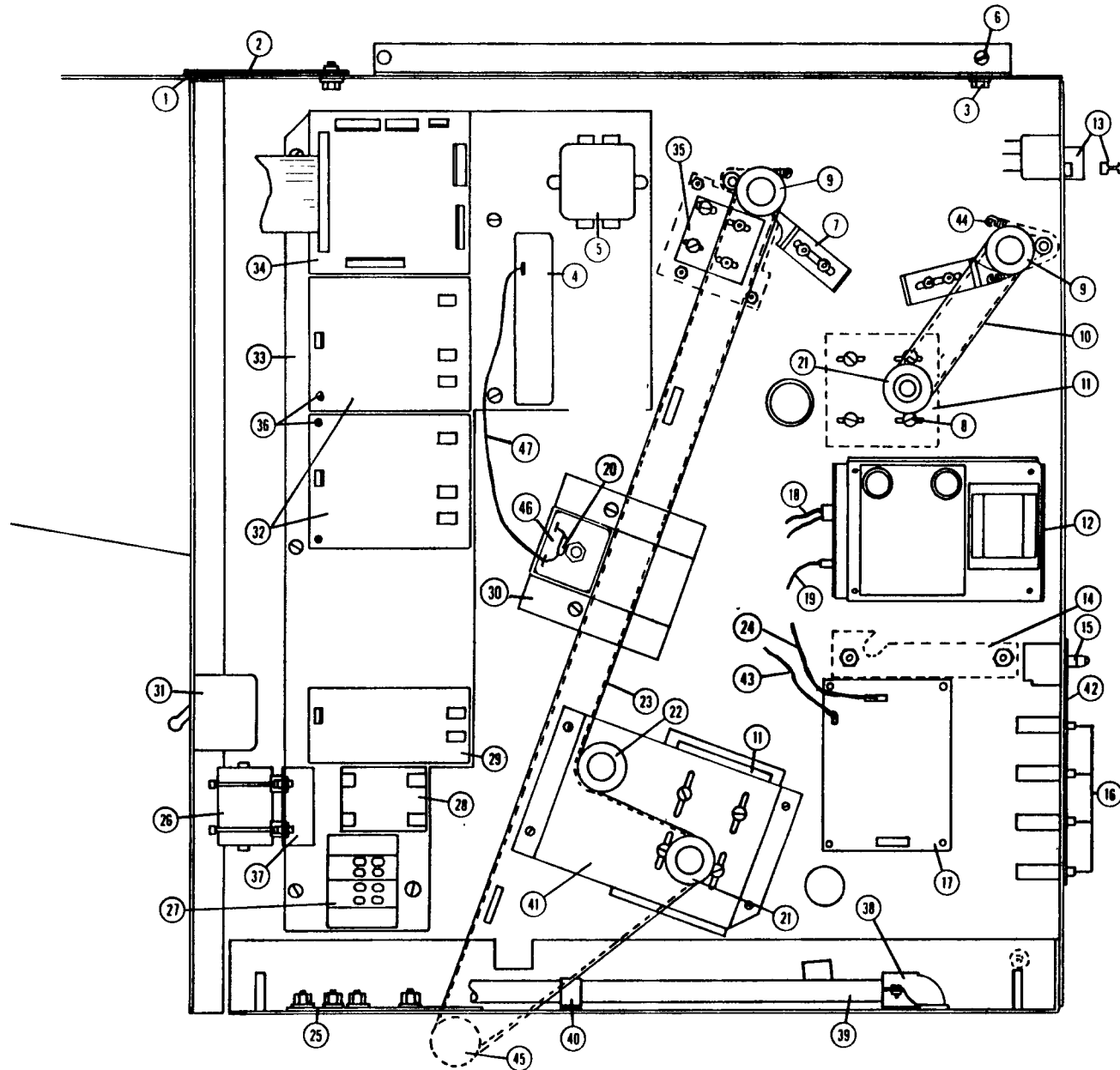
LATCH SIDE PLATE ASSEMBLY



LATCH SIDE PLATE ASSEMBLY 20352502

Ref.	Description	Part No.	Qty.	Ref.	Description	Part No.	Qty.
1	Spacer	20046901	1	12	Power Supply	20315901	1
2	Retaining Plate	20046801	1		Screw, 6-32 x 1/2	H0014000	4
	Lock Washer, #10	H0155100	2	13	Switch, interlock	20286901	2
	Flat Washer, #10	H0156000	2		Switch, cheater	20323301	A/R
	Screw, 10-32 x 5/8"	H0483100	2	14	Bearing, Paper Roll	20292301	4
3	Screw, 8-23 x 3/8"	H0482500	2		Screw, 8-32 x 5/8	H0472300	4
	Lock Washer, #8	H0155100	2		Flat Washer, #8	H0156300	4
	Flat Washer, #8	H0156300	2		Lock Washer, #8	H0155100	4
4	Terminal Block	03692109	1	15	Push Button Switch	20128501	1
	Nut, 8-32	H0144200	2		Arc Suppressor	20156902	1
	Flat Washer, #8	H0156300	2	16	Circuit Breaker	40121703	4
	Lock Washer, #8	H0158400	2		Retaining Clip	20426301	1
5	RFI Filter	40123950	1	17	Dual Temperature Control PCB	20616901	1
	Nut, 8-32	H0123200	2		Standoff	20303501	1
	Flat Washer, #8	H0156300	2		Screw, 6-32 x 7/16	H0036400	4
	Lock Washer, #8	H0158400	2	18	DC Harness	20320401	1
6	Screw, 8-32 x 1/2	H0472200	4	19	AC Harness	20320501	1
	Flat Washer, #8	H0156300	4	20	Capacitor Assy.	207026	1
	Lock Washer, #8	H0155100	4	21	Pulley	20096101	2
7	Bracket	19875601	2		Pin, 3/32 x 5/8	H0507700	2
	Screw, 8-32 x 1/4	H0471900	4	22	Pulley	20096301	1
	Lock Washer, #8	H0155100	4		Shoulder Screw, 1/4 20 x 1	H0164200	1
	Flat Washer, #8	H0156300	4		Nylon Washer, 1/4	H0188700	2
8	Screw, 8-32 x 5/16	H0586000	4		Flat Washer, 1/4	H0156200	1
	Flat Washer, #8	H0156300	4		Lock Washer, 1/4	H0155300	1
	Lock Washer, #8	H0155100	4		Nut, 1/4-20	H0144300	1
9	Pulley	19349801	2	23	Belt	20096001	1
	Set Screw, 8-32 x 1/4	H0113400		24	Harness D.C.	20190201	1
10	Belt	20095901		25	Ground Strap Assembly	20140101	1
11	Motor	09096201	2		Flat Washer, #10	H0156000	6
	Screw, 8-32 x 5/16	H0586000	4		Lock Washer, #10	H0155200	6
	Flat Washer, #8	H0156300	4		Nut, 10-32	H0144400	6
	Lock Washer, #8	H0155100	4	26	Choke Assembly	20099701	1
					Wire Tie	E0230800	2
					Tie Base	20213201	1

28
LATCH SIDE PLATE ASSEMBLY



LATCH SIDE PLATE ASSEMBLY 20352502

Ref.	Description	Part No.	Qty.	Ref.	Description	Part No.	Qty.
27	Terminal Block	19792402	1	41	Transport Motor Bracket	20289501	1
	Flat Washer, #8	H0156300	2		Screw, 8-32 x 3/8	H0482500	4
	Nut, 8-32	H0904100	2		Flat Washer, #8	H0156300	4
28	Lamp Relay	19704101	1		Lock Washer, #8	H0155100	4
	Flat Washer, #8	H0156300	2		Nut, 8-32	H0144200	4
	Nut, 8-32	H0904100	2	42	Label	20202401	1
29	Shutter PCB	20113101	1	43	Cable, Thermistor	207001	1
30	Guard	20448601	1	44	Spring	09572400	2
	Screw, 8-32 x 1/4	H0471900	2	45	Pulley	20096101	1
	Lock Washer, #8	H0155100	2		Pin, 3/32 x 5/8	H0507700	1
31	Circuit Breaker	09346500	1	46	Time Delay Module	20472002	1
	Nut, 8-32	H0144200	2		Nut, 10-32	H0904200	1
	Flat Washer, #8	H0156300	2	47	Wire Assembly	20448501	1
	Lock Washer, #8	H0155100	2				
32	Triac BCB	19960709	2				
33	Electrical Panel Complete	20257302	1				
	Screw, 8-32 x 3/16	H0582600	1				
	Lock Washer, #8	H0155100	8				
34	Interconnect PCB	20600701	1				
35	Side Guide Bracket	20367902	1				
	Nut, 4-40	H0144500	3				
	Lock Washer, #4	H0155700	3				
	Flat Washer, #4	H0156500	3				
36	Standoff	20293401	16				
37	Choke Bracket	20220802	1				
	Screw, 8-32 x 5/16	H0586000	2				
	Nut, 8-32	H0144200	2				
	Lock Washer, #8	H0154600	2				
38	Connector, Elbow	08703602	1				
39	Power Cable Assy.	05852113	1				
40	Cable Clamp	40143809	1				
	Screw, 8-32 x 3/8	H0472100	1				