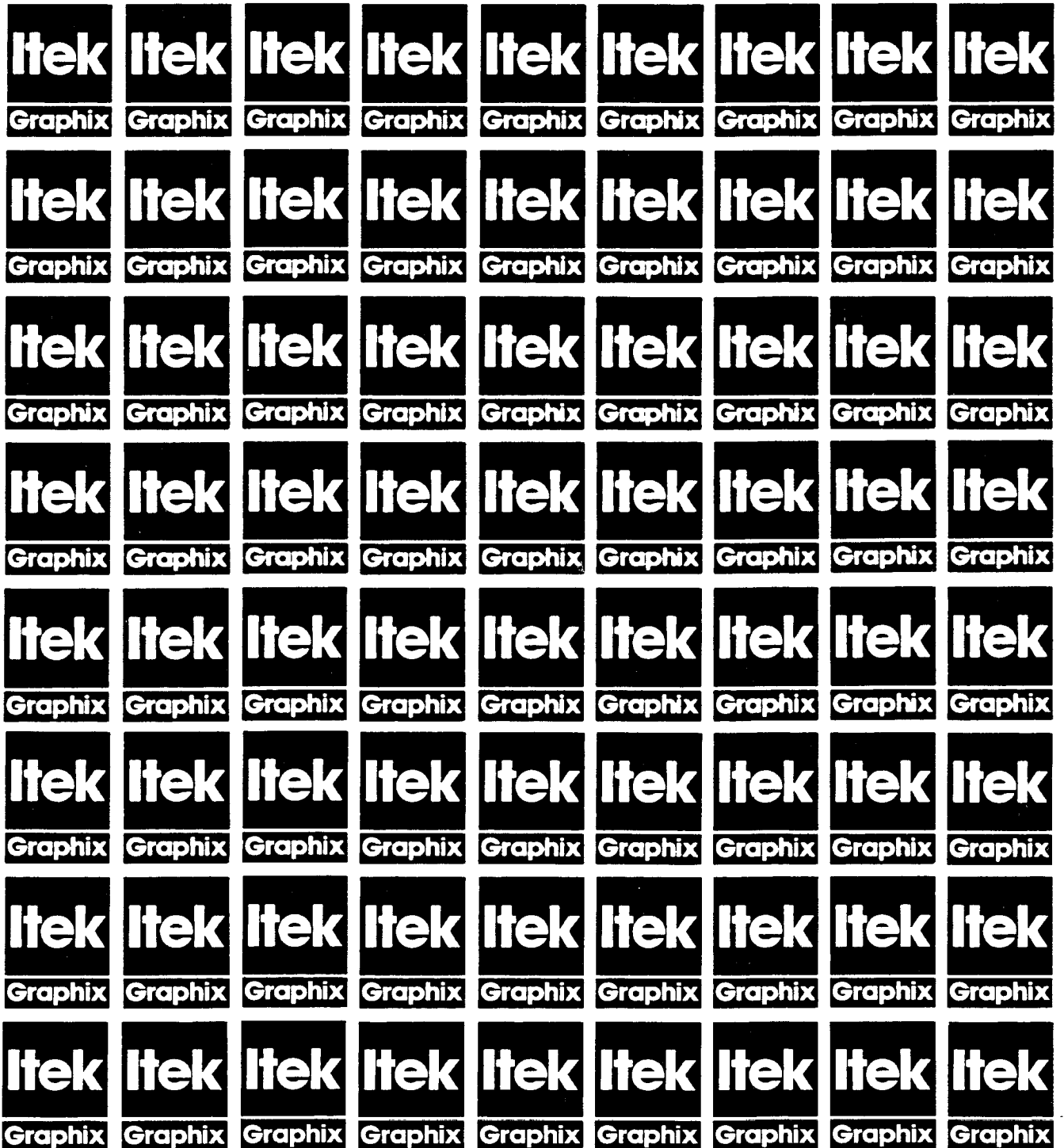


**Itek Graphix**

Parts Manual

**617S**

**Platemaker**



1

2

3

COPYRIGHT 1990 A.B. DICK/ITEK GRAPHIX. All rights reserved. This manual may not be duplicated, reproduced, or transmitted (in whole or in part) in any form or by any means, electronic or mechanical, (including without limitation photocopy, facsimile, recording or any information storage and retrieval system) without the prior written consent of A. B. Dick/Itek Graphix.

DISCLAIMER OF WARRANTIES (EXPRESS OR IMPLIED). While due care has been taken in the preparation of this manual, A.B Dick/Itek Graphix. makes no representation or warranties with respect of the adequacy or accuracy hereof and specifically disclaims any implied warranties of merchantability or fitness for any particular purpose. Further, A.B. Dick/Itek Graphix reserves the right to revise this publication and to make changes (both substantial and insubstantial in nature) in the contents hereof from time to time hereafter without obligation of A.B. Dick/Itek Graphix to notify any person or organization of such revisions or changes.

SAFETY WARNING. Safety devices have been installed as original equipment for your protection and safety. The removal, disconnection or alteration of any safety guard, protective cover, safety interlock or other safety or protective device comprising part of the equipment described herein poses an undue safety hazard and the same is strictly prohibited.

DISCLAIMER OF LIABILITY. A. B. Dick/Itek Graphix disclaims any responsibility or liability for personal injury, death or property damage caused by or arising out of (i) the removal, disconnection or alteration of any safety guard, protective cover, safety interlock or other safety or protective device comprising part of the equipment described herein, or (ii) the failure of the person or persons operating the equipment described herein or servicing procedures and warnings contained herein.

RECOMMENDED TECHNICAL TRAINING. The information herein is designed only to supplement a formalized training program for skilled service technicians who already possess full knowledge of general electrical and mechanical safety procedures. This document is not intended to be a guide for "do it yourself" repair of the subject equipment by anyone who has not successfully completed a formal technical training course on the subject equipment. Users of this document are advised that A.B. Dick/Itek Graphix shall not be liable for any personal injury or property damage arising out of the use of this document by untrained persons.

This equipment complies with the requirements in Part 15 of FCC Rules for a Class A computing device. Operation of this equipment in a residential area may cause unacceptable interference to radio and TV reception requiring the operator to take whatever steps are necessary to correct the interference.



## SAFETY FIRST

Safety can never be over emphasized. In the performance of your day-to-day duties as a Technical Representative, the potential of serious injury is ever present. To reduce the possibility of accidental injury a few safety procedures must be observed when working on any type of equipment.

### 1. PREPARE YOURSELF

Personal safety is a correct mental and physical attitude. Think before you act. Tuck in your tie, roll up your shirt sleeves and remove watches and/or rings.

### 2. REMOVE POWER

If at all possible, troubleshooting should be accomplished with the machine de-energized. If this is not possible, observations should be made from a distance that insures 100% personal safety. By all means, no adjustments or repairs should be attempted while the machine is running.

### 3. STATIC SAFETY

Static can damage components. Never handle new or defective control boards outside anti-static shipping bag unless grounded wrist strap is worn.

Never store or ship new or defective control boards near strong electrostatic, electromagnetic, magnetic or radioactive fields.

Wrist strap can be ordered by TK077300 number.

### 4. TAKING ELECTRICAL READINGS

Due to the amount of electrical components in this machine, electrical troubleshooting, by means of taking voltage readings, may be necessary from time to time. Meter leads should be connected (by means of alligator clips if necessary) after the power plug has been removed from the socket. Return power to this machine in order to take your readings.

### 5. PROTECT YOUR EYES

The driving of large shear pins can cause flying chips of metal from the hammer or the pin punch. The use of an electric drill can be equally as dangerous. Wear safety glasses while performing tasks of this nature.

### 6. NEVER PLACE TOOLS OR PARTS IN A MACHINE

If you violate this rule long enough, you can be assured of damaging a customer's machine.

7. REPLACE ALL COVERS ON THE MACHINE  
They are provided to protect the operator from injury.

8. PLAY IT SAFE!!!

- WARNING -

PRIOR TO PERFORMING SERVICE ON THIS UNIT

REMOVE POWER PLUG FROM WALL

PARTS SECTION

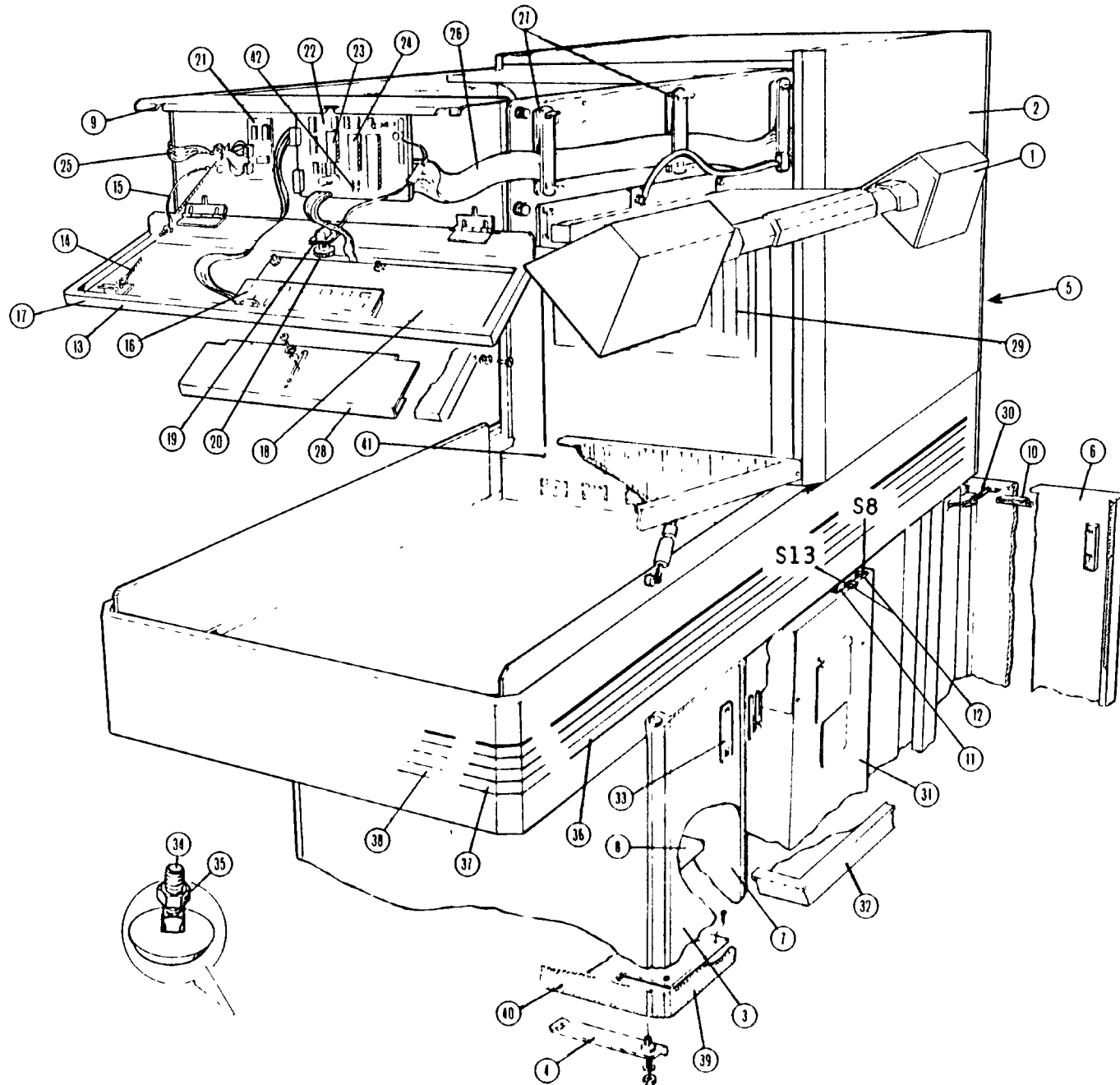
Machine Complete .....	2
Copyboard Assembly .....	4
Moveable Lamps .....	8
Supply and Knife Area .....	10
Lens Carrier .....	14
Optics .....	16
Focal Plane and Supply Box .....	18
Side Guides .....	20
Processor .....	22
Center Squeegee Rollers .....	24
Roller Racks .....	26
Plate Assembly, Latch Side (L. S.) .....	28
Accessories .....	31
. Backlighted Copyboard .....	32
. Dryer Assembly .....	34
. 110 Volt Power Pack Kit .....	38
. Vacuum Copyboard .....	40





PARTS

MACHINE COMPLETE



MACHINE COMPLETE

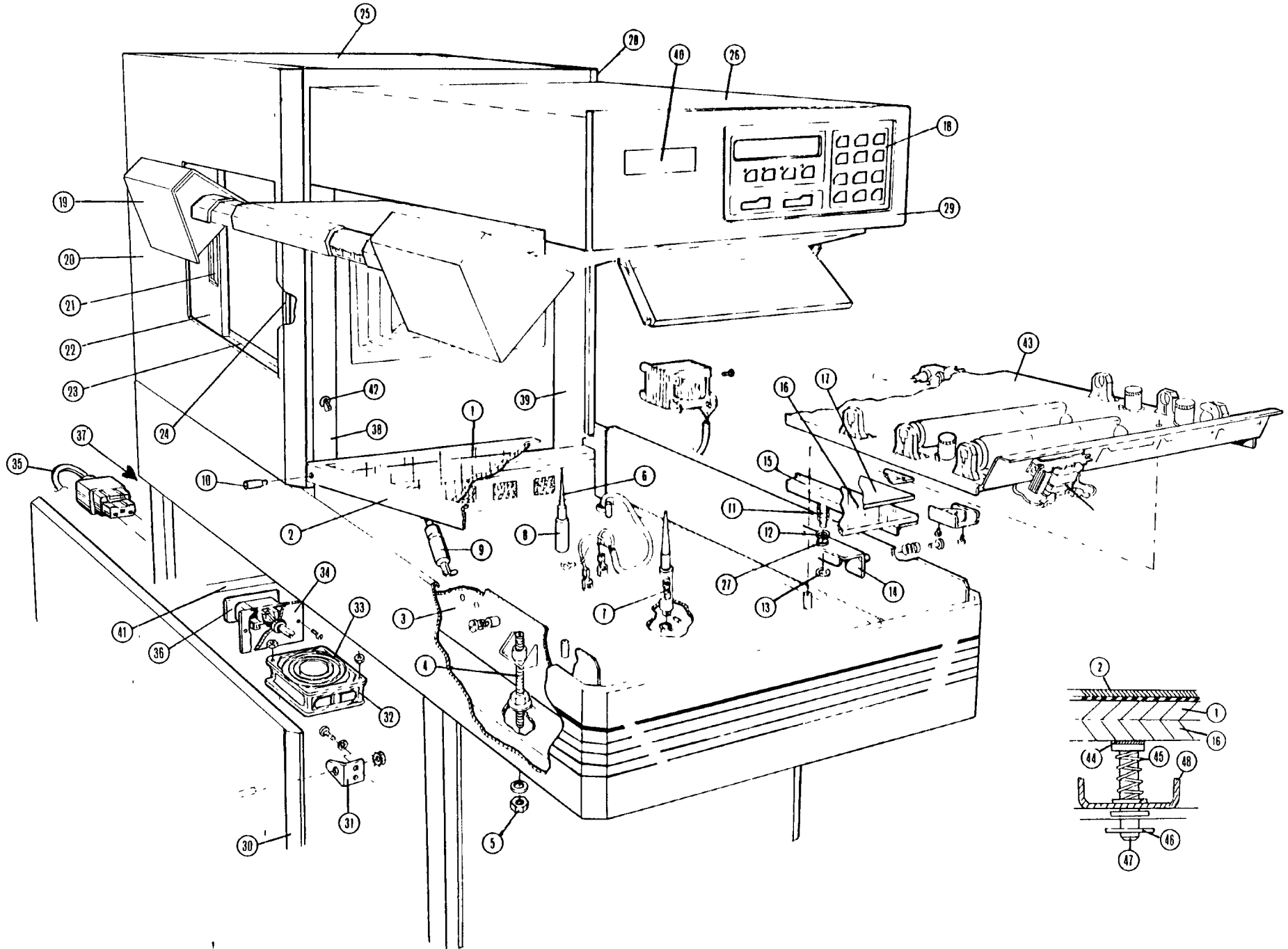
REF.	DESCRIPTION	PART NO.	QTY.
1	Lamp Assembly L.S. (shown)	20910000	1
	Screw, 10-32 x 3/8"	H6878	4
	Lamp Assembly H.S.	20909900	1
	Screw, 10-32 x 3/8"	H6878	4
2	Cover, H.S.	20927700	1
	Screw, 8-32 x 3/8"	H6843	2
3	Door, front	20921700	1
4	Hinge Pin Support	20923900	2
	Pin	20926300	2
	Nut, 10-32	H9042	2
	Bearing	02488000	4
	Cap Screw, 10-32 x 1/2"	H2739	4
5	Door, rear	20922000	1
6	Door, processor, rear	20921800	1
7	Center Wall	20924200	1
	Screw, 8-32 x 3/8"	H6843	2
	Lock Washer, #8	H1551	2
	Flat Washer, #8	H1563	2
	Nut, 8-32	H9041	3
8	Shelf	20925200	1
	Nut, 8-32	H9041	6
9	Front Plate	20931600	1
	Screw, 1/4-20 x	H6874	4
	Flat Washer, 1/4	H1903	4
10	Switch Actuator		
	for exposed switches	20936300	1
	for concealed switches	21053800	1
	Nut, 8-32	H9041	2
	Flat Washer, #8	H1563	2
11	Switch Bracket		
	for exposed switches	20936400	1
	for concealed switches	21053700	1
	Screw, 8-32 x 3/8"	H6843	2
	Lock Washer, #8	H1551	2
	Flat Washer, #8	H1563	2
	Switch Cheater	21072400	A/R
12	Interlock Switch	20286901	2
13	Display Panel Assembly	20922100	1
	(Items 14-20)		
	Nut, 8-32	H9041	2
14	Cable	20313602	1
	Nut, 10-32	H9042	2
15	Ground Strap	20941200	1
	Nut, 8-32	H9041	1
	Nut, 10-32	H9042	1

\*CAUTION: Replace the lithium battery backed IC with the same or equivalent type recommended by the manufacturer. Dispose of used ICs according to the manufacturer's instructions and/or location regulations.

REF.	DESCRIPTION	PART NO.	QTY.
16	L.C. Display PCB w/hardware	21041800	1
17	Display Panel Weldment (accessible pot.)	20937200	1
	Display Panel Weldment (non-accessible pot.)	20937201	1
	Nut, 8-32	H9041	2
18	Membrane Switch Assembly	20848700	1
	Nut, 8-32	H9041	6
	Membrane Switch Only	20781500	1
19	Potentiometer	20551101	1
20	Knob	20039001	1
21	Display, I.O. PCB	20809700	1
	Standoff	20293401	4
22	CPU PCB (accessible pot.)	20374502	1
	CPU PCB (non-accessible pot.)	20374501	1
	Standoff	20293401	4
*23	Battery Backed RAM	40115502	1
24	Prom, English	20971200	1
25	D.C. Harness	20934600	1
26	D.C. Harness	20933700	1
27	Cable Clamp	20111101	3
28	Light Shield	20178801	1
	Screw, 6-32 x 1/4"	H4701	1
	Flat Washer, #10	H1475	1
	Wave Washer, 3/16"	H1578	1
	Flat Washer, #8	H1474	1
29	Bellows	20113002	1
	Screw, 6-32 x 1/4"	H4701	8
30	Cable Restraint	20313604	1
	Screw, 8-32 x 3/8"	H6843	1
	Nut, 10-32	H9042	1
31	Processor Assembly Complete	20909500	1
32	Drip Pan	207317	1
33	Pull	20881200	2
34	Foot	20264401	4
35	Nut, 1/2"-13	H1255	4
36	Stripe Decal, side, 56 7/8"	20940902	2
37	Stripe Decal, corner, 6 5/16"	20940800	4
38	Stripe Decal, end, 22 1/4"	20940901	2
39	Toe Kick Decal, side, 46 1/4"	20941102	2
40	Toe Kick Decal, end, 24 7/8"	20941101	2
41	Angle Assembly	20178701	1
42	Shunt	20142201	4
NS	Step & Repeat Scale	20911600	A/R
NS	Drain Bucket	20252401	
NS	Grey Scale	TK053600	

Legend: L.S. - Latch Side of machine as it relates to the material compartment door, also right side.  
H.S. - Hinge Side of machine as it relates to the material compartment door, also left side.  
Front - copyboard end of unit.  
Rear - delivery end of unit.

COPYBOARD ASSEMBLY 209302



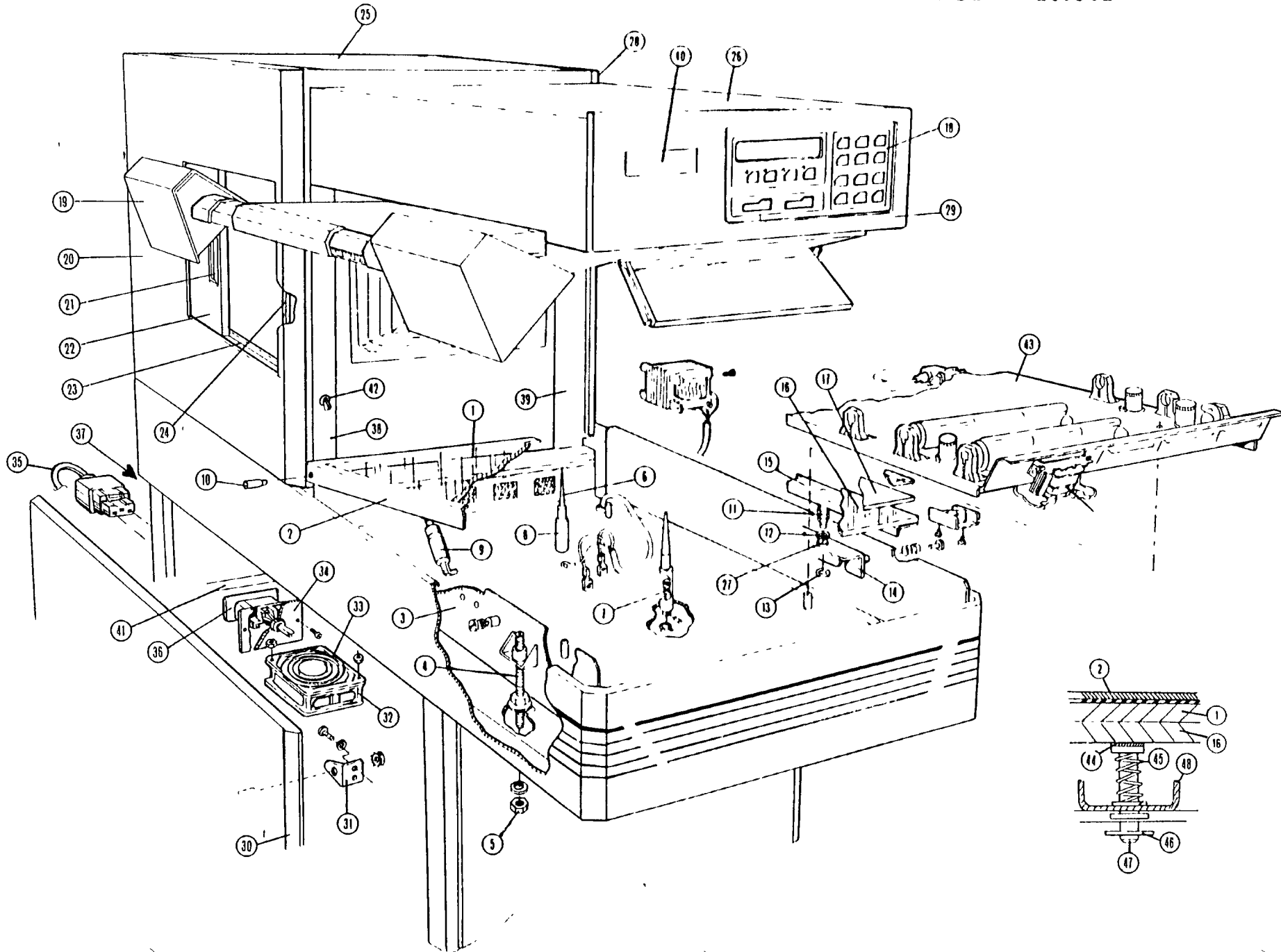
COPYBOARD ASSEMBLY 209302

REF.	DESCRIPTION	PART NO.	QTY.
1	Glass, cover	20097702	1
2	Copyboard Cover Weldment	20922300	1
	Tape, double sided adhesive	40151356	A/R
3	Lamp Box	20922400	1
4	Screw, adjusting with nut	20922900	4
	Screw only	20956300	4
5	Nut, flanged 5/16-18	H7269	4
	Flat Washer, 5/16"	H1566	4
6	Chart Support	19496801	2
7	Spring	19315301	2
8	Hub	20931500	2
	Pin, 3/32 x 1/2"	H5076	2
	Retaining Ring, 1/2"	H9290	2
9	Counterbalance	20143402	2
	Retaining Ring, 1/4"	H9331	2
10	Hinge Pin	20153401	2
	Set Screw, 8-32 x 1/4"	H1134	2
	Hinge Repair Kit	20447002	A/R
	. Bearing Hub	21184600	A/R
	. Collar	21189100	A/R
	. Set Screw	H1156	A/R
	. Nut	H1255	A/R
11	Spring	20125901	4
12	Flat Washer, 17/64"	H1901	4
13	Retaining Ring, 1/4"	H9331	4
14	Spring Support, L.S. (shown)	20940400	1
	Spring Support, H.S. (not shown)	20940600	1
15	Platen Spring Support	20940200	2
16	Platen Glass	20097803	1
	Adhesive	40143535	A/R
	Adhesive activator	40143536	A/R
17	Chart, English/metric	20126901	1
	Step & Repeat Scale Decal	20911600	1
	Tape, doublesided	40151322	A/R
18	Membrane Switch Assembly	20848700	1
19	Lamp Assembly H.S. (shown)	20909900	1
	Lamp Assembly L.S. (not shown)	20910000	1
20	Cover Assy. H.S.(with side door)	20930400	1
	Cover Only	20921300	1

Legend: L.S. - Latch Side of machine  
as it relates to the material  
compartment door, also right side.  
H.S. - Hinge Side of machine as  
it relates to the material  
compartment door, also left side.  
Front - copyboard end of unit.  
Rear - delivery end of unit.

REF.	DESCRIPTION	PART NO.	QTY.
21	Pull	20881200	1
22	Side Door	20927800	1
23	Door Track	20927700	2
	Tape	40151321	A/R
	Nut, 8-32	H9041	6
24	Magnetic Strip	19806404	A/R
25	Top Sliding Cover	20927400	1
	Felt	40151373	A/R
26	Overhang Cover	20928500	1
27	Nyliner	06754703	4
28	Side Cover, L.S.	20927200	1
29	Display Panel Assy. Complete	20922100	1
30	Panel, H.S.	20923200	1
31	Bracket	20936000	4
	Lock Washer, #10	H1552	8
	Screw, 10-32 x 3/8"	H6851	8
	Flat Washer, #10	H1560	8
32	Fan	20290001	1
	Nut, 6-32	H9040	4
33	Fan Guard	19817501	1
	Screw, 6-32 x 5/16"	H4702	4
	Nut, 6-32	H9040	4
	Flat Washer	H1564	4
34	Cover Plate Connector	20925100	1
	Cover Plate Connector (with 3/4" hole)	20925101	1
	Bushing, strain relief (right angle)	40128309	1
	Screw, 8-32 x 3/8"	H6843	2
35	Line Cord Assembly, 220 volt	20954000	1
	Connector, female	20935700	1
	Plug, male	20935800	1
36	220V Power Cable/Receptacle	20933000	1
	Receptacle only	20930100	1
37	Rear Panel	20921500	1
	Nut, 10-32	H9042	2
	Plate Chute	20009002	1
	Nut, 10-32	H9042	4
38	Side Cover H.S.	20926700	1
39	Side Cover, L.S.	20926800	1
40	Stripe Decal, 6175	20930700	A/R
	Stripe Decal, 180S	20932100	A/R
41	Angle, Rear Panel Mount	20925300	1
42	Circuit Breaker, 220V 16 AMP (S/N 1810 & Below)	19598203	1
	Circuit Breaker, 220V, 15 AMP (S/N 1811 & Above)	19598206	
	Circuit Breaker, 110V	19598204	A/R
	Label, Breaker	21051001	1

## COPYBOARD ASSEMBLY 209302

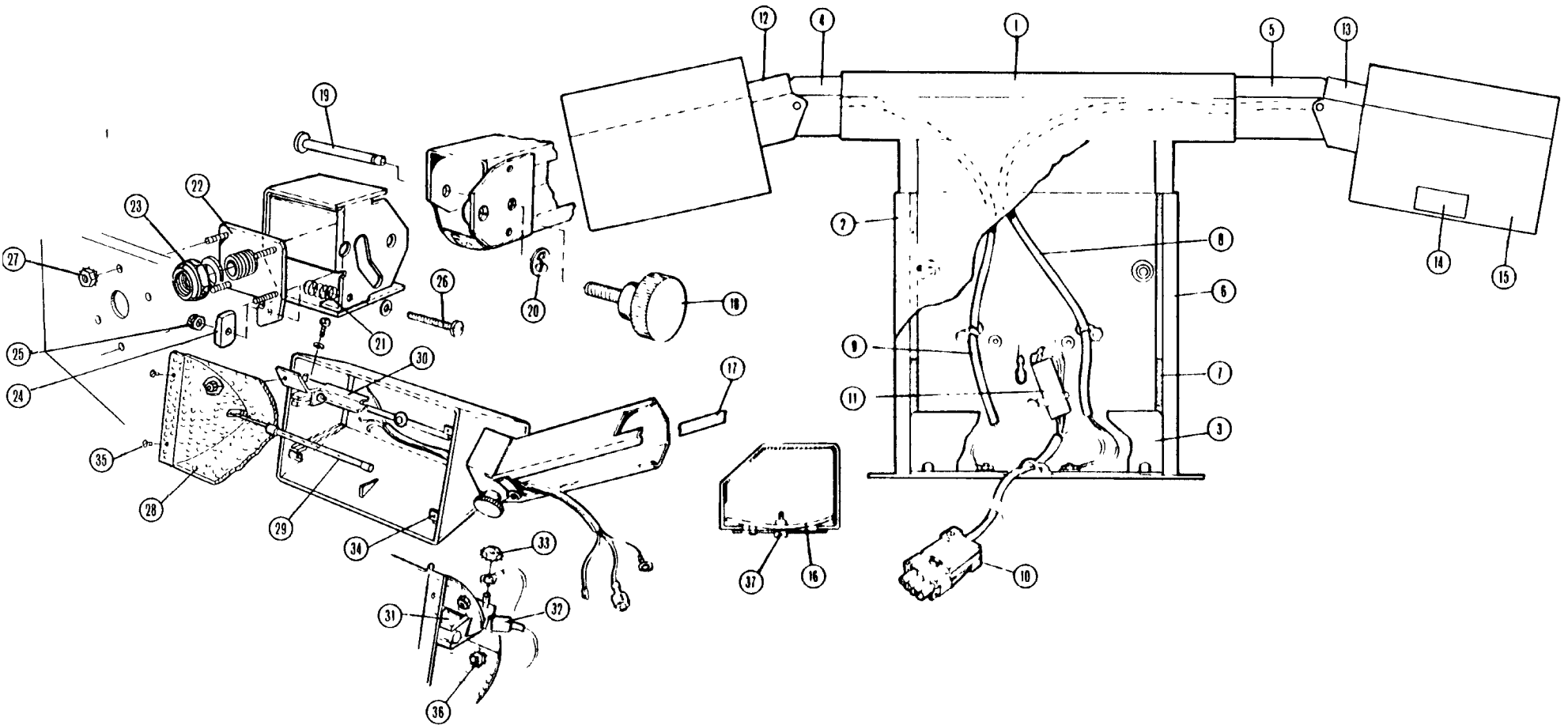


COPYBOARD ASSEMBLY

REF.	DESCRIPTION	PART NO.	QTY.
43	60Hz Backlight Kit (Optional)	21022603	A/R
	50Hz Backlight Kit (Optional)	21022602	A/R
44	Thumb Screw Knob (S/N 1450 & Above)	20050203	2
45	Spring (S/N 1450 & Above)	40149607	2
46	Flexlok Nut (S/N 1450 & Above)	H9065	2
47	Cap Screw (S/N 1450 & Above)	H3210	2
48	Copyboard Frame Weldment	21113600	1

Detailed parts list of Item #43  
is found in Accessories Section

MOVEABLE LAMP ASSY. (L.S.) 20909900 (Shown)  
MOVEABLE LAMP ASSY. (H.S.) 20910000 (Not Shown)





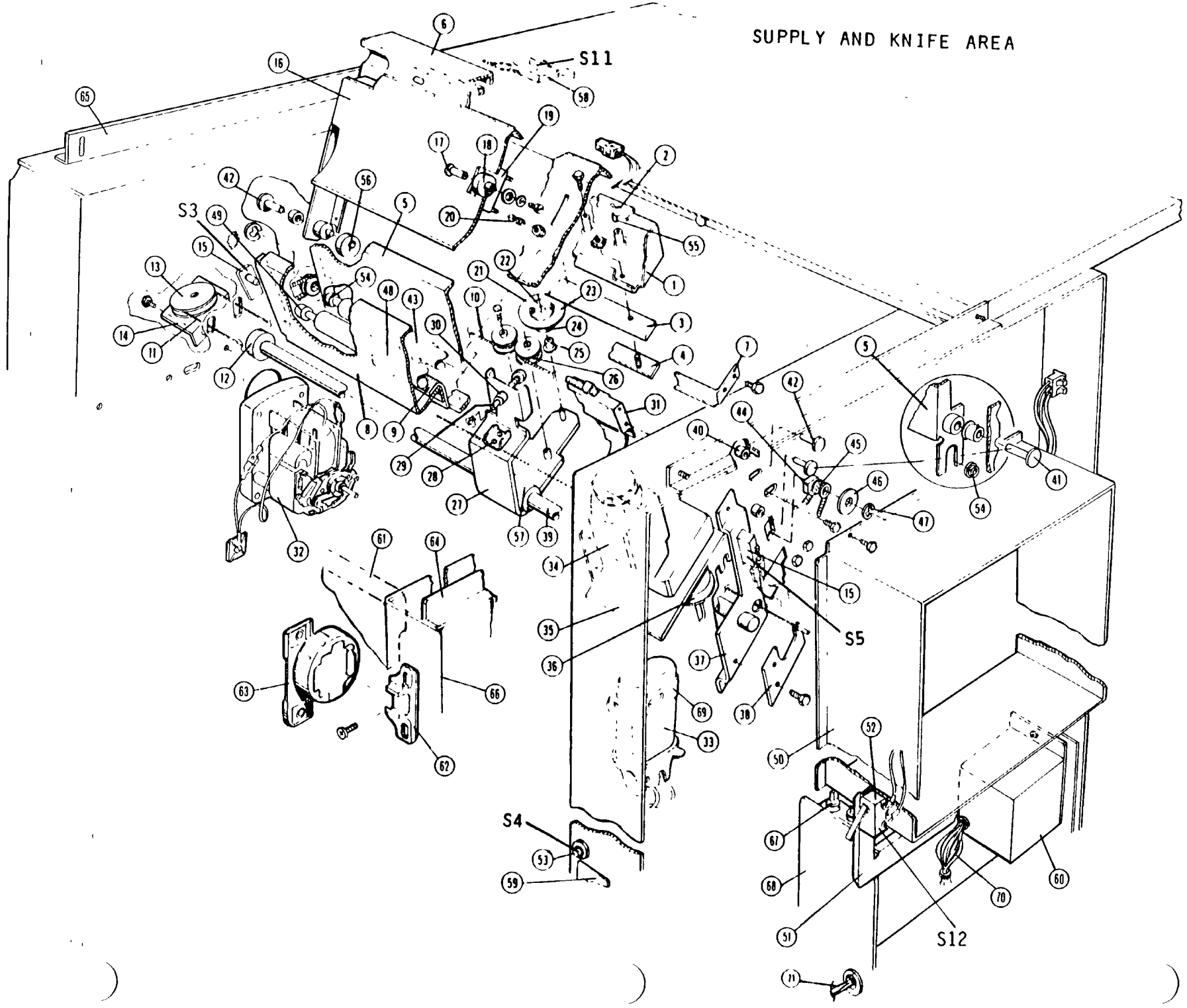
MOVEABLE LAMP ASSY. (L.S.) 20909900 (Shown)  
 MOVEABLE LAMP ASSY. (H.S.) 20910000 (Not Shown)

REF.	DESCRIPTION	PART NO.	QTY.
1	Mounting Plate Weldment	20910500	2
	Screw, thread forming	H6878	8
2	Cover, Lamp Assy.	20447301	2
3	Cover, Inner Angle	20605101	2
4	Extension Weldment Rear, L.S.	20911000	1
	Extension Weldment Rear, H.S.	20911200	1
5	Extension Weldment Front, L.S.	20862100	1
	Extension Weldment Front, H.S.	20862400	1
6	Outer Arm Weldment	20910800	2
7	Tape, Teflon, 2" wide	40151392	A/R
8	Cable, Rear Lamp Pod	20934100	2
9	Cable, Front Lamp Pod	20933500	2
10	Harness, Lamp Feed	20934500	2
	Tie Base	09779700	A/R
	Wire Tie	F0230700	A/R
	Nut, 8-32 w/Lock Washer	H9041	A/R
	Nut, 6-32 w/Lock Washer	H9040	A/R
	Pushbutton Cable Tie Mount	20133301	A/R
11	Common Block	19166701	2
12	Pivot Arm Weldment Rear, L.S.	20861700	1
13	Pivot Arm Weldment Front, L.S.	20862700	1
	Pivot Arm Weldment Rear, H.S.	20862700	1
	Pivot Arm Weldment Front, H.S.	20861700	1
14	Label, Lamp	20438905	2
15	Lamp Shell	20213301	4
16	Nut Plate	20863800	4
	Screw 8-32x3/8 soc.head	H3217	4
	Lock Washer, #8	H1551	4
	Flat Washer, #8	H1563	4
17	Lamp Scale, Front L.S.	20866200	1
	Lamp Scale, Rear L.S.	20866101	1
	Lamp Scale, Front H.S.	20866100	1
	Lamp Scale, Rear H.S.	20866201	1
18	Knob	20287001	4
19	Pin, Pivot	20863400	4

REF.	DESCRIPTION	PART NO.	QTY.
20	Retaining Ring, 1/4"	H9331	4
21	Spring	19563601	4
22	End Plate, Rear L.S.	20861800	1
	End Plate, Front L.S.	20863600	1
	End Plate, Rear H.S.	20863600	1
	End Plate, Front H.S.	20861800	1
23	Nut, 1/2 x 20	H4941	4
	Flat Washer, 1/2"	H1905	4
21	Nut, Special Weldment	H6909	4
25	Nut, Self Locking, 8-32	H1336	4
26	Screw,	H4724	4
	Flat Washer, #8	H1563	4
27	Nut, 8-32 w/Lock Washer	H9041	16
	Flat Washer, #8	H1563	16
28	Reflector Assembly	206782	4
29	Lamp, 120 Volt, 500 Watt	19068201	4
30	Lamp Bracket	206782	4
31	Socket only	09188201	8
	Screw, 4-40 x 5/8	H5855	16
	Nut, 4-40	H1445	16
32	Wire Spade	40131789	8
33	Nut, 8-32 w/Lock Washer	H9041	4
31	Bracket, fastener	206935	16
35	Screw, self tapping 6-32 x 3/8	H2605	16
36	Screw, 8-32 x 1/4	H6848	16
	Flat Washer, #8	H1563	16
	Nut, 8-32 w/Lock Washer	H9041	16
37	Cap Screw, 8-32 x 3/8	H3217	2
	Lock Washer, #8	H1551	2
	Flat Washer, #8	H1563	2
NS	Lamp Shield, wire mesh	20876000	A/R
	Screw, 10-32 Nylon Thumb	H0799	2
	Pointed Light Baffles	20314001	A/R

Legend: L.S. - Latch Side of machine  
 as it relates to the material  
 compartment door, also right side.  
 H.S. - Hinge Side of machine as  
 it relates to the material  
 compartment door, also left side.  
 Front - copyboard end of unit.  
 Rear - delivery end of unit.

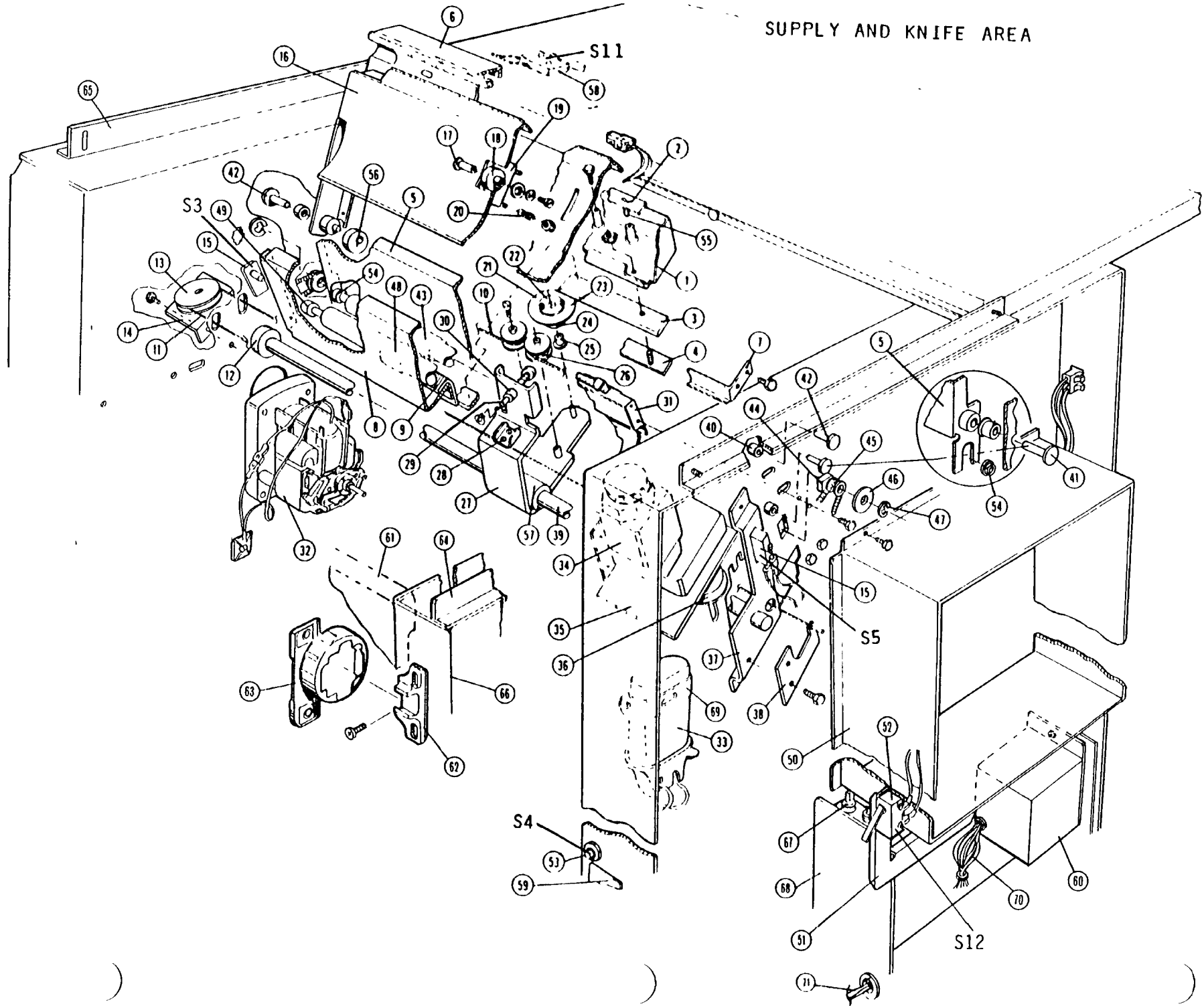
SUPPLY AND KNIFE AREA



SUPPLY AND KNIFE AREA

REF.	DESCRIPTION	PART NO.	QTY.	REF.	DESCRIPTION	PART NO.	QTY.
1	Fogger/Stationary Knife Assy. (Items #2, #3, & #4 assembled)	20605201	1	29	Button	20297601	1
2	Fogger P.C.B.	20605501	1	30	Bearing	02447900	1
	Screw, 6-32 x 1/2	H6838	4		Spring	20314101	1
3	Stationary Knife	20577201	1	31	Side Guide Assv. Complete	20608701	1
4	Plate	20605301	1		Screw, 10-32 x 3/8	H6873	4
	Nut, 8-32	H9041	4	32	Wind/Transport Motor	20876100	2
	Flat Washer, #8	H1563	4		Screw, 8-32 x 3/8	H6872	4
5	Inner Guide	206819	1	33	Capacitor	08700134	1
6	Top Guide Cover (S/N 1266 & Below)	207577	1		Screw, 10-32 x 3/8	H6873	2
	(S/N 1267 & Above)	21055400	1	34	Knife Motor	20307901	1
7	Guide	20607801	1		Screw, 8-32 x 3/8"	H4721	4
	Screw, 8-32 x 3/8	H6872	4		Lock Washer, #8	H1551	4
8	Guide	20607101	1		Flat Washer, #10	H1569	2
	Screw, 8-32 x 3/8	H6872	4	35	Motor Bracket	20607302	1
9	Light Seal	40151370	A/R		Screw, 10 x 32 x 3/8	H6873	2
	Double Sided Tape	40151371	A/R	36	Drum, Aluminum	20297501	1
10	Knife Cable - short	20576901	1		Drum, Plastic	20890300	1
11	Knife Cable - long	20577001	1		Set Screw, 8-32 x 1/4	H0769	2
12	Bumper	20305401	1		Set Screw, 10-32 x 3/8	H1164	1
13	Pulley	19883701	1	37	Switch Bracket	20608401	1
	Retainer	H9286	1		Screw, 10-32 x 3/8	H6873	2
14	Bracket	20297201	1		Pin, .187 x 3/8	H2586	2
	Screw, 10-32 x 3/8	H6873	2	38	Spring, Leaf	19886301	1
15	Switch	20128501	2		Flat Washer, #8	H1563	2
16	Upper Guide Assembly (Items 18-20 assembled)			39	Screw, 8-32 x 3/8	H8224	2
	(S/N 1266 & Below)	206840	1		Shaft, Knife Carrier	20606801	1
	(S/N 1267 & Above)	21055600	1	40	Nut, 10-32	H1444	1
	Pivot Screw	H1634	2		Bearing		
17	Pem Stand-off, 6-32 x 5/8	H9133	1		(S/N 1266 & Below)	09258004	4
	Screw, 6-32 x 1/4	H4704	1		(S/N 1267 & Above)	09258021	4
	Lock Washer, #6	H1550	1	41	Pivot Pin, 1/4 x 3/4	H3488	2
	Flat Washer, #6	H1564	1	42	Pivot Pin, 1/4 x 1-1/4 (S/N 1266 & Below)	H3490	2
18	Roller	20312001	1		Set Screw, 6-32 x 3/16	H1160	4
19	Bracket	207442	1		Screw, allen head shoulder		
20	Spring	01393901	1		S/N 1267 & Above	H1634	2
	Nut, Locking, 8-32	H1336	2	43	Steel Roller	20311701	1
21	Knife, Rotary (one piece unit)	20309801	1	44	Bearing	01371601	2
	Knife, Rotary	206915	1	45	Spring	09572400	2
	(Items 21-25 assembled)			46	Washer, Plastic	40152478	2
22	Plate	206912	1	47	Retainer	H9331	2
	Pan Head Screw, 4-40x1/4"	H6870	2	48	Steel w/Rubber Segment Roller	20083001	1
	Flat Head Screw, 4-40x3/16"	H0378	2	49	Bearing	09258021	2
23	Knife, Rotary Disc	206913	1		Retainer	H9328	2
24	Hub	206914	1		Collar	09185000	1
25	Bearing	09258008	1		Set Screw, 6-32 x 3/8	H1160	1
26	Cable Roller	20297701	2	50	Shroud	20608601	1
	Screw, 6-32 x 1/4	H4704	2		Screw, 10-32 x 3/8	H6873	4
27	Carrier Assembly	20298803	1	51	Switch Bracket (1 terminal)	20927600	1
28	Clamp Plate	19696901	1		Switch Bracket (3 terminal)	21039000	1
	Screw, 6-32 x 1/4	H4704	2	52	Nut, 8-32	H9041	2
					Switch (S11) w/4 terminals	20930600	A/R
					Switch (S11) w/3 terminals	19057401	A/R
					Screw, 6-32 x 3/4	H6839	2

SUPPLY AND KNIFE AREA



SUPPLY AND KNIFE AREA

53	Switch, Prefeed	09072601	1
54	Nyliner, Bearing	06754700	2
55	Fogger Lamp	19214301	5
56	Cam, Eccentric	206821	2
	Set Screw, 6-32 x 3/16	H1160	4
57	Bearing Assy. - Knife Carrier	20311901	1
58	Switch	19057401	1
59	Prefeed Label	20365605	1
60	Circuit Breaker, 220V	19598203	1
	Cover, for 220 volt breaker	20936600	1
	Circuit Breaker, 110V	19598204	A/R
	Cover, for 110 volt breaker	21038500	A/R
	Nut, 8 x 32	H9041	2
	Gromment, 220 volt	40142011	1
61	Rear Door	20922000	1
	Magnetic Strip	19806404	A/R
62	Hinge	20881601	2
63	Hinge	20881600	2
	Screw,	H5311	8
64	Mounting Bracket, H.S.	20927100	1
65	Mounting Bracket, L.S.	20927000	1
66	Filler Extension, H.S.	20929200	1
	Filler Extension, L.S.	20926200	1
67	R.F.I. Filter	40123950	1
	Nut, 8 x 32	H9041	2
68	Power Box	20927500	1
69	Capacitor Bracket	09684700	1
70	Power Box Harness, 220 volt (S/N 1810 & Below)	20933100	1
	Power Box Harness, 220 volt (S/N 1811 & Above)	20933101	1
71	Power Cable, 220 volt (S/N 1810 & Below)	20933000	1
	Power Cable, 220 volt (S/N 1811 & Up)	20933001	1
	Power Cable, 110 volt	05852113	A/R

Legend: L.S. - Latch Side of machine  
as it relates to the material  
compartment door, also right side.  
H.S. - Hinge Side of machine as  
it relates to the material  
compartment door, also left side.  
Front - copyboard end of unit.  
Rear - delivery end of unit.

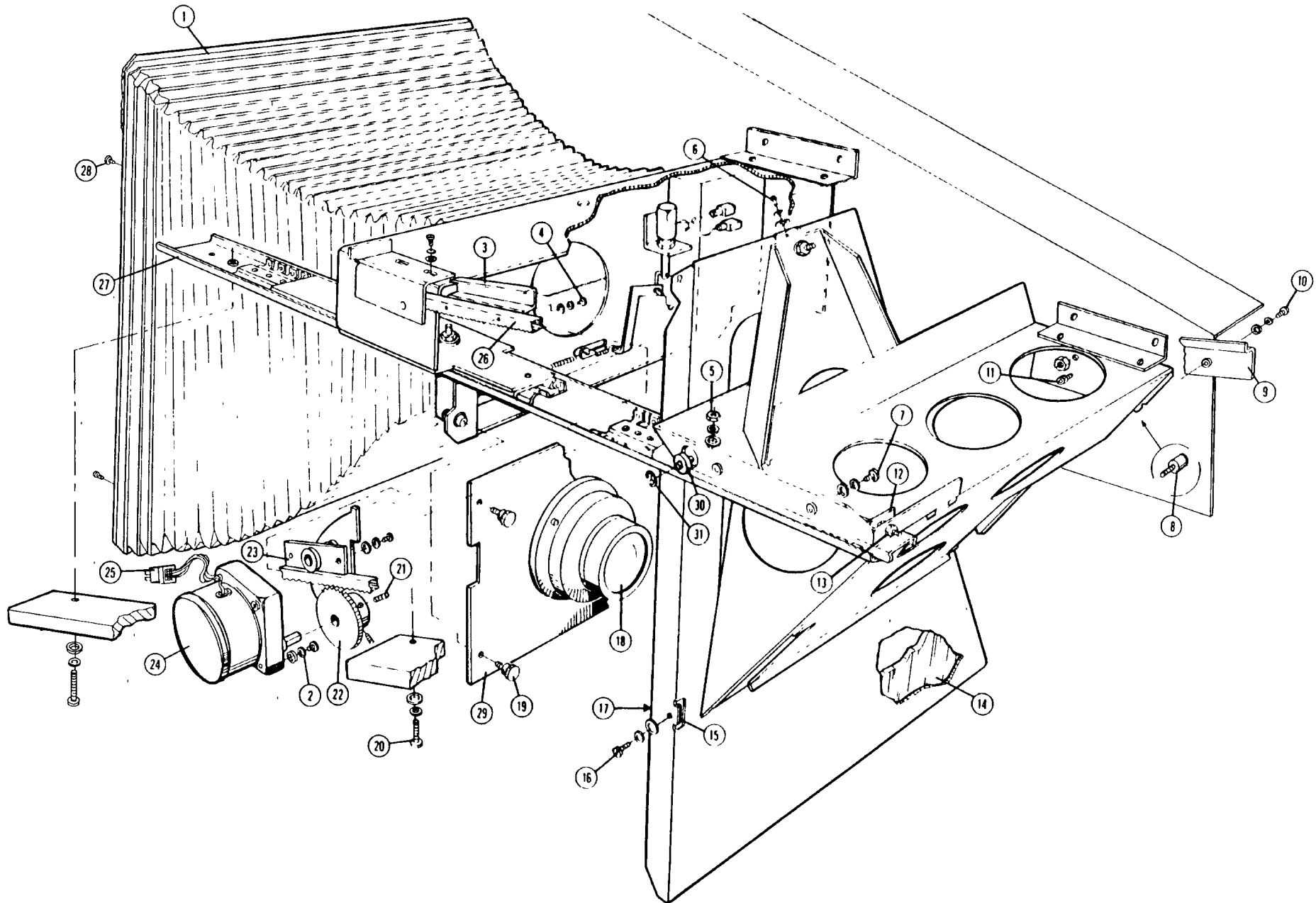


LENS CARRIER ASSEMBLY - 20135201

Ref.	Description	Part No.	Qty.
1	Shutter Assembly	19633301	1
2	Shutter Plate Weld. Assembly	20100101	1
3	Solenoid Assembly	20135101	1
4	Cam Follower	09352900	1
	Spacer	03658700	1
	Lock Washer	H1552	1
	Hex Nut	H1444	1
5	Hex Nut	H1361	2
6	Retaining Ring	H9307	2
7	Link	19862801	1
8	Cap Screw	H2732	1
9	Retaining Ring	H9329	1
10	Shutter Link ("L" shaped)	19848301	1
	Shutter Link ("T" shaped)	21061100	A/R
11	Spring (1" long, for "L" shaped link)	19255401	1
12	Spring (1 1/4" long for "T" shaped link)	40149711	A/R
	Spring (1 7/8" long)	19255501	1
13	Machine Screw, 4-40 x 1/4"	H5861	4
	Lock Washer	H1557	4
	Spring & Link Kit	21055800	1
	. Spring	40149711	1
	. Shutter Link	21061100	1
	. Retaining Ring	H9307	2
	. Retaining Ring	H9329	1

Revised 10/92

## OPTICS ASSEMBLY

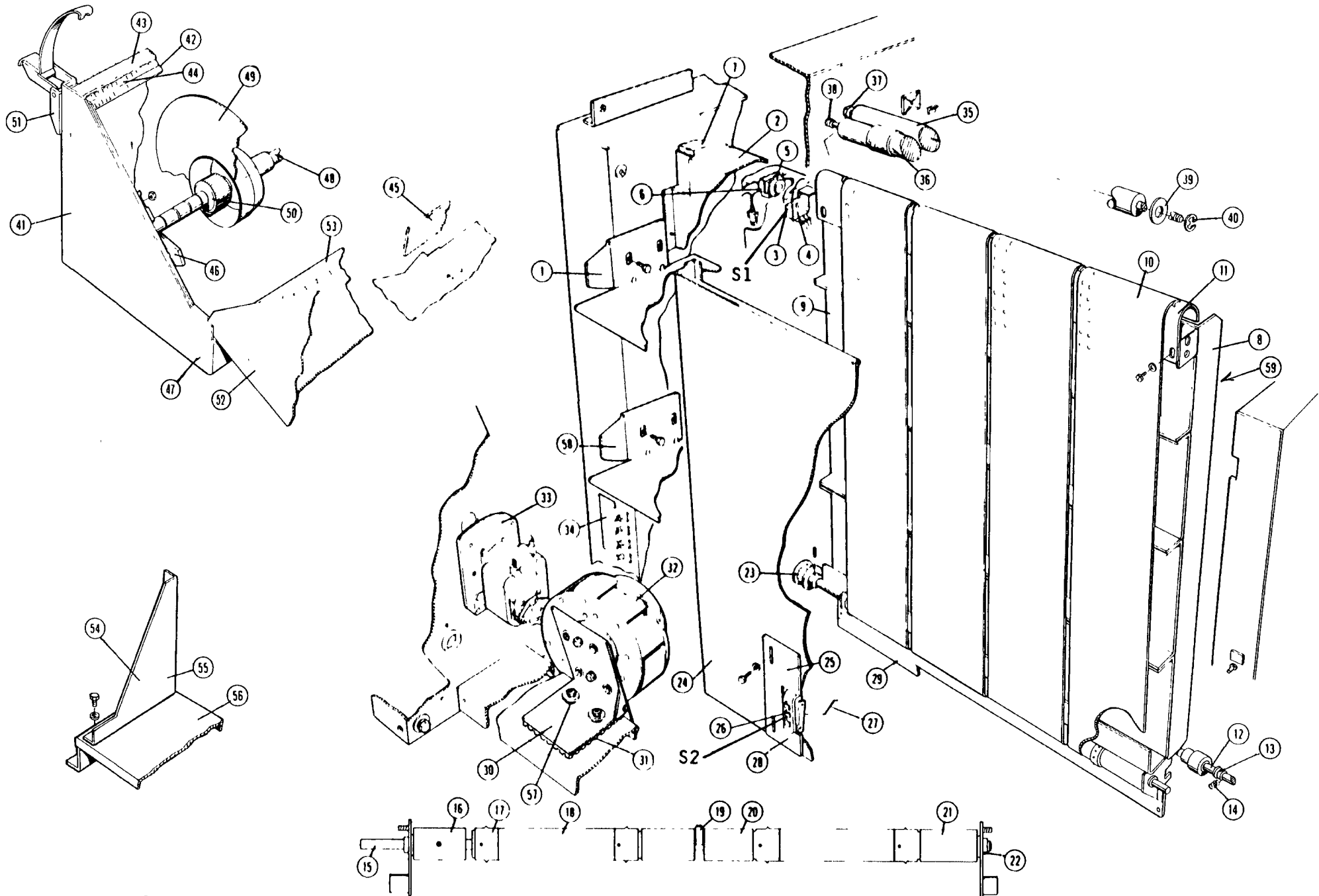




## OPTICS ASSEMBLY

Ref.	Description	Part No.	Qty.	Ref.	Description	Part No.	Qty.
1	Bellows Assembly	20113002	1	11	Cap Screw, 10-32 x 3/8"	H2732	1
2	Machine Screw, 8-32 x 3/8"	H4721	4	12	Cam Follower Bracket Assembly	20192101	1
	Flat Washer, #8	H1563	4	13	Hex Nut, 10-32	H1444	2
	Lock Washer, #8	H1551	4	14	Mirror	20094401	1
3	Switch Actuator, 100%	20110001	1	15	Tape (cord pad)	PL841900	A/R
4	Machine Screw, 8-32 x 1/4"	H4719	2	16	Machine Screw, 8-32 x 1/4"	H4719	3
	Lock Washer, #8	H1552	2		Lock Washer, #8	H1551	3
	Flat Washer, #8	H1563	2		Flat Washer, #8	H1563	3
5	Hex Nut, 10-32	H1444	2	17	Mirror Clip Assembly	20118301	3
	Flat Washer, #10	H1562	2	18	Lens	20517302	1
	Lock Washer, #10	H1552	2	19	Allen Screw	H3208	3
6	Machine Screw, 8-32 x 1/4"	H4719	3	20	Machine Screw, 10-32 x 1"	H0657	3
	Lock Washer, #8	H1551	3		Lock Washer, #10	H1552	3
	Flat Washer, #8	H1563	3		Flat Washer, #10	H1562	3
7	Machine Screw, 10-32 x 3/8"	H4654	2	21	Set Screw, 10-32 x 3/8"	H1164	2
	Lock Washer, #10	H1552	2	22	Mirror Cam Assembly	20110301	1
	Flat Washer, #10	H1902	2	23	Hold Down Assembly	20109701	1
8	Cam Follower	09352900	1	24	Stepper Motor Assembly	20093301	1
	Spacer	03658700	1	25	Connector - Plug	40132905	1
	Lock Washer #10	H1552	1	26	Gear Rack	20083101	1
	Hex Nut, 10-32	H1444	1	27	Ball Slide Assembly	20110101	1
9	Guide Rail Assembly	206867	1	28	Machine Screw, 6-32 x 1/4"	H4701	8
10	Machine Screw, 10-32 x 3/8"	H4654	3	NS	Transmissive Sensor	20065201	1
	Lock Washer, #10	H1552	3	29	Lens Plate	20384901	1
	Flat Washer, #10	H1562	3	30	Bushing	09258004	1
				31	E-Ring	H9272	1

## FOCAL PLANE

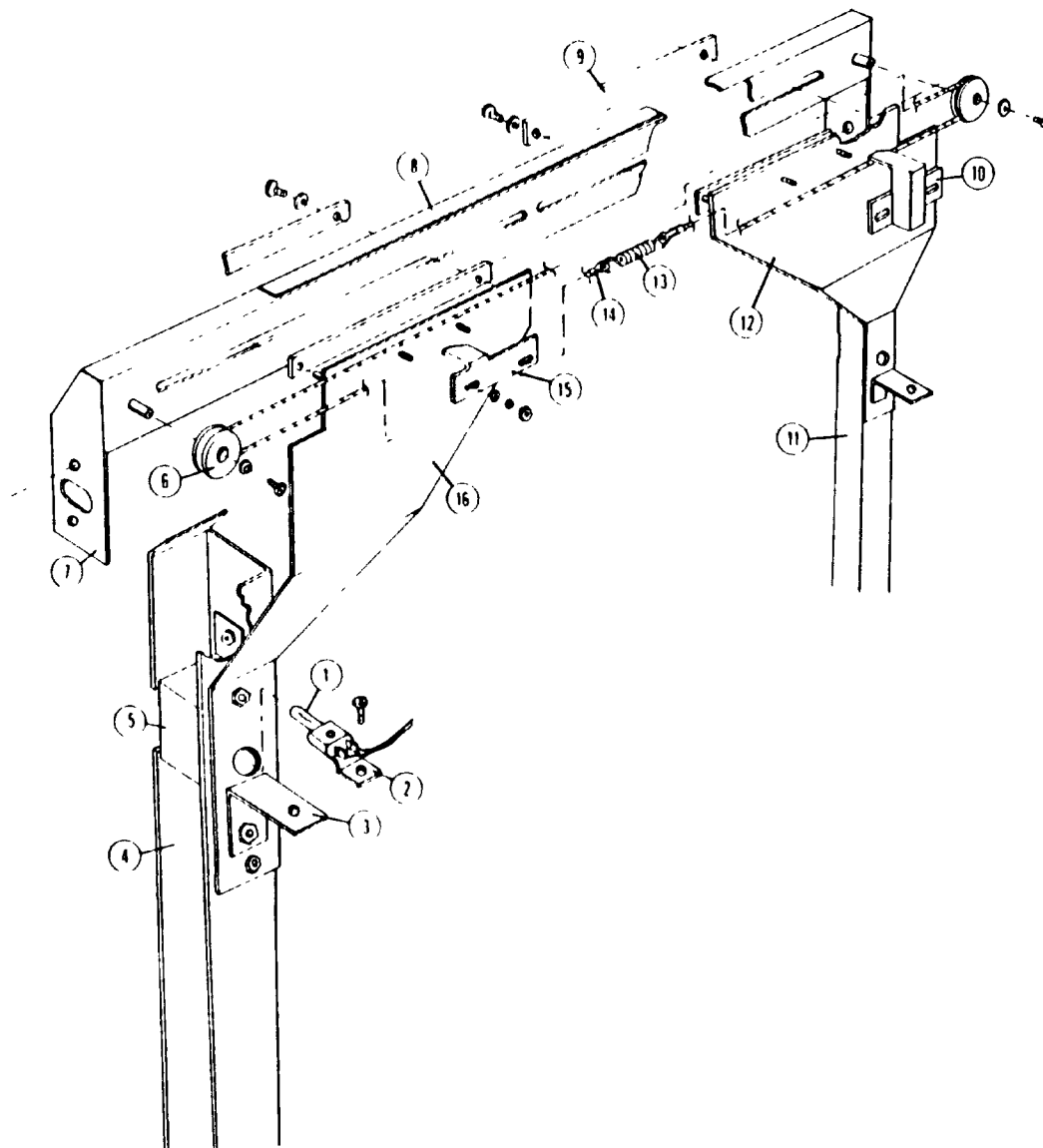


REF.	DESCRIPTION	PART NO.	QTY.
1	Inner Wall, S/N 1398 & Below	20682201	1
	Inner Wall, S/N 1399 & Above	21051400	1
	Screw, 10-32 x 3/8"	H6873	8
2	Lower Guide Assembly (Items 3-7 assembled)	206842	1
3	Switch, No Material	19302201	1
	Screw, 4-40 x 3/4"	H5841	2
	Flat Washer, #4	H1565	2
	Lock Washer, #4	H1557	2
	Nut Plate	19066001	1
4	Switch Bracket	206841	1
	Nut, 8-32	H9041	2
5	Roller	20297901	1
	Set Screw, 6-32 x 1/4"	H1159	1
6	Digital Pot.	206745	1
7	Foam Tape	40151325	A/R
8	Platen Assembly (Items 9-22 assembled)	20605601	1
9	Platen Only	20605701	1
10	Belt	20577101	4
11	Upper Belt Guide	20318601	1
12	Platen Exit Roller Assembly	20319801	1
	Roller	20157901	2
	Shaft	20319101	1
	Retainer	H9331	2
13	Bearing	01371601	2
14	Spring	09572400	2
15	Shaft	206817	1
16	Roller Segment	203187	1
	Set Screw, 10-32 x 1/4"	H6928	1
17	Sprocket	20180901	4
	Pin, 3/32 x 7/8"	H5137	4
18	Roller Segment	20203201	2
19	Center Bearing	20319901	1
	Set Screw, 6-32 x 3/8"	H0774	2
20	Roller Segment	20318901	1
21	Roller Segment	20318801	1
22	Bearing	09258014	2
23	Gear	20247601	1
24	Vacuum Back Weldment	20606501	1
25	End Sense Switch Assembly (Items 26-28)	20293101	1
26	Switch	19285001	1
27	Actuator	20150001	1
	Actuator Sleaving	E0189000	1
28	Switch Bracket Only	20273501	1
	Flat Washer, #4	H1565	2
	Screw, 4-40 x 3/4"	H5841	2
	Lock Washer, #4	H1557	2
29	Input Guide	20936500	1
30	Blower Mount	20610401	2

Legend: L.S. - Latch Side of machine  
as it relates to the material  
compartment door, also right side.  
H.S. - Hinge Side of machine as  
it relates to the material  
compartment door, also left side.

Ref.	Description	Part No.	Qty.
31	Isolation Pad	20610301	2
	Blower Box	207302	1
	Cap Screw, 1/4-20 x 1"	H0595	4
	Flat Washer, 1/4	H1562	2
	Lock Washer, 14	H1553	2
32	Blower (2 pin plug)	20093402	2
	Blower (3 pin plug)	20093403	2
	Metric Screw, 4 x 10	H7250	4
	Flat Washer, #8	H1563	4
	Lock Washer, #8	H1551	4
33	Focal Plane Motor	20876100	1
34	Label - Breakers	206901	1
35	Input Roller, Steel	20311701	1
36	Input Roller, Rubber Segmented	20083001	1
37	Bearing Nylon	01371601	2
38	Bearing	09258021	2
39	Washer, Nylon	40152478	2
40	Retainer	H9331	2
41	Reloadable Box Complete (Items 42-53 assembled)	20685501	1
42	Lower Seal Angle	20684801	1
	Screw, 8-32 x 3/8"	H5827	4
	Lock Washer, #8	H1584	4
43	Light Seal	206865	1
44	Scale	19047409	1
45	Light Seal	206865	1
46	Bearing Block (shown)	207074	1
	Bearing Block (not shown)	207073	1
	Nut 6-32	H1238	4
47	Cassette, Lower Section	20685701	1
48	Shaft	20684301	1
49	Spool End	206844	2
50	Spool End Nut	19162901	2
51	Latch	206847	2
	Screw, 6-32 x 1/2"	H6838	4
52	Cassette, Upper Section	20685401	1
	Screw, 8-32 x 3/8"	H5827	4
	Lock Washer, #8	H1584	4
53	Hinge Light Seal	20686002	1
54	Footed Cassette Adaptor Complete (Items 55-56)	207050	1
55	Side, H.S. (fixed)	207052	1
	Side, H.S. (adjustable)	21055300	1
	Side, L.S. (shown) (fixed)	207064	1
	Side, L.S. (adjustable)	21051200	1
56	Bottom (fixed)	207051	1
	Bottom (adjustable)	21051100	1
	Screw, 10-32 x 3/8" (fixed)	H6873	4
	Screw (adjustable)	H2732	4
	Screw Knob (adjustable)	20050203	4
57	Vibrator Washer	19803201	4
58	Cassette Bracket, L.S.	20975300	1
	Cassette Bracket, H.S.	20975400	1
	Screw, 10-32 x 3/8"	H6873	4
59	Platen Overlay Tape	207523 40151331	1 A/R

## SIDE GUIDE ASSEMBLY - 20608701



SIDE GUIDE ASSEMBLY - 20608701

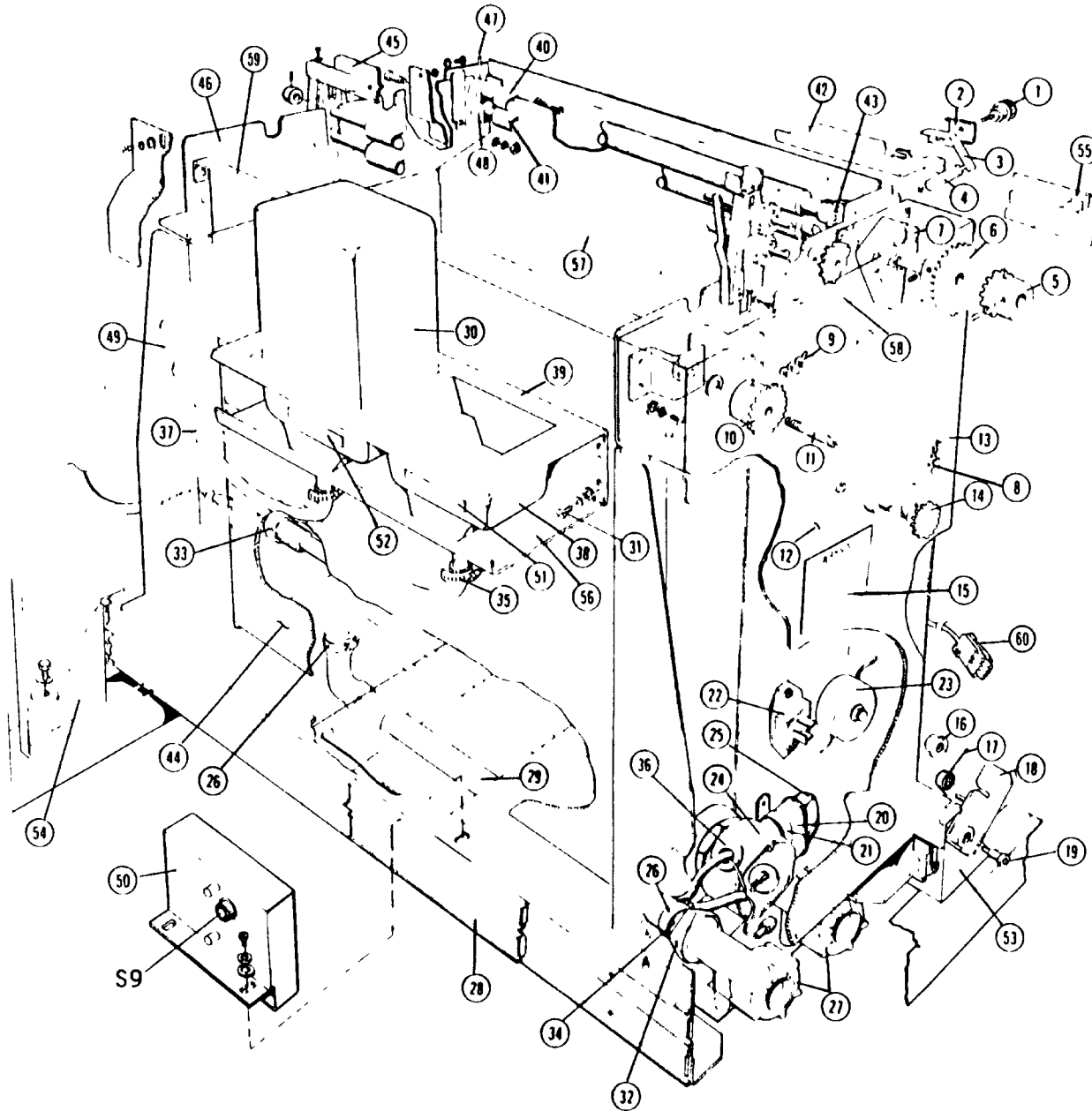
Ref.	Description	Part No.	Qty.
1	Lamp	19214301	2
2	Harness Assembly (includes sockets)	21207600	1
	Screw, 4-40 x 5/16"	H5852	2
	Lock Washer, #4	H1557	2
	Socket only	21206900	
3	Lamp Mount Angle	21205400	2
	Nut, 6-32	H1441	4
	Lock Washer, #6	H1550	2
	Flat Washer, #6	H1564	2
4	Channel Assembly, L.H.	21207800	1
	Nut, 6-32	H1441	4
	Lock Washer, #6	H1550	4
	Flat Washer, #6	H1564	2
5	Lamp Cover	20368900	2
	Nut, 6-32	H1441	4
	Lock Washer, #6	H1550	4
	Flat Washer, #6	H1564	4
	Light Gate Plate	20429901	2
6	Cable Roller	20297701	2
	Screw, 6-32 x 3/16"	H4703	4
	Lock Washer, #6	H1550	4
	Flat Washer, #6	H1564	4

Ref.	Description	Part No.	Qty.
7	Pulley Bracket Assembly	20608801	1
8	Scale	20376301	1
9	Spacor	20388701	4
	Screw, 6-32 x 3/8"	H0654	4
	Lock Washer, #6	H1550	4
	Flat Washer, #6	H1564	4
10	Pointer Handle	20361201	1
	Nut, 6-32	H1441	2
	Lock Washer, #6	H1550	2
	Flat Washer, #6	H1564	2
11	Channel Assembly R.H.	21207700	1
12	Arm, R.H.	21207400	1
13	Spring	19954401	1
14	Cable	20369001	1
15	Pointer	20361101	1
	Nut, 6-32	H1441	2
	Lock Washer, #6	H1550	2
	Flat Washer, #6	H1564	2
16	Arm, L.H.	21207500	1

Legend: L.S. - Latch Side of machine  
as it relates to the material  
compartment door, also right side.  
H.S. - Hinge Side of machine as  
it relates to the material  
compartment door, also left side.  
Front - copyboard end of unit.  
Rear - delivery end of unit.

Revised 11/94

PROCESSOR ASSEMBLY



PROCESSOR ASSEMBLY - 20909500

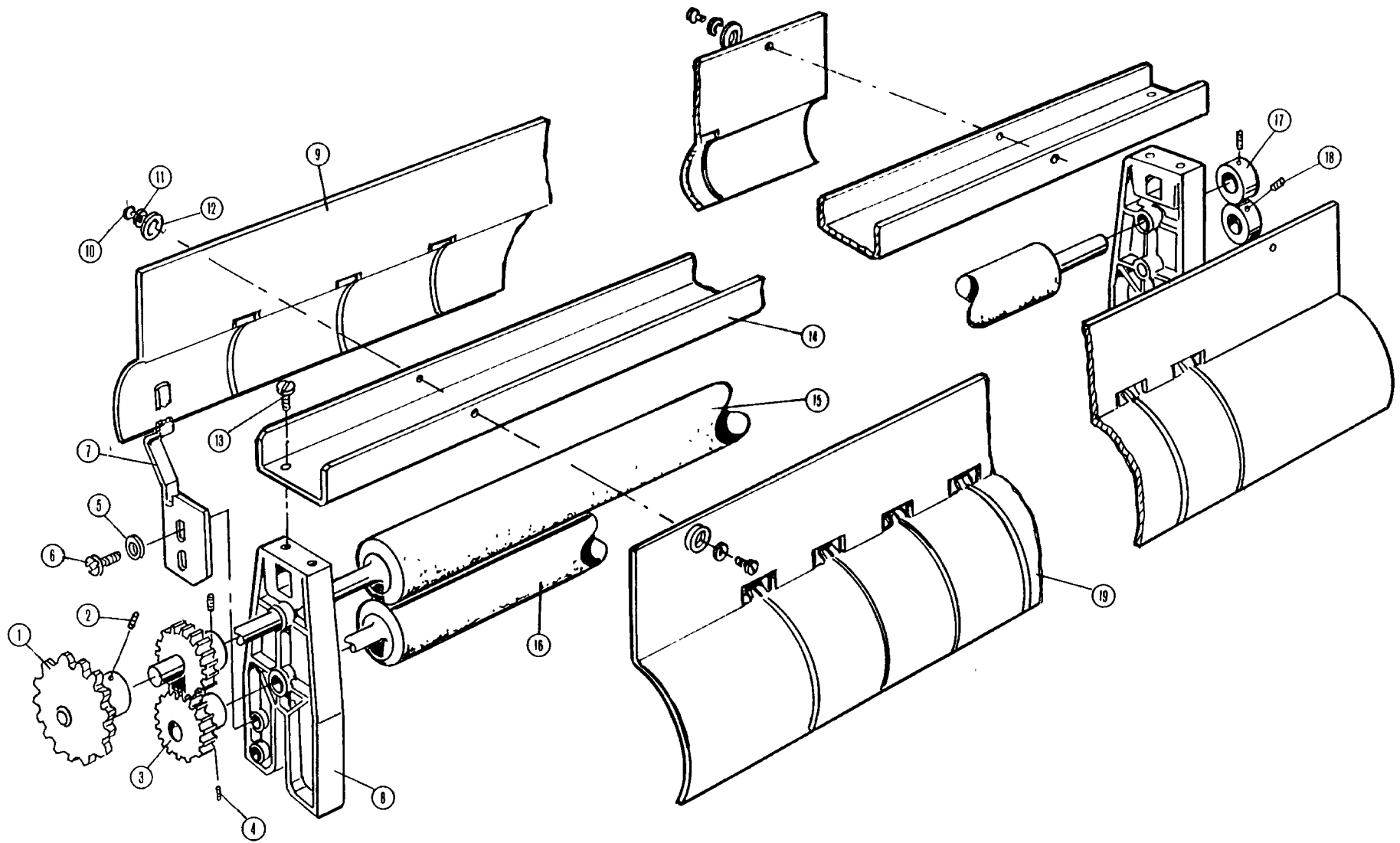
(Does not include Item #30)

Ref.	Description	Part No.	Qty.
1	Knob	20050202	2
	Screw, 6-32 x 5/8"	H3217	2
2	Marker	20169202	2
	Scale	19047408	1
3	Roller Bracket, L.S.	20006701	1
NS	Roller Bracket, H.S.	20006801	1
	Retainer	H9327	2
4	Roller	09882100	2
	E-Ring	H9329	2
5	Sprocket, 12T	09700100	1
	Set Screw, 10-32 x 3/8"	H1164	1
6	Sprocket, 25T	09744589	1
	Set Screw, 1/4-20 x 3/8"	H1153	1
7	Bearing Assembly	09073501	2
8	Chain	40144690	1
	Lubricate	H8333	A/R
9	Chain	09883200	1
	Lubricate	H8333	A/R
10	Sprocket	07892000	1
11	Sprocket Stud	09885400	1
	Nut, 5/16" x 18	H1451	1
	Lock Washer, 5/16"	H1554	1
	Washer, 5/16"	H1566	1
	E-Ring	H9330	1
12	Processor Motor Assembly	20313001	1
	Vibration Isolator Pad	207457	1
	Washer, Special	09888600	4
	Vibration Isolator Pad	19803201	4
	Ground Harness	21025900	1
	Screw, 10-32 x 1"	H6864	4
13	Cover Assembly	206923	1
	Door, Cover Assembly	207124	1
14	Sprocket, 15T	07431700	1
15	Label, Warning (Itek Supplies)	20484001	1
	Label, Warning (Liquid level)	21053900	1
16	Nut, 1/4-20	H1242	1
17	Spring	20197501	1
18	Latch	20199401	1
19	Screw, 1/4-20 x 1/2"	21071800	1
	Washer, 5/16"	H1887	2
20	Capacitor	08700135	1
21	Bracket	09684700	1
22	Triac Assembly	20123901	1
23	Filter Choke Assembly	20508801	1
	Stand-off	206741	1
24	Heater	01063900	1
25	Capacitor Cover	07134200	1
26	Hose Clamp	40143915	4
27	Valve Assembly	09716600	2
28	Slide L.H.	20114501	1
NS	Slide R.H.	20114502	1
29	Hose	20276601	2

Ref.	Description	Part No.	Qty.
30	Bottle	06749400	2
	Feeder Valve	20876200	2
	Label Act.(mixing instruction)	21054300	1
	Label Stab. " "	21054400	1
31	Screw, 8-32 x 3/8"	H6843	4
32	Nut	19138401	2
33	Temperature Probe	20868400	1
34	Valve Adapter	09717000	2
35	Hose Clamp, funnel	40143915	2
	Hose Clamp, tank	40143918	2
36	Grommet	E0195600	2
37	Hose, .500" dia.	20266001	1
38	Funnel	20526402	2
39	Funnel Cover	207510	1
40	Upper Exit Roller	09694802	1
41	Lower Exit Roller	20695001	1
42	Roller Bracket	20007502	1
	Screw, 6-32 x 1/4	H6836	2
43	Gear	09653600	2
	Pin, 1/8" x 3/4"	H5085	2
44	Tank	09700003	1
45	Squeegee Roller Assembly	20909100	1
46	Top Frame Assembly	20909300	1
NS	Scale	19047402	1
47	Set Screw, 8-32 x 3/16"	H3240	2
48	Collar	09651700	2
49	Hose	20266101	1
50	Switch Cover Assembly	20276501	1
	Compressions Spring	20125301	2
	Limit Control	19406901	1
51	Activator Label	21054000	1
52	Stabilizer Label	22054100	1
53	Slide Bracket Assembly R.H.	20187101	1
54	Slide Bracket Assembly L.H.	20174201	1
55	Exit Guide Top	20939500	A/R
	(Dryer model only)		
	Exit Guide Bottom	20939400	A/R
	Adapter, L. S.	20939300	A/R
	Adapter, H. S.	20939300	A/R
56	Funnel Support	207511	1
57	Drip Guard Assembly	20890201	1
	Grommet Guard	06772910	A/R
58	Chain Guide	07738300	1
	Nut, 10-32	H1444	2
	Flat Washer, #10	H1560	2
59	Splash Guard	20171703	1
60	AC Harness	20933600	1
NS	Drip Pan	207317	1
NS	Rebuild Kit	19440101	A/R

Legend: L.S. - Latch Side of machine  
as it relates to the material  
compartment door, also right side.  
H.S. - Hinge Side of machine as  
it relates to the material  
compartment door, also left side.  
Front - copyboard end of unit.

## CENTER SQUEEGEE ROLLERS - 20909100

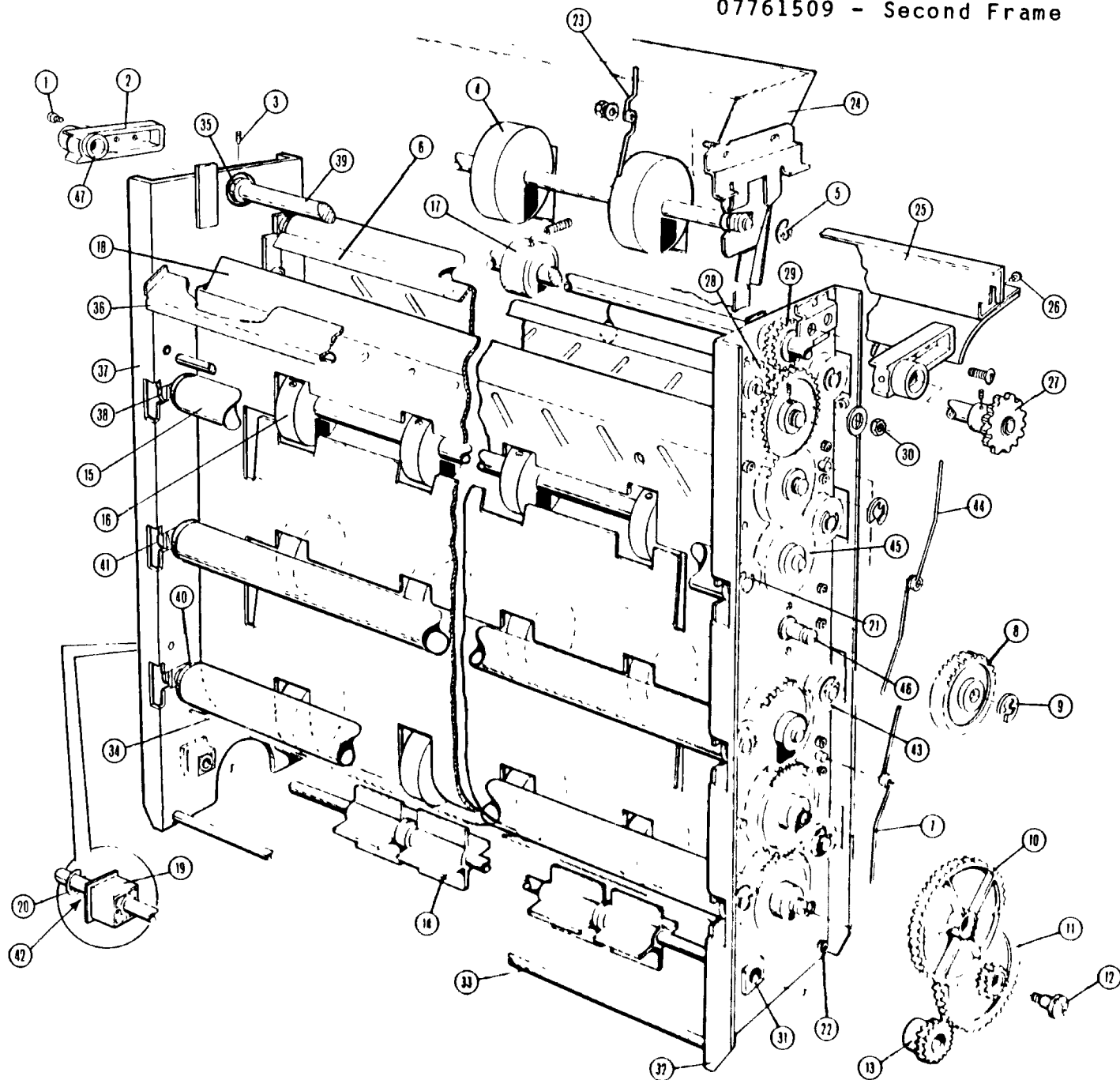




CENTER SQUEEGEE ROLLERS - 20909100

Ref.	Description	Part No.	Qty.
1	Sprocket	40150903	1
2	Pin, 1/8 x 7/8"	H5096	1
3	Gear	09185200	2
4	Pin, 1/16 x 5/8"	H5138	2
5	Washer, #6	H1564	4
6	Screw, #6 x 1/2"	H2628	6
7	Clip Assembly	07788200	1
8	Bearing	09185100	2
9	Entrance Guide	20911400	1
10	Screw, 6-32 x 1/4"	H6836	4
11	Washer, #6	H1564	4
12	Lock Washer, #6	H1550	4
13	Screw, #6 x 1/2"	H2628	4
14	Channel	20909200	1
15	Roller	09653106	1
16	Roller	09653107	1
17	Collar	09185000	2
18	Set Screw, 6-32 x 3/16"	H1160	2
19	Exit Guide	20438102	1

ROLLER FRAMES  
07761410 - First Frame  
07761509 - Second Frame

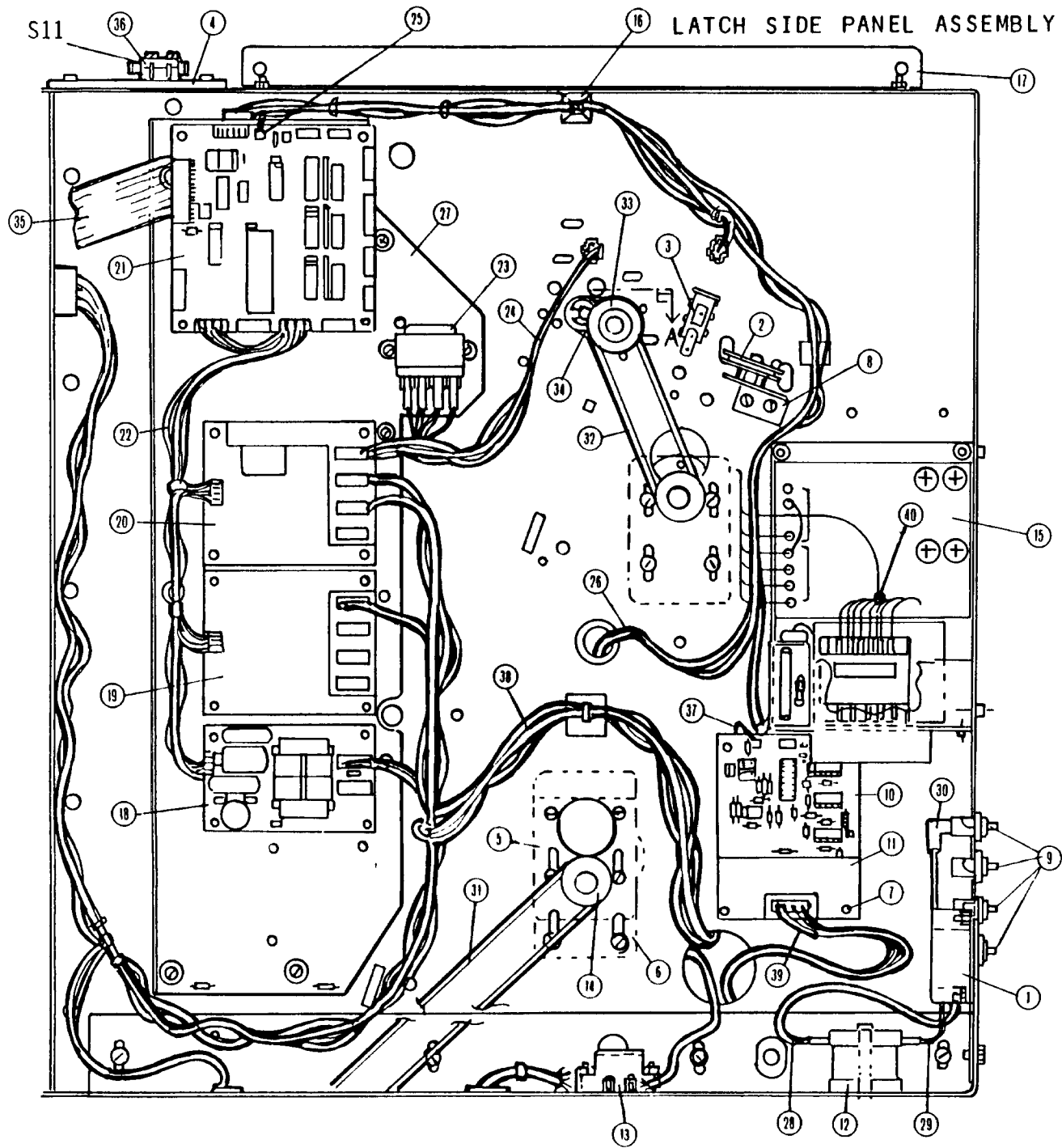


ROLLER FRAMES

07761410 - First Frame  
07761509 - Second Frame

Ref.	Description	Part No.	Qty	Ref.	Description	Part No.	Qty
1	Screw, 10-32 x 3/8"	H4654	4	27	Sprocket	07472208	2
2	Bearing	07434001	2		Pin, 1/8 x 1"	H5097	
3	Set Screw 6-32 x 3/8"	H1162	2	28	Gear	07423600	2
4	Rollers & Shaft Assembly	20542802			Bushing	07423500	2
5	Retaining Ring	H9328	2		Washer, 7/8"	40152484	2
6	Exit Guide	20750601	2	29	Gear, Nylon, 16T	07425700	2
7	Spring (heavy duty)	06884301	4		Gear Metal, 16T	09272900	A/R
8	Gear 30T	07426000	4		Pin, 1/8 x 5/8"	H0045	
9	E-Ring	H9330	7	30	Nut, 10 32	H1444	2
10	Gear, Combination	07447200	2	31	Bearing (1/4")	07446600	2
11	Gear, Idler	07447300	2		Bearing (3/8")	09699500	
12	Stud	09701100	2	32	Side Frame (gear side for 1/4" paddle gear)	07761000	1
13	Gear, Paddle (1/4")	07446800	2		Side Frame (gear side for 3/8" paddle gear)	21056700	1
	Gear, Paddle (3/8")	21057100	2		Side Frame (gear side for 1/4" paddle gear)	07761200	1
	Pin, 1/16 x 1/2	H5140	2	*32	Side Frame (gear side for 3/8" paddle gear)	21056800	1
14	Paddle Wheel Assembly (1/4")	19012102	4	33	Tie Rod	09654303	2
	Paddle Wheel Assembly (3/8")	21057000	2	34	Turn Guide with slots	19683202	
	Paddle Wheel (common)	20209801	1		Turn Guide without slots (S/N 1691 & Up)	19683203	2
	Shaft, 1/4"	19012002	2		Washer, flat	H1564	
	Shaft, 3/8"	21056900	2		Screw, socket head	H3182	
15	Tension Roller Assy (metallic)	05842705	7	35	Collar	07425200	2
	Tension Roller Assy (non-metallic)	21281200	A/R	*36	Guide	20750401	1
	Roller Only (non-metallic)	21213900	A/R	37	Side Frame (non-gear side for 1/4" paddle gear)	07760900	1
	Gear	07425000	A/R		Side Frame (non-gear side for 3/8" paddle gear)	21056500	1
	Pin, 1/8 x 9/16	H5136	A/R	*37	Side Frame (non-gear side for 1/4" paddle gear)	07761100	1
	Retainer	H9328	A/R		Side Frame (non-gear side for 3/8" paddle gear)	21056400	1
	Bearing	09787800	A/R	38	Bearing	09787800	2
	Roller only (metallic)	07424506	A/R	39	Drive Shaft	20375302	2
	Gear	07425000	A/R	40	End Plug (non-gear side)	07435800	7
	Pin, 1/8 x 9/16	H5136	A/R		End Plug (gear side)	07435900	7
	Retainer	H9328	A/R	41	Retaining Ring	H9302	A/R
	Bearing	09787800	A/R	42	Flat Washer, 3/8" (bottom shaft only)	H1568	2
16	Roller Drive Assembly	07761304	3	43	Gear, 16T	07425000	14
	Roller Only	19669601	12	44	Spring (light duty)	06884300	4
17	Rubber Roller	20170701	4		Retaining Ring	H9285	8
	Set Screw, 10-32 x 3/16"	H6912	4	45	Gear, 30T	07426100	4
18	Entrance Guide	20750701	2		Pin, 3/32 x 3/4"	H5093	4
19	Bearing	09699500	7	46	Repair Idler Stud	20762800	A/R
20	Retaining Ring	H9330	7		Nut, 1/4-20	H1443	A/R
21	Retaining Ring	H9328	7		Lock Washer, 1/4"	H1563	A/R
22	Screw, 6-32 x 1/4"	H3182	17	47	Nyliner	09768100	2
23	Spring	09085101	1	NS	Rebuild Kit	19440101	A/R
24	Paper Chute Assembly Complete	20909800	1		*Used on Second Frame Only		
*25	Rear Transfer Assembly	20919800	1				
*26	Screw, 6-32 x 3/16	H4703					

Revised 3/97



LATCH SIDE PANEL ASSEMBLY

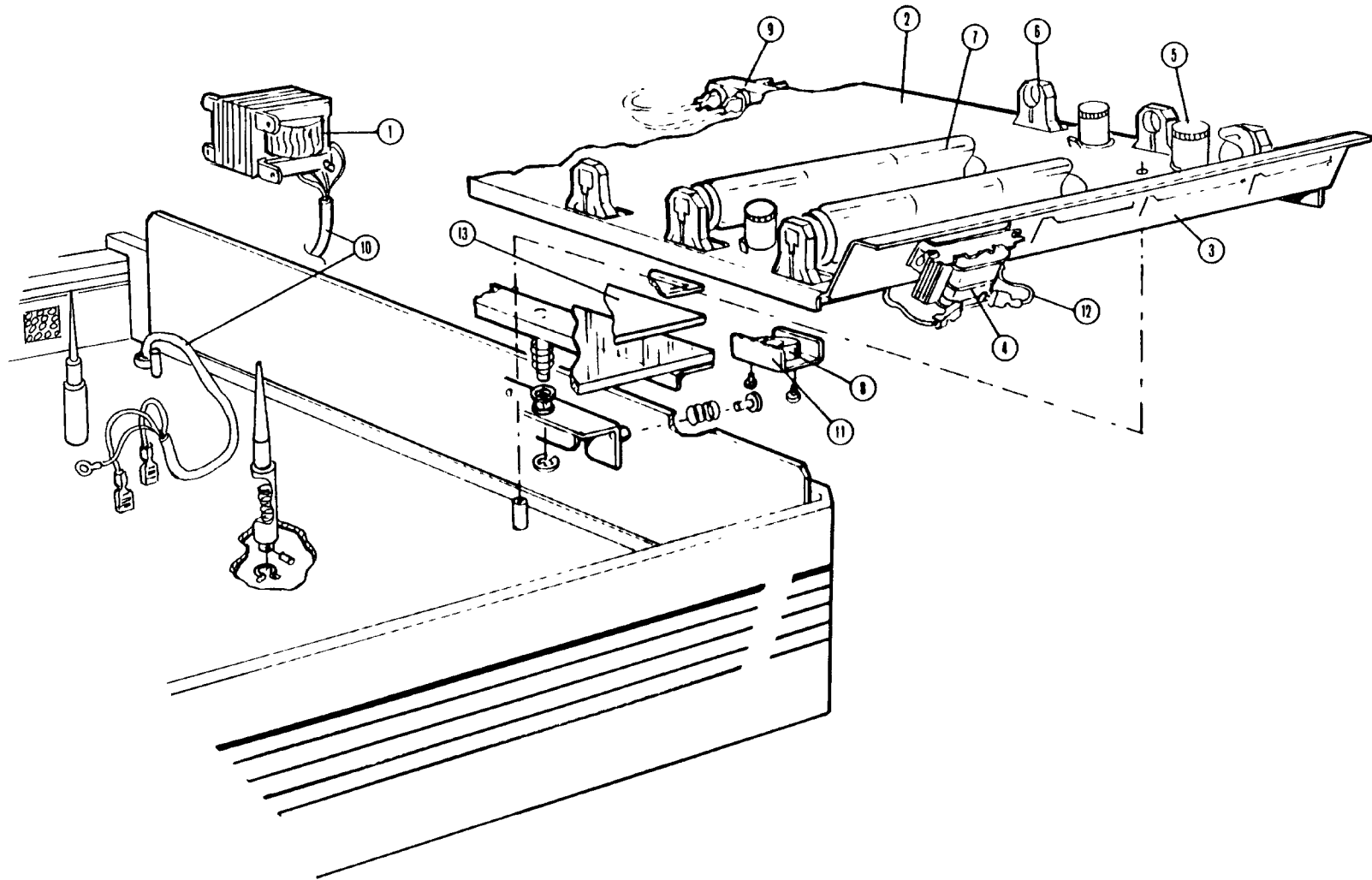
REF.	DESCRIPTION	PART NO.	QTY.
1	Relay, solid state	21060700	1
	Cover, relay	20931300	1
	Flat Washer, #6	H1554	2
	Nut, 6-32	H9040	2
	Guard, lamp relay	20957600	1
2	Pulley	19883701	1
	Retaining Ring, 1/4	H9286	1
3	Switch, push button	20128501	1
4	Spacer	20046901	2
	Retaining Plate	20611801	2
5	Motor	20876100	2
	Flat Washer	H1560	8
	Lock Washer, #8	H1551	8
	Screw, 8-32 x 3/8	H6843	8
6	Adapter Plate, motor	20936200	1
	Screw, 8-32 x 3/8 Flat Head	H0147	4
7	Standoff	20293401	4
8	Bracket	20297201	1
	Screw, 10-32 x 3/8	H6873	2
9	Circuit Breaker, 10 AMP	40121703	4
	Clip	20426301	4
10	Temperature PCB	20884703	1
11	Cover, PCB	20943600	1
12	Choke	20508801	1
	Bearing	02447900	1
	Screw, 10-32 x 1 3/4	H6857	1
13	Terminal Block	20941500	1
	Nut, 10-32	H9042	2
14	Pulley	20096101	2
	Pin, 3/32 x 5/8	H5077	2
15	Dual Volt Power Supply	20931700	1
	Screw, 8-32 x 1/2	H6844	2
	Nut, 8-32	H9041	2
	Fuse Holder	19781301	1
	Fuse, 1/2 AMP	08700919	1
	Label, fuse	20943202	1
	Cover, power supply	20931800	1

REF.	DESCRIPTION	PART NO.	QTY.
16	Tie Base	19480101	A/R
	Wire Tie	E0230702	A/R
17	Mounting Bracket (L.S.)	20927000	1
	Screw, 8-32 x 3/8	H6843	2
	Lock Washer, #8	H1551	2
	Flat Washer, #8	H1563	2
18	Shutter PCB	20288501	1
19	Triac PCB	20258003	1
	Triac PCB Cover	20932000	1
	Stand Off	20293401	4
20	Triac PCB with relay	20284002	1
	Triac PCB Cover	20932001	1
	Stand Off	20293401	4
21	Interconnect PCB	20378001	1
	Stand Off	20293401	4
22	Harness, DC	20933300	1
23	Transformer and Harness	20934300	1
	Lock Washer, #8	H1551	2
	Nut, 8-32	H1232	2
24	Harness, fogger - lead edge	20934300	1
25	Harness, side guide	20933800	1
26	D.C. Harness	20934200	1
27	Electronics Panel	20922200	1
28	Wire, choke to lamp relay	20933400	1
29	Wire, choke to circuit breaker	20933900	1
30	Wire, lamp relay to circuit breaker	20934000	1
31	Belt	20681801	1
32	Belt	20095901	1
33	Pulley	19349801	2
	Set Screw, 8-32 x 1/4	H1134	2
34	Spring	09572400	2
35	Cable	20933700	1
36	Microswitch	19057401	1
37	Probe Harness	20935500	1
38	AC Harness	20934700	1
39	Diode Assembly	2102550	1
	Diode	08700227	1
	Tubing	08704111	2 3/4"
	Female AMP Terminal	40131754	1
	Male AMP Terminal	40131755	1
40	Wire Splice	20318301	1

Legend: L.S. - Latch Side of machine as it relates to the material compartment door, also right side.  
H.S. - Hinge Side of machine as it relates to the material compartment door, also left side.  
Front - copyboard end of unit.  
Rear - delivery end of unit.



# **ACCESSORIES**

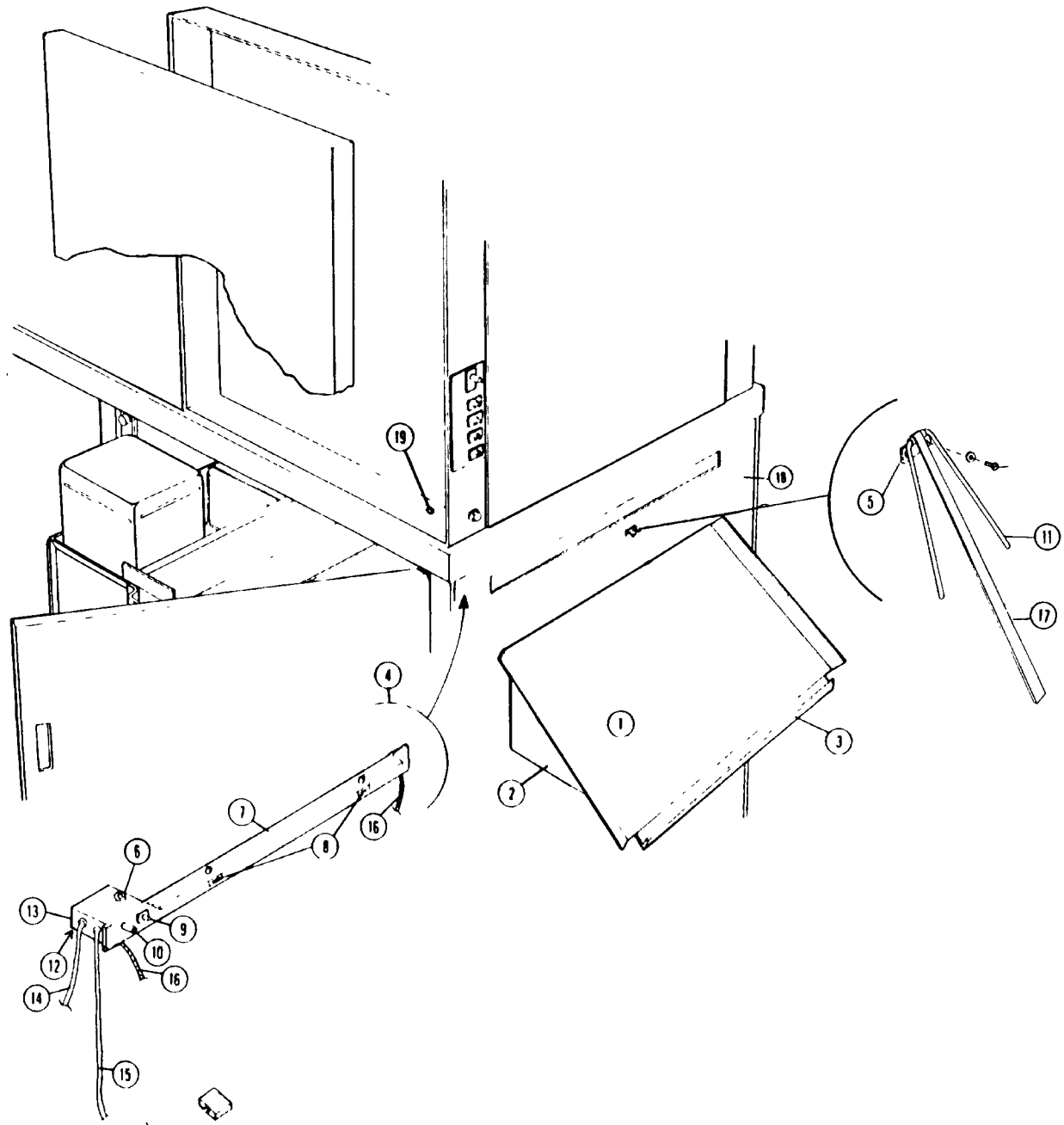




BACKLIGHTED COPYBOARD P/N 21022601 (PC 59705) 60Hz  
P/N 21022600 (PC 59703) 50Hz

Ref.	Description	Part No.	Qty.
----	-----	-----	----
1	Transformer Assembly with input harness	20954400	1
	Nut, 8-32	H9048	4
	Flat Washr	H1563	4
2	60Hz Backlight Reflector	20922800	1
	Assembly Complete (Items 3-12)		
	50Hz Backlight Reflector	20922801	1
	Assembly Complete (Items 3-12)		
3	Reflector	20928900	1
	Screw, 8-32 x 3/8"	H6872	4
	Washer	H1563	4
	Lock Washer	H1551	4
4	Ballast 60Hz	19249201	7
	Ballast 50Hz	20935100	7
	Nut, 10-32	H9042	14
	Flat Washer	H1569	14
5	Starter	E0168400	7
6	Lamp Holder	19016201	14
7	Fluorescent Lamp, cool white, ends	19225201	4
	Fluorescent Lamp, natural centers	20109001	3
8	Socket, starter	19489701	7
9	RFI Filter	40123918	1
	Nut, 8-32	H9041	2
	Flat Washer, #8	H1563	2
10	Qable Assembly	20935600	1
	Tie Wrap	E0230702	4
	Push In Tie Base	20133301	1
	Snap Bushing	09204702	1
	Snap Bushing	40142011	1
	Snap Bushing	40142017	1
	Screw, 8-32 x 3/8	H6872701	4
	Lock Washer, #8	H1551	4
	Flat Washer, #8	H1563	4
	Nut, 8-32	H9048	4
11	Bracket, starter	19482901	7
	Screw 6-32 x 1/4"	H6836	14
12	Harness, Lamp	20934900	1
13	Backlight Chart	20941600	1
	Tape, double sided	40151322	A/R
	Scale, Step & Repeat	20911600	A/R
NS	Harness Assembly	21038300	A/R

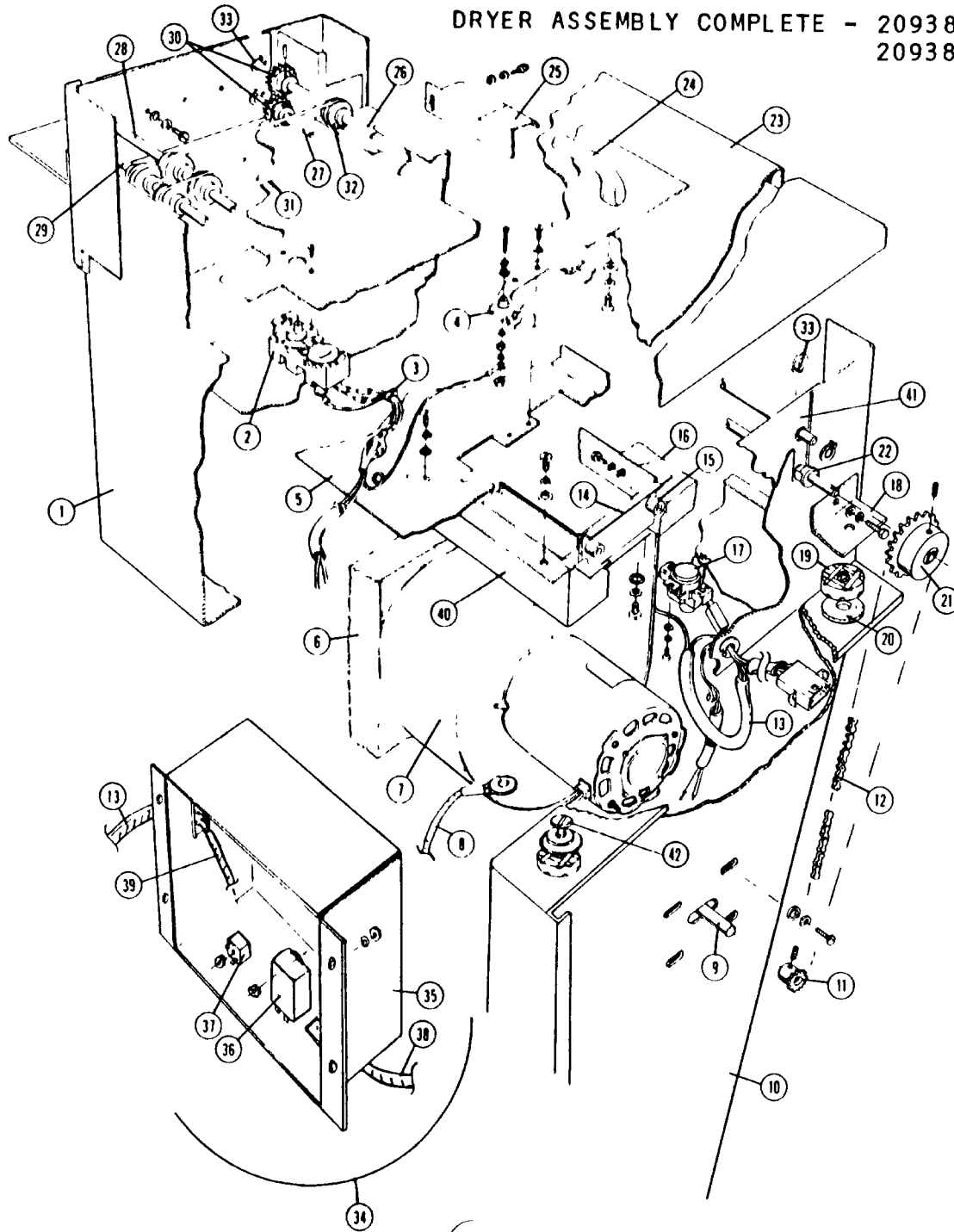
DRYER ASSEMBLY COMPLETE - 20938900 - 110V  
20938901 - 220V



DRYER ASSEMBLY COMPLETE - 20938900 - 110V  
 20938901 - 220V

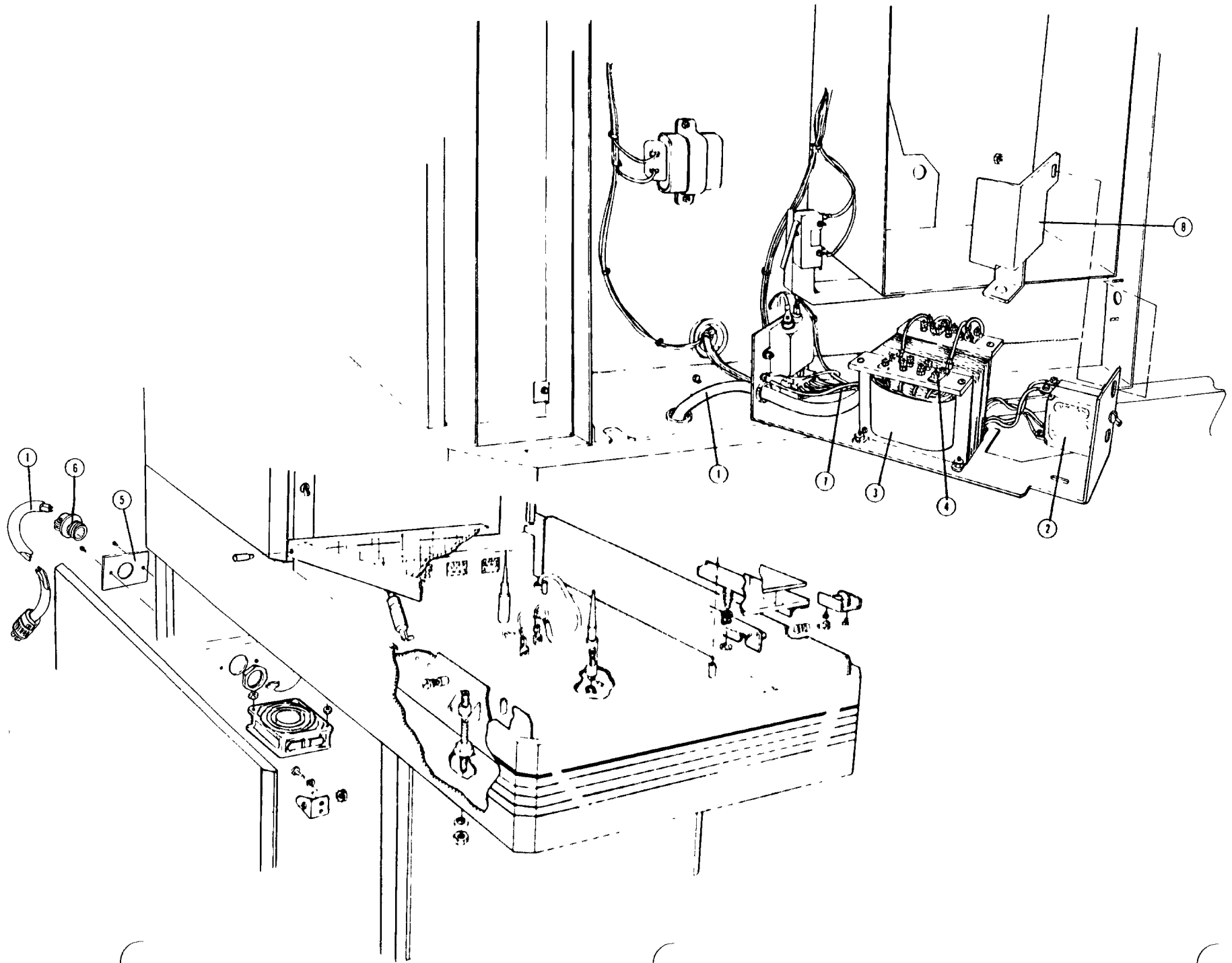
Ref.	Description	Part No.	Qty.
1	Plate Stacker Complete	20472802	1
2	Mount Bracket Weldment	20472602	1
	Tape	40151321	A/R
3	Stacker Slide	20484102	1
	Screw, 10-32 x 5/16	H0305	2
	Nut, 10-32	H1222	2
	Nut Nylon, 10-32	H1400	2
	Set Screw, 10-32 x 5/8	H1112	2
4	Striker Bracket Assy. Complete	20939100	1
5	Hinge	19112501	1
	Screw, 6-32 x 3/8"	H6837	2
	Lock Washer, #6	H1550	2
	Flat Washer, #6	H1564	2
6	Nut, 10-32	H9042	1
7	Striker Bracket Only	20939000	1
8	Magnet Catch	08974200	2
9	Circuit Breaker	40121705	1
10	Switch	20355401	1
11	Wire Guide	19112301	1
12	Cover	20471902	1
	Screw, 6-32 x 1/4"	H6836	2
	Lock Washer, #6	H1550	2
	Flat Washer, #6	H1564	2
13	Switch Box	20471602	1
	Nut, 8-32	H9041	2
	Grommet	09204700	2
14	Cable to Magazine	20967900	1
15	Cable to Dryer Relay Box	20489501	1
16	Dryer Restraint Cable	20313604	2
	Flat Washer, #10	H1563	2
	Nut, 10-32	H9042	2
17	Stacker Guide	19112201	1
	Screw, 6-32 x 3/8"	H6837	2
	Lock Washer #6	H1550	2
	Flat Washer, #6	H1564	2
18	Rear Panel Only	20938700	1
	Pocket Pull	20881200	1
	Flat Washer, #10	H1560	10
	Lock Washer, #10	H1552	10
	Nut 10-32	H9042	10
19	Grommet	09204701	1
20	Rear Door Angle	20961100	1

DRYER ASSEMBLY COMPLETE - 20938900 - 110V  
20938901 - 220V



DRYER ASSEMBLY COMPLETE - 20938900 - 110V  
20938901 - 220V

Ref.	Description	Part No.	Qty.	Ref.	Description	Part No.	Qty.
1	Dryer Bottom & Shell	20466601	1	19	Vibration Isolator	19803201	8
2	Temperature Control	19634901	1	20	Washer	19348601	4
	Screw, 6 x 1/4	H6871	2		Washer	09888600	4
3	Wire Tie	E0230700	A/R		Screw, 10-32 x 1-1/4	H4730	4
4	Heater Assembly, 110V	19530201	A/R	21	Sprocket 15T	09744505	1
	Heater Assembly, 220V	19765501	A/R		Set Screw, 10-32	H6928	1
	Screw	H6871	1	22	Bearing	09787800	2
5	Baffle Weldment	20465801	1	23	Cover	20461701	1
	Screw, 8-32 x 3/8"	H6843	2	24	Handle	19531401	1
	Washer, #8	H1563	2		Heat Shield	19653201	1
	Lock Washer, #8	H1551	2		Screw, 10-32 x 3/8"	H6851	2
6	Inlet Seal	20487701	1		Lock Washer, #10	H1552	2
7	Blower, 110V	19547401	A/R		Flat Washer, #10	H1560	2
	Blower, 220V (McClean)	20966500	A/R	25	Guide	20457501	2
	Blower, 220V (EBM)	20730801	A/R		Nut, 8-32	H1405	4
	Hex Head Screw, 8-32 x 3/8"	H6843	4		Lock Washer, #8	H1551	4
	Washer, #8	H1563	4		Flat Washer, #8	H1563	4
	Lock Washer, #8	H1551	4	26	Pulley & Shaft Assembly	20458101	1
8	Cable Restraint	20313604	2		Shaft Only	20457901	
	Screw, 10-32 x 1/2"	H4652	2	27	Pulley & Shaft Assembly	20939800	1
9	Motor, 110V	206879	A/R		Shaft Only	20972500	
	Motor, 220V	20687901	A/R	28	Pulley & Shaft Assembly	20458001	1
	Screw, 8-32 x 3/8"	H6843	4		Shaft Only	20457901	
	Lock Washer, #8	H1551	4	29	Pulley & Shaft Assembly	20461501	1
	Flat Washer, #8	H1563	4		Shaft Only	20457901	
	Adapter Bracket	20938200	1	30	Gear	19860201	2
	Screw, 10-32 x 3/8	H6851	4		Pin, 3/32 x 5/8	H5075	2
	Washer, #10	H1560	4	31	Belt (O-Ring)	19511301	18
	Lock Washer, #10	H1552	4	32	Pulley	19511401	36
10	Support Arm Weld. (shown)	20938300	1		Tolerance Ring	40149216	36
	Support Arm Weld. (N/S)	20938500	1	33	Retaining Ring	H9278	1
11	Sprocket, 30T	40150810	1	34	Relay Box Complete, 110V	20471801	A/R
	Roll Pin, 3/32 x 1/4	H2328	1		Relay Box Complete, 220V	20471802	A/R
12	Chain, 1/4 pitch	40144692	1	35	Relay Box	20471701	1
	Connecting Link, 1/4 pitch	07294000	1	36	Relay, 110V	20444301	A/R
13	Wire Harness	20490001	1		Relay, 220V	20444302	A/R
14	Blower Bracket Assy (McClean)	20384101	A/R		Nut, 8-32	H9041	1
	Blower Bracket Assy (EBM)	207304	A/R	37	Rectifier, 100V	40127503	A/R
	Screw, 10-32 x 1/2"	H6852	4		Rectifier, 220V	40127509	A/R
	Washer, #10	H1560	4	38	Cable (striker & switch assy)	20489501	1
	Lock Washer, #10	H1552	4	39	Harness, Relay Box	20491801	1
15	Shock Mount	09773100	4		Screw, 8-32 x 5/8	H5860	4
	Screw, 8-32 x 3/8"	H6843	4	40	Bracket Assembly (McClean)	20900600	A/R
	Washer, #8	H1563	4		Bracket Assembly (EBM)	19652501	A/R
	Lock Washer, #8	H1552	4		Screw, 8-32 x 5/8	H5860	4
16	Seal	19530401	1		Washer, #8	H1563	4
17	Limit Control	19635001	1		Lock Washer, #8	H1551	4
	Screw, 6-32 x 5/16	H4702	2	41	Bearing Plate	19645701	2
	Washer, #6	H1564	2		Screw	H6843	2
18	Dryer Bracket	20938400	2		Washer, #8	H1563	2
					Lock Washer, #8	H1551	2
				42	Screw, 10-32 x 1-1/4"	H6855	4
					Lock Washer, #10	H1552	4



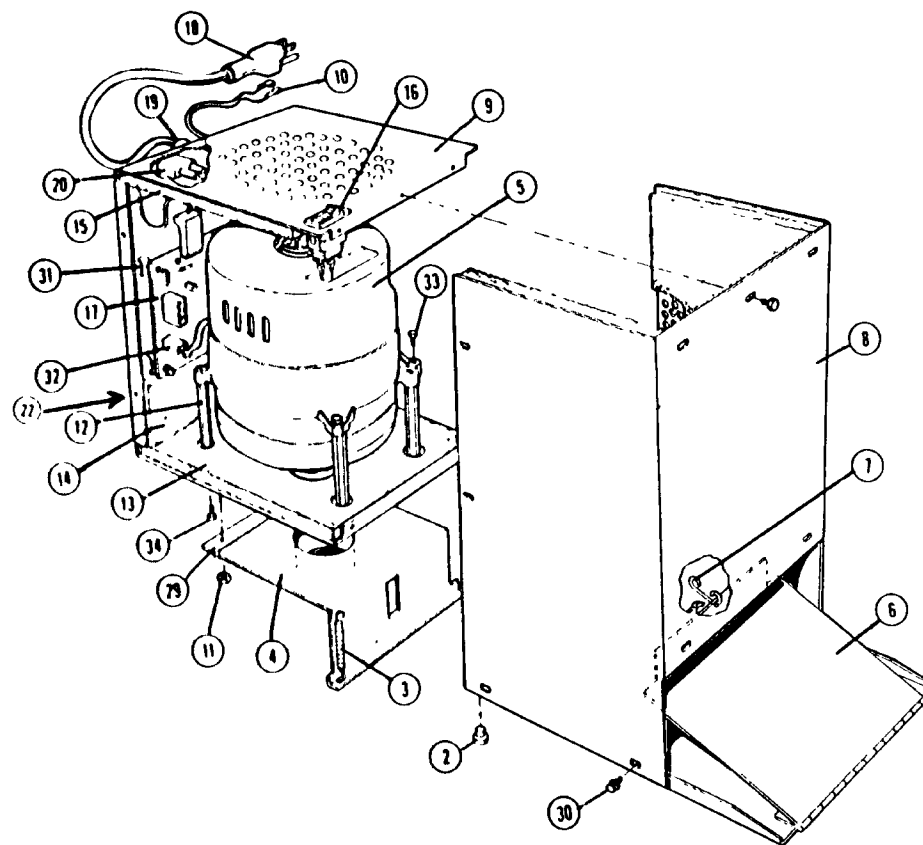
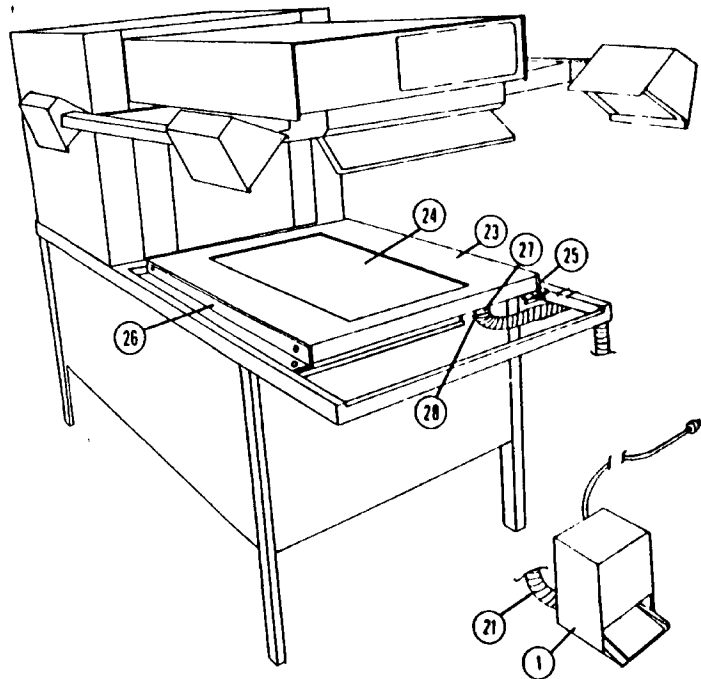
110 VOLT POWER PACK KIT P/N 20922700

Ref.	Description	Part No.	Qty.
----	-----	-----	----
1	Power Cord Assembly	05852113	1
	Clamp	40143809	1
2	Circuit Breaker, 110 volt	19598204	1
3	Transformer	20931100	1
	Nut, 10-32	H9042	4
4	Terminal Strap	20902700	4
	Nut, 10-32	H9042	8
5	Strain Relief Plate	20925000	1
6	Connector	E0098500	1
7	Harness	20933200	1
	Strap	E0230800	6
8	Cover, Circuit Breaker	21038500	1
NS	110V Data Plate Overlay	20947800	1

**VACUUM COPYBOARD ASSEMBLY**

21009701 - 120 volt

21009700 - 220 volt





## 617E/S VACUUM COPYBOARD ASSEMBLY

21009700 - 230V (PC 59704)

21009701 - 120V (PC 59702)

Ref.	Description	Part No.	Qty.
1	Blower Assy. Complete, 120V	206480	1
	Blower Assy. Complete, 220V	20648001	1
2	Bumper	19837301	2
3	Extension Spring	20335401	2
4	Valve Assembly	20328601	1
5	Blower - Brushless, 120V	20546201	1
	Blower - Brushless, 220V	20546201	1
6	Treadle and Base Weldment	20386401	1
7	Link	20327101	1
8	Cover Assembly	206479	1
9	Housing Weldment, 120V	206481	1
	Blower Box Shell, 220V	21068500	1
	Blower Box Base, 220V	21068600	1
10	Vac D.C. Harness Assembly	206487	1
	Vac D.C. Harness Assembly	21069700	1
	Strain Relief	08740200	1
11	Hex Nut, #6-32	H9040	3
12	Standoff	40150226	4
13	Foam, 120V	206476	1
	Foam, 220V	21069200	1
14	Foam, 120V	206485	1
	Foam, 220V	21069300	1
15	Foam, 120V	206486	1
	Foam, 220V	21069100	1
16	DP/DT Switch	19229705	1
	Label	206484	1
17	Vacuum Control PCB Assembly	20883902	1
	Vacuum Control PCB	20883903	1
18	Power Cord Assembly	206491	1
	Power Cord Assembly	21053300	1
19	Bushing	40128312	1
20	Circuit Breaker 10 AMP	40121703	1
21	Air Duct-Flexible	19491903	1
22	Data Plate, 120V	20431719	1
	Data Plate, 220V	21060402	1

Ref.	Description	Part No.	Qty.
23	Mask	20363402	A/R
24	Vacuum Platen Only	20332101	1
	Screw Assembly	20922900	4
	Nut, 5/16-18	H7269	4
	Flat Washer, 5/16	H1560	8
25	Copyboard Support	21022000	2
26	Magnetic Strip	19706404	4
	Screw, 8-32 x 3/8"	H6843	4
	Flat Washer, #8	H1563	4
	Lock Washer, #8	H1551	4
27	Vacuum Box, hose	206182	1
	Screw, 10 x 1/2" self-tap	H2694	1
	Flat Washer, #10	H1569	1
	Screw, 8-32 x 3/8"	H6843	4
	Sealant	H8854	A/R
28	Hose Clamp	08327601	2
29	Spacer	20328101	1
30	Screw, 8-32 x 1/4	H6848	13
31	Standoff	20293401	4
32	Vacuum Motor Harness	20562101	1
33	Screw, 8-32 x 1/2	H0769	1
	Nut, 8-32	H1442	1
	Lock Washer, #8	H1551	1
	Plain Washer, #8	H1563	1
	Screw, 8-32 x 3/4	H6845	3
	Screw, 8-32 x 1/2	H6844	2
NS	Vacuum Copyboard Cover	21021300	1
	R.F.I. Line Filter, 220V only	40123953	1
	R.F.I. to PCB Harness, 220V	21069500	1
	Wire Tie 4"	E0230700	4
	Tie Base	20133301	1
	Snap Bushing, 1 1/8"	40142011	1
	Snap Bushing, 1"	40142017	1